



OAKBROOK CENTER

Prestigious & Contemporary Office Space
in a Luxurious, Coastal Palm Beach Gardens Location

For Lease
±1,034-13,391 SF
Class-A Office Space
near the best of Palm Beach Gardens



OAKBROOK CENTER

11760 – 11770 - 11780 US Highway One N.
Palm Beach Gardens, FL 33408

Key Highlights

- Class-A office complex with amazing water views of the Intracoastal, ocean, and surrounding luxury communities
- Flexible terms and generous improvement allowances available
- Monument signage available
- Minutes to I-95 and Palm Beach Garden's residential communities and conveniences



Move-in ready & full floor suites available



Exclusive on-site fitness center, with Peloton Bikes



Stunning views



Covered parking

FOR MORE INFORMATION:

Lesley Sheinberg, Managing Director
561 254 7810 | lsheinberg@mhcreal.com

Jason L. Sundook, SIOR, Principal
561 762 3131 | jsundook@mhcreal.com

FOR LEASE: OAKBROOK CENTER, PALM BEACH GARDENS

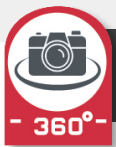
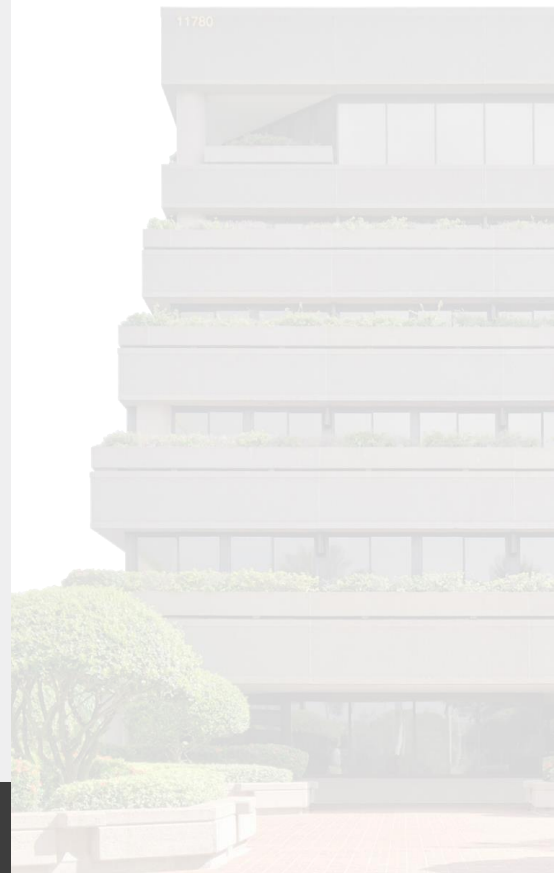
Prestigious Office Space. Thoughtfully Designed.



FIRST-CLASS AMENITIES & CONVENIENCE

Improve your work-life balance with enriching and thoughtful amenities

- One-of-a-kind architecture with stacked private terraces
- Complimentary fitness center with cardio, weight equipment and Peloton Bikes
- Floor-to-ceiling windows with amazing views
- Lush landscaping
- Contemporary lobbies
- Ample parking (surface, covered, and garage)
- Monument signage
- Prestigious location near the best of Palm Beach Gardens



VIEW 3D TOURS! tinyurl.com/Oakbrook3DTours

For More Information:

Lesley Sheinberg | lsheinberg@mhcreal.com
Jason L. Sundook, SIOR | jsundook@mhcreal.com

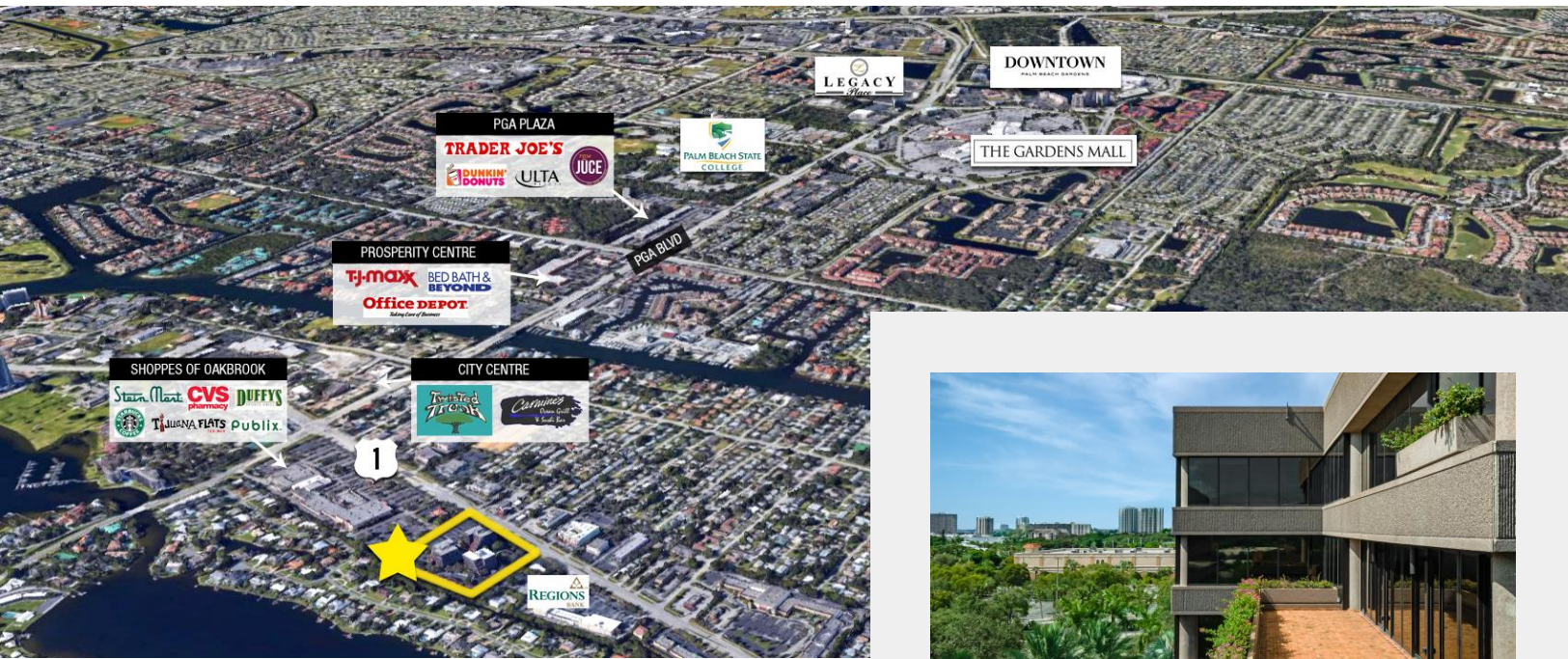
 561 471 8000



www.OakbrookCenter.net
www.mhcreal.com

FOR LEASE: OAKBROOK CENTER, PALM BEACH GARDENS

Luxurious & Coastal Location, Near the Best of Everything



PREMIER PROPERTY & LOCATION

Close to Enticing Palm Beach Gardens Conveniences

Oakbrook Center is one of Palm Beach Garden's most recognized and prestigious corporate addresses. This 243,000 SF Class-A office complex is beautifully located near the ocean with easy access to I-95 and area conveniences.

The complex is close to PGA Boulevard's abundance of high-end and casual restaurants and shops, including The Gardens Mall, Downtown Gardens and Legacy Place.

FOR MORE INFORMATION:

Lesley Sheinberg, Managing Director
561 254 7810 | lsheinberg@mhcreal.com

Jason L. Sundook, SIOR, Principal
561 762 3131 | jsundook@mhcreal.com



561 471 8000



www.OakbrookCenter.net
www.mhcreal.com

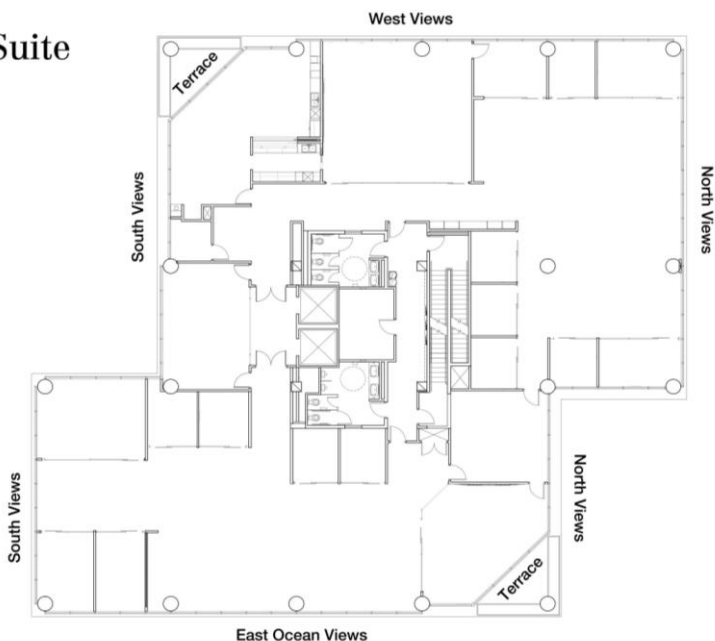
FOR LEASE: OAKBROOK CENTER, PALM BEACH GARDENS
±11,825 SF Modern & Stunning Penthouse Office Suite

Discover a Harmonious Blend of Sophistication & Efficiency

Penthouse Suite



LEARN MORE



Suite N600

11,826 SF

- Entire 6th-floor space with floor-to-ceiling windows, offering abundant natural light and incredible panoramic ocean views
- Class-A finishes and glass panel accents throughout
- Exquisite executive office with a private terrace
- Stunning kitchen and lounge area with private terrace
- Two large conference rooms
- Fantastic mix of spacious open work areas & private offices



READY TO TAKE YOUR BUSINESS TO NEW HEIGHTS?

Experience the power of possibility with this full-floor penthouse office suite - boasting breathtaking views, exquisite design, and unmatched prestige. Unleash your potential in this ideal corporate HQ location.



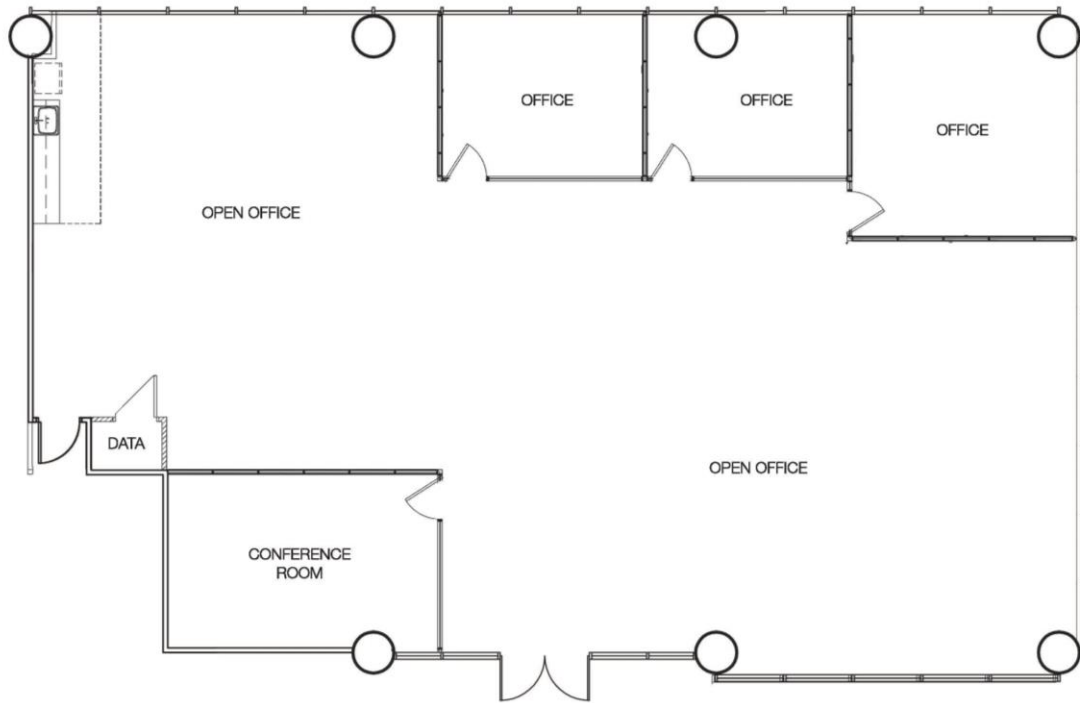
561 471 8000



www.OakbrookCenter.net
www.mhcreal.com

FOR LEASE: OAKBROOK CENTER, PALM BEACH GARDENS

Brand New Spec Suite Now Available!



Suite W102 4,176 SF



- Newly built, ground floor spec suite with direct exterior access
- Panoramic courtyard views with floor-to-ceiling windows
- Abundant natural light
- 3 glass panel offices
- 1 glass panel conference room
- Kitchen area
- Spacious open workspace
- Furniture is available



FOR MORE INFORMATION:

Lesley Sheinberg, Managing Director
561 254 7810 | lsheinberg@mhcreal.com

Jason L. Sundook, SIOR, Principal
561 762 3131 | jsundook@mhcreal.com



561 471 8000



www.OakbrookCenter.net
www.mhcreal.com