

# ± .75 Acre CPUD Development Site

SE Central Pkwy, Stuart, FL 34994

# NAI Southcoast



Presented by

Reid Armor

Sales Associate  
772.631.4248

reid@naisouthcoast.com  
www.naisouthcoast.com

Boyd G. Bradfield, CCIM, SIOR

Founder  
772 215 2538

boyd@naisouthcoast.com  
www.naisouthcoast.com

FOR SALE:

# \$750,000



# ± .75 Acre CPUD Development Site

SE Central Pkwy, Stuart, FL 34994

## Property Details

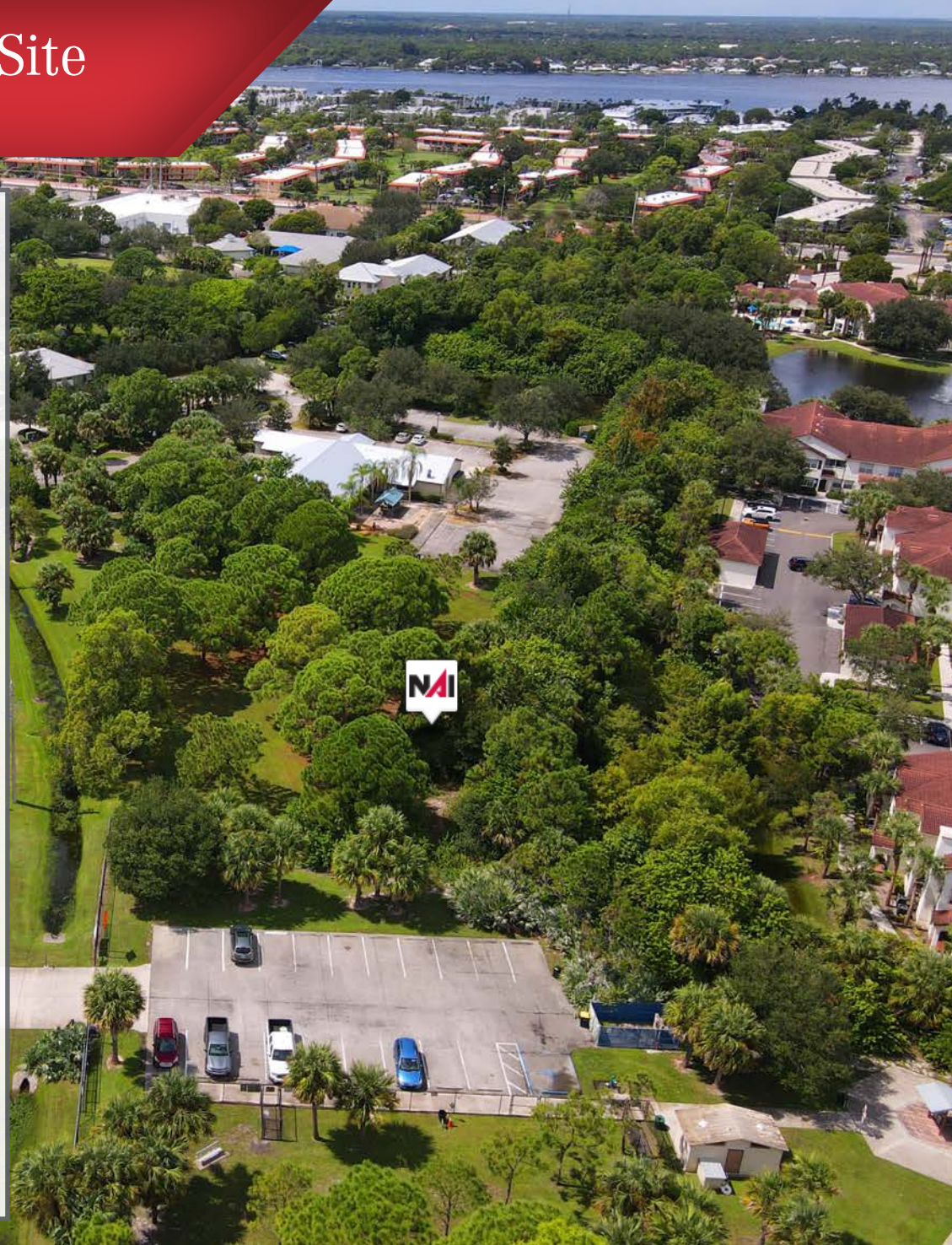
Address:	SE Central Pkwy, Stuart, FL 34994
Pricing:	\$750,000
Land Size:	.75 - 1 Acre
Zoning:	CPUD
Future Land Use:	Commercial
Parcel ID:	09-38-41-026-000-00010-0

## Property Summary

Rare opportunity to acquire a small commercial parcel located within the city of Stuart! Located right off of Kanner highway, a flexible CPUD Zoning allows for a variety of uses so this site provides a great opportunity to develop your dream office, medical building, or retail store.

Once a property line is agreed upon between Buyer and Seller and a survey is completed, the land will be subdivided via simple application and approval through the City of Stuart.

Just 5 minutes away from the amenities of Downtown Stuart as well as Palm City. This site also provides you easy access to the highly regarded schools of Martin County and nearby hospitals of the Cleveland Clinic. Furthermore, Kanner Highway places this project on a main artery to I-95 and Florida's Turnpike.





# ± .75 Acre CPUD Development Site

SE Central Pkwy, Stuart, FL 34994





# ± .75 Acre CPUD Development Site

SE Central Pkwy, Stuart, FL 34994

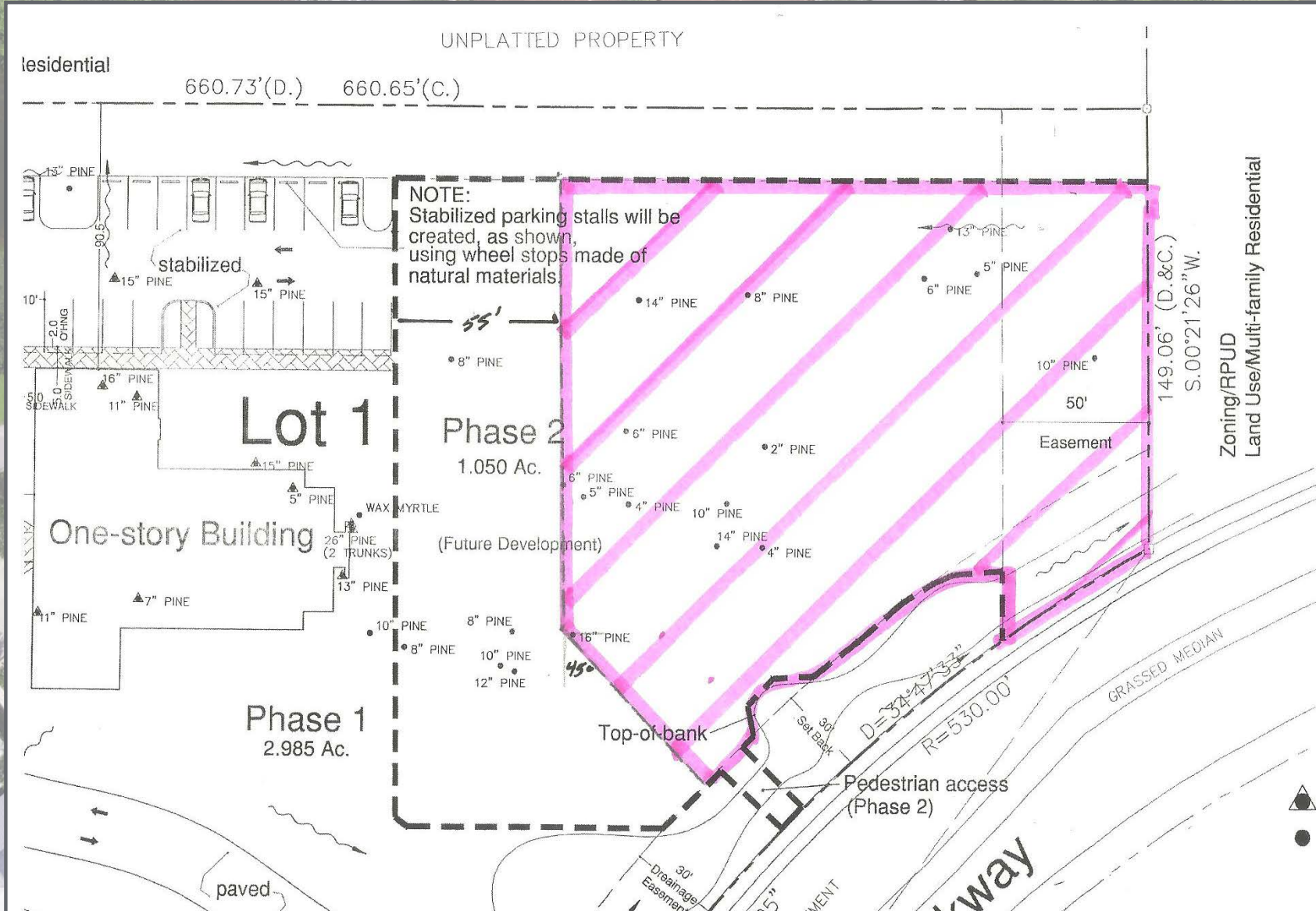




# ± .75 Acre CPUD Development Site

SE Central Pkwy, Stuart, FL 34994

## Survey Sketch



# Regional Overview

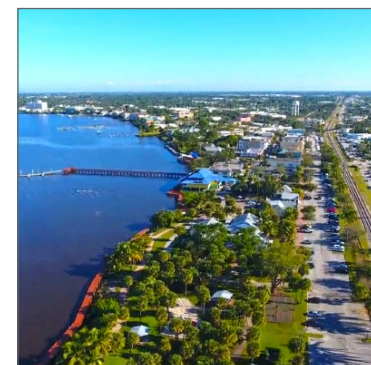
Martin County, Florida

The cities that make up Martin County are Jensen Beach/Rio, Stuart/Sewall's Point, Hutchinson Island, Hobe Sound, Jupiter/ Tequesta, Palm City, Port Salerno and Indiantown. Martin County is a wonderful place to visit and live, with beaches, golf, fishing and boating. The County boasts arts amenities, quaint downtowns with shops, gourmet dining and galleries, museums, historic places, festivals and more.

## *Martin County is for...*

The golf enthusiast... Martin County is home to over 35 world-class golf courses all within a 15-mile radius. The sun worshiper... The County offers its visitors and residents alike some of the finest beaches on the east coast. The discriminating arts shopper... More than 20 galleries participate in a monthly First Thursday gallery night. Many of these galleries are in the historic downtowns of Stuart, Jensen Beach, Port Salerno and Hobe Sound. The music lover... The historic Lyric Theatre offers a wide-array of fist class talent nearly 300 days a year... This acoustically amazing theatre features concerts for all music lovers, from classical to rock and roll, and theatrical performances by local and national talent.

Mark your calendars for a plethora of events to look forward to in Martin County, Florida. The Stuart Air Show, Stuart Boat Show, ArtsFest, and the Martin County Fair are some of the many events taking place throughout the year. The Treasure Coast Children's Museum is a great place for the kids located at Indian Riverside Park which has a fabulous water play area, fishing, and a riverfront view. Often, there are also events in the park including concerts, orchid shows, and more. Indian Riverside Park also features the Maritime and Yachting Museum. Hutchinson Island houses the Elliott Museum which focuses on art, history and technology. Named after prolific inventor Sterling Elliott, the museum houses permanent exhibits including Model A Trucks, early transportation, history of Stuart and surrounding regions and baseball memorabilia. For the more scientifically minded and curious kids, the Florida Oceanographic Coastal Center which offers a fun opportunity to learn more about our local ecosystem and even feed a stingray!





# City Overview

Stuart, Florida

Stuart, Florida is located on Florida's East Coast, which borders the St. Lucie River and West of the Indian River. The climate is pleasant with mild winters and warm summers. The annual average temperature is 72 degrees. Annual rainfall averages 70.44 inches.

Stuart is famed for Sail fishing and all other types of sport fishing, you can enjoy Ocean fishing, river and bay fishing, fresh water fishing. The North and South forks of the St. Lucie River are tropical wonderlands for cruises. Stuart has quaint older neighborhoods in the downtown area. There is a mixture of town homes and condominiums. Stuart's successful revitalization program has made the Downtown area a pleasant ambiance, lined with shops and restaurants.

The top major employers are, Cleveland Clinic Hospital, Vought Aircraft, Municipal Government, and thousands of successful small businesses. The economy is driven by retail service, hospitality, construction and government sectors located throughout the city.

At the present time Stuart is a growing community, annexing new properties north and south of the city, currently 6.25 square miles. Revitalization is in progress in the Potsdam section of the downtown area as well as North of the new Roosevelt Bridge. The new Roosevelt Bridge was completed in 1996, and the Department of Transportation recently finished the Evans Cray Bridge, which leads to Stuart's Public Beaches.

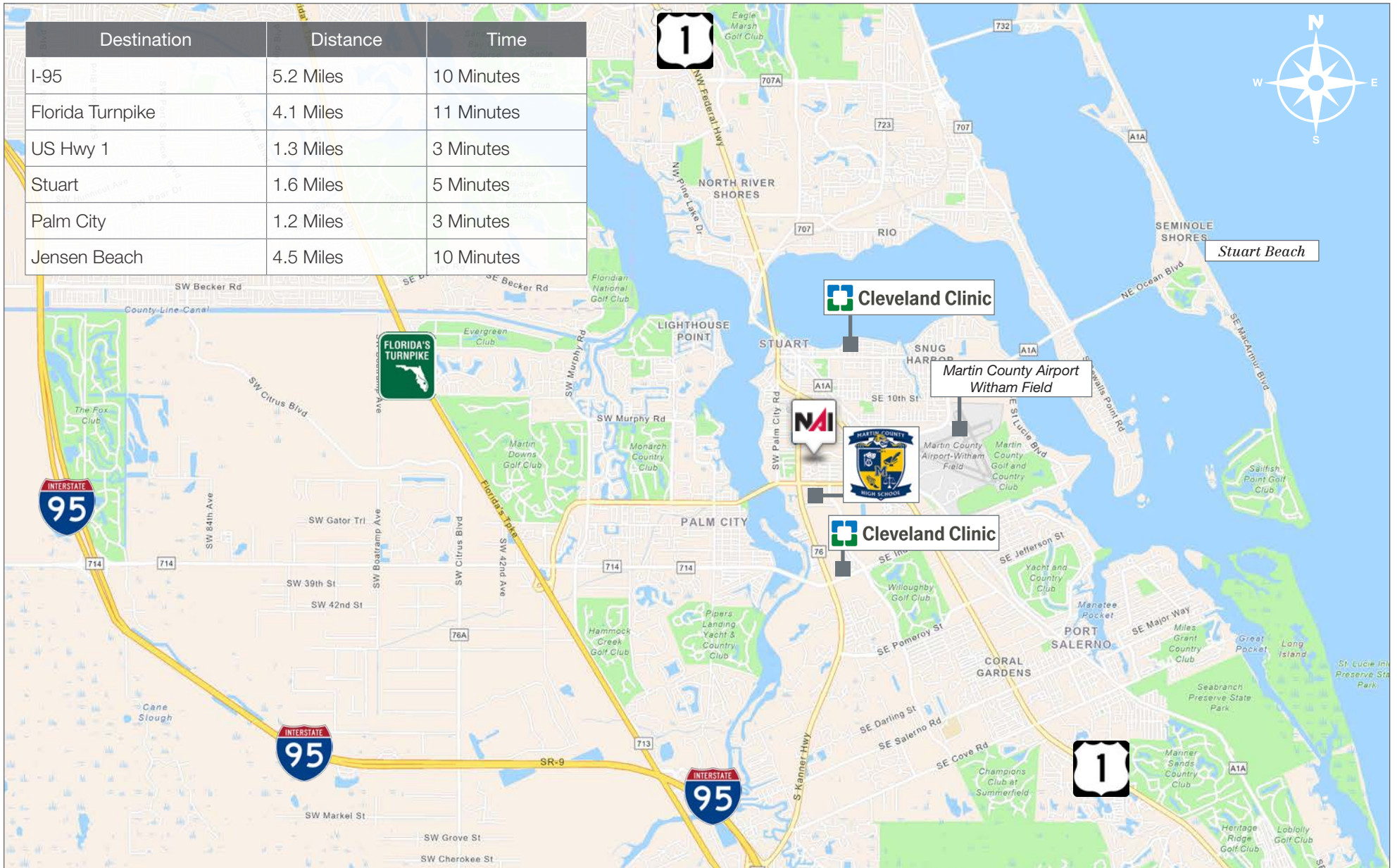


# ± .75 Acre CPUD Development Site

SE Central Pkwy, Stuart, FL 34994

## Drive Time

Destination	Distance	Time
I-95	5.2 Miles	10 Minutes
Florida Turnpike	4.1 Miles	11 Minutes
US Hwy 1	1.3 Miles	3 Minutes
Stuart	1.6 Miles	5 Minutes
Palm City	1.2 Miles	3 Minutes
Jensen Beach	4.5 Miles	10 Minutes







Reid Armor

Sales Associate

772.631.4248

reid@naisouthcoast.com

www.naisouthcoast.com



Boyd G. Bradfield, CCIM, SIO

Founder

772 215 2538

boyd@naisouthcoast.com

www.naisouthcoast.com

## ± .75 Acre CPUD Development Site

SE Central Pkwy, Stuart, FL 34994



FOR SALE:

**\$750,000**