



800 TRANSFER ROAD

St. Paul, MN 55114

Industrial Warehouse/Office Space For Lease

Highlights and Features:

- Located in the Transfer Road Commerce Center
- Easy access to University Avenue W
- Front desk/reception area
- Large conference room with large projector screen
- Kitchen with oven, fridge, microwave, and sink
- Ceiling Height: 14'
- Dock High Doors: 4
- Ample parking
- Co-tenants: Kidwind Project Inc, Genoa Healthcare, Heritage Crystal Clean, Audioquip Inc, Paradigm Diagnostics, Eco Garden Supply, Crescent Tide, NAMI of Minnesota, Association Office, Kuk Sool Won of St. Paul, Redbull, Mysand Companies, Compatible Technology, The Arc Minnesota, CCLRT System Field Construction Office, Aldridge/Collisys, Lake Superior Electric & Controls, Mental Health Resources, Inc, Meilin Art Studio, CAAM, Chinese Dance Theater

Available For Lease:

- Suite 1B: 8,854 sf
- 2024 CAM/Tax: \$5.00 psf
- Lease Rate: \$10.00 psf to \$12.00 psf Net



CORFAC
INTERNATIONAL

Christianson & Company
COMMERCIAL REAL ESTATE SERVICES

www.SpaceAvailableMN.com

EMILY MASSIE

612.750.6480

emily@christiansonandco.com

LISA CHRISTIANSON

952.393.1212

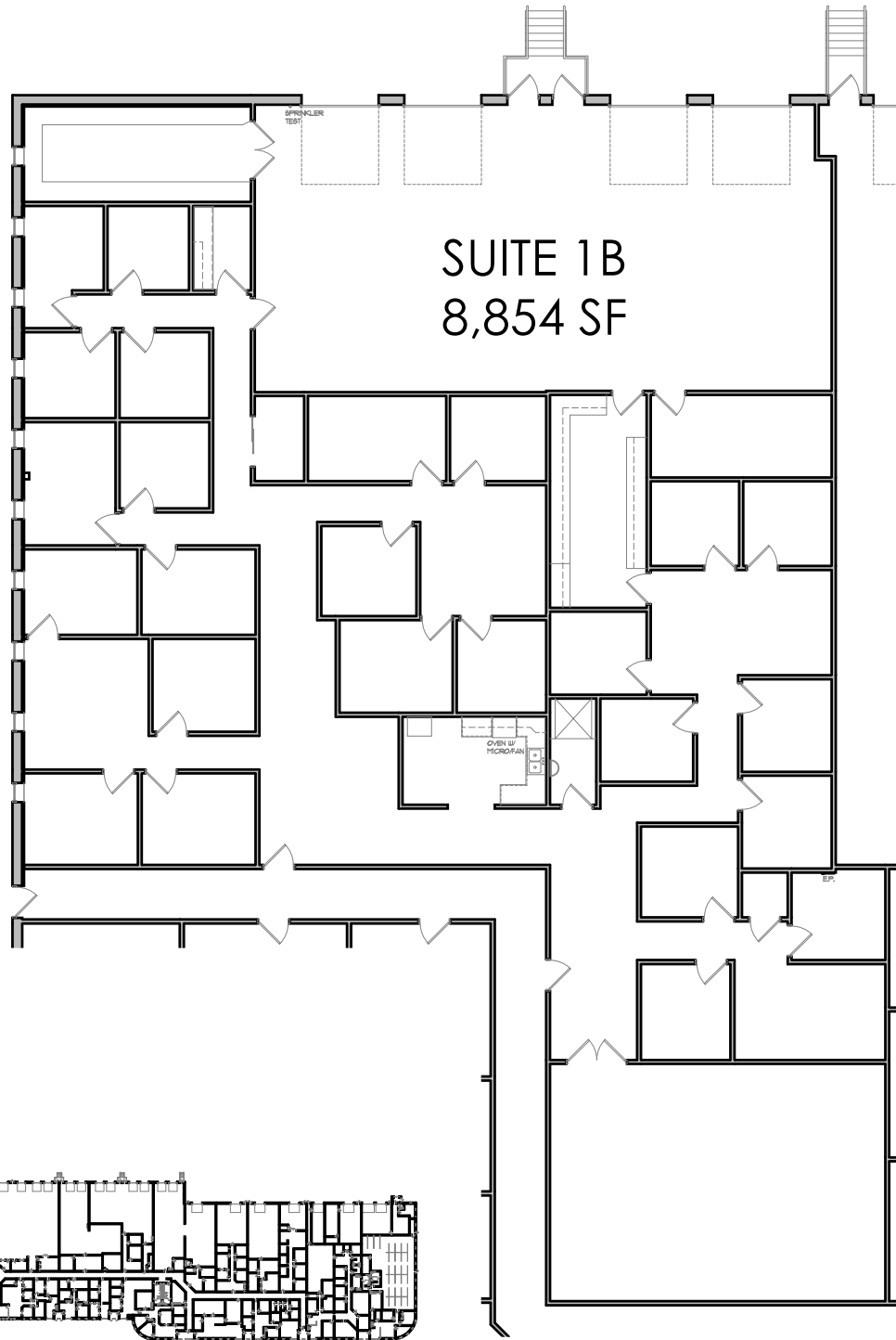
lisa@christiansonandco.com

This information is accurate as of the date of printing and is subject to change without notice. All information is deemed accurate, but cannot be guaranteed.

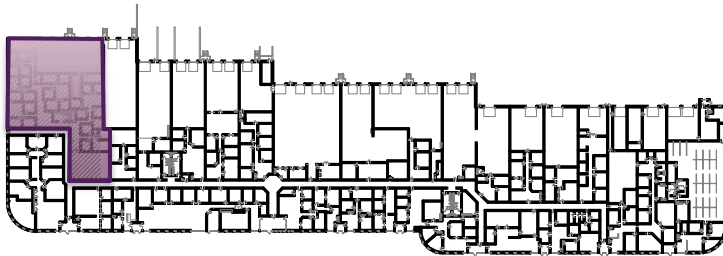
www.SpaceAvailableMN.com

info@SpaceAvailableMN.com | 952.921.5844

Space Plan



Building Key:

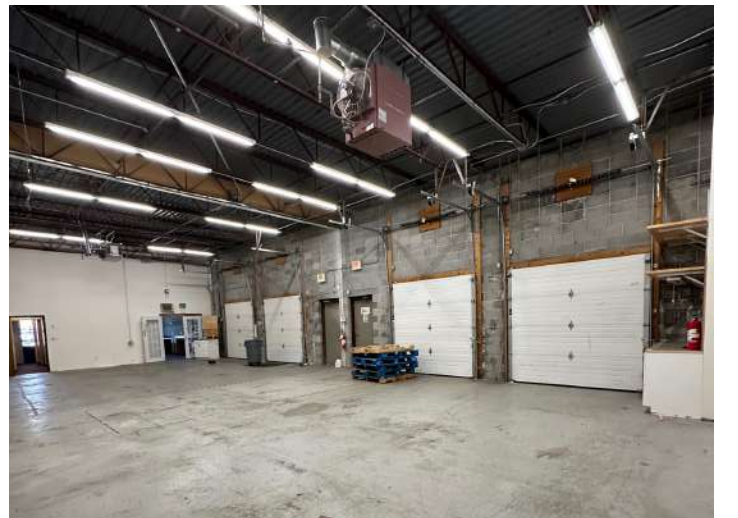
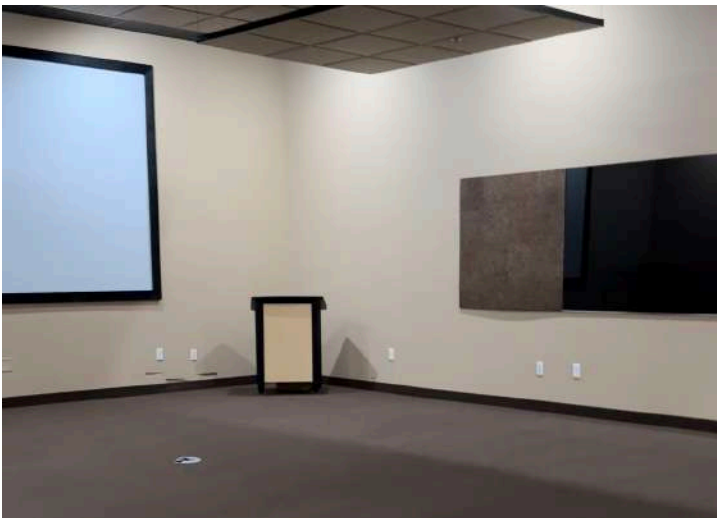
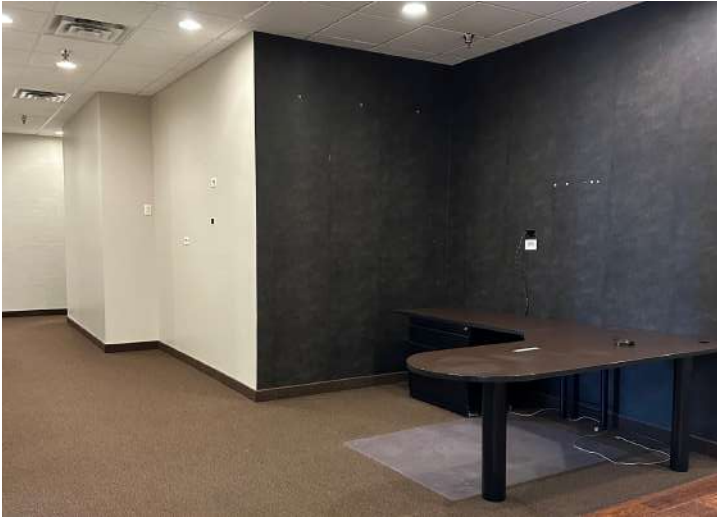


4350 Baker Road, Suite 400
Minnetonka, MN 55343
952.897.7874 Fax: 952.897.7740

Suite 1-B

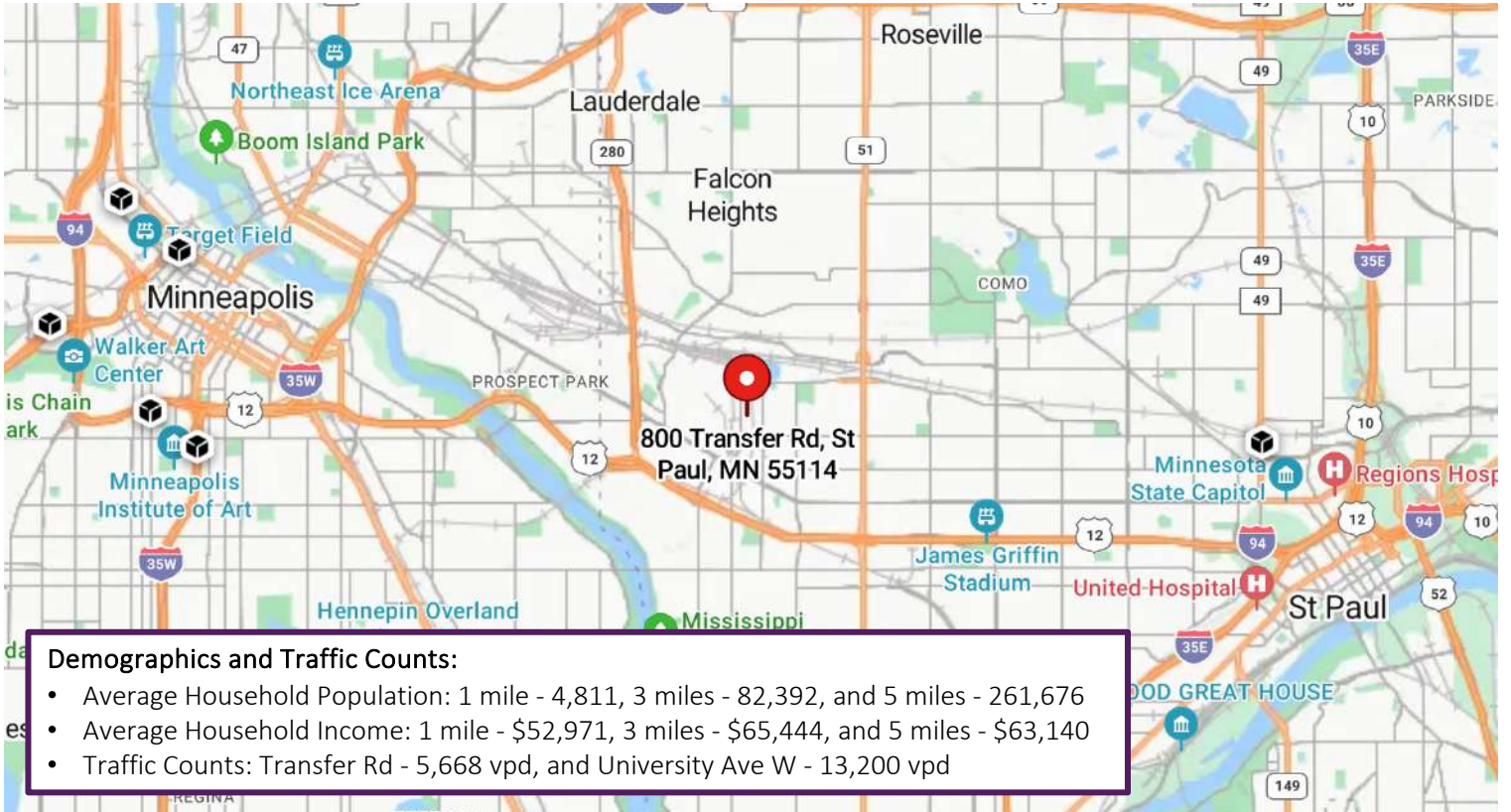
**800 Transfer Road
St Paul, MN 55114-1406**

Interior Photos

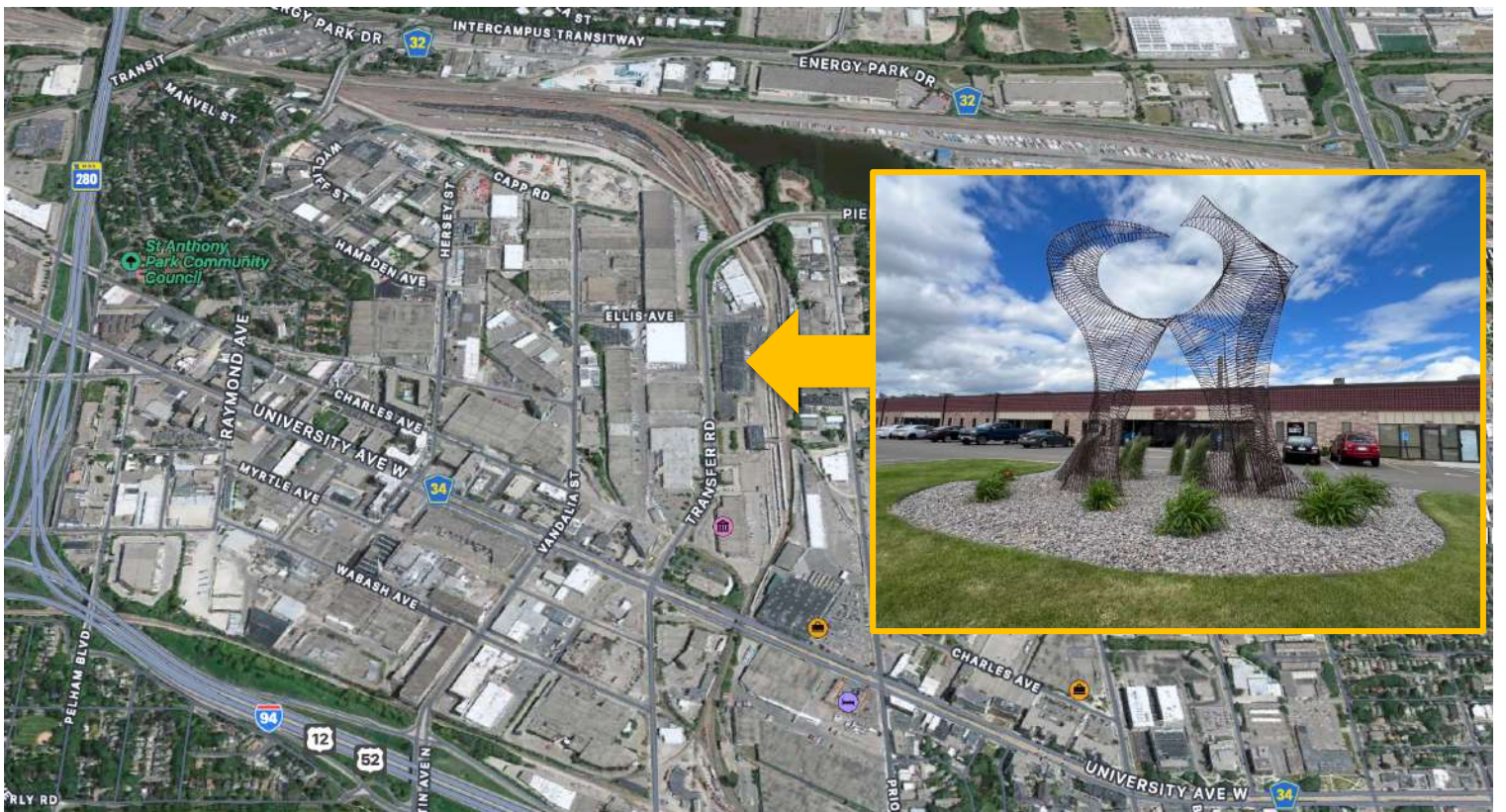


This information is accurate as of the date of printing and is subject to change without notice. All information is deemed accurate, but cannot be guaranteed.

Map



Aerial



This information is accurate as of the date of printing and is subject to change without notice. All information is deemed accurate, but cannot be guaranteed.