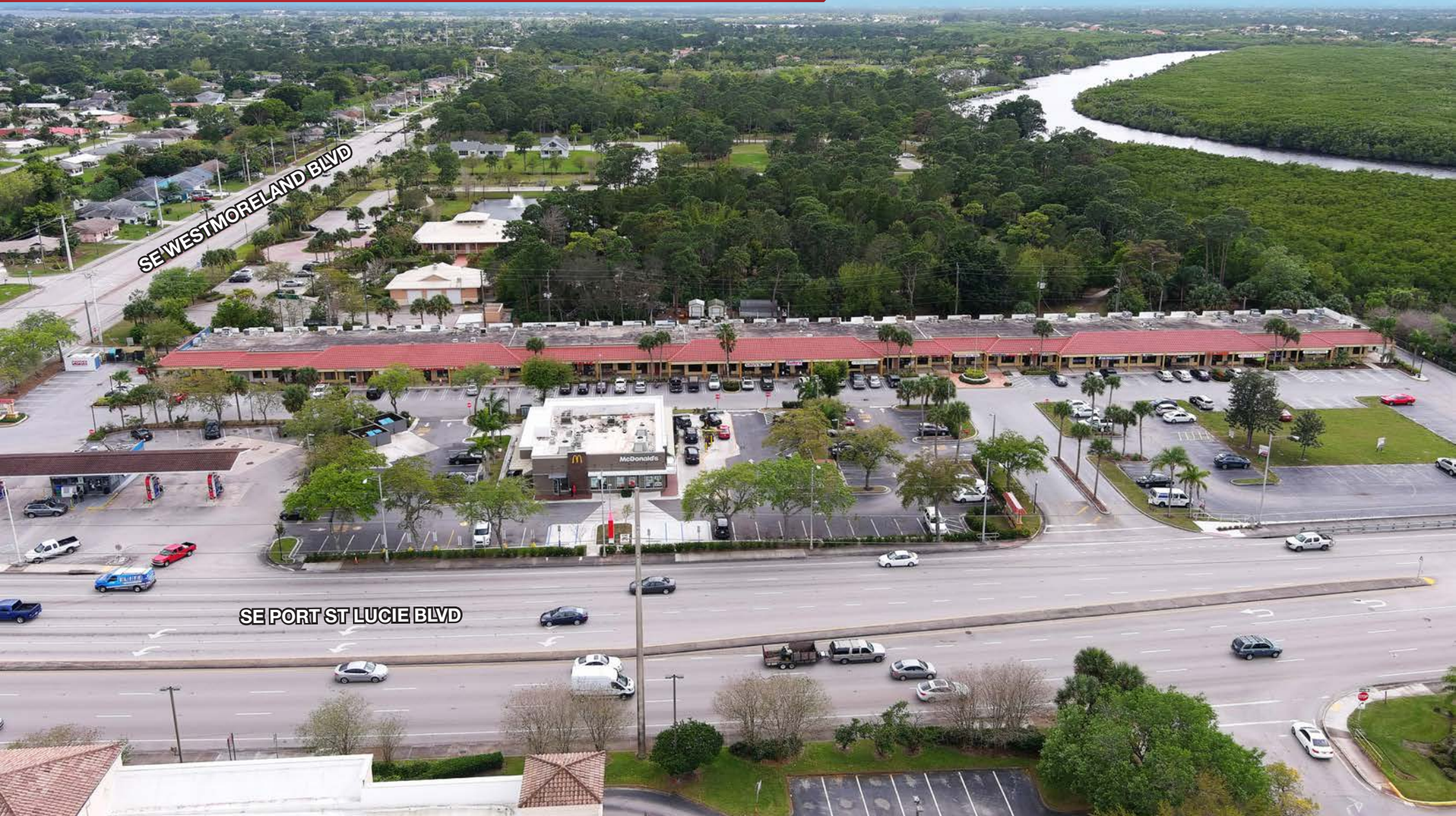


Bridge Plaza For Lease

1000-1080 Port St. Lucie Blvd., Port St. Lucie, FL 34952

NAISouthcoast



SE WESTMORELAND BLVD

SE PORT ST LUCIE BLVD

Presented by

Boyd G. Bradfield, CCIM, SIOR

Founder
772 286 6292 direct
boyd@naisouthcoast.com
www.naisouthcoast.com

JJ Sanguily

Sales Associate
+1 772 286-6292 c +1 772 834 3519
jj@naisouthcoast.com
www.naisouthcoast.com

FOR LEASE:

\$14.00/SF NET

Bridge Plaza For Lease

1000-1080 Port St. Lucie Blvd., Port St. Lucie, FL 34952

Property Overview

Great location and visibility from Port St. Lucie Blvd. Located on one of the busiest intersections in the City of Port St. Lucie. High occupancy, high traffic, great value center perfect for any retail use.

Property Details

- Location:** On the corner of Port St. Lucie Blvd. & Westmoreland Blvd.
- Traffic Count:** ±49,900 AADT
- Outparcel:** 2,800 SF building can be put on the outparcel site for \$70,000 (\$25.00/SF) Annual Net Base Rent plus applicable sales tax (payable monthly). Build to suit rental rate to be determined.
- Lease Rate:** \$14.00/RSF Plus \$7.37/RSF CAM/INS/TAX
- Available Units:** Suite 1010-1012 - 2,400 SF
Suite 1024 - 1,000 SF

Property Highlights

- Located at a signalized intersection
- Two entrances off Port St. Lucie Boulevard



Bridge Plaza For Lease

1000-1080 Port St. Lucie Blvd., Port St. Lucie, FL 34952



Bridge Plaza For Lease

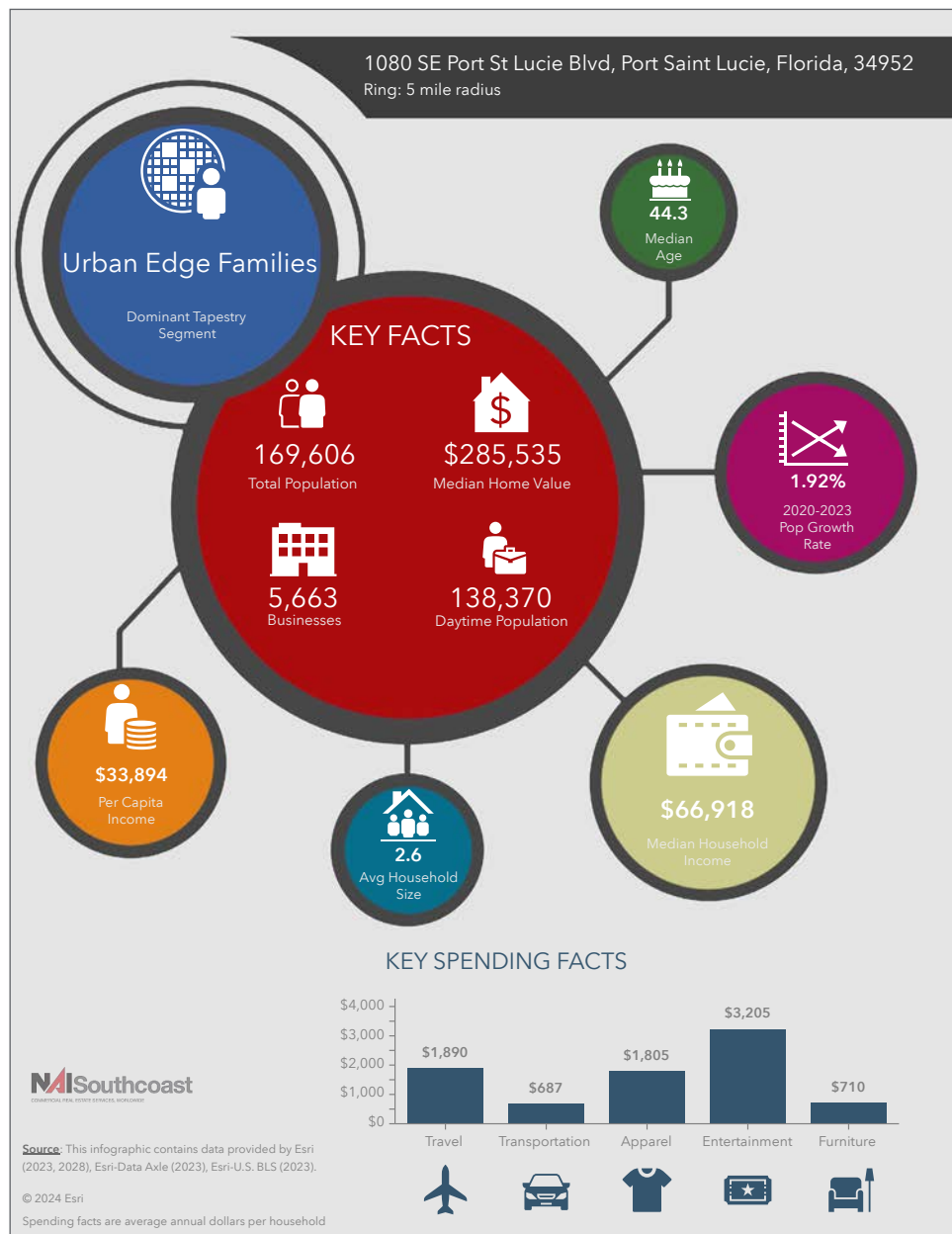
1000-1080 Port St. Lucie Blvd., Port St. Lucie, FL 34952



Bridge Plaza For Lease

1000-1080 Port St. Lucie Blvd., Port St. Lucie, FL 34952

2023 Demographics



Population

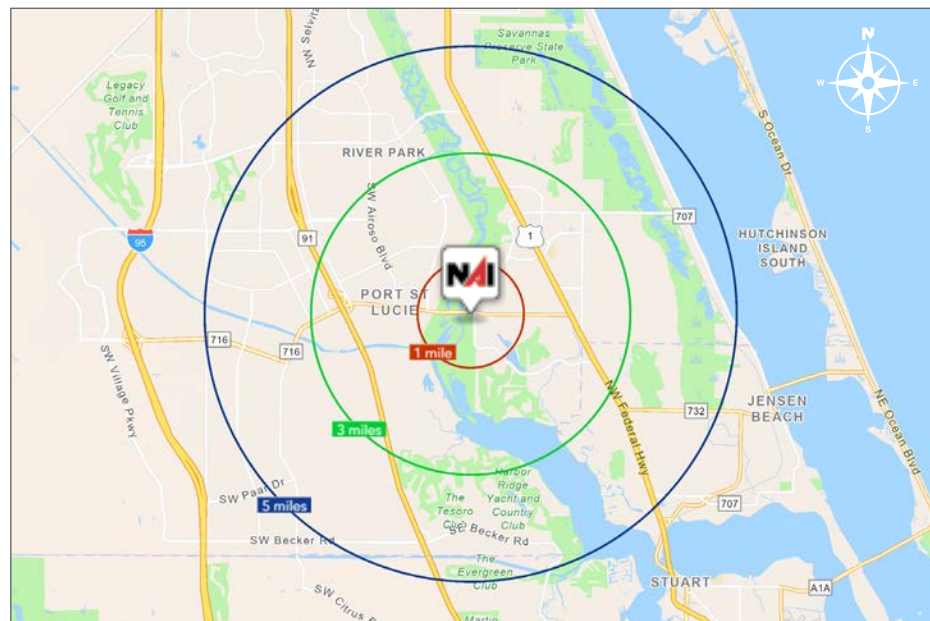
- 1 Mile: 6,718
- 3 Mile: 65,957
- 5 Mile: 169,606

Average Household Income

- 1 Mile: \$83,111
- 3 Mile: \$85,972
- 5 Mile: \$89,426

Median Age

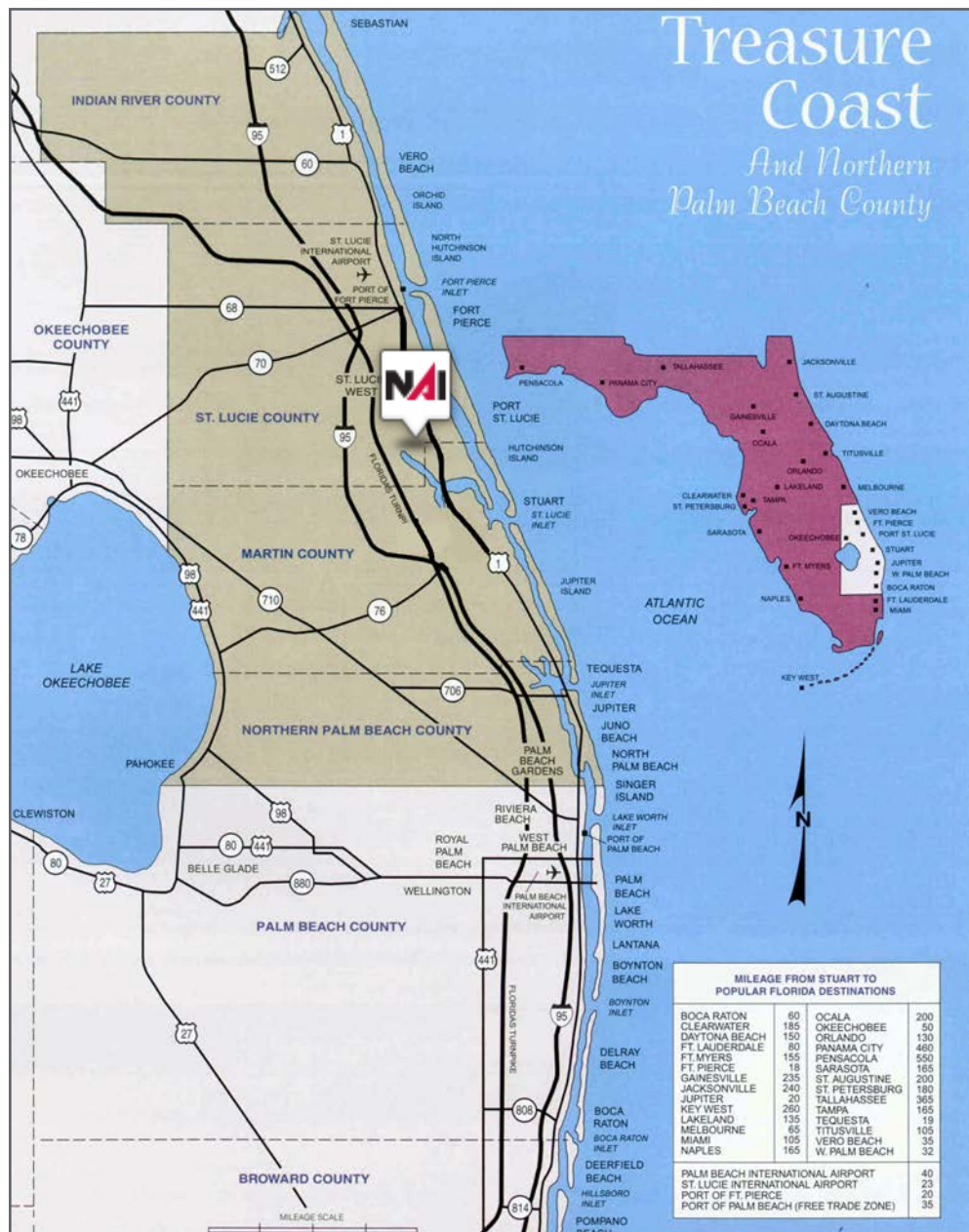
- 1 Mile: 48.0
- 3 Mile: 46.5
- 5 Mile: 44.3



Bridge Plaza For Lease

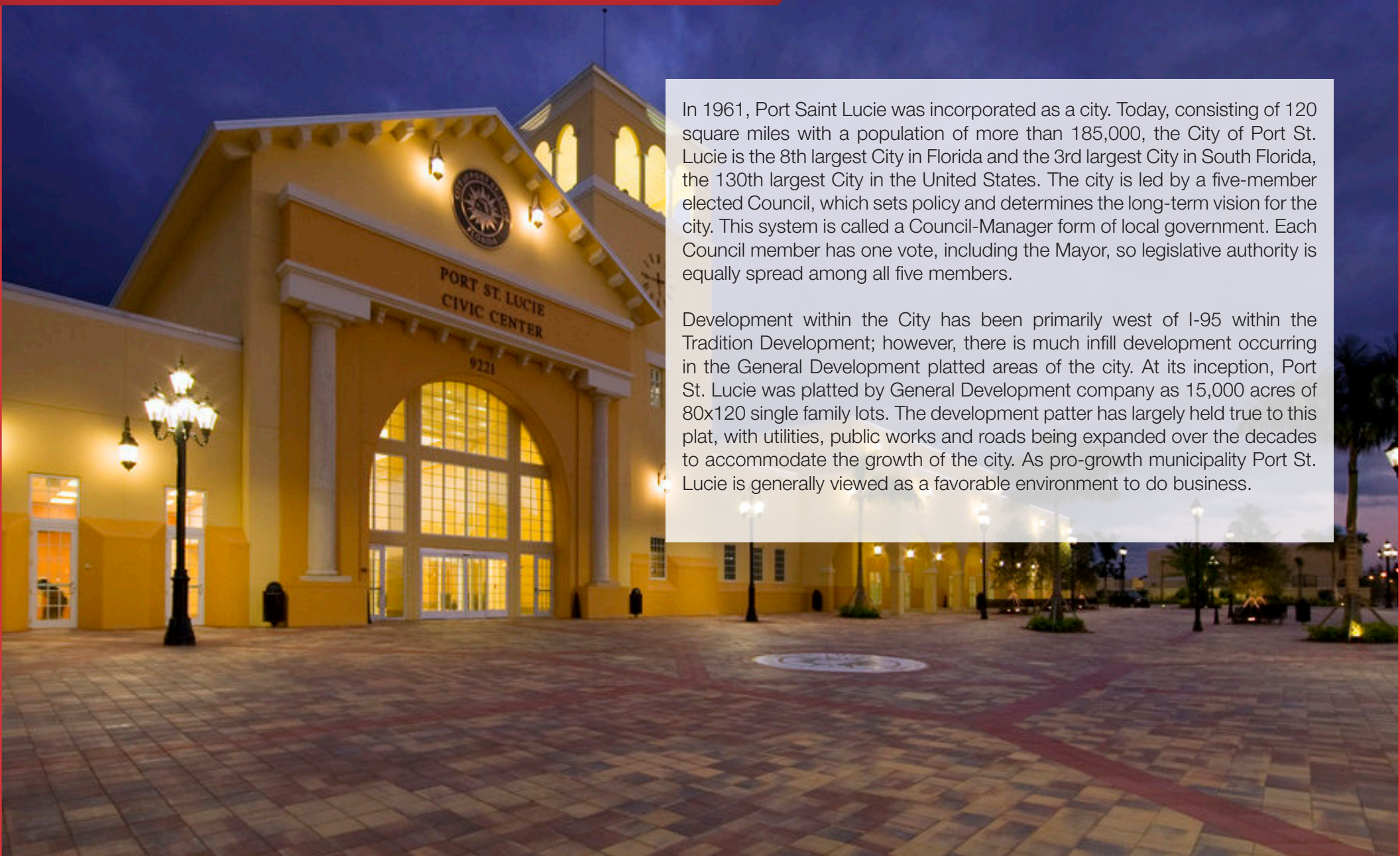
1000-1080 Port St. Lucie Blvd., Port St. Lucie, FL 34952

Area Maps



City Overview

City of Port St. Lucie, Florida



In 1961, Port Saint Lucie was incorporated as a city. Today, consisting of 120 square miles with a population of more than 185,000, the City of Port St. Lucie is the 8th largest City in Florida and the 3rd largest City in South Florida, the 130th largest City in the United States. The city is led by a five-member elected Council, which sets policy and determines the long-term vision for the city. This system is called a Council-Manager form of local government. Each Council member has one vote, including the Mayor, so legislative authority is equally spread among all five members.

Development within the City has been primarily west of I-95 within the Tradition Development; however, there is much infill development occurring in the General Development platted areas of the city. At its inception, Port St. Lucie was platted by General Development company as 15,000 acres of 80x120 single family lots. The development patten has largely held true to this plat, with utilities, public works and roads being expanded over the decades to accommodate the growth of the city. As pro-growth municipality Port St. Lucie is generally viewed as a favorable environment to do business.

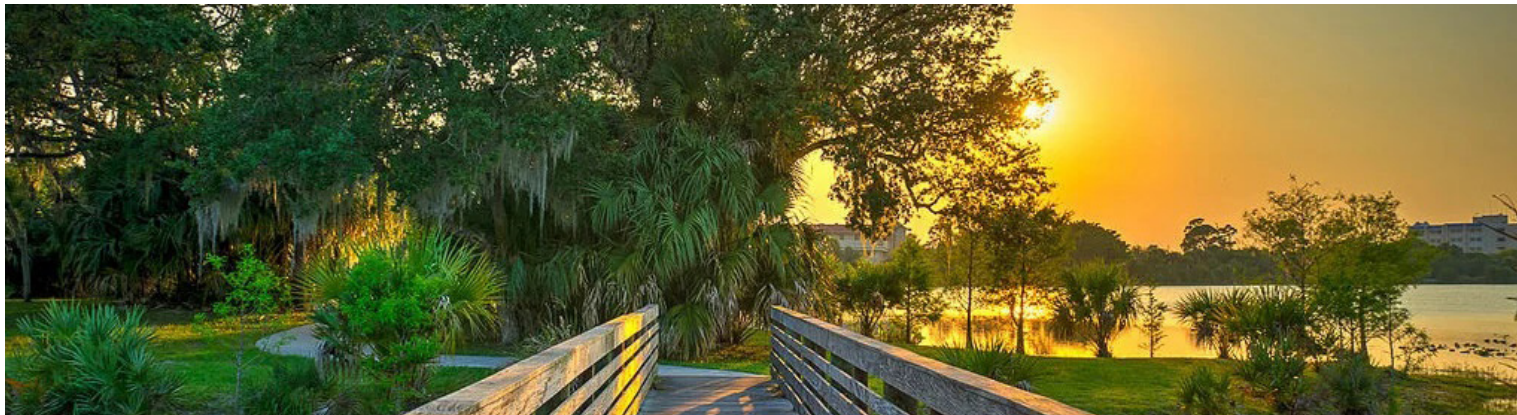
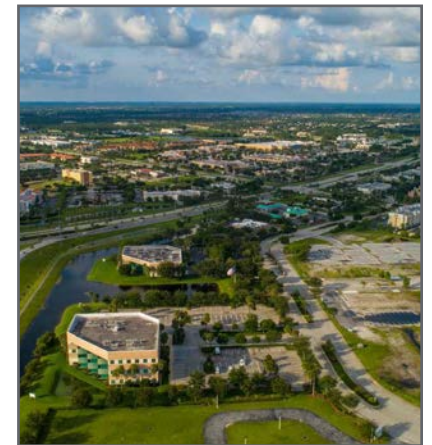
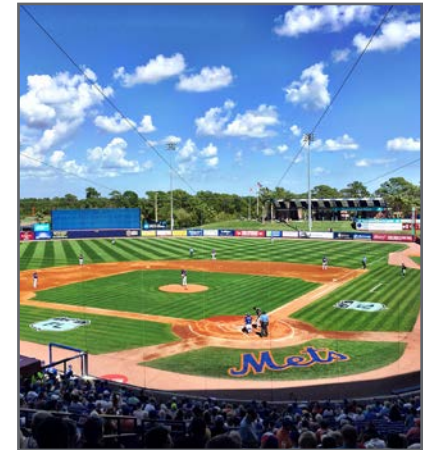
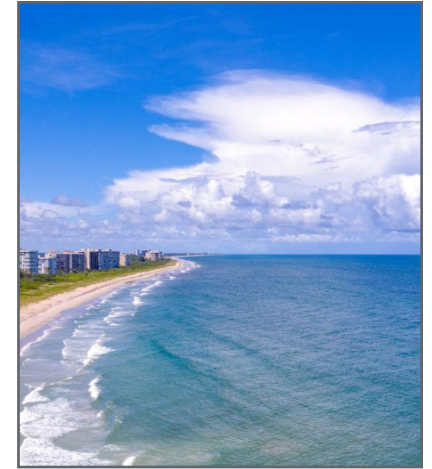
County Overview

St Lucie County, Florida

Extensive, dependable transportation and easy access is the key to growth, and St. Lucie County has both in abundance. Interstate Highway 95 and U.S. Highway 1 provide easy access to the country's east coast, from Key West to Maine. The Florida Turnpike stretches from just south of Miami through northern-central Florida, while State Road 70 runs from U.S Highway 1 in Fort Pierce west to Bradenton, Florida. St. Lucie County offers a plethora of transportation linkages which include rail, a custom-serviced international airport, and a deep-water port – all of which enable easy access to all St. Lucie County has to offer. The St. Lucie County International Airport is also one of the busiest general aviation airports in the state.

The county has a population of over 280,000 and has experienced growth of over 40% since 2000. The area economy is a blend of emerging life science R&D with traditional manufacturing, agriculture, tourism and services. St. Lucie County's natural resources are enviable, with more than 21 miles of pristine coastline and beaches, coral reefs, more than 20,000 acres of public parks and nature preserves, and miles of rivers and waterways.. The area boasts over 20 public and semiprivate courses, with prices ranging from upscale to very affordable, and the great weather allows for play all year round. St. Lucie County is home to First Data Field in Port St. Lucie, the Spring training home of the New York Mets.

The county is host to Indian River State College, an institution that has won national recognition for excellence and innovation applied toward training and education. St. Lucie County boasts 39 schools with a total of 39,000 students and 5,400 staff. The Economic Development Council is a non-profit organization with the goal of creating more, high-paying jobs for residents by working in concert on agreed upon strategies to promote the retention and expansion of existing businesses, as well as attracting new ones to St. Lucie County. Workers employed in St. Lucie County are clustered in the Health Care and Social Assistance (14.8%), and Retail Trade (13.2%) industries. Workers living in St. Lucie County are concentrated in the Health Care and Social Assistance (16.3%), and Retail Trade (14.1%) industries. In 2017 and 2018 the Economic Development Council of St. Lucie County facilitated 20 expansion and job creating projects with a net growth of building area nearing 1,000,0000 square feet.



LISTING AGENTS



Boyd G. Bradfield, CCIM, SIOR

Founder

772 286 6292 direct

boyd@naisouthcoast.com



JJ Sanguily

Sales Associate

+1 772 286-6292 c +1 772 834 3519

jj@naisouthcoast.com

Bridge Plaza For Lease

1000-1080 Port St. Lucie Blvd., Port St. Lucie, FL 34952



FOR LEASE:

\$14.00/SF NET

NAI Southcoast

www.naisouthcoast.com

NO WARRANTY OR REPRESENTATION, EXPRESS OR IMPLIED, IS MADE AS TO THE ACCURACY OF THE INFORMATION CONTAINED HEREIN, AND THE SAME IS SUBMITTED SUBJECT TO ERRORS, OMISSIONS, CHANGE OF PRICE, RENTAL OR OTHER CONDITIONS, PRIOR SALE, LEASE OR FINANCING, OR WITHDRAWAL WITHOUT NOTICE, AND OF ANY SPECIAL LISTING CONDITIONS IMPOSED BY OUR PRINCIPALS NO WARRANTIES OR REPRESENTATIONS ARE MADE AS TO THE CONDITION OF THE PROPERTY OR ANY HAZARDS CONTAINED THEREIN ARE ANY TO BE IMPLIED.