

SOUTH LAKE COMPLEX

1050 US HIGHWAY 27
CLERMONT, FL 34714

Lauren Smith, CCIM, CPM

O: 877.518.5263 x428 | C: 863.873.1970

lauren.smith@svn.com

Ryan Smith

O: 877.518.5263 x476 | C: 407.616.3301

ryansmith@svn.com





PROPERTY INFORMATION

1

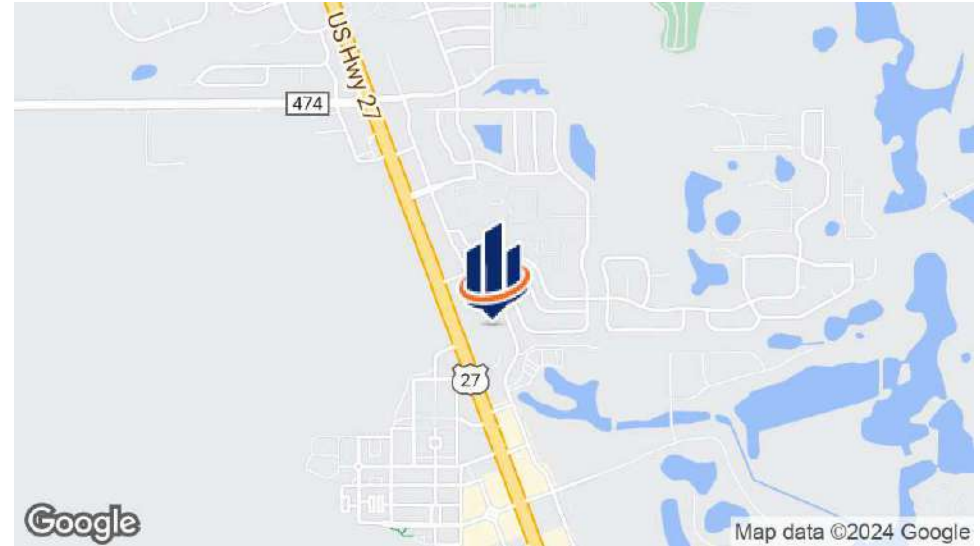
- Property Summary
- Site Plan
- Lease Spaces
- Suite 12-14 Floor Plan
- Suite 12-14 Photos
- Suite 15 Floor Plan
- Suite 15 Photos
- Suite 16 Floor Plan
- Suite 16 Photos
- Full Bleed Photo
- Regional Map
- Location Map
- Demographics Map & Report
- County
- City
- Retailer Map
- Additional Photos



1 PROPERTY INFORMATION

1050 US Highway 27
Clermont, FL 34714

Property Summary



PROPERTY OVERVIEW

Lease Rate **\$22.00 SF/YR (\$5.97/SF NNN)**

- 135 parking spaces
- 42,000 AADT on US Hwy 27
- Within 5 minutes of Disney World and 20 minutes of Orlando

OFFERING SUMMARY

Building Size: 27,199 SF
 Zoning: 3.58 Acres
 APN: 262426000400004500,
 262426000400003300

SPACES

Suite 16
 Suite 15
 Suites 12-14

SF AVAILABLE

1,200 SF
 1,200 SF
 3,600 SF

LEASE RATE

\$22.00 SF/yr
 \$22.00 SF/yr
 \$22.00 SF/yr

MATTERPORT

[View Here](#)
 -
[View Here](#)

Site Plan



Lease Spaces



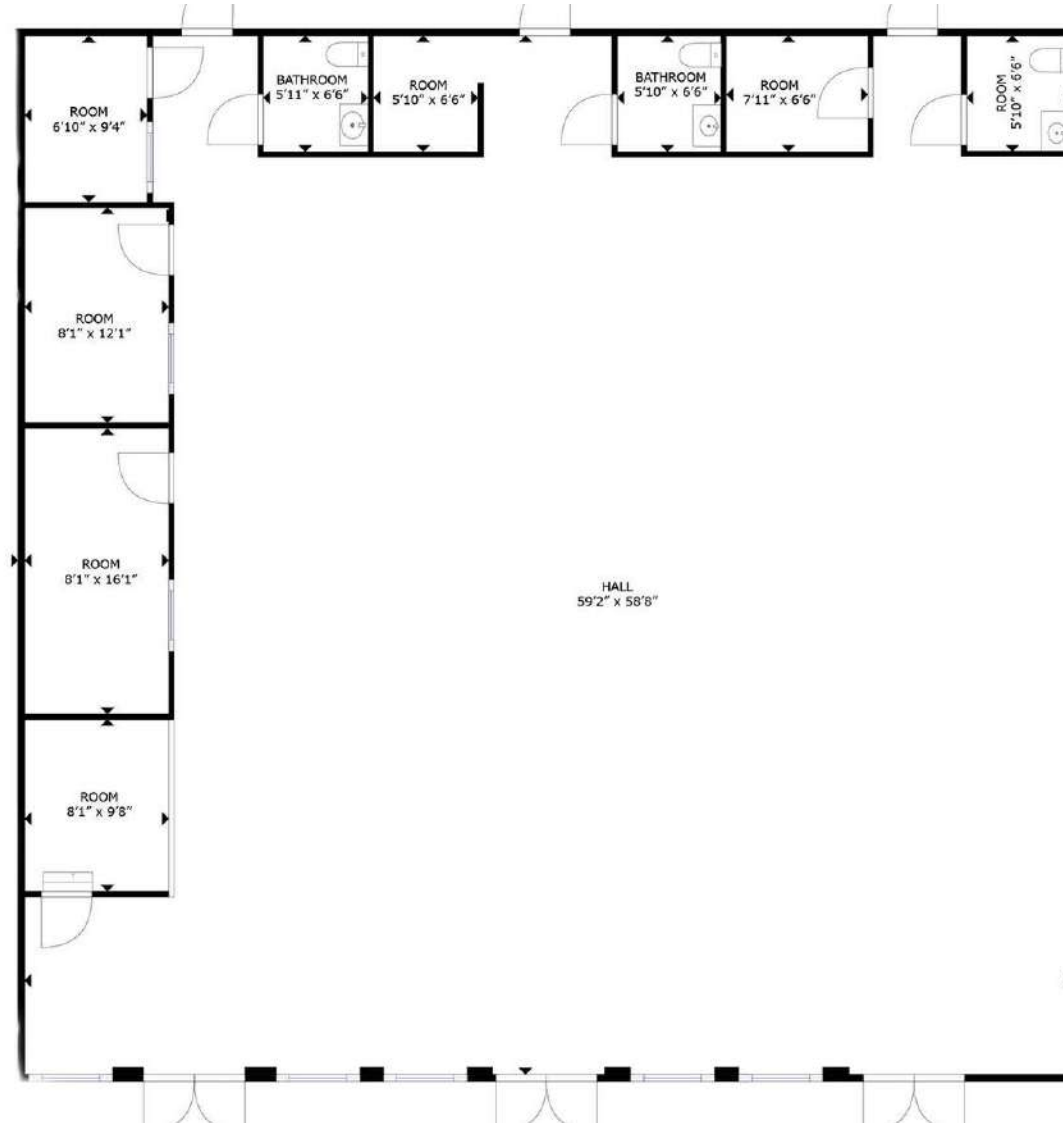
LEASE INFORMATION

Lease Type: NNN Lease Term: Negotiable
Total Space: 1,200 - 3,600 SF Lease Rate: \$22.00 SF/yr

AVAILABLE SPACES

SUITE	SIZE (SF)	LEASE RATE	AVAILABILITY	MATTERPORT
Suite 16	1,200 SF	\$22.00 SF/yr	Available	View Here
Suite 15	1,200 SF	\$22.00 SF/yr	Available	-
Suites 12-14	3,600 SF	\$22.00 SF/yr	Available 2/1/2024	View Here

Suite 12-14 Floor Plan



Suite 12-14 Photos

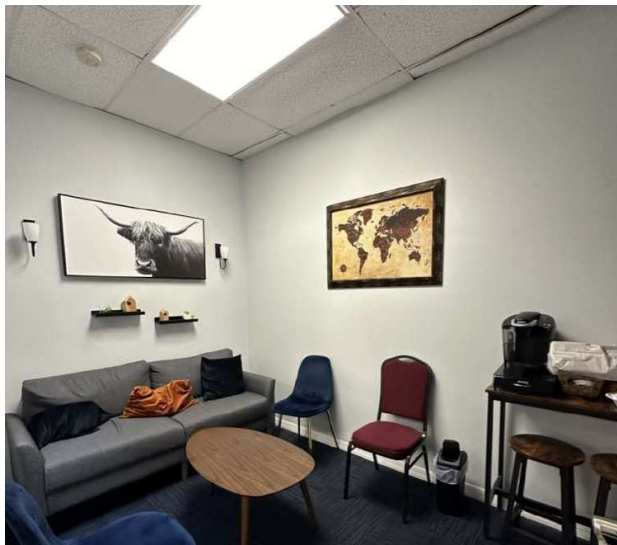


Suite 15 Floor Plan

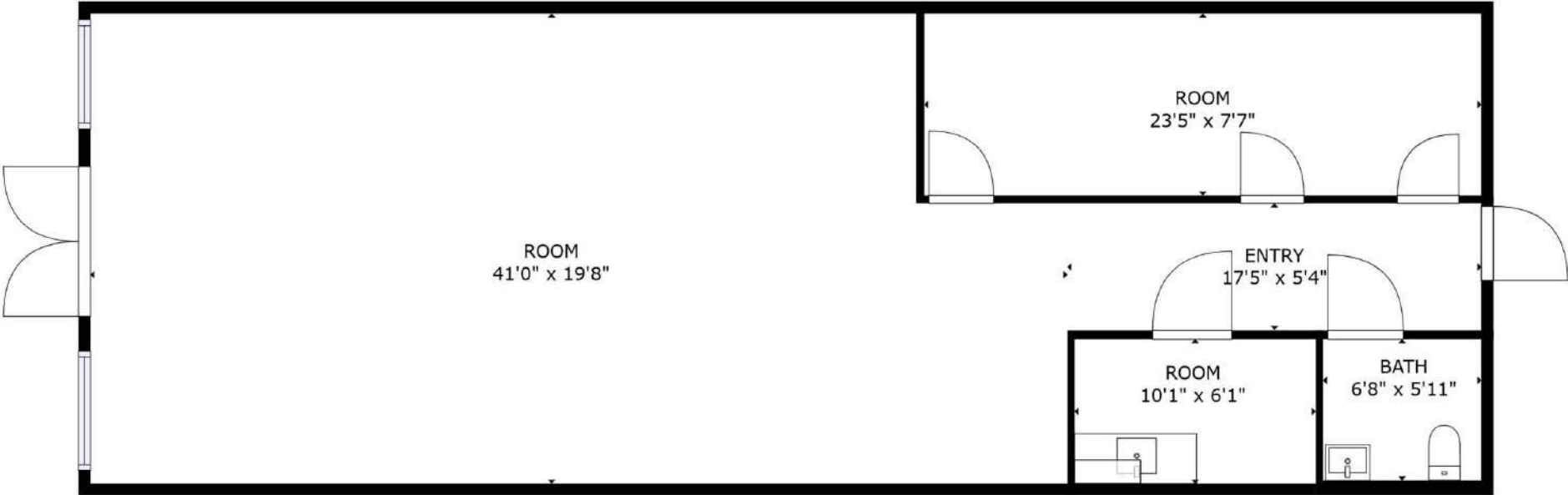


FLOOR PLAN

Suite 15 Photos



Suite 16 Floor Plan



The information presented here is deemed to be accurate, but it has not been independently verified. We make no guarantee, warranty or representation. It is your responsibility to independently confirm accuracy and completeness. All SVN® offices are independently owned and operated.

Suite 16 Photos





SOUTH LANE
OB/GYN

LABS OF AMB

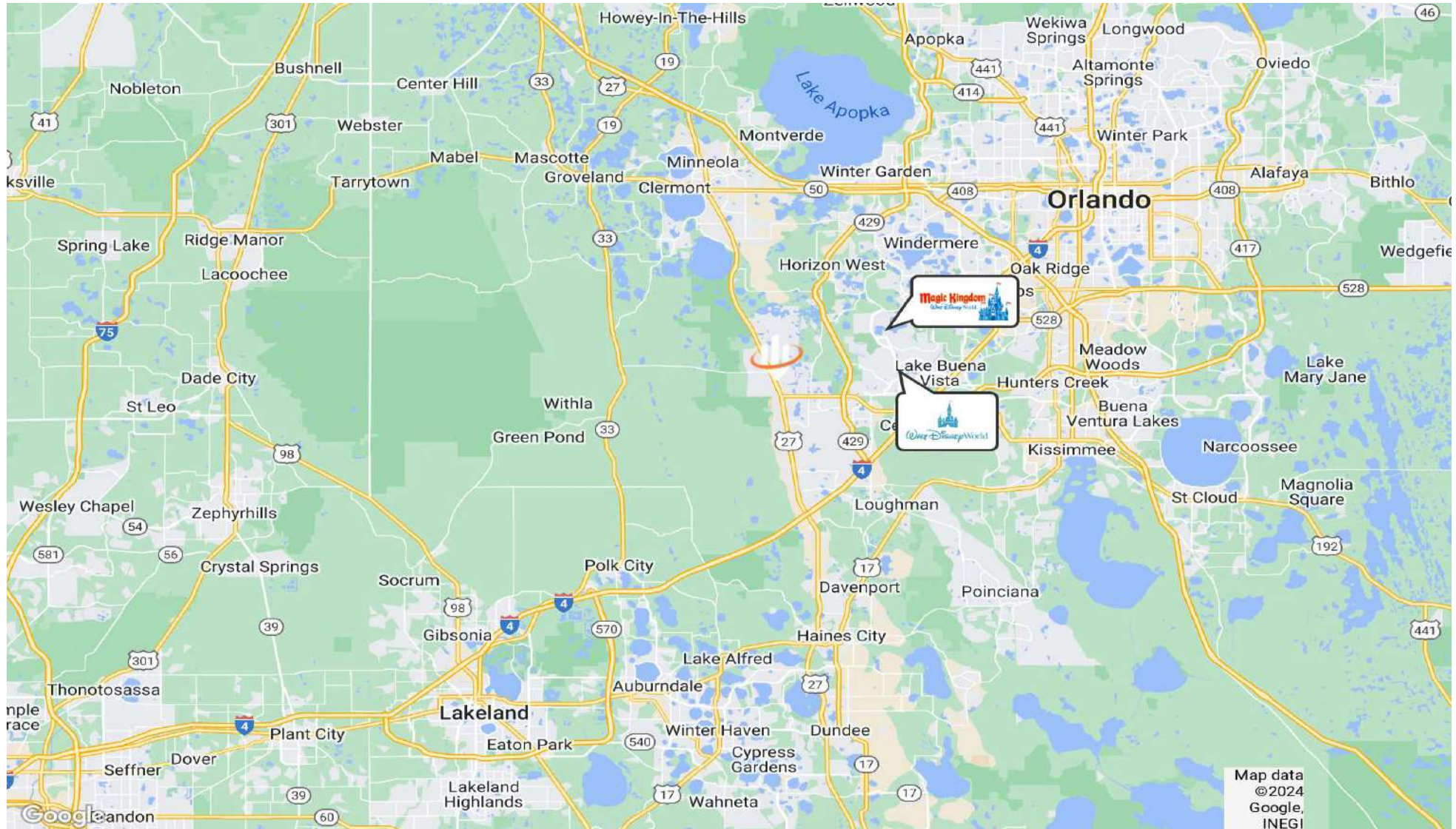
PHYSICIAN

PHYSICIAN

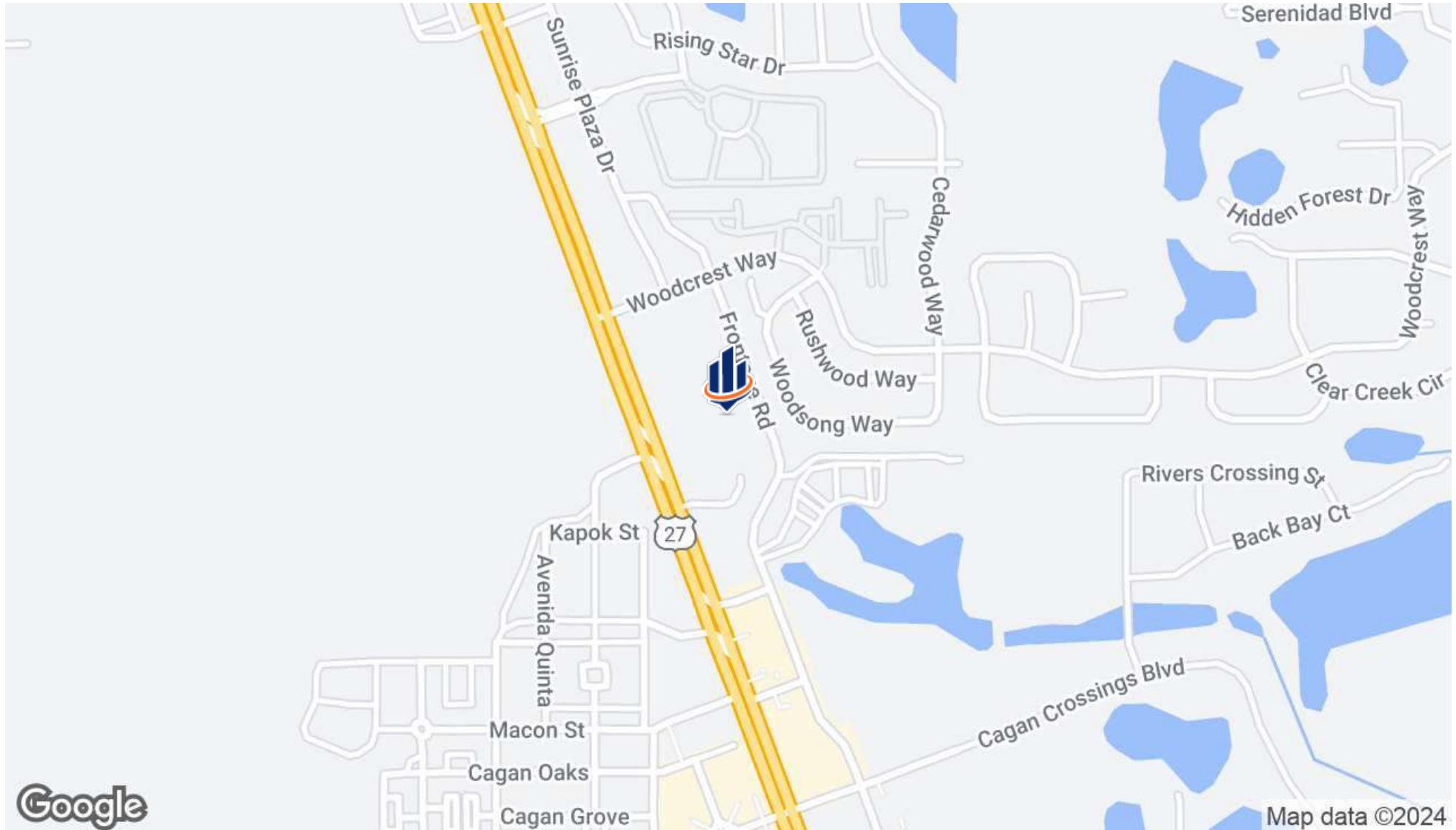
OPTOMETRY
PEDIATRICS

OPT

Regional Map



Location Map

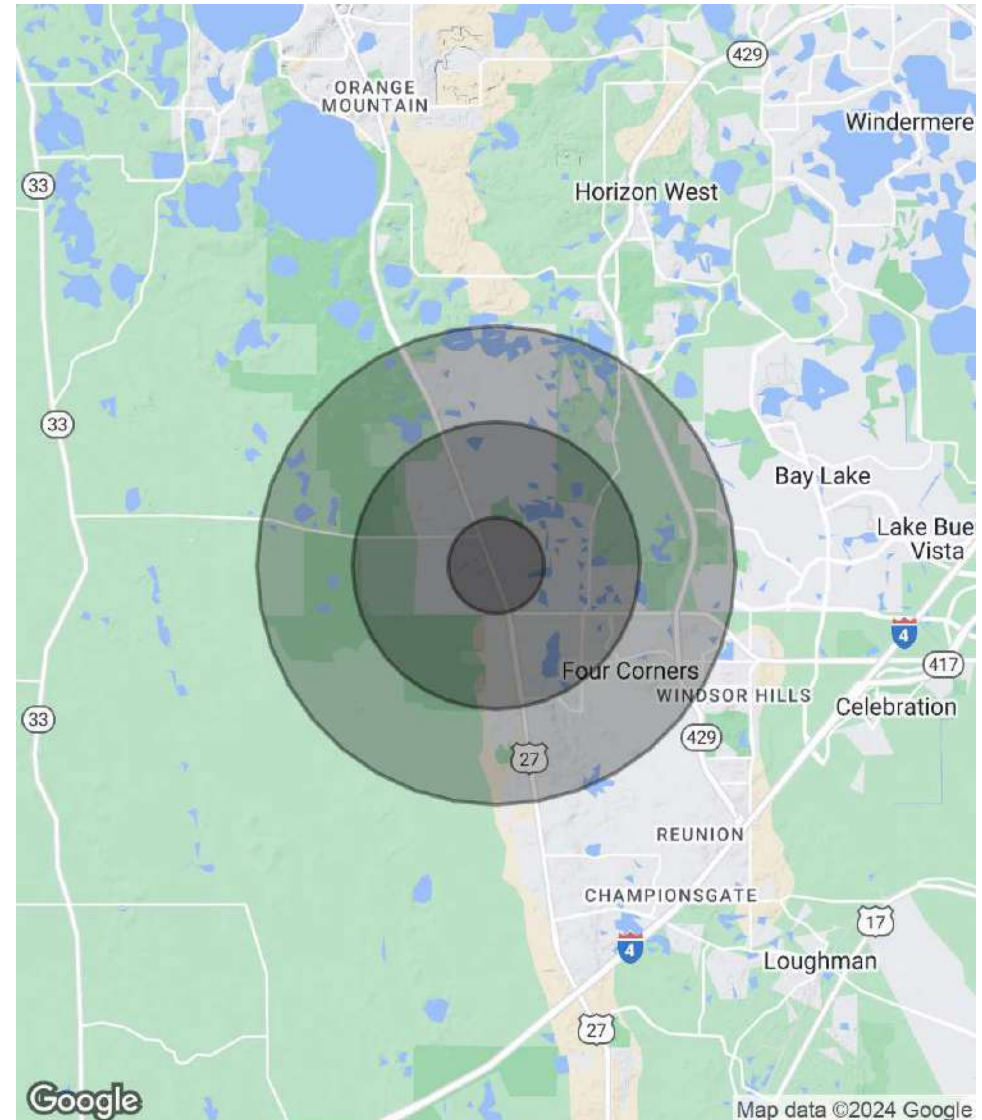


Demographics Map & Report

POPULATION	1 MILE	3 MILES	5 MILES
Total Population	5,184	31,679	41,773
Average Age	30.0	41.8	38.5
Average Age (Male)	30.0	41.2	38.0
Average Age (Female)	30.1	42.4	38.9

HOUSEHOLDS & INCOME	1 MILE	3 MILES	5 MILES
Total Households	2,223	12,031	15,421
# of Persons per HH	2.33	2.6	2.7
Average HH Income	\$61,567	\$72,415	\$73,404
Average House Value		\$150,005	\$166,913

* Demographic data derived from 2020 ACS - US Census





LAKE COUNTY FLORIDA

Founded	1887	Density	385.2 [2019]
County Seat	Tavares	Population	416,179 [2023]
Area	953 sq mi	Website	lakecountyfl.gov

Lake County is part of the Orlando-Kissimmee-Sanford, FL Metropolitan Statistical Area, and its largest city is Clermont. The county was created in 1887 from portions of Sumter and Orange counties and was named for the many lakes contained within its borders. During the 1800s, growing cotton and breeding cattle were the two main industries driving the economy. In the latter part of the 19th century, citrus tree cultivation gained momentum and eventually became the region's leading industry during the 1940s and 50s.

Lake County is the 18th largest county in Florida today, as the area has tripled in size over the past 15 years. With its Central Florida positioning, Lake County boasts great access to US Hwy 27, I-75, the Florida Turnpike, and the



CLERMONT
LAKE COUNTY

Clermont was founded in 1884 and incorporated in 1916. Located just west of Orlando and north of Walt Disney World, Clermont is part of the Orlando-Kissimmee-Sanford Metropolitan Statistical Area. As the largest city in Lake County, Clermont continues to expand along with Central Florida's growing population.

Founded	1916
Population	47,823 (2023)
Area	11.5 sq mi
Website	www.clermontfl.gov

Clermont's rolling hills and lakes are a strong draw to homebuyers, and Clermont still has that 'small town' feel they crave. Overall, lifestyle and amenities have been the primary reasons why homebuyers choose to purchase their homes in Clermont. With a surging population of over 40,000, traffic counts nearing 60,000 daily trips, and an average annual household income of more than \$68,000, Clermont is also a prime location for commercial real estate.

Major Employers	South Lake Hospital Vista Clinical and Diagnostics PUR Clinic South Lake Pain Institute University of Florida
-----------------	--

Branded as 'The Choice of Champions,' Clermont is becoming a mecca for health and fitness. The city has become a great home or training location for 20 recent Olympians. Keeping health in mind, Clermont also boasts a thriving healthcare industry with world-class orthopedics, cancer treatment, and robotic urologic services.

Retailer Map



Additional Photos





For more information visit www.SVNsaunders.com

HEADQUARTERS

1723 Bartow Rd
Lakeland, FL 33801
863.648.1528

ORLANDO

605 E Robinson Street, Suite 410
Orlando, Florida 32801
386.438.5896

NORTH FLORIDA

356 NW Lake City Avenue
Lake City, Florida 32055
352.364.0070

GEORGIA

203 E Monroe Street
Thomasville, Georgia 31792
229.299.8600

©2024 Saunders Ralston Dantzler Real Estate. All SVN® Offices Independently Owned and Operated SVN | Saunders Ralston Dantzler Real Estate is a full-service land and commercial real estate brokerage representing buyers, sellers, investors, institutions, and landowners since 1996. We are recognized nationally as an authority on all types of land, including agriculture, ranch, recreation, and residential development. Our commercial real estate services include property management, leasing and tenant representation, valuation, business brokerage, and advisory and counseling services for office, retail, industrial, and multifamily properties. Our firm also features an auction company, a forestry division, international partnerships, and extensive expertise in conservation easements. Located in Florida, Georgia, and Alabama, we provide proven leadership and collaborative expertise backed by the strength of the SVN® global platform.

