

For Lease
±20,180-40,000 SF
Office Space
with Lake Views



1100 Northpoint Parkway

West Palm Beach, FL 33407

LEASE A PORTION OR THE ENTIRE BUILDING!

Property Features

- Recently upgraded, two-story, 40,000 SF professional office building
- Great for corporate headquarters
- Large floor-to-ceiling windows with abundant natural light overlooking a beautiful lake with 1.5 miles of scenic walking trails
- Ample free parking on a newly resurfaced lot; outstanding ratio with ±200 surface spaces
- Located in West Palm Beach's premier Northpoint Corporate Park, off 45th Street just west of I-95
- Outstanding central location, minutes from the best of West Palm Beach and Palm Beach Gardens – without the inflated rental rates
- Can be made available for sale – call brokerage team for more details!

Key Highlights



Fast, easy commute,
directly adjacent to I-95's
45th Street exit



Modern lobby and
common area
upgrades in 2020



Near tons of retail, dining,
and professional services



Beautiful lake views
and walking trail



Ample parking and
newly resurfaced lot

Jason L. Sundook, SIOR, Principal
561-471-8000 | jsundook@mhcreal.com

Patrick Almand, Commercial Associate
443-370-8665 | jsundook@mhcreal.com



FOR LEASE: 1100 NORTHPOINT PKWY, WEST PALM BEACH



SUBJECT PROPERTY

**In the heart of it all.
A fast, easy commute.**



- 1 Mile I-95
- 6 Miles Florida's Turnpike



- 3 Miles Tri-Rail Magnolia Park
- 7 Miles Brightline West Palm Beach Station



- 7 Miles Downtown West Palm Beach
- 7 Miles West Palm Governmental Center
- 8 Miles Downtown at the Gardens



- 8 Miles Palm Beach International Airport
- 28 Miles Boca Raton Airport
- 54 Miles Fort Lauderdale International Airport

NO WARRANTY OR REPRESENTATION, EXPRESS OR IMPLIED, IS MADE AS TO THE ACCURACY OF THE INFORMATION CONTAINED HEREIN, AND THE SAME IS SUBMITTED SUBJECT TO ERRORS, OMISSIONS, CHANGE OF PRICE, OR WITHDRAWAL WITHOUT NOTICE.



561 471 8000



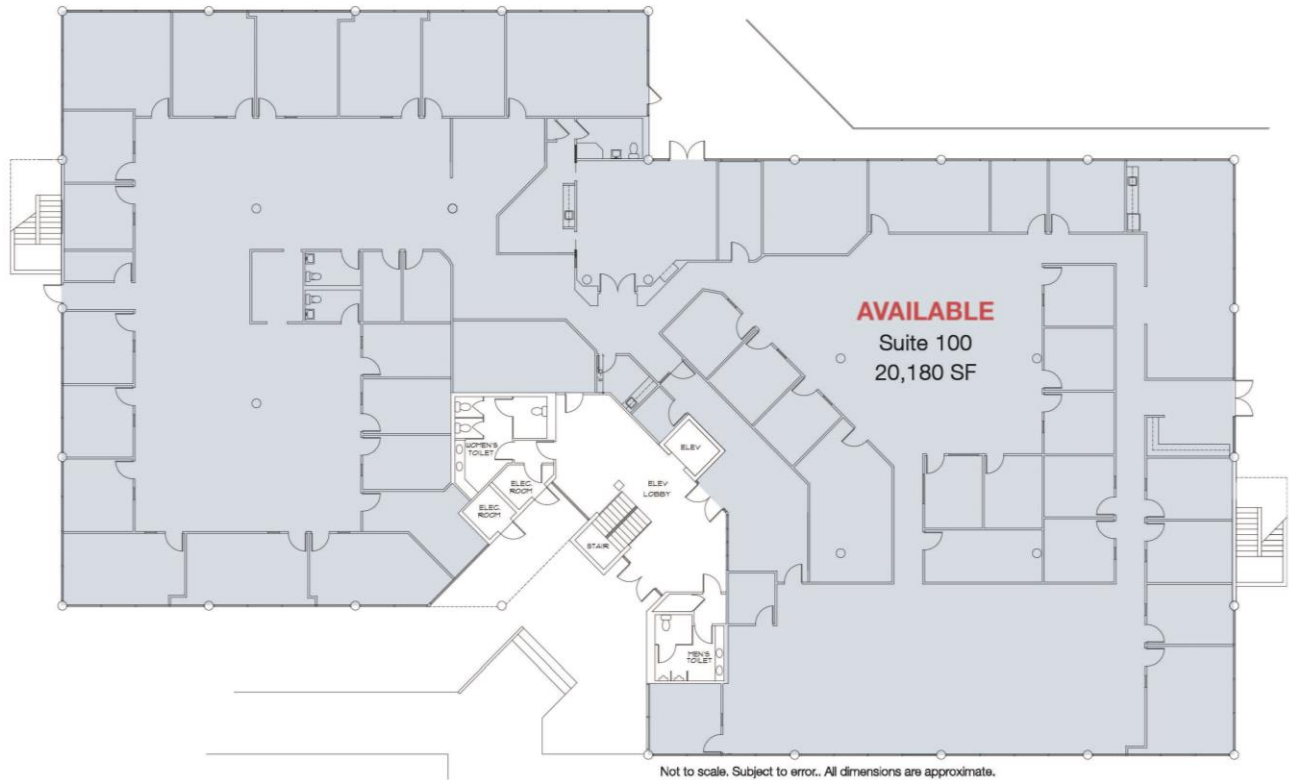
1601 Forum Place, Suite 700
West Palm Beach, FL 33401



www.mhcreal.com

FOR LEASE: 1100 NORTHPOINT PKWY, WEST PALM BEACH

Highly Improved, Full Ground-Floor Suite Available



Suite 100
20,180 SF

Experience corporate excellence and fantastic tropical lake views in this spacious, efficient, and modern office space.



For More Information:

Jason L. Sundook, SIOR | jsundook@mhcreal.com

Patrick Almand | palmand@mhcreal.com



561 471 8000



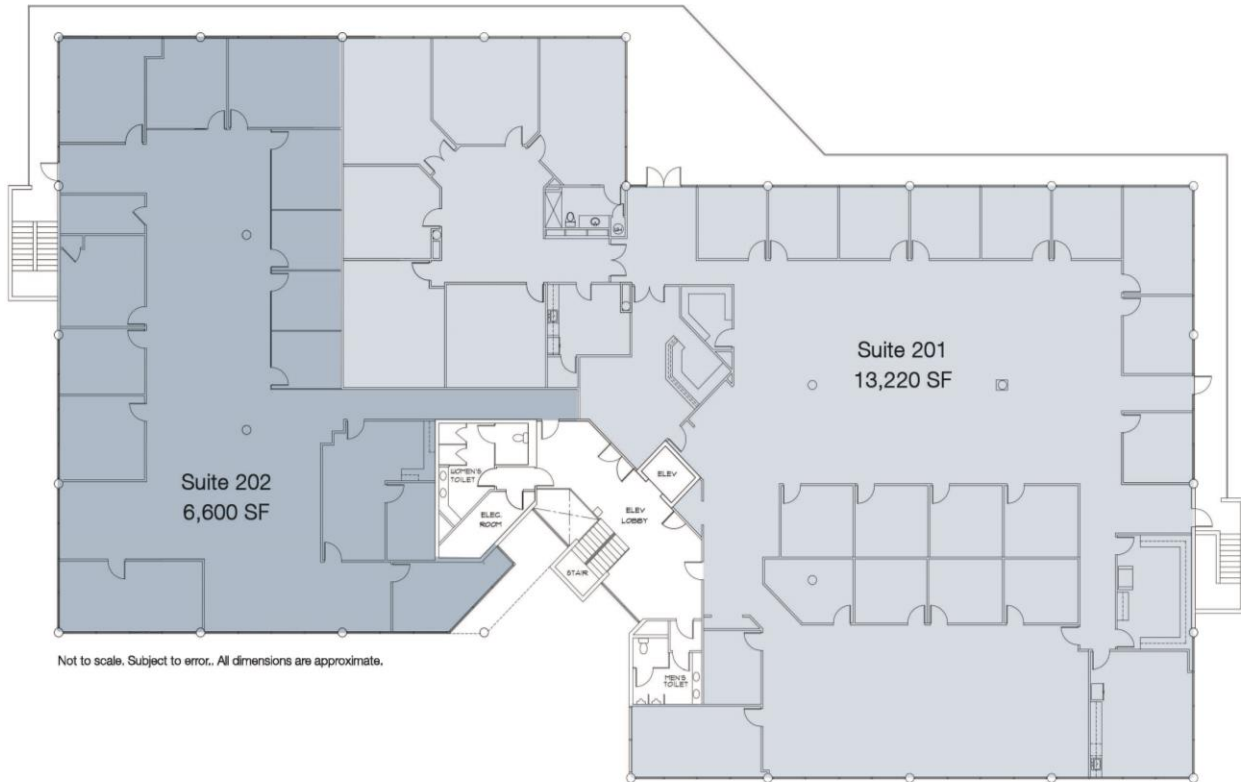
www.mhcreal.com

FOR LEASE: 1100 NORTHPOINT PKWY, WEST PALM BEACH

Larger Space Requirement? No Problem.

Lease a Portion or the Entire ±40,000 SF Building!

A tenant who leases the ground-floor space can also secure additional second-floor space up to the entire ±40,000 SF building.



FOR LEASE: 1100 NORTHPOINT PKWY, WEST PALM BEACH
±20,180-40,000 SF Lakeview Office Space Near I-95
UPGRADED OFFICE BUILDING WITH CONTEMPORARY FINISHES



ELEVATE YOUR BUSINESS IN WEST PALM BEACH. CALL TODAY!

Jason L. Sundook, SIOR, Principal
561-471-8000 | jsundook@mhcreal.com

Patrick Almand, Commercial Associate
443-370-8665 | jsundook@mhcreal.com

NO WARRANTY OR REPRESENTATION, EXPRESS OR IMPLIED, IS MADE AS TO THE ACCURACY OF THE INFORMATION CONTAINED HEREIN, AND THE SAME IS SUBMITTED SUBJECT TO ERRORS, OMISSIONS, CHANGE OF PRICE, OR WITHDRAWAL WITHOUT NOTICE.

