

Cypress Landing Plaza

1915 S Dean Road, Orlando, FL 32825

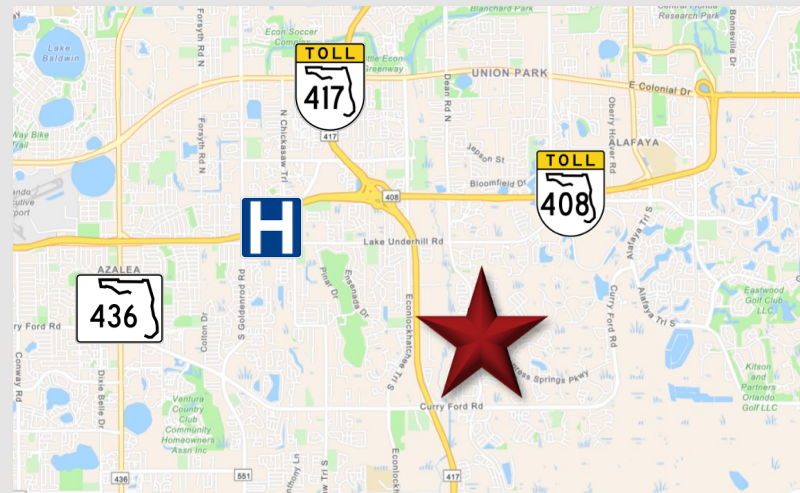
 **Palkiper**
Commercial Real Estate Services
Licensed Real Estate Broker



Lease Rate: \$26 NNN

LOCATION DETAILS

Located on S Dean Road (+20,000 AADT), less than a mile east of the 417 Expressway. Situated directly in front of the Cypress Springs community, which has over 1,500 households, and adjacent to a busy daycare center. Less than 3 miles from AdventHealth East Orlando Hospital. Nearby 3 elementary schools and 1 middle school. Less than a 5-minute drive from the 417 and 408 interchange, providing easy access to major transportation routes across Central Florida.



LISTING DETAILS

- **±3,520 SF** End-cap space available. **Recently built out** for karate, dance, or similar fitness / recreational focused businesses
- **1,800 SF** in-line space available. Ideal for tenants that require a **custom build-out**
- Retail, medical, and office uses allowed
- 91 Parking spaces (6.89/1000SF)
- Monument and storefront signage provided
- **Lease incentives available to qualified tenants.** (Contact broker for more information)

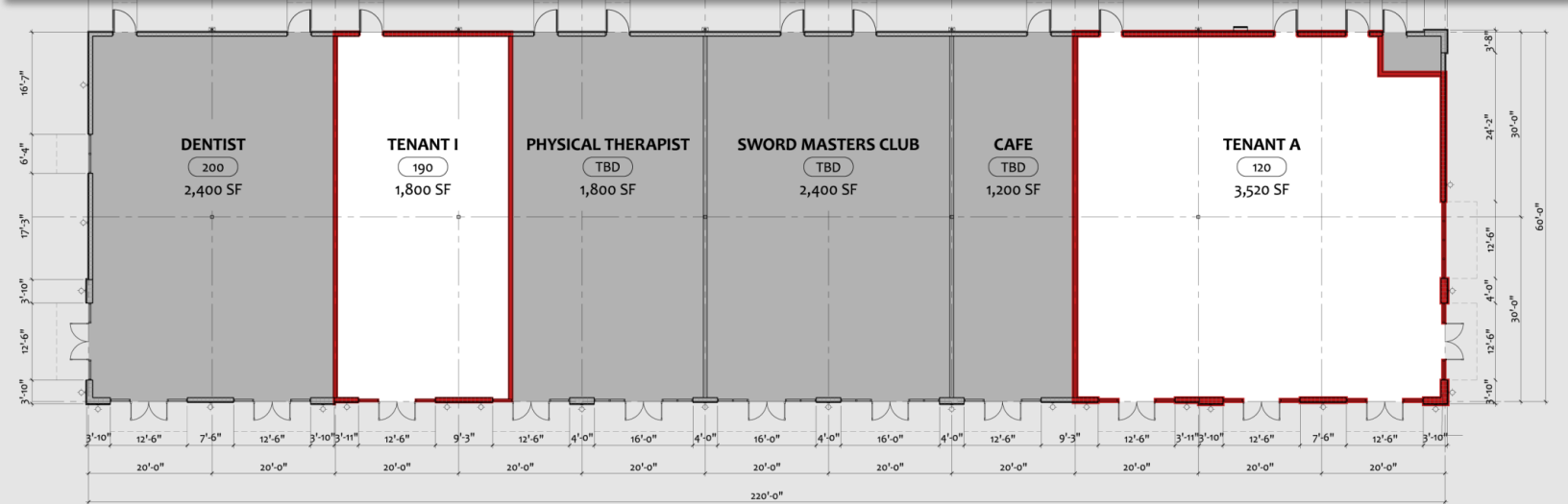
2022 DEMOGRAPHICS	1-MILE	3-MILE	5-MILE
Population	8,513	85,891	255,387
Average HH Income	\$106,552	\$93,329	\$83,489
Median HH Income	\$89,315	\$75,323	\$62,218

CONTACT FOR MORE INFORMATION:

Marie Shorey, CCIM
(407) 383-8142
marie@palkiper.com

Cypress Landing Plaza

1915 S Dean Road, Orlando, FL 32825



01 FLOOR PLAN
1/8" = 1'-0"



CYPRESS LANDING

DENTIST

AVAILABLE

THERAPIST

AVAILABLE

RADIOLOGIST

SPACE AVAILABILITY	
Suite #	Size (SF)
120	3,520
190	1,800

CONTACT FOR MORE INFORMATION:

Marie Shorey, CCIM

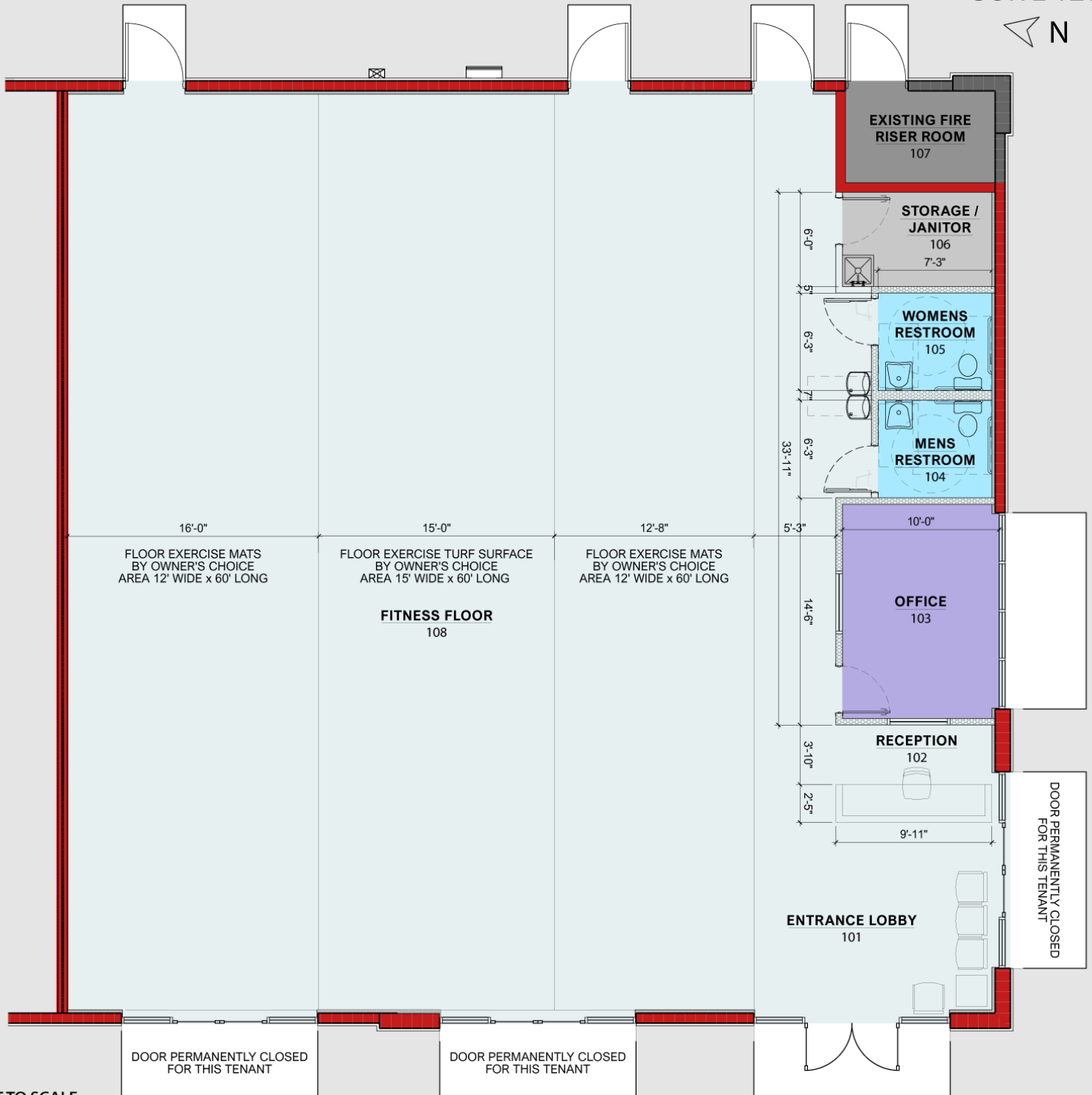
(407) 383-8142

marie@palkiper.com

Cypress Landing Plaza

1915 S Dean Road, Orlando, FL 32825

SUITE 120



NOT TO SCALE

Illustrated for marketing purposes only.
Layout and furnishes may vary. Subject
to continued revisions.

CONTACT FOR MORE INFORMATION:

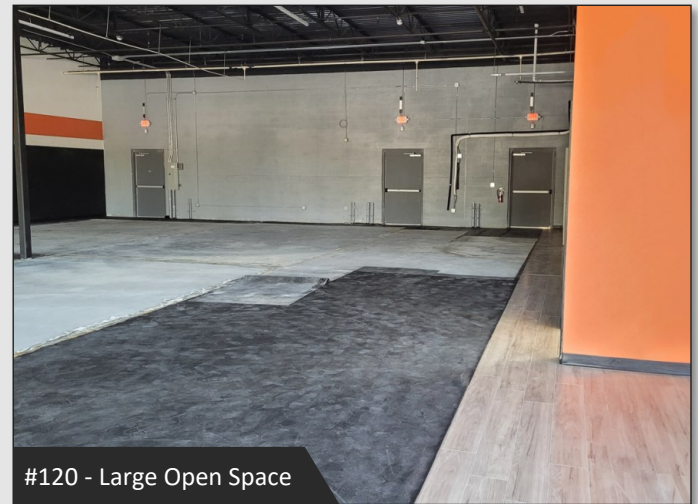
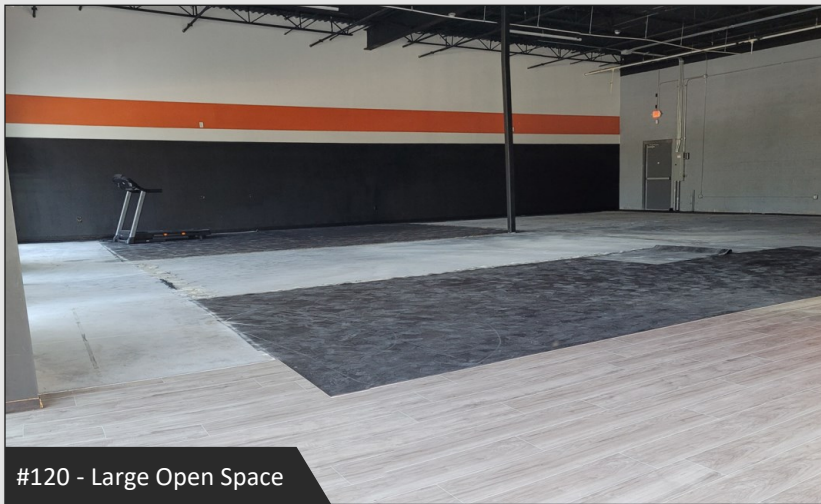
Marie Shorey, CCIM

(407) 383-8142

marie@palkiper.com

Cypress Landing Plaza

1915 S Dean Road, Orlando, FL 32825



CONTACT FOR MORE INFORMATION:

Marie Shorey, CCIM

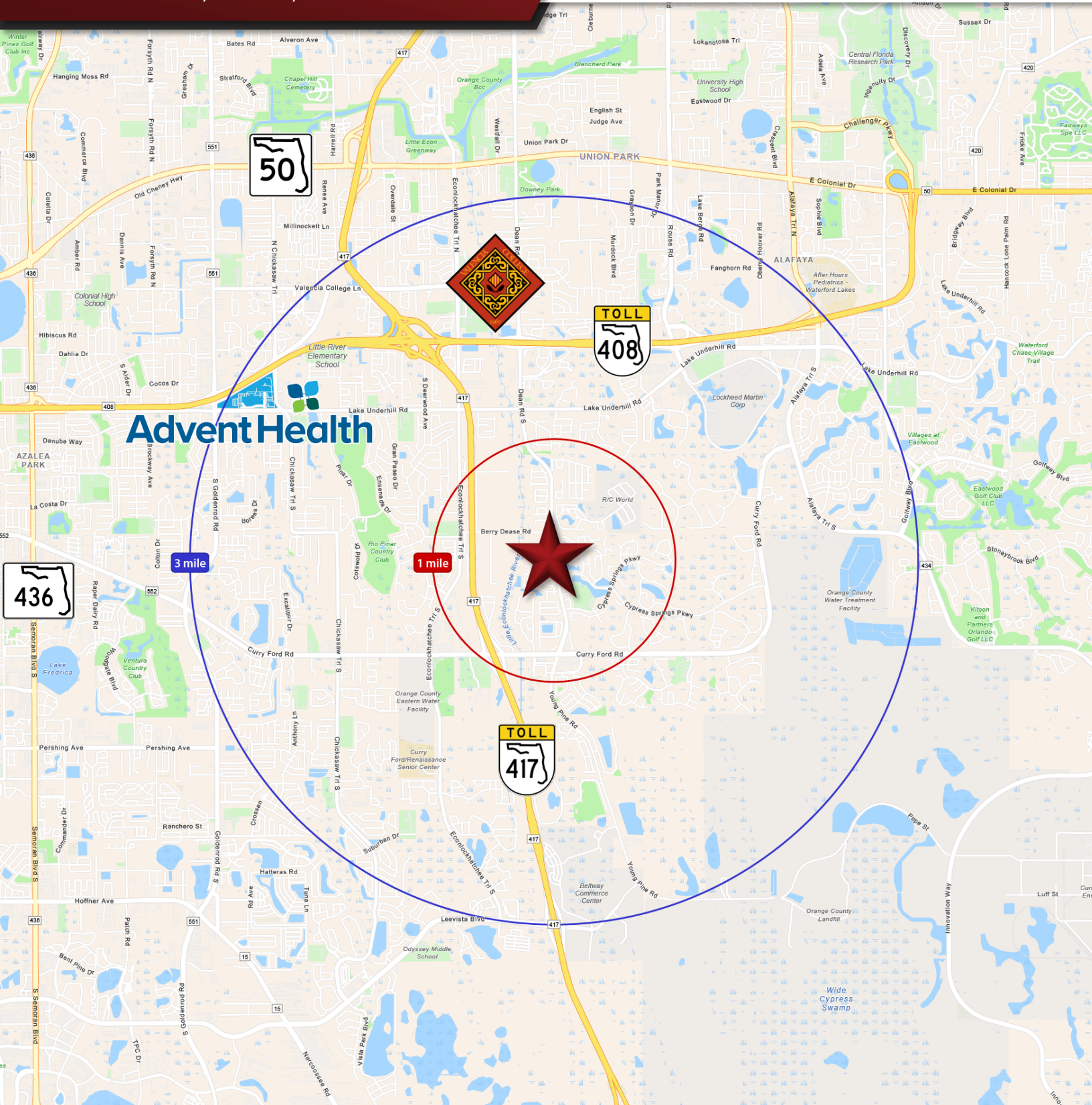
(407) 383-8142

marie@palkiper.com

Cypress Landing Plaza

1915 S Dean Road, Orlando, FL 32825

 **Palkiper**
Commercial Real Estate Services
Licensed Real Estate Broker



CONTACT FOR MORE INFORMATION:

Marie Shorey, CCIM

(407) 383-8142

marie@palkiper.com

Palkiper has made every effort to obtain the information regarding this property from sources deemed reliable. However, we cannot warrant the complete accuracy thereof subject to errors, omissions, change of price, rental, or other conditions, prior sale, lease or financing or withdrawal without notice.
Licensed Real Estate Broker

06/14/24 15:20