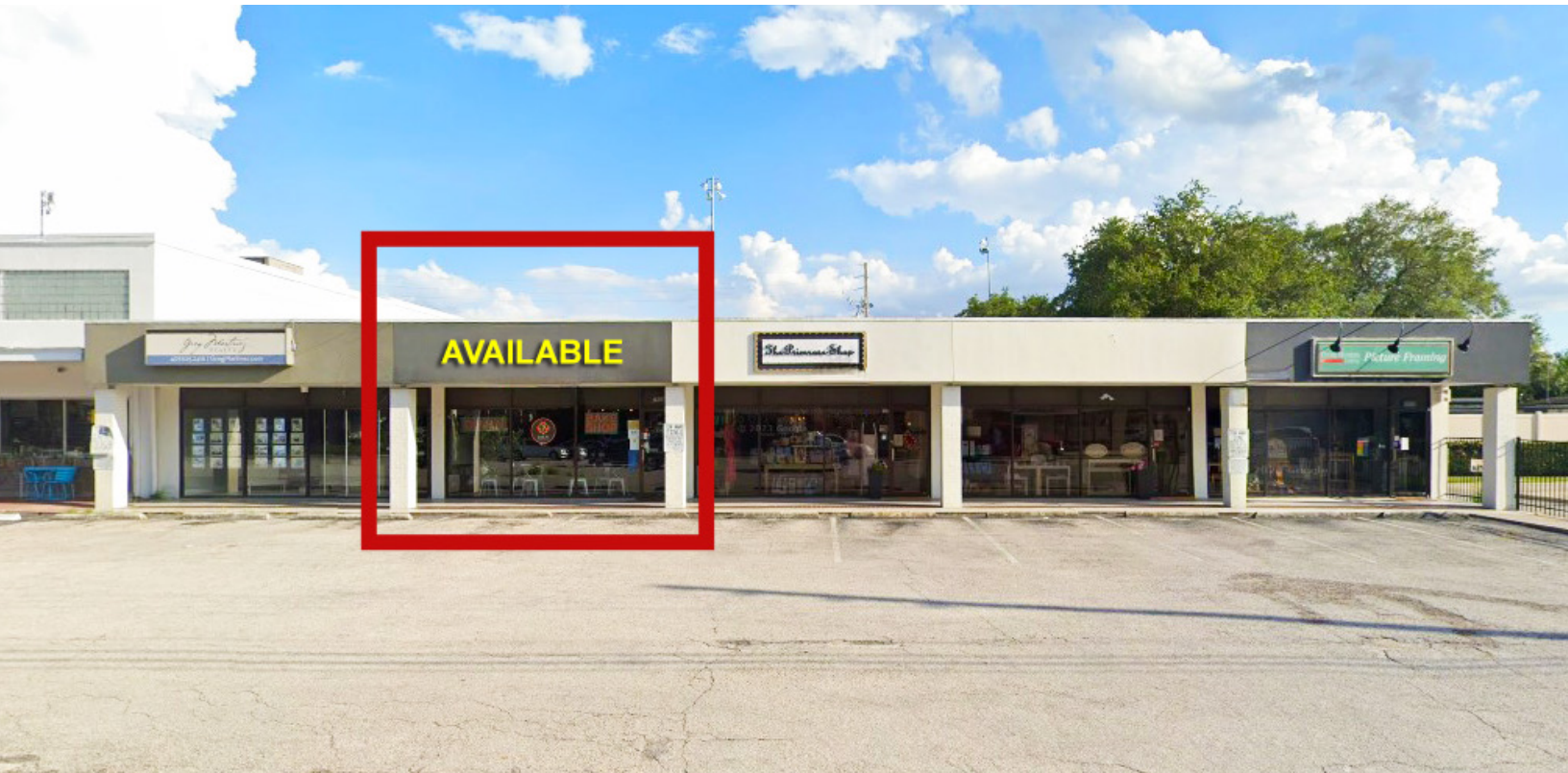


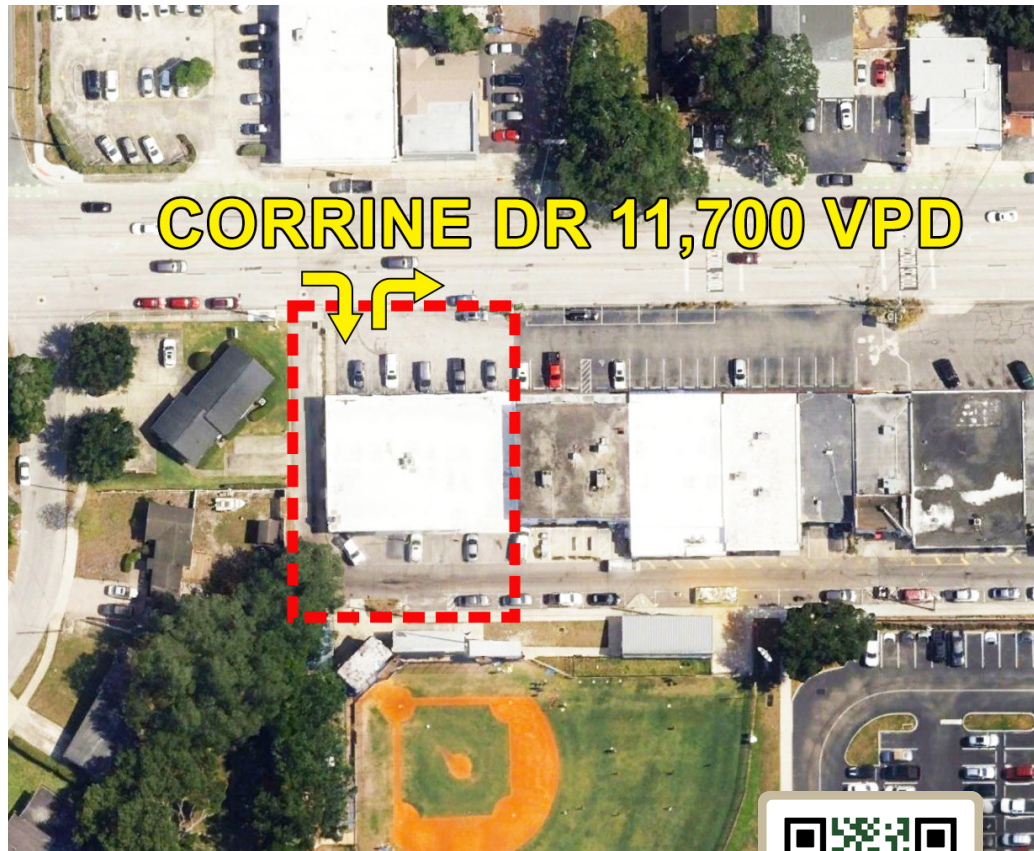
# FOR LEASE

2806 Corrine Dr, Orlando, FL



## HIGHLIGHTS

- 1,200 SF retail space.
- Local ownership and management.
- Located in line with unique local businesses.
- Great visibility on Corrine Drive.
- Excellent demographics.
- Situated within half a mile of East End Market.
- Positioned directly in front of Audubon Elementary School and Audubon Middle School.
- Close proximity to the Baldwin Park community.



# FOR LEASE

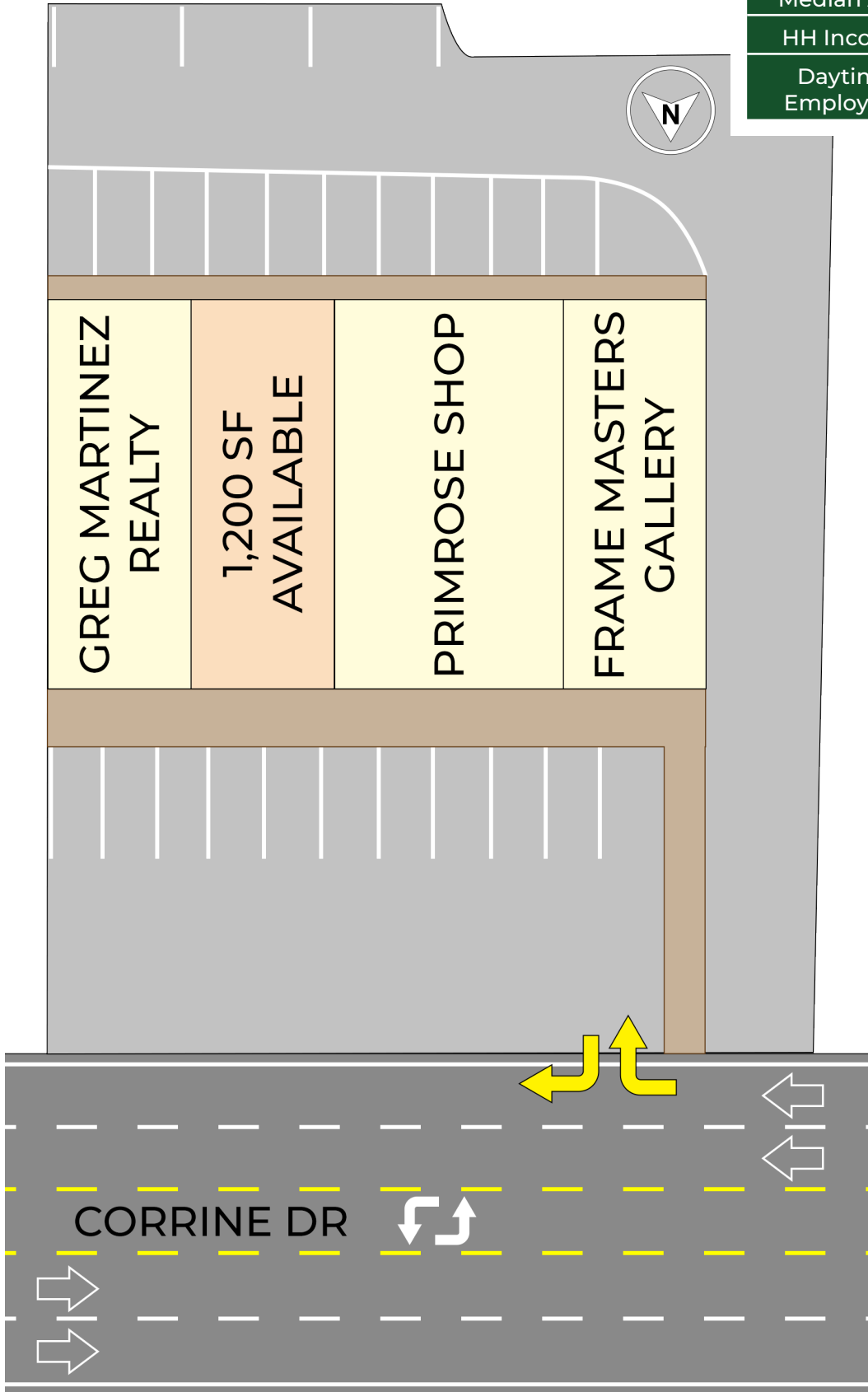
2806 Corrine Dr, Orlando, FL



COMMERCIAL REAL ESTATE SERVICES

## SITE PLAN

Demographics	1 Mile	3 Miles	5 Miles
Population	11,123	103,835	294,138
Median Age	39.9	39.2	38.5
HH Income	\$121,044	\$114,238	\$95,933
Daytime Employees	15,575	173,629	336,138



# FOR LEASE

2806 Corrine Dr, Orlando, FL

