

**FOR LEASE**

Owned and Operated by



# Eastgate Distribution Center

9824 Currie Davis Drive, Tampa, FL

## 12,282 SF

A photograph of a large white sign for the Eastgate Distribution Center. The sign is set against a background of palm trees and a clear blue sky. The sign text reads: 'Eastgate Distribution Center' in large black letters, 'COBALT INDUSTRIAL REIT' in smaller blue and white letters, and '9820-9876 Currie Davis Dr.' in black letters.

# Eastgate Distribution Center

COBALT INDUSTRIAL REIT

9820-9876 Currie Davis Dr.

### LEASING INFO & CONTACT

**Sam Korolos**

(704) 989-1327 / [sam.korolos@cushwake.com](mailto:sam.korolos@cushwake.com)

**Jessica Mizrahi, SIOR**

(813) 204-5323 / [jessica.mizrahi@cushwake.com](mailto:jessica.mizrahi@cushwake.com)

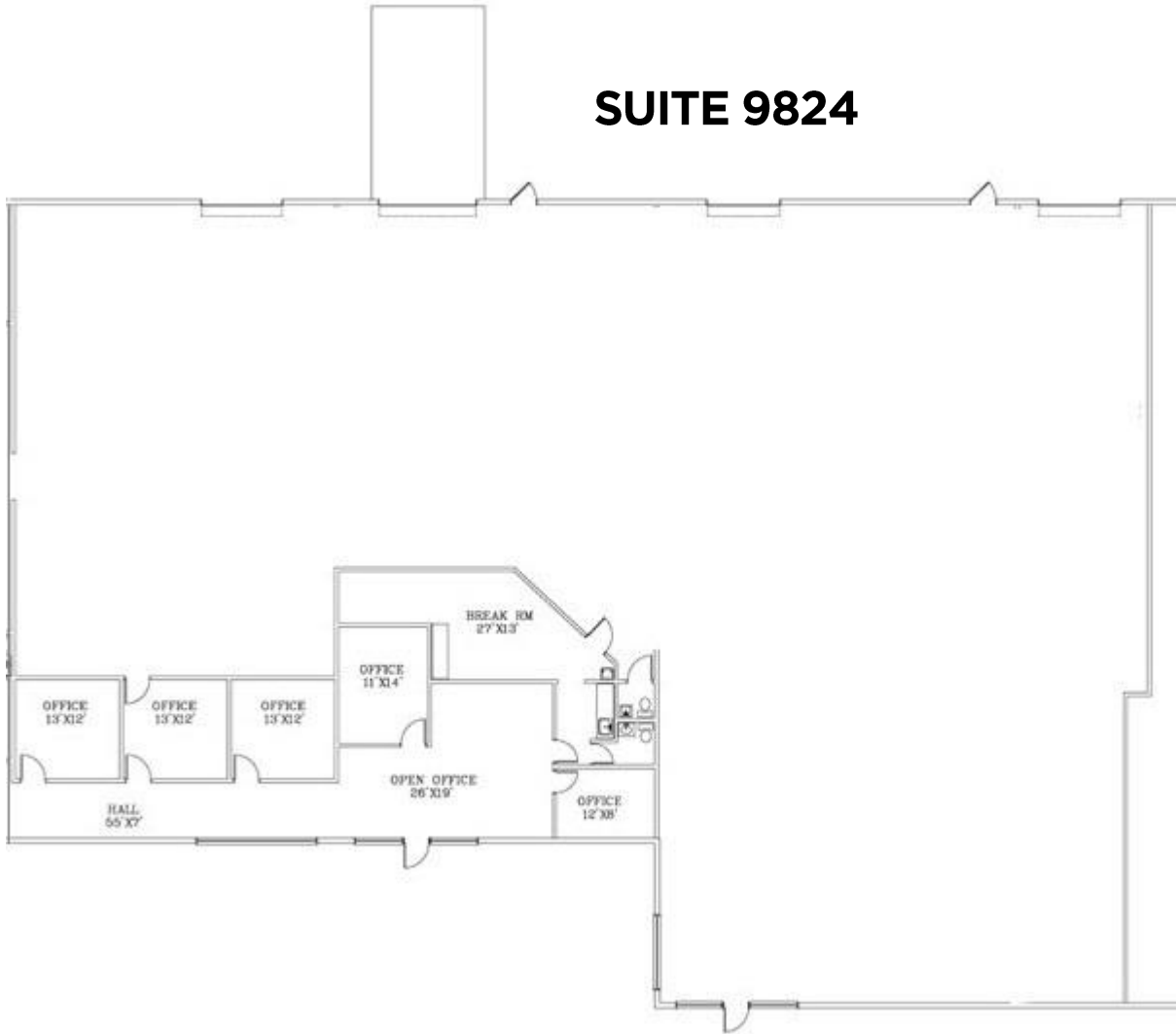
**Lisa Ross, SIOR**

(813) 424-3211 / [lisa.ross@cushwake.com](mailto:lisa.ross@cushwake.com)

**Trey Carswell, SIOR**

(813) 230-6131 / [trey.carswell@cushwake.com](mailto:trey.carswell@cushwake.com)

This is not an offer or acceptance of an offer to lease space. A lease will only be offered or made in a written agreement signed by landlord. No representation or warranty of any kind is made by landlord unless set forth in a written definitive lease executed by the landlord.

**SUITE 9824****PROPERTY HIGHLIGHTS**

<b>TOTAL SF</b>	12,282 SF
<b>OFFICE SF</b>	2,042 SF
<b>SPRINKLERS</b>	Fully sprinklered with wet pipe system
<b>POWER</b>	120/240 Volts, 125 Amp, 3 Phase

<b>OCCUPANCY</b>	April 1, 2024
<b>CLEAR HEIGHT</b>	20'
<b>LOADING</b>	Three (3) Dock High Doors at 30" One (1) Drive-In Ramp

**AREA HIGHLIGHTS**

Centrally located in the East Tampa Submarket on 50th St

Immediate access to I-4, I-75, The Lee Roy Selmon Expressway, and Adamo Drive (SR 60)