

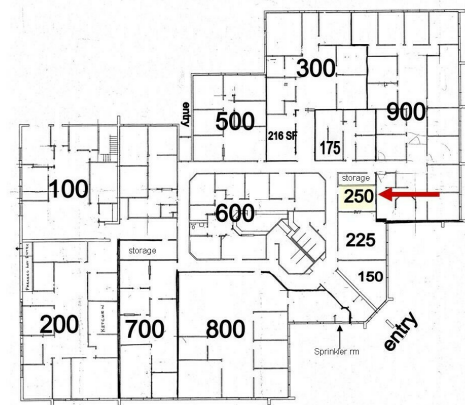
# 333 Commerce Dr Suite 250

Crystal Lake, IL 60014

## For Lease

MLS #12081484

OFFICE



OFFICE 175 SF

\$265./MO. (FULL SERVICE) \$18.17 PSF

### OFFICE SUITE AVAILABLE

Located in this multi-tenant building with one remaining space for lease.

**SUITE 250:** 175 SF features open space with coffee area.

The hallways and two common bathrooms were recently remodeled. Front and rear parking lots with ample spaces.

Gross rent includes real estate taxes, CAM and utilities. Only \$265/mo.

### Specifications

Building Size:	20,617 SF
Year Built:	1985
HVAC System:	GFA / Central Air
Electrical:	100 amp
Sprinklers:	No
Washrooms:	Common
Ceiling Height:	9 ft
Parking:	80
Sewer/Water:	City
Zoning:	O
Utilities:	Included
CAM & Taxes	Included
PIN #:	14-32-177-012

[CLICK HERE TO VIEW OUR WEBSITE](#)

No warranty or representation is made as to the accuracy of the foregoing information. Terms of sale or lease and availability are subject to change or withdrawal without notice. This document is for information purposes only. No offer of sub-agency is being made.



[www.PremierCommercialRealty.com](http://www.PremierCommercialRealty.com) | 847.854.2300 | 9225 S. Route 31, Lake in the Hills, IL 60156

Senior Broker

**Michael Deacon**

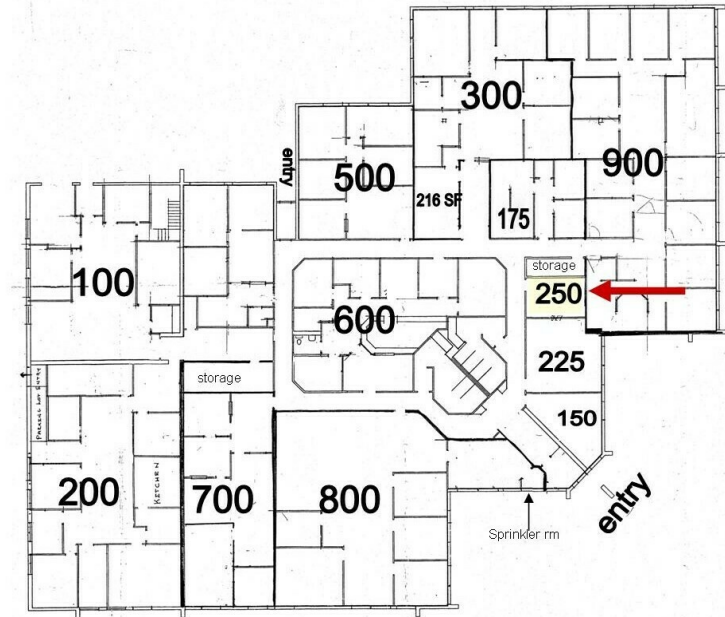
[MichaelD@PremierCommercialRealty.com](mailto:MichaelD@PremierCommercialRealty.com)

O: 847.854.2300 xx28 C: 815.814.6500

**333 Commerce Dr Suite 250**  
Crystal Lake, IL 60014

**For Lease**

**OFFICE**



[CLICK HERE TO VIEW OUR WEBSITE](#)

*No warranty or representation is made as to the accuracy of the foregoing information. Terms of sale or lease and availability are subject to change or withdrawal without notice. This document is for information purposes only. No offer of sub-agency is being made.*



[www.PremierCommercialRealty.com](http://www.PremierCommercialRealty.com) | 847.854.2300 | 9225 S. Route 31, Lake in the Hills, IL 60156

Senior Broker  
**Michael Deacon**  
MichaelD@PremierCommercialRealty.com  
O: 847.854.2300 xx28 C: 815.814.6500