

THE ACCESSO ONE OFFICE BUILDING



5,956 SF PENTHOUSE CORPORATE HEADQUARTERS



100 N. FEDERAL HIGHWAY
HALLANDALE BEACH, FL 33009
HALLANDALE BEACH BLVD & FEDERAL HWY

EXCLUSIVITY AND FULL FLOOR PRIVACY
INCREDIBLE VIEWS, PRIVATE BALCONIES!

EXCEPTIONAL DESIGN AND FINISHES
AVAILABLE "PLUG AND PLAY"

EXCELLENT AREA AMENITIES
AVENTURA MALL, DIPLOMAT HOTEL,
GULFSTREAM PARK CASINO, RESTAURANTS,
HALLANDALE OASIS AND MORE

MINUTES TO NEW AVENTURA
BRIGHTLINE STATION

\$42 PSF NNN, FREE PARKING



5th Floor East Balcony



5th Floor Break Room/Partial



Building Lobby



5th Floor Corner Office/West Balcony



5th Floor Managers Office

Architecture By
ARArchitecture, LLC.
7700 Congress Ave., Suite #1117, Boca Raton, Florida 33487 Phone 561.241.8376 E-mail adam@ar-architecturefirm.com

Design by International Consultant
Celina Bentata



5th Floor Common Area



5th Floor Atrium



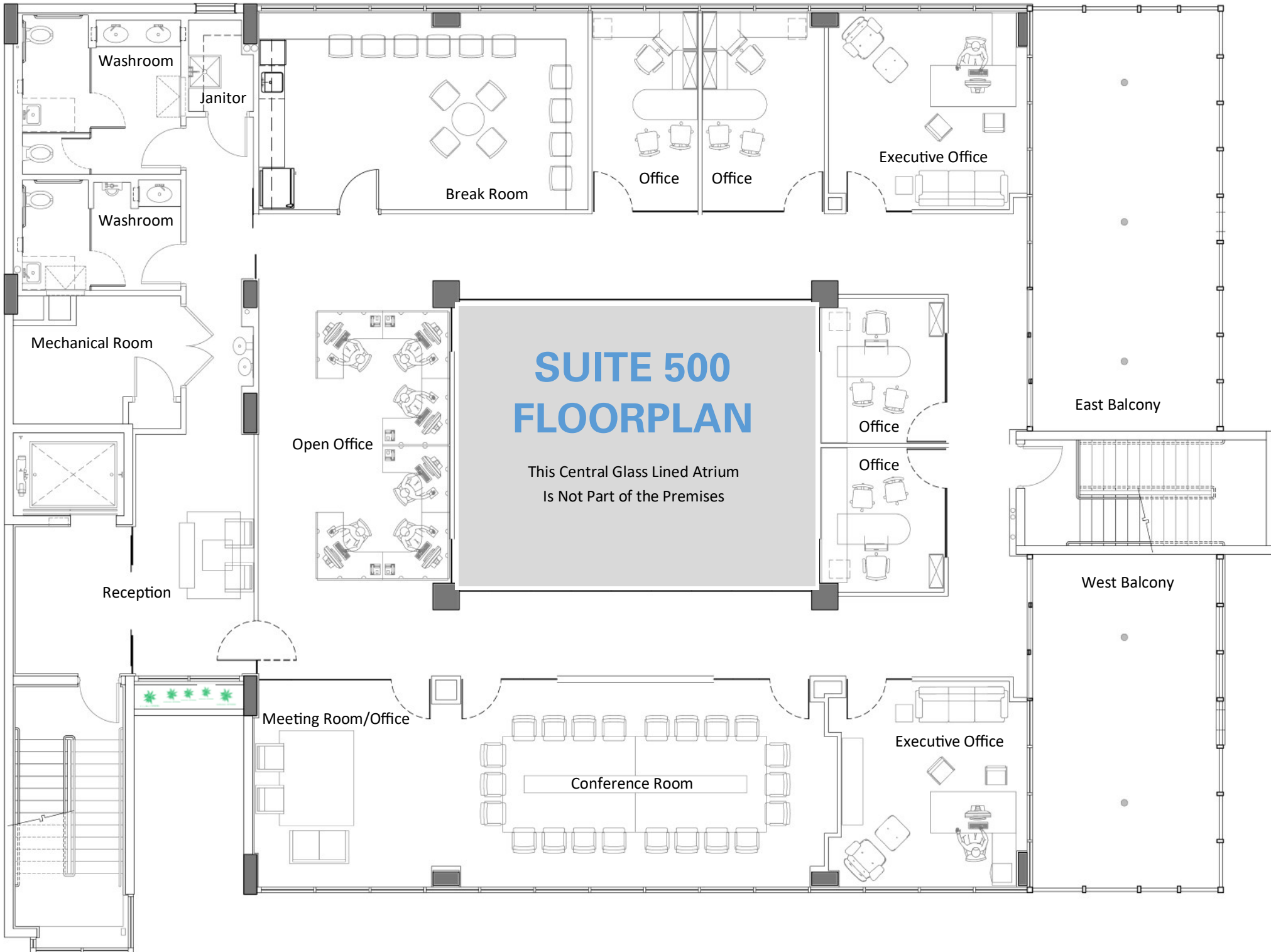
5th Floor Typical Office



5th Floor Entrance Area



5th Floor Divisible Conference Room



**ELECTRONIC ACCESS SYSTEMS
GORGEOUS COMMON AREAS**

**TENANT CONTROLLED A/C
FREE SURFACE PARKING**



FORT LAUDERDALE-HOLLYWOOD
INTERNATIONAL AIRPORT
BROWARD COUNTY, FLORIDA

Hollywood
Broadwalk &
Beach

Hallandale
Beach

AIA

Sunny
Isles

INTERSTATE
95

1

Mardi Gras
Racetrack &
Gaming Center

Accesso One Building

E. Hallandale Beach Blvd.

Gulfstream Park & Casino

Aventura
Mall

Turnberry Isle
Country Club
Golf Course

Wm Lehman Cswy.

Distance	
Gulfstream Park and Casino	0.6 miles
Mardi Gras Racetrack & Gaming Center	0.9 miles
Hallandale Beach	1.6 miles
Hollywood's Arts Park at Young Circle	2.2 miles
Aventura Mall	2.5 miles
Interstate 95	2.5 miles
Hollywood Broadwalk & Beach	4.4 miles
Florida's Turnpike/Hollywood Blvd. Exit	7.0 miles
Hollywood/Ft. Lauderdale Int'l Airport	7.0 miles
Port Everglades	8.3 miles
Downtown Ft. Lauderdale	8.7 miles

**City of Hallandale Beach
Upscale Location, Educated Workforce**

**40,000 VEHICLES PASS THIS BUILDING DAILY!
Minutes to Port, Airport & Wonderful Amenities**

This magnificent, 5-story building was completed in 2020, fronting US-1 off Hallandale Beach Blvd., a stone's throw to Gulfstream Park & Casino, minutes to great amenities such as Downtown Ft. Lauderdale, the beaches, Hollywood Arts Park, Aventura Mall & Sunny Isles. Enjoy wonderful area restaurants and easy access to Ft. Lauderdale Airport, Port Everglades, I-95, I-595, & Florida's Turnpike. Public Transit stops in front of the building and there's a new Brightline station at Aventura Mall for high speed commuter rail: **Aventura and Downtown Ft. Lauderdale Amenities without the Traffic, train stops in Miami, Ft. Lauderdale, Palm Beach and Orlando!**

The visionary owners retained world famous Celina Bentata of Arquitectura Bentata who designed a poured concrete (bomb shelter) building with state of the art HVAC systems, window lined stairwells, keyless entry and multiple open areas. Finishes are of the highest level. The Owner of the building currently occupies the 4th and 5th floors, and due to changes in the distribution of their workforce, no longer requires use of the 5th floor. These photos tell the story: The Penthouse floor of the Accesso One Building is **a compelling opportunity for any user looking for a true luxury office experience.**

Exclusively Listed By:



Ted Konigsberg, SIOR
(786) 556-8988 Cell
(305) 947-9514 Office
Ted@Infinitycommercial.net
www.realcommercialproperties.com

AREA AMENITIES



Fort Lauderdale/ Hollywood International Airport is ranked 21st in the nation in total passenger traffic and 13th in domestic origin and destination passengers. The airport system serves 29.2 million passengers, with an average of 80,000 travelers passing through its terminals on a daily basis. Major carriers include Delta, Spirit, Southwest, American, United and Emirates. There are a number of cargo, private and charter operators, too. The airport is connected by rail to the Ft. Lauderdale Convention center and Port Everglades, which is just a few minutes away. Amenities include shopping, dining, on-site auto rentals, and more. There are 12,500 badged employees on site, 139,920 total jobs with \$3.5 billion in wages and a \$13.2 billion output. Best if all, it's just a few minutes drive North along US-1 from the Accesso One Building.



Port Everglades is one of the busiest cruise ports in the world. It's also one of the most active cargo ports in the country; Over \$18 billion worth of imports and exports pass through annually. Florida's first and largest Foreign Trade Zone is situated in the heart of the Port. Annual economic activity tops \$28 billion and impacts 224,054 Florida jobs, including the 13,322 employees of companies that provide direct services to the port. In Fiscal Year 2019, Port Everglades exceeded one-million TEUs (20-foot equivalent units, the industry's standard container measurement), for the sixth consecutive year, reporting a total of 1,053,078 million TEUs and maintaining its status as Florida's number one container port and the 12th leading container port in the United States, serving more than 150 ports and 70 countries. The port's **1,200,000 Square foot** convention center and under construction 800 room hotel are huge draws for business and trade events.



Aventura Mall is the premier shopping destination in South Florida and one of the top lifestyle centers in the U.S. It draws from South Florida's most affluent communities and is a must-see for millions of domestic and international visitors every year. In addition to its iconic anchors, there is a carefully curated mix of over 300 luxury boutiques, multiple restaurants, and museum quality arts and sculptures. It even includes a water park, centered upon the 93-foot-tall Aventura Slide Tower by Carsten Höller, an amphitheater and indoor-outdoor Genius Grove. It's one of the region's most popular destinations and was ranked one of America's most visited shopping centers by Travel + Leisure magazine. It recently received TripAdvisor Travelers' Choice award for consistently earning great reviews from visitors. The mall is just North of the Accesso One Building on US-1.



Gulfstream Park has been one of the most important venues for horse racing since 1939. In addition to thoroughbred racing, there are over 800 Vegas-style slot machines and South Florida's finest poker room with over 20 live action tables. The open air mall includes a plethora of signature home stores, an international array of restaurants, world-class art galleries, a bowling alley, outdoor cafes and nightclubs, boutiques, and health and beauty services; Literally WALKING DISTANCE to Accesso One!

