



AVAILABLE FOR LEASE August 1, 2024



# AIRPORT INDUSTRIAL PARK

5601 Airport Blvd., Tampa, FL 33634

10,854 SF | BUILDING #2

## PROPERTY FEATURES

- 10,854 SF
  - ± 7,910 SF of Warehouse
  - ± 1,408 SF of Office Space
  - ± 1,536 SF of Mezzanine
- (2) Dock High Doors
- Clear Height: 18'
- Power: 3 phase / 400 amps
- Sprinklered Building
- Internet Available through Spectrum or Frontier

## LOCATION HIGHLIGHTS

- Immediate access to the Veterans Expressway and I-275
- Across from Tampa International Airport
- Located on Hillsborough Avenue

**JESSICA MIZRAHI, SIOR**  
 Executive Director  
 +1813 204 5323  
 jessica.mizrahi@cushwake.com

**LISA ROSS, SIOR**  
 Managing Director  
 +1813 424 3211  
 lisa.ross@cushwake.com

**SAM KOROLOS**  
 Senior Associate  
 +1704 989 1327  
 sam.korolos@cushwake.com

One Tampa City Center,  
 Suite 3300  
 Tampa, FL 33602  
 Main +1 813 223 6300  
 cushmanwakefield.com

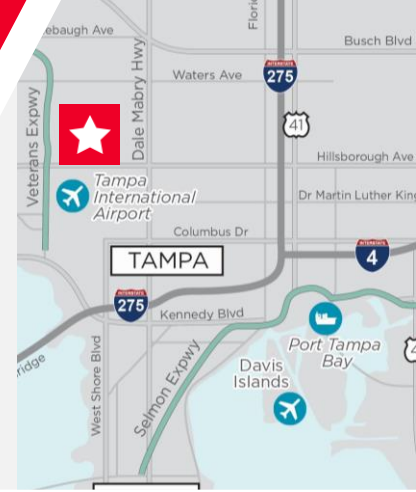


©2020Cushman & Wakefield. All rights reserved. The information contained in this communication is strictly confidential. This information has been obtained from sources believed to be reliable but has not been verified. No warranty or representation, express or implied, is made as to the condition of the property (or properties) referenced herein or as to the accuracy or completeness of the information contained herein, and same is submitted subject to errors, omissions, change of price, rental or other conditions, withdrawal without notice, and to any special listing conditions imposed by the property owner(s). Any projections, opinions or estimates are subject to uncertainty and do not signify current or future property performance.

# AIRPORT INDUSTRIAL PARK

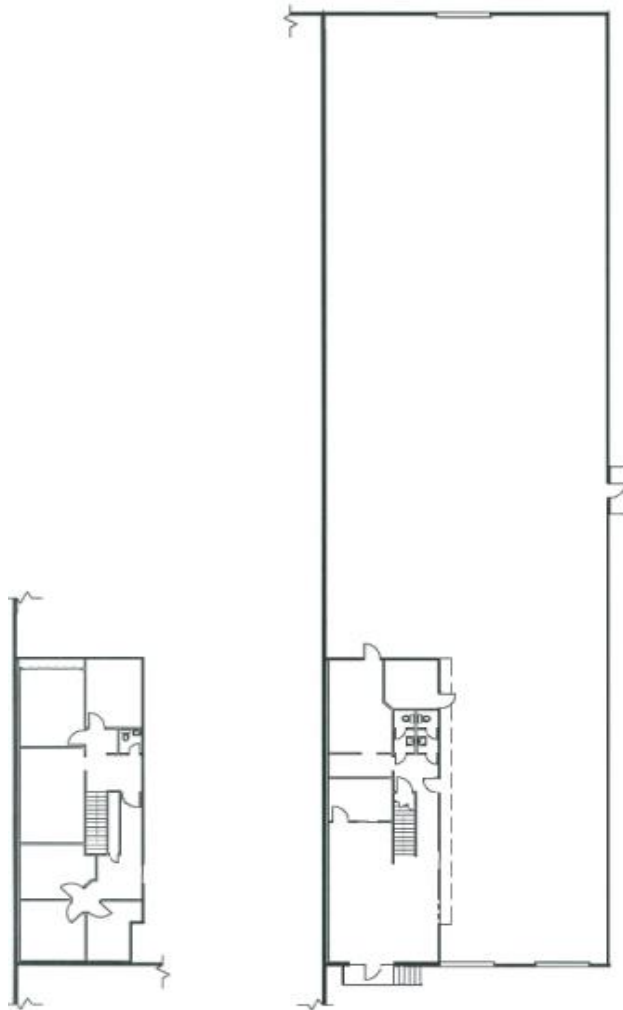
5601 Airport Blvd., Tampa, FL 33634

**10,854 SF | BUILDING #2**



## LOADING:

- (2) Dock High Doors



**JESSICA MIZRAHI, SIOR**

Executive Director  
+1 813 204 5323

[jessica.mizrahi@cushwake.com](mailto:jessica.mizrahi@cushwake.com)

**LISA ROSS, SIOR**

Managing Director  
+1 813 424 3211

[lisa.ross@cushwake.com](mailto:lisa.ross@cushwake.com)

**SAM KOROLOS**

Senior Associate  
+1 704 989 1327

[sam.korolos@cushwake.com](mailto:sam.korolos@cushwake.com)

One Tampa City Center,  
Suite 3300  
Tampa, FL 33602  
Main +1 813 223 6300  
[cushmanwakefield.com](http://cushmanwakefield.com)