

# 5806

**N 53RD STREET**

**HANNA DISTRIBUTION  
CENTER**

**FOR LEASE MAY 2024  
130,330 SF**



## **CONTACT**

JESSICA MIZRAHI, SIOR  
Executive Director  
+1 813 204 5323  
jessica.mizrahi@cushwake.com

SAM KOROLOS  
Senior Associate  
+1 704 989 1327  
sam.korolos@cushwake.com



# // PROPERTY FEATURES



**27-32' CLEAR HEIGHT**



**± 5,500 SF OFFICE SPACE**



**15 LOADING DOCKS**



**OUTDOOR STORAGE**



**WET PIPE SPRINKLERS**



**POWER | 3 METERS**

- 3 PHASE, 480 V, 400 AMPS
- 3 PHASE, 240 V, 400 AMPS
- 271 V, 400 AMPS

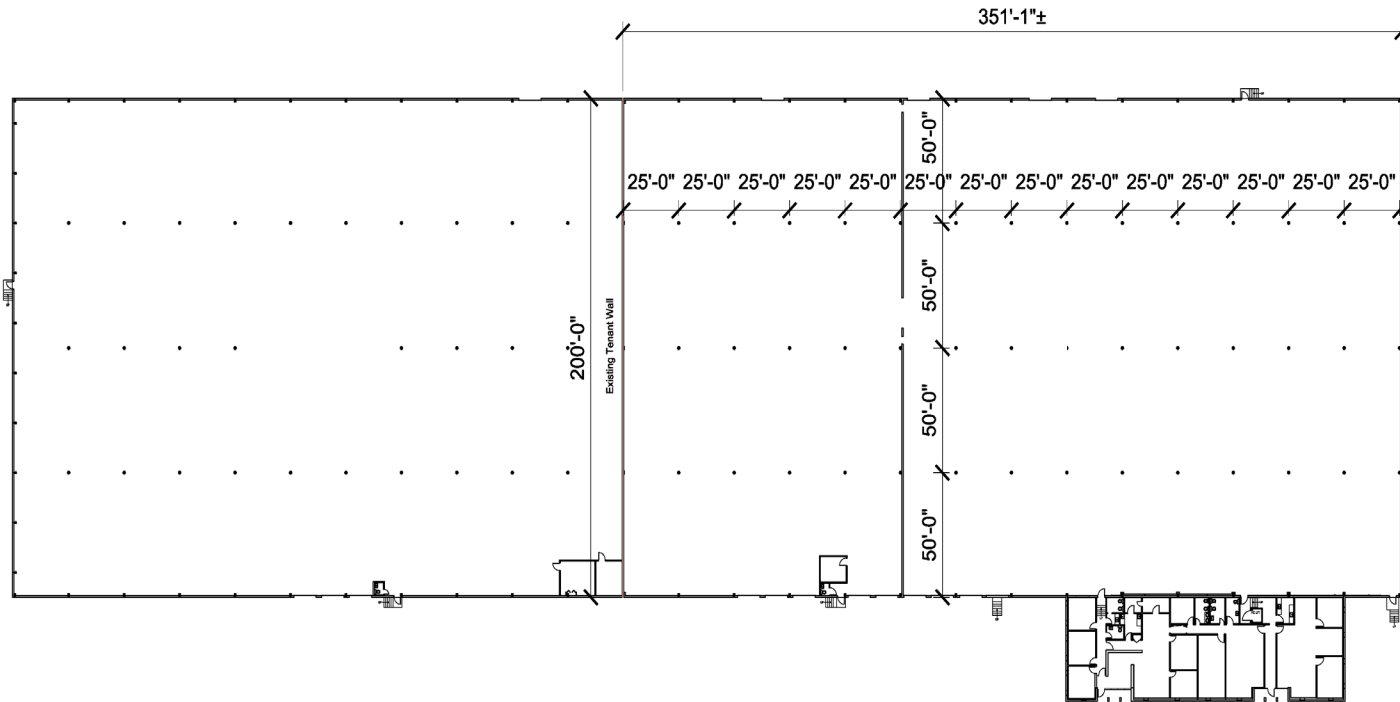


**AVAILABLE MAY 1, 2024**

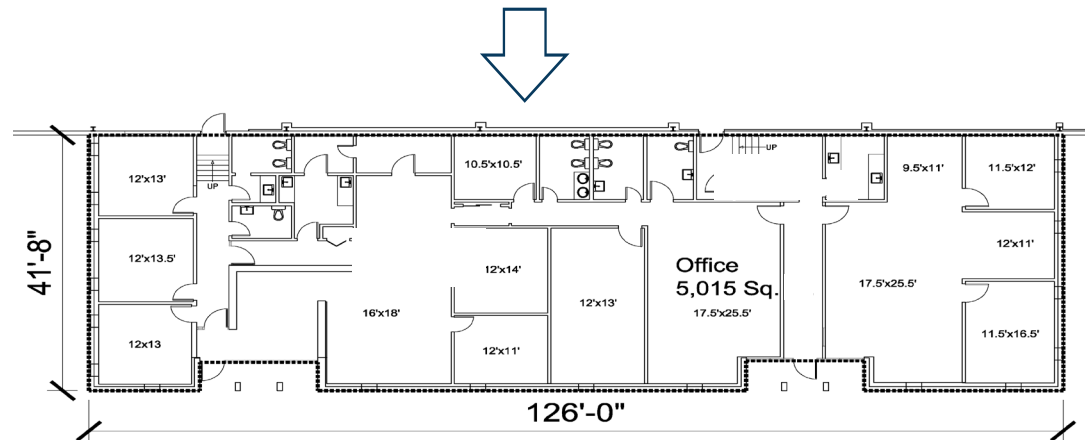


// **HANNA DISTRIBUTION CENTER**  
5806 N 53rd Street, Tampa, FL

# // FLOOR PLANS

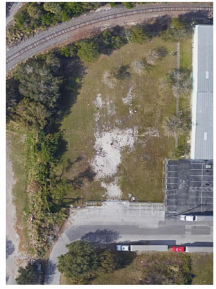


	SQUARE FEET	OFFICE SF	LOADING DOORS
<b>TOTAL</b>	<b>130,330 SF</b>	<b>± 5,500 SF</b>	<b>15</b>



# // AERIAL

Fenced Outdoor  
Storage Area



**FOR MORE INFORMATION,  
PLEASE CONTACT:**

JESSICA MIZRAHI, SIOR  
Executive Director  
+1 813 204 5323

[jessica.mizrahi@cushwake.com](mailto:jessica.mizrahi@cushwake.com)

SAM KOROLOS  
Senior Associate  
+1 704 989 1327

[sam.korolos@cushwake.com](mailto:sam.korolos@cushwake.com)

MELISSA WATTERWORTH  
Licensed Brokerage Specialist  
+1 813 599 2190

[melissa.watterworth@cushwake.com](mailto:melissa.watterworth@cushwake.com)

