

FOR LEASE

Owned and Operated by



Eastgate Distribution Center

9838 Currie Davis Drive, Tampa, FL

4,900 SF

A photograph showing a large white sign for the Eastgate Distribution Center. The sign is set against a backdrop of a large industrial building and several palm trees. The sign text includes the name of the center, the company name 'COBALT INDUSTRIAL REIT', and the address '9820-9876 Currie Davis Dr.'

Eastgate Distribution Center

COBALT INDUSTRIAL REIT

9820-9876 Currie Davis Dr.

LEASING INFO & CONTACT

Sam Korolos

(704) 989-1327 / sam.korolos@cushwake.com

Jessica Mizrahi, SIOR

(813) 204-5323 / jessica.mizrahi@cushwake.com

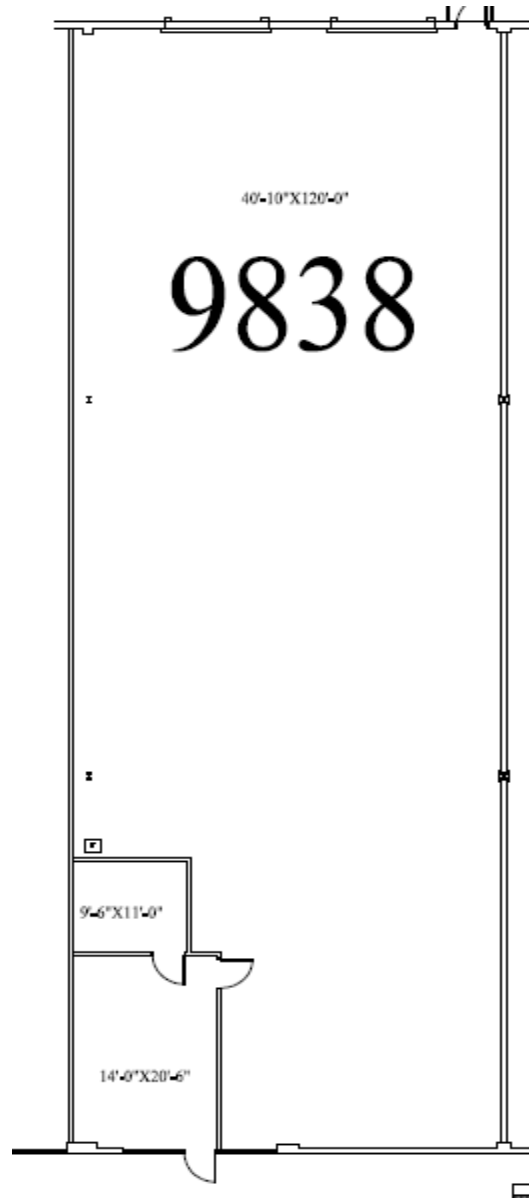
Lisa Ross, SIOR

(813) 424-3211 / lisa.ross@cushwake.com

Trey Carswell, SIOR

(813) 230-6131 / trey.carswell@cushwake.com

This is not an offer or acceptance of an offer to lease space. A lease will only be offered or made in a written agreement signed by landlord. No representation or warranty of any kind is made by landlord unless set forth in a written definitive lease executed by the landlord.



PROPERTY HIGHLIGHTS

TOTAL SF 4,900 SF

OFFICE SF 393 SF

SPRINKLERS Fully sprinklered with wet pipe system

POWER TBD

OCCUPANCY April 1, 2024

CLEAR HEIGHT 20'

LOADING Two (2) Dock-High Doors

AREA HIGHLIGHTS

Centrally located in the East Tampa Submarket on 50th St

Immediate access to I-4, I-75, The Lee Roy Selmon Expressway, and Adamo Drive (SR 60)