



**Bishop Beale Duncan**  
COMMERCIAL REAL ESTATE

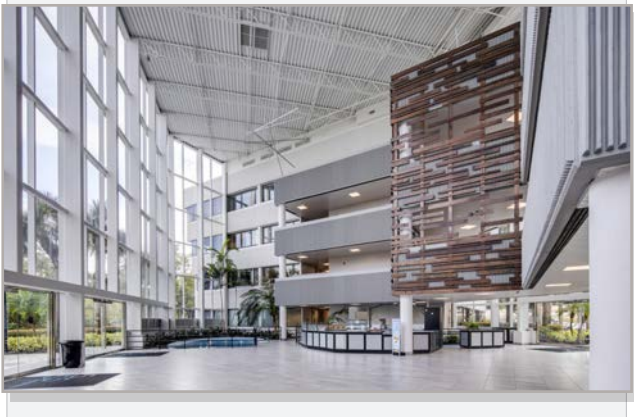
555 Winderley Place, Suite 100  
Maitland, FL 32751

## PLUG-N-PLAY OFFICE SPACE



## SUB-LEASE

- + Lease Rate: \$23.18/SF Full Service
- + Available: 1,000 SF - 3,000 SF
- + Lease Term Thru 9/30/2025
- + Move-in Ready & Available Now



## Space Highlights

- Contemporary Office Suite in Maitland Center
- Floor-to-Ceiling Glass Lined Lobby
- Custom Interior Build-out with Large Offices, Creative Meeting Areas, Spacious Cubicles and Equipped Kitchen
- Newly renovated building lobby with self serve snack/vending area
- Convenient access to Interstate-4 and Maitland Blvd.

## 5-Mile Demographic Snapshot



197K  
ESTIMATED  
EMPLOYEES



\$117K  
AVERAGE  
HOUSEHOLD  
INCOME



255K  
ESTIMATED  
POPULATION

### BUFFY GILLETTE

Broker Associate  
(407) 734.7205  
Buffy@BBDRE.com



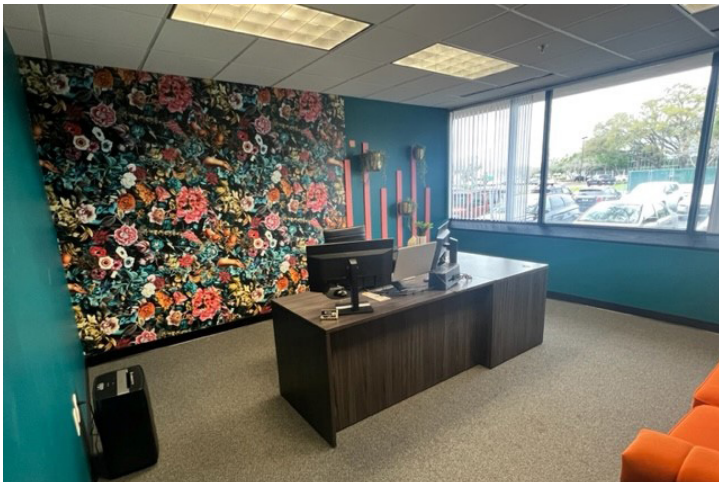
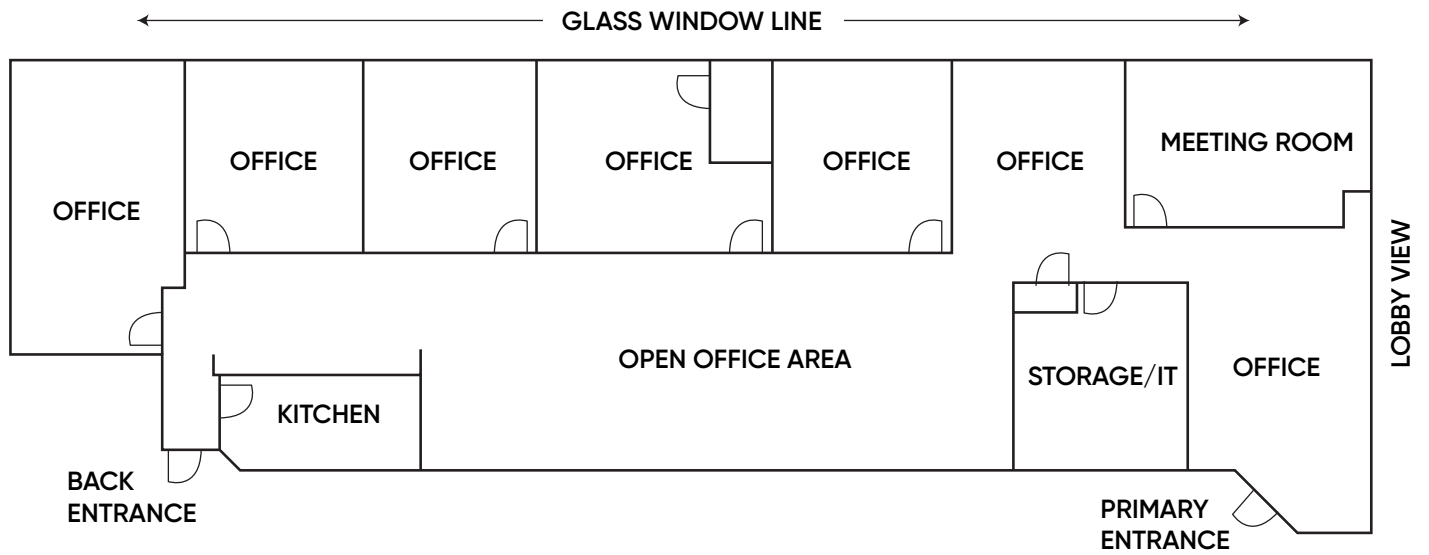
### BISHOP BEALE DUNCAN

250 N. Orange Ave., Ste. 1500  
Orlando, FL 32801 + (407) 426.7702

[www.BBDRE.com](http://www.BBDRE.com)



# Floor Plan & Interiors





# Location Details



**3 Minutes**  
to Interstate 4 /  
Interstate 4 Express Lanes

**11 Minutes**  
to Altamonte Springs

**11 Minutes**  
to Winter Park Village

**12 Minutes**  
to Downtown Orlando

**20 Minutes**  
to Lake Mary

**26 Minutes**  
to Orlando Intl. Airport

## Maitland Center

Maitland Center is Orlando's largest office market outside of Downtown Orlando and tourist areas. It contains over 8 million square feet of office space, covering nearly 400 acres with over 24,000 daytime employees.

It sits alongside Maitland Boulevard / State Road 414 and is easily accessible from Interstate-4. It is central to neighboring communities of Maitland, Altamonte Springs, Winter Park and Apopka.

