

451/COMMERCE PARK

APOPKA, FL

New Class-A Industrial Park

550-650 MARSHALL LAKE ROAD

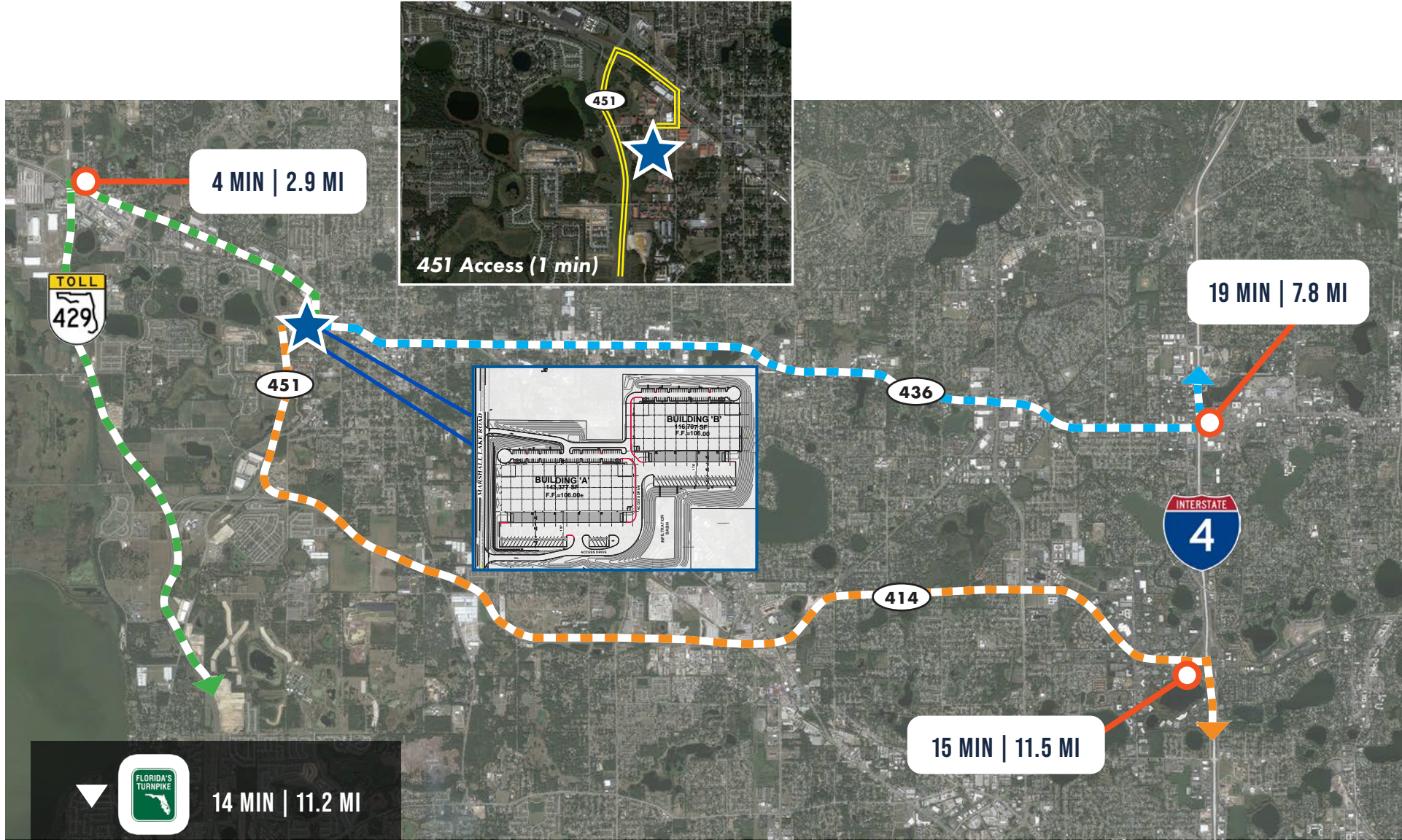
▶ UP TO 143,377 SF AVAILABLE FOR LEASE OR SALE

APOPKA, FL

451 COMMERCE PARK

±34,500 - 143,377 RSF AVAILABLE FOR LEASE

ACCESS POINTS



FOR MORE INFORMATION, PLEASE CONTACT:

JUSTIN RUBY, SIOR, CCIM | 407.540.7727

Justin.Ruby@foundrycommercial.com
Licensed Real Estate Broker

JOEY WOODMAN | 407.748.5888

Joey.Woodman@foundrycommercial.com
Licensed Real Estate Broker

TRAVIS HAMMOND | 407.401.1707

Travis.Hammond@foundrycommercial.com
Licensed Real Estate Broker



Although the information contained herein was provided by sources believed to be reliable, Foundry Commercial makes no representation, expressed or implied, as to its accuracy and said information is subject to errors, omissions or changes.

foundrycommercial.com

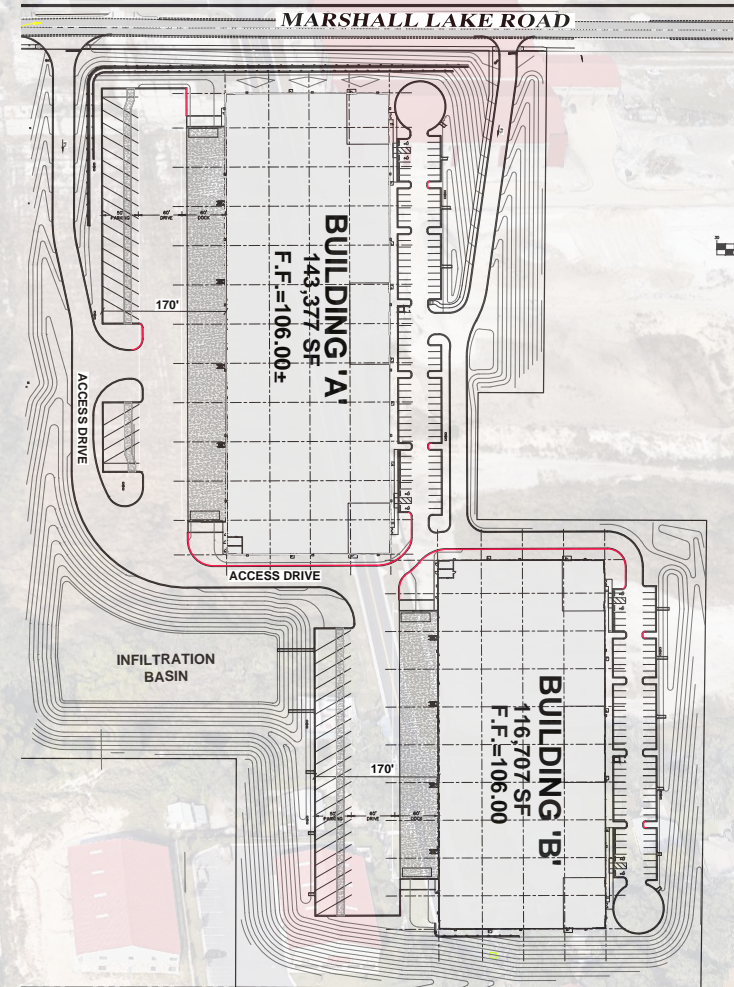
APOPKA, FL

451 COMMERCE PARK

±34,500 - 143,377 RSF AVAILABLE FOR LEASE

BUILDING SPECIFICATIONS

| | BUILDING A | BUILDING B |
|--------------------|---------------------------|---------------------------|
| TOTAL SF: | 34,500 - 143,377 SF | 58,107 SF |
| AVAILABLE: | IMMEDIATELY | IMMEDIATELY |
| BUILDING TYPE: | REAR LOAD | REAR LOAD |
| CLEAR: | 32' | 32' |
| PARKING: | 95 | 77 |
| TRAILER PARKING: | 19 | 21 |
| CONSTRUCTION TYPE: | TILT-WALL CONCRETE | TILT-WALL CONCRETE |
| ROOF TYPE: | 45 MIL TPO | 45 MIL TPO |
| DOCK HIGH DOORS: | 36 | 24 |
| DRIVE IN DOORS | 2 | 2 |
| BUILDING DEPTH: | 226' BUILDING DEPTH | 230' BUILDING DEPTH |
| TRUCK COURT DEPTH: | 170' TRUCK COURT | 170' TRUCK COURT |
| COLUMN SPACING | 55' X 54' W 60' SPEED BAY | 56' X 52' W 60' SPEED BAY |



FOR MORE INFORMATION, PLEASE CONTACT:

JUSTIN RUBY, SIOR, CCIM | 407.540.7727

Justin.Ruby@foundrycommercial.com
Licensed Real Estate Broker

JOEY WOODMAN | 407.748.5888

Joey.Woodman@foundrycommercial.com
Licensed Real Estate Broker

TRAVIS HAMMOND | 407.401.1707

Travis.Hammond@foundrycommercial.com
Licensed Real Estate Broker



Although the information contained herein was provided by sources believed to be reliable, Foundry Commercial makes no representation, expressed or implied, as to its accuracy and said information is subject to errors, omissions or changes.

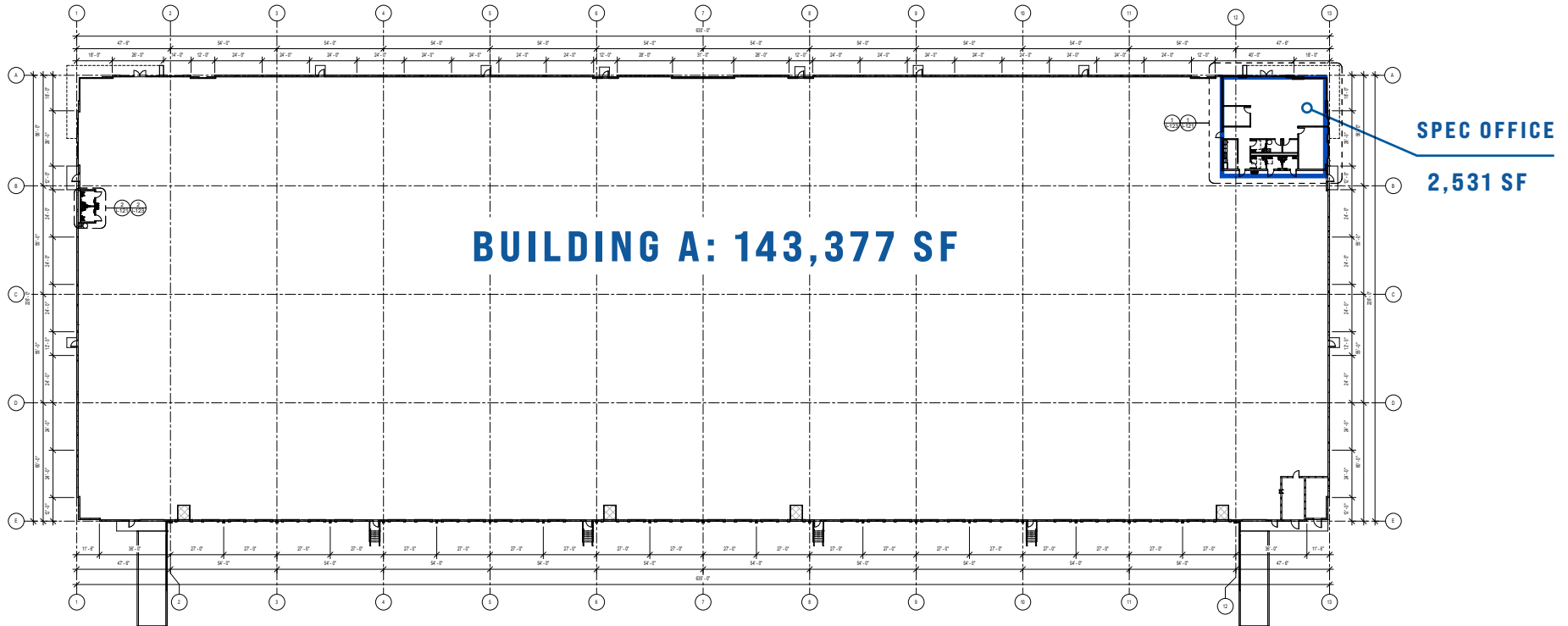
foundrycommercial.com

APOPKA, FL

451 COMMERCE PARK

±34,500 - 143,377 RSF AVAILABLE FOR LEASE

BUILDING A FLOOR PLAN



FOR MORE INFORMATION, PLEASE CONTACT:

JUSTIN RUBY, SIOR, CCIM | 407.540.7727

Justin.Ruby@foundrycommercial.com
Licensed Real Estate Broker

JOEY WOODMAN | 407.748.5888

Joey.Woodman@foundrycommercial.com
Licensed Real Estate Broker

TRAVIS HAMMOND | 407.401.1707

Travis.Hammond@foundrycommercial.com
Licensed Real Estate Broker



Although the information contained herein was provided by sources believed to be reliable, Foundry Commercial makes no representation, expressed or implied, as to its accuracy and said information is subject to errors, omissions or changes.

foundrycommercial.com

APOPKA, FL

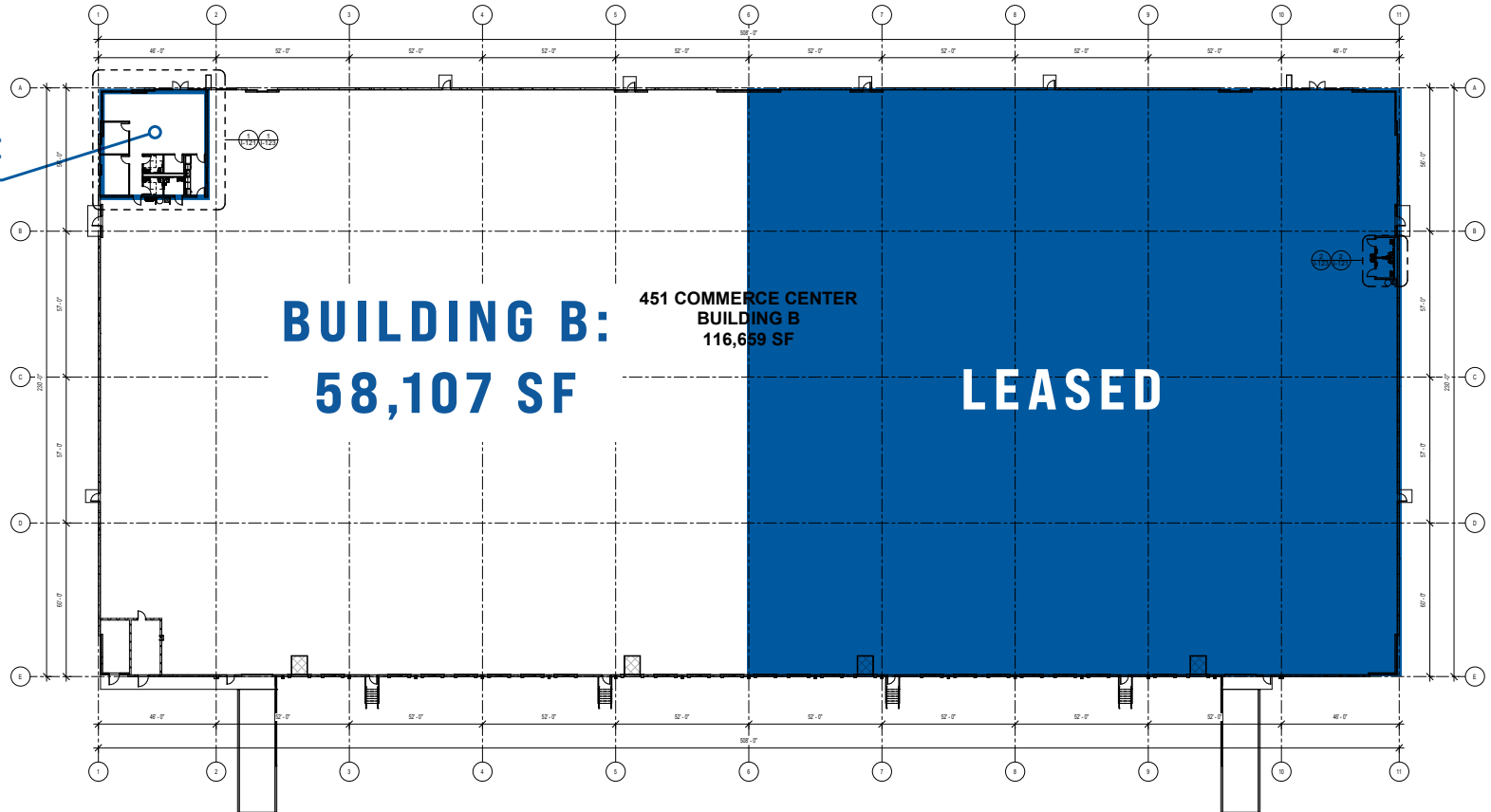
451 COMMERCE PARK

±34,500 - 143,377 RSF AVAILABLE FOR LEASE

BUILDING B FLOOR PLAN

SPEC OFFICE

1,731 SF



FOR MORE INFORMATION, PLEASE CONTACT:

JUSTIN RUBY, SIOR, CCIM | 407.540.7727

Justin.Ruby@foundrycommercial.com
Licensed Real Estate Broker

JOEY WOODMAN | 407.748.5888

Joey.Woodman@foundrycommercial.com
Licensed Real Estate Broker

TRAVIS HAMMOND | 407.401.1707

Travis.Hammond@foundrycommercial.com
Licensed Real Estate Broker



Although the information contained herein was provided by sources believed to be reliable, Foundry Commercial makes no representation, expressed or implied, as to its accuracy and said information is subject to errors, omissions or changes.

foundrycommercial.com

APOPKA, FL

451 COMMERCE PARK

±34,500 - 143,377 RSF AVAILABLE FOR LEASE

PROGRESS PHOTOS



FOR MORE INFORMATION, PLEASE CONTACT:

JUSTIN RUBY, SIOR, CCIM | 407.540.7727

Justin.Ruby@foundrycommercial.com
Licensed Real Estate Broker

JOEY WOODMAN | 407.748.5888

Joey.Woodman@foundrycommercial.com
Licensed Real Estate Broker

TRAVIS HAMMOND | 407.401.1707

Travis.Hammond@foundrycommercial.com
Licensed Real Estate Broker



Although the information contained herein was provided by sources believed to be reliable, Foundry Commercial makes no representation, expressed or implied, as to its accuracy and said information is subject to errors, omissions or changes.

foundrycommercial.com