

# LEASE

## BEACHLAND FINANCIAL CENTER

660 Beachland Blvd Vero Beach, FL 32963



### PROPERTY DESCRIPTION

The Kite Team is pleased to offer for lease a stunning professional office suite available for immediate occupancy. An exclusive opportunity to lease a Class A executive suite in an iconic, well-known building. The built-out professional office suite comprises modern private offices, large open workspaces, natural lighting, and high ceilings.

### PROPERTY HIGHLIGHTS

- An exclusive opportunity to lease a move-in-ready professional office suite
- Class A Professional office suites, modern build-out, natural lighting
- Ample parking, easily accessible, built-out class a professional office space
- Located on the SE corner of Hwy A1A and Beachland Blvd in 32963 zip code
- Vero Beach offers a live/work/play lifestyle with several family-friendly communities

### OFFERING SUMMARY

Lease Rate:	\$25.00 SF/yr (NNN)
Available SF:	4,532 SF
Building Size:	32,056 SF
Zoning:	C-1A
APN:	32403200006014000013.0

### DEMOGRAPHICS

	1 MILE	2 MILES	3 MILES
Total Households	2,084	6,453	10,388
Total Population	2,366	8,166	14,748

**Kollin Kite**  
772 633 5640  
kollin@kitepropertiesllc.com

**Keith D. Kite**  
772 633 0292  
keith@kitepropertiesllc.com

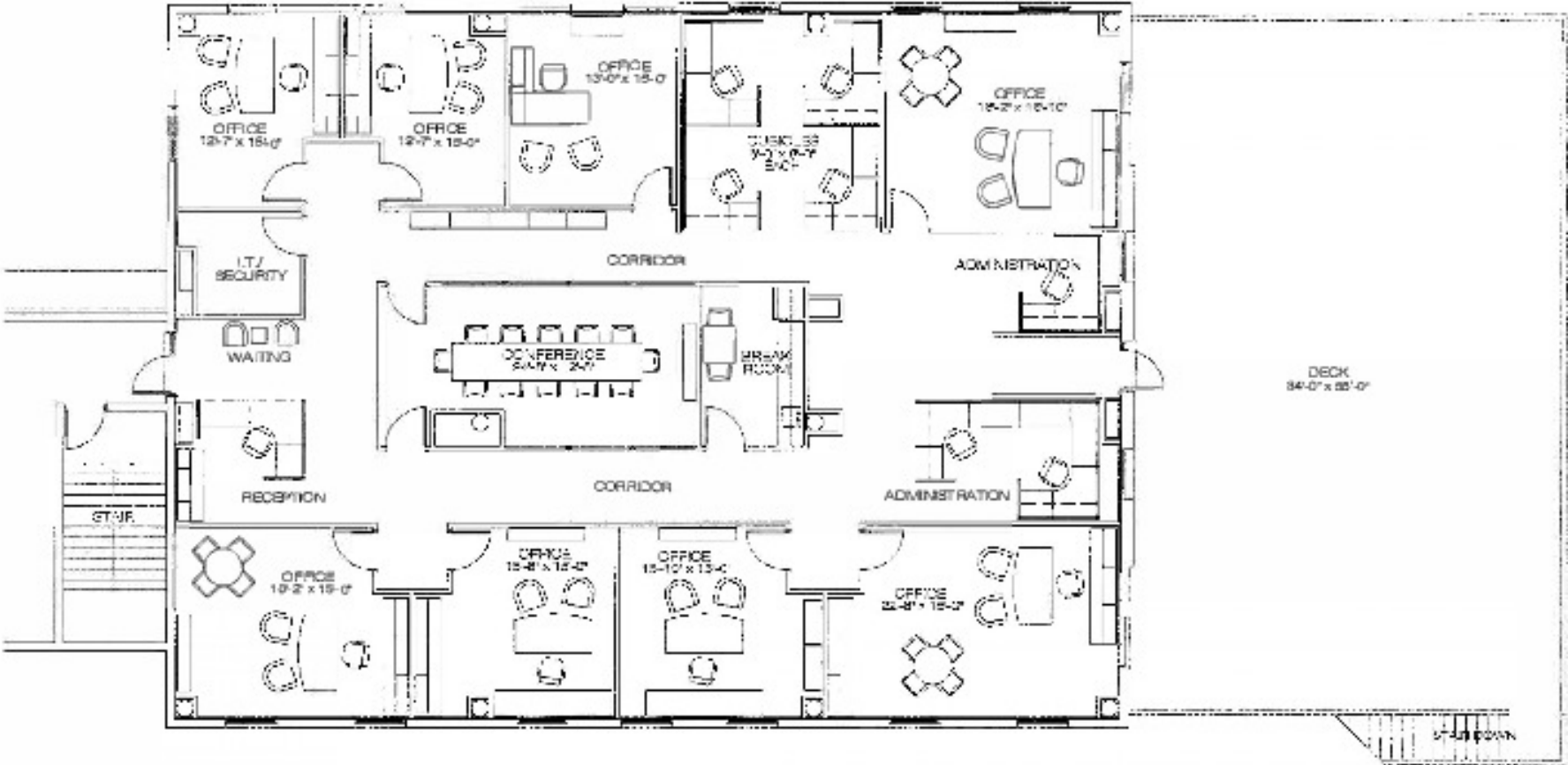


**COLDWELL BANKER**  
**COMMERCIAL**  
PARADISE

# LEASE

## BEACHLAND FINANCIAL CENTER

660 Beachland Blvd Vero Beach, FL 32963



**Kollin Kite**  
772 633 5640  
kollin@kitepropertiesllc.com

**Keith D. Kite**  
772 633 0292  
keith@kitepropertiesllc.com



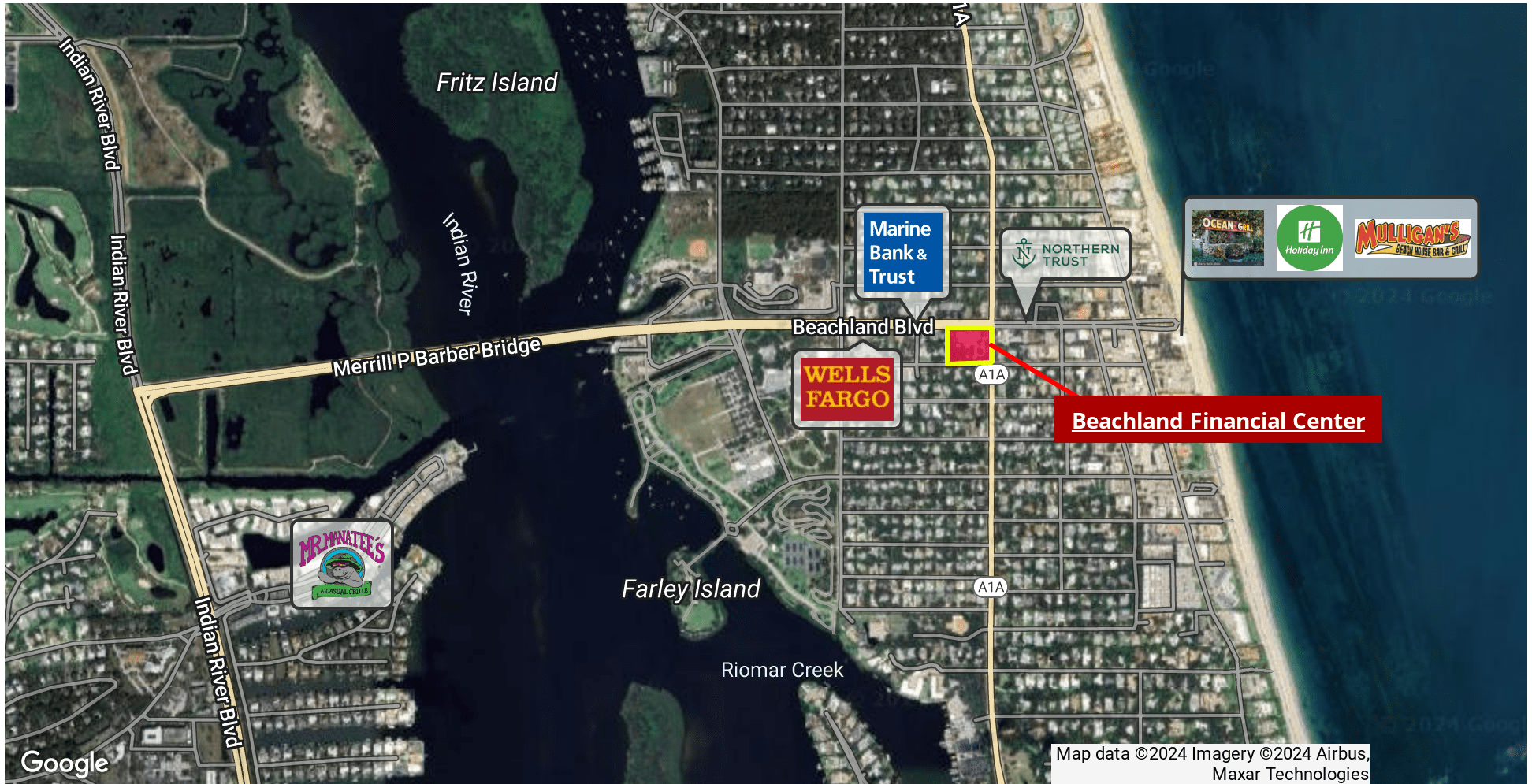
©2022 Coldwell Banker Real Estate LLC, dba Coldwell Banker Commercial Paradise. All rights reserved. Coldwell Banker Commercial® and the Coldwell Banker Commercial logo are registered service marks owned by Coldwell Banker Real Estate LLC. Coldwell Banker Real Estate LLC, dba Coldwell Banker Commercial Affiliates fully supports the principles of the Fair Housing Act and the Equal Opportunity Act. Each office is independently owned and operated. The information provided is deemed reliable, but it is not guaranteed to be accurate or complete, and it should not be relied upon as such. This information should be independently verified before any person enters into a transaction based upon it.



# LEASE

## BEACHLAND FINANCIAL CENTER

660 Beachland Blvd Vero Beach, FL 32963



**Kollin Kite**  
772 633 5640

kollin@kitepropertiesllc.com

**Keith D. Kite**  
772 633 0292

keith@kitepropertiesllc.com



**COLDWELL BANKER  
COMMERCIAL**  
PARADISE



# LEASE

## BEACHLAND FINANCIAL CENTER

660 Beachland Blvd Vero Beach, FL 32963



**Kollin Kite**  
772 633 5640  
kollin@kitepropertiesllc.com

**Keith D. Kite**  
772 633 0292  
keith@kitepropertiesllc.com



**COLDWELL BANKER**  
**COMMERCIAL**  
PARADISE