

For Sublease

Winter Park Commerce Center

6,400 SF | Contact Broker

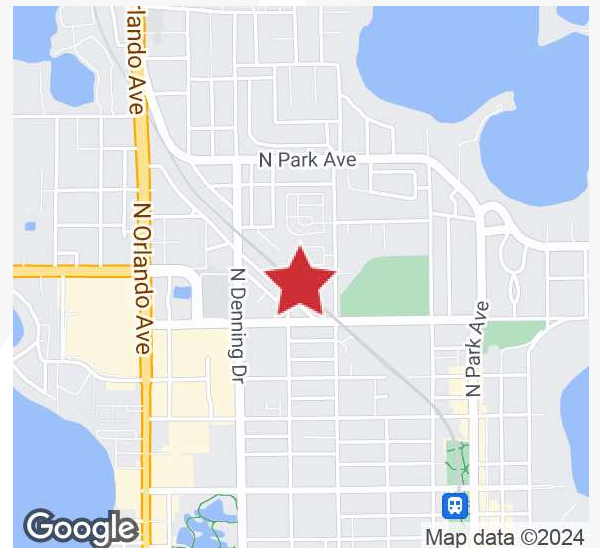


957 North Pennsylvania Avenue

Winter Park, Florida 32789

Property Highlights

- Sublease space - through 11/30/25 - 6,400± SF
- Includes 1st floor office/showroom and 2nd floor mezzanine office
- Great Winter Park location - minutes from Park Avenue
- Zoning: I-1, Light Industrial
- Ample parking
- CAM includes water, sewer, waste removal, site lighting and yard maintenance
- On-site management
- Convenient access to US Hwy 17-92, I-4, Lee Road and Park Avenue
- Less than a mile to both Downtown Winter Park and Winter Park Village
- 3 minutes to Lee Rd and US Hwy 17-92 intersection



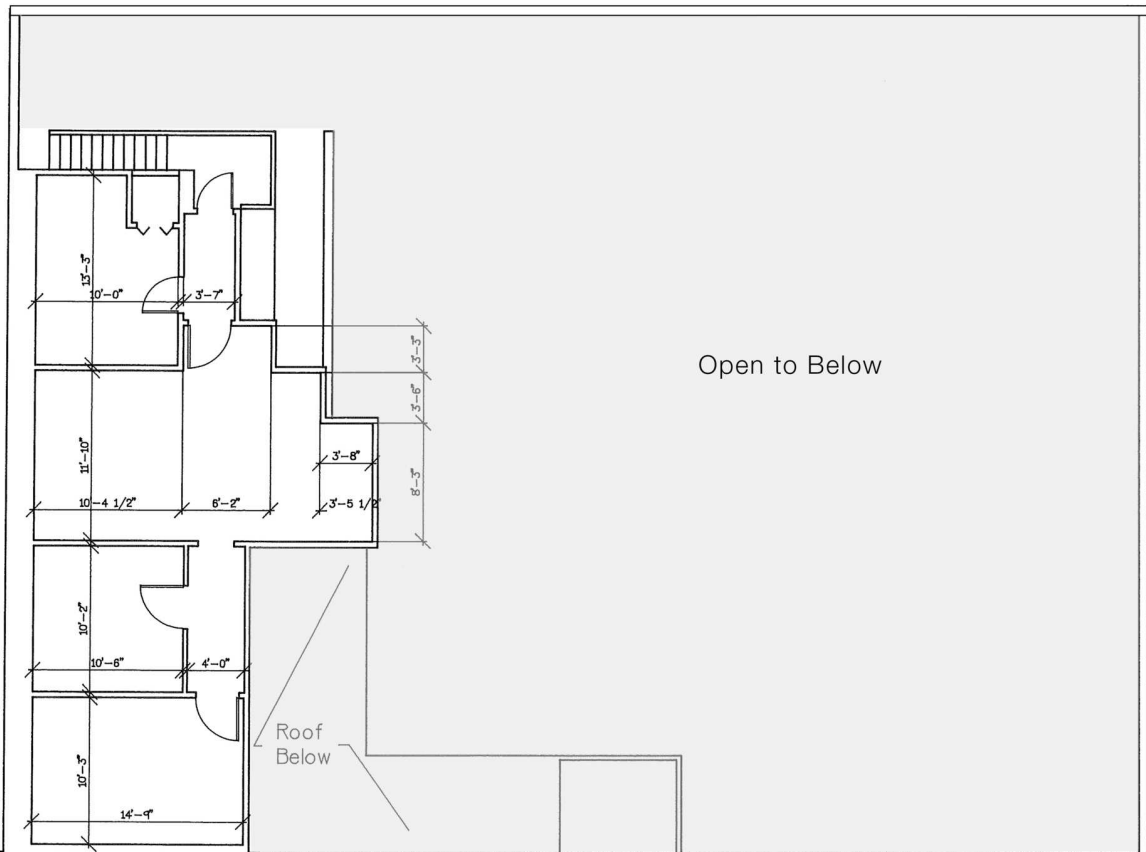
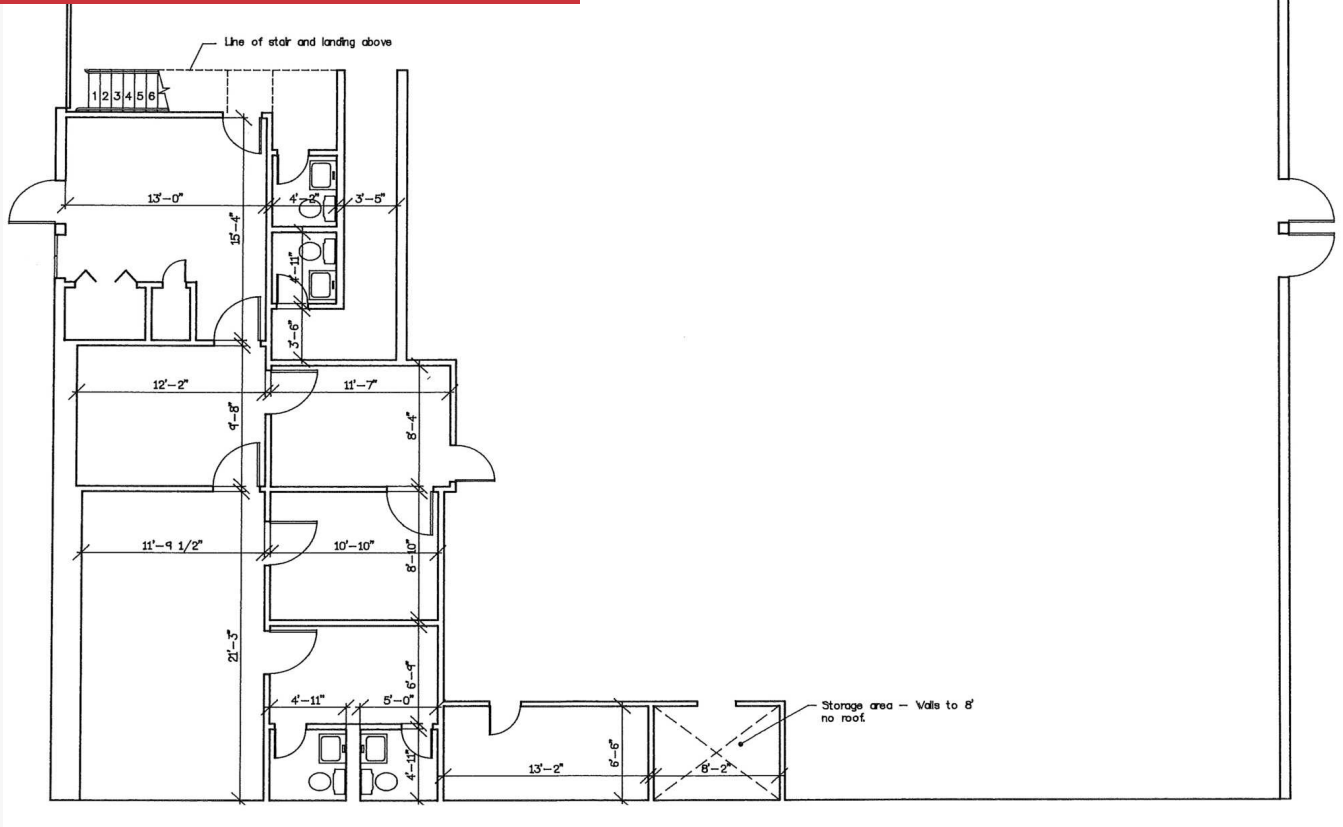
Lease Rate: Contact Broker

For more information

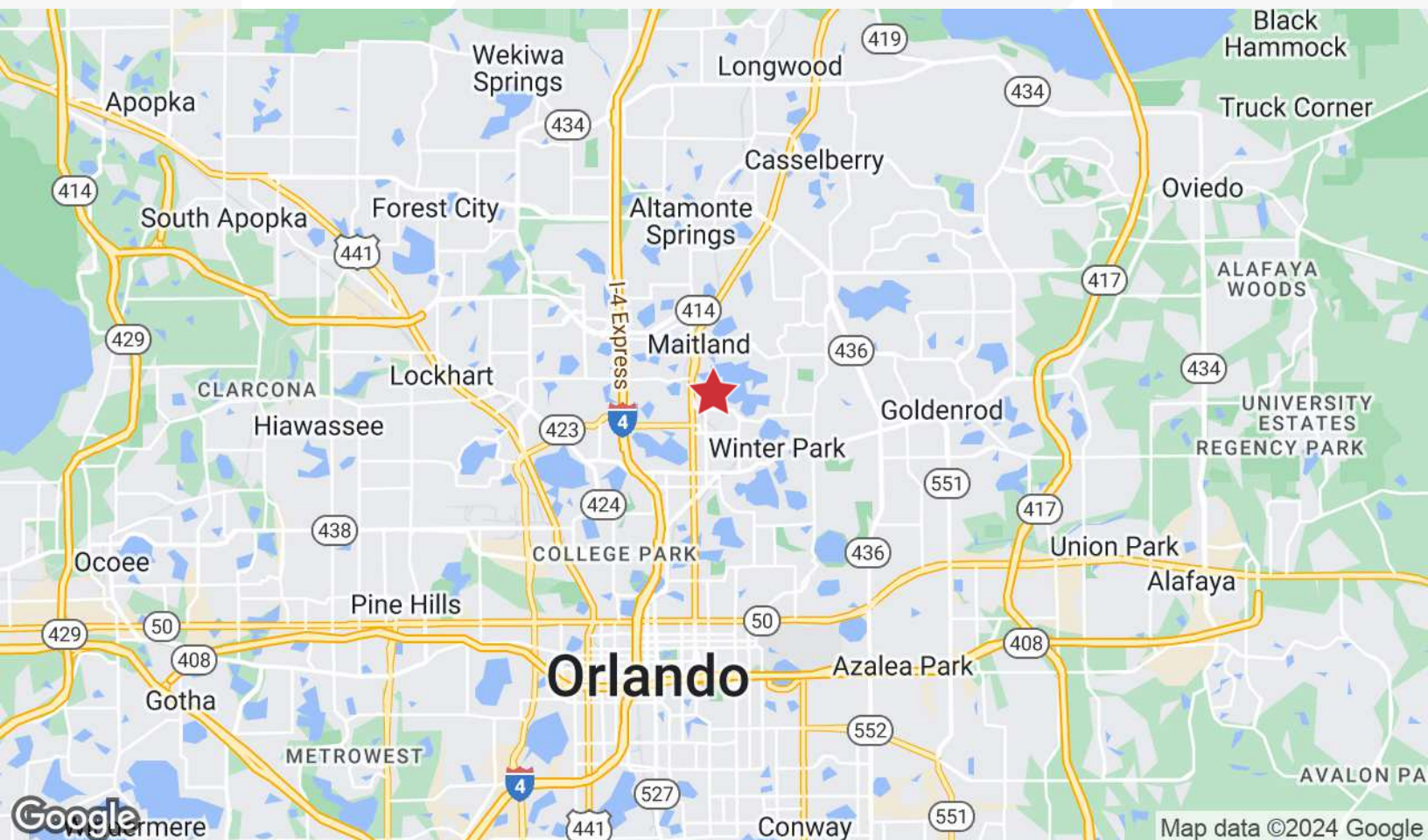
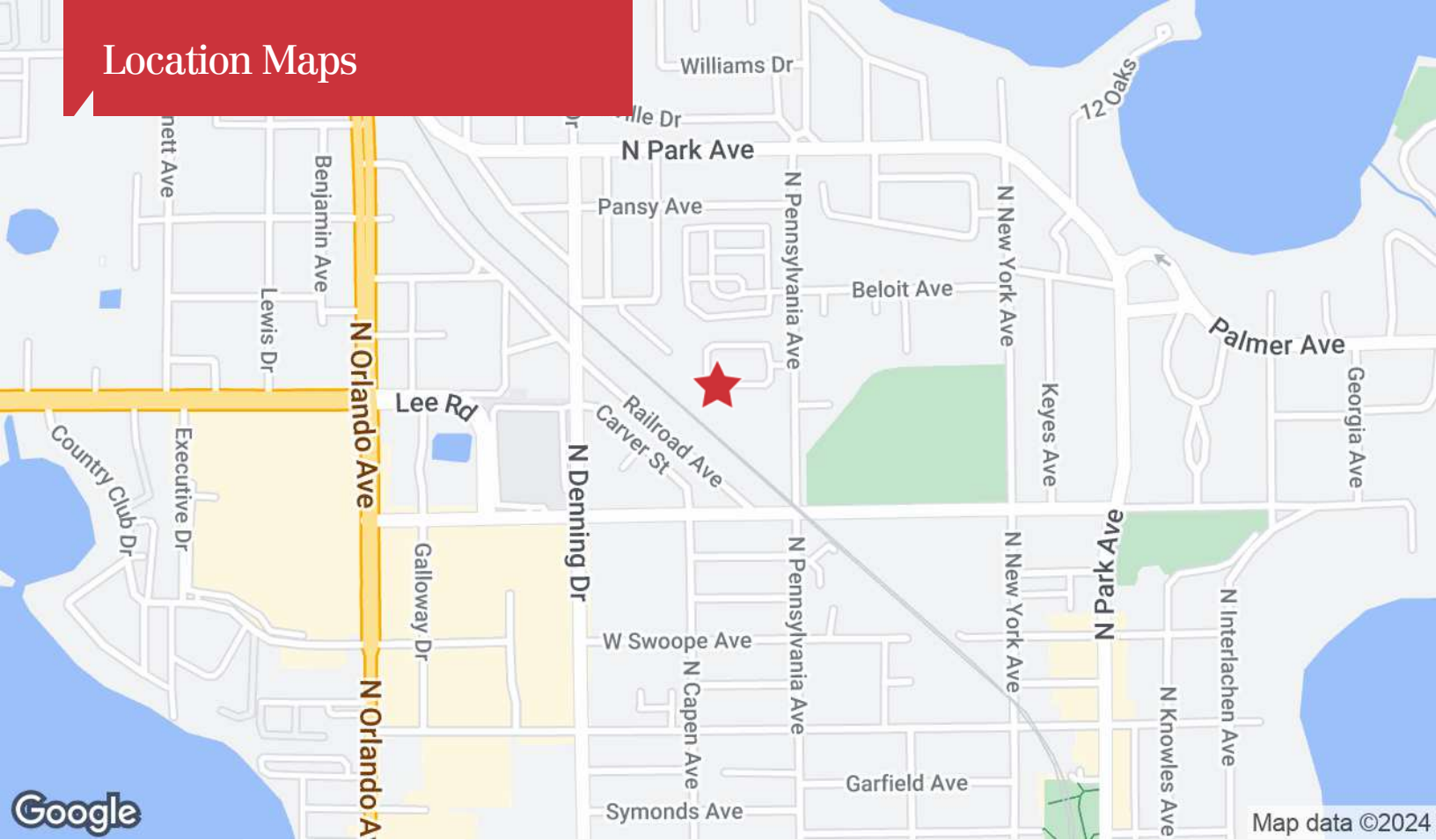
Monika Chappell

O: 407 949 0717
mchappell@realvest.com

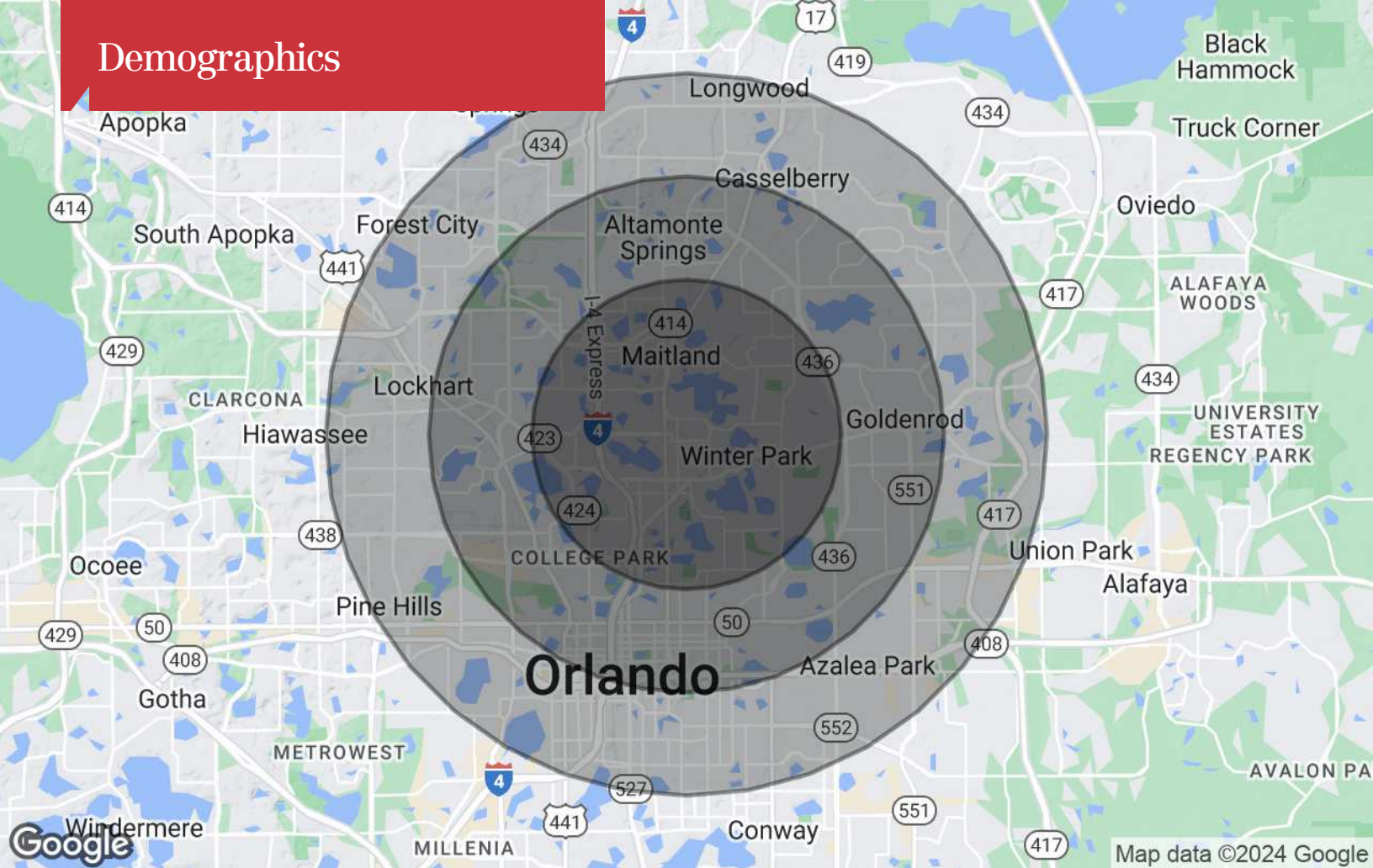
Floor Plans - 1st & 2nd (Mezzanine) Floors



Location Maps



Demographics



Population

	3 Miles	5 Miles	7 Miles
TOTAL POPULATION	85,552	273,075	531,943
MEDIAN AGE	43	41	41
MEDIAN AGE (MALE)	42	40	39
MEDIAN AGE (FEMALE)	44	42	42

Households & Income

	3 Miles	5 Miles	7 Miles
TOTAL HOUSEHOLDS	38,026	122,804	221,726
# OF PERSONS PER HH	2.2	2.2	2.4
AVERAGE HH INCOME	\$139,400	\$108,010	\$97,260
AVERAGE HOUSE VALUE	\$638,619	\$489,902	\$420,946

* Demographic data derived from 2020 ACS - US Census