



11 10th Avenue South | Hopkins, MN 55343

OWNER/USER OPPORTUNITY - OFFICE/RETAIL PROPERTY FOR SALE

For Sale:

- 5,414 sf (1,413 sf available with a cathedral ceiling and hardwood floors)
- 2024 Tax: \$24,979.48 (\$4.61 psf)
- Sale Price: \$1,300,000
- Lot Size: .14 acres (6,098 sf)

For Lease:

- Suite C: 813 sf (available 9/1/24)
- Upper-level office space includes kitchenette and restroom
- Lease Rate: \$19.00 psf Gross

Highlights and Features:

- Potential for an Owner/User to occupy 1,413 SF on the main floor
- Updated and well maintained
- Unique architectural details
- Year Built: 1941
- In the heart of Hopkins, 1 block off Main Street
- Floors: 3
- Parking: Free city lot adjacent to the building
- Zoning: B-2
- SWLRT has three planned stations in Hopkins
- The downtown Hopkins station will be connected to Mainstreet by 8th Avenue
- Ovation Hopkins, a mixed-use development, will be opening in the fall of 2024
- Current tenants: Hears To U Audiology, Twist Sales, and Novo Chiropractic
- Area tenants: Brasa, K'kinaco-Nikkei & Pisco Bar, Hoagie's, Mainstreet Bar & Grill, Chipotle, The Vine Room, Cam Ranh Bay, LTD Brewing Co, A to Z Creamery, Pub 819, Nacho's Mexican Grill, Wild Boar Bar & Grill, Thirty Bales, Bear Cave Brewing, Nautical Bowls, Cream and Amber, Chicky Choco Pop and more



Christianson & Company
COMMERCIAL REAL ESTATE SERVICES
www.SpaceAvailableMN.com



NANCY FLICEK
952.992.0093

nancy@christiansonandco.com

MARILYN FRITZE
612.804.4364

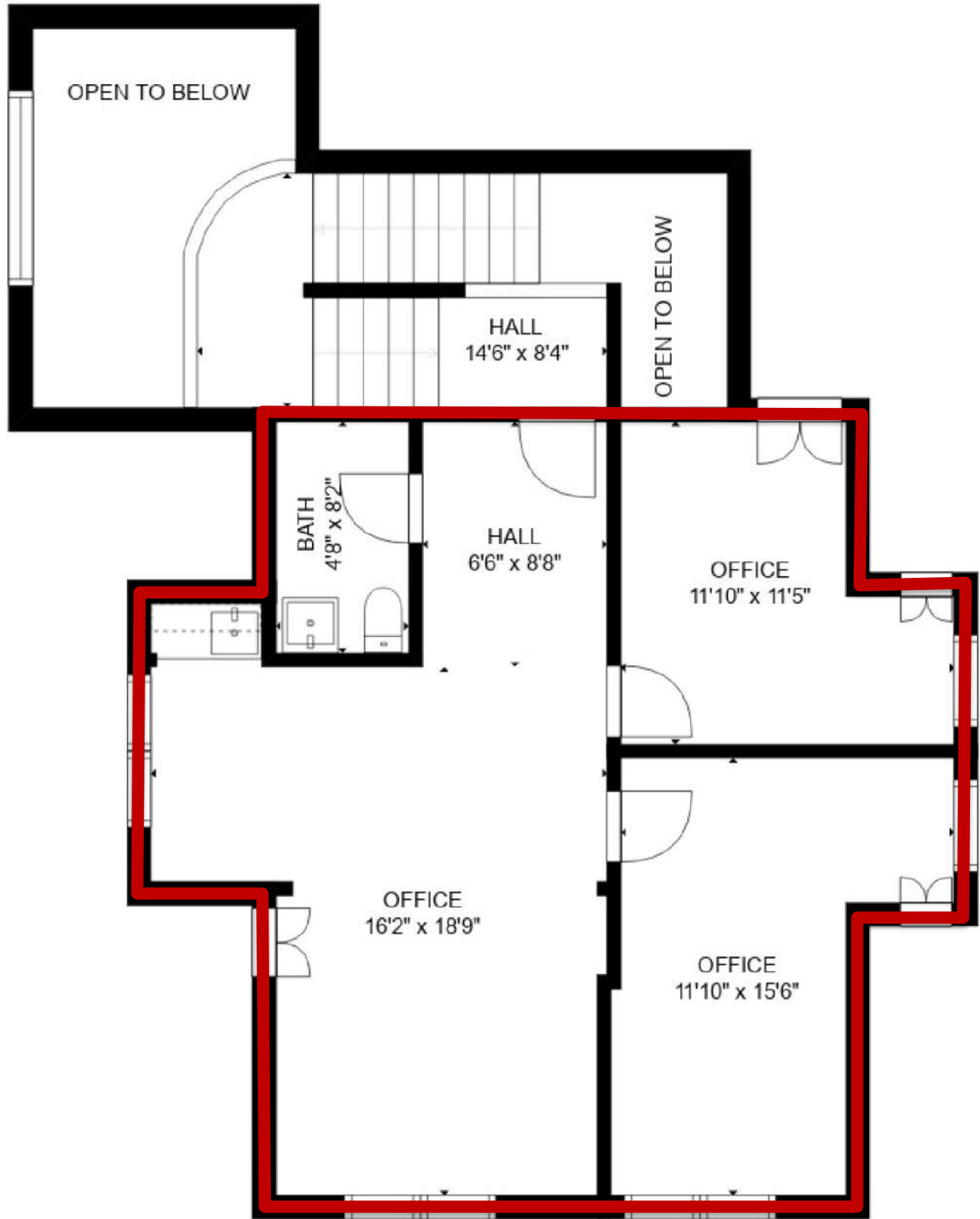
marilyn@christiansonandco.com

This information is accurate as of the date of printing and is subject to change without notice. All information is deemed accurate, but cannot be guaranteed.

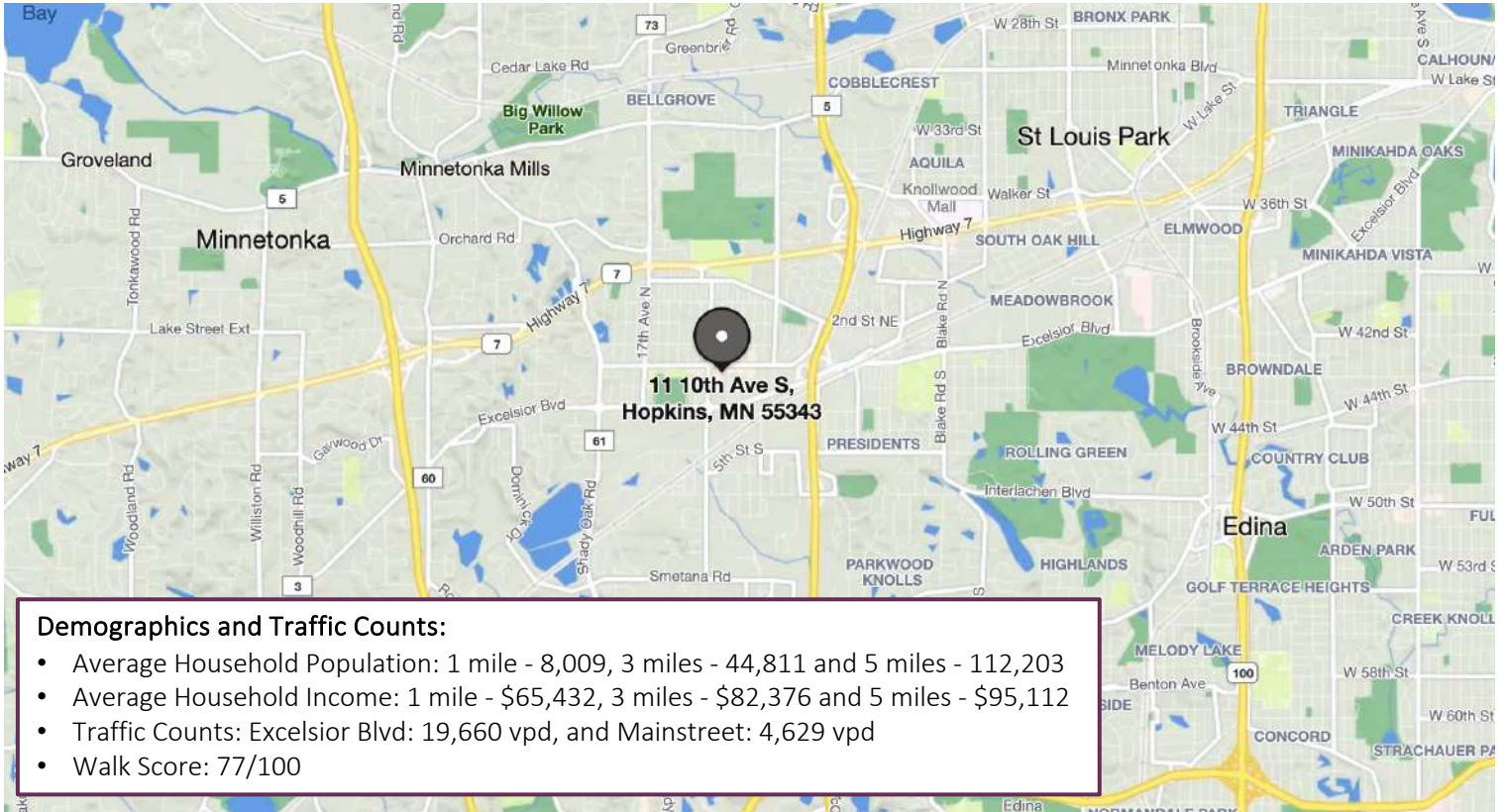
www.SpaceAvailableMN.com

Giving developers, business owners and commercial real estate investors the gifts of experience and personal attention.

3rd Level Floor Plan | Suite C - 813 SF



Map



Demographics and Traffic Counts:

- Average Household Population: 1 mile - 8,009, 3 miles - 44,811 and 5 miles - 112,203
- Average Household Income: 1 mile - \$65,432, 3 miles - \$82,376 and 5 miles - \$95,112
- Traffic Counts: Excelsior Blvd: 19,660 vpd, and Mainstreet: 4,629 vpd
- Walk Score: 77/100

Aerial



This information is accurate as of the date of printing and is subject to change without notice. All information is deemed accurate, but cannot be guaranteed.