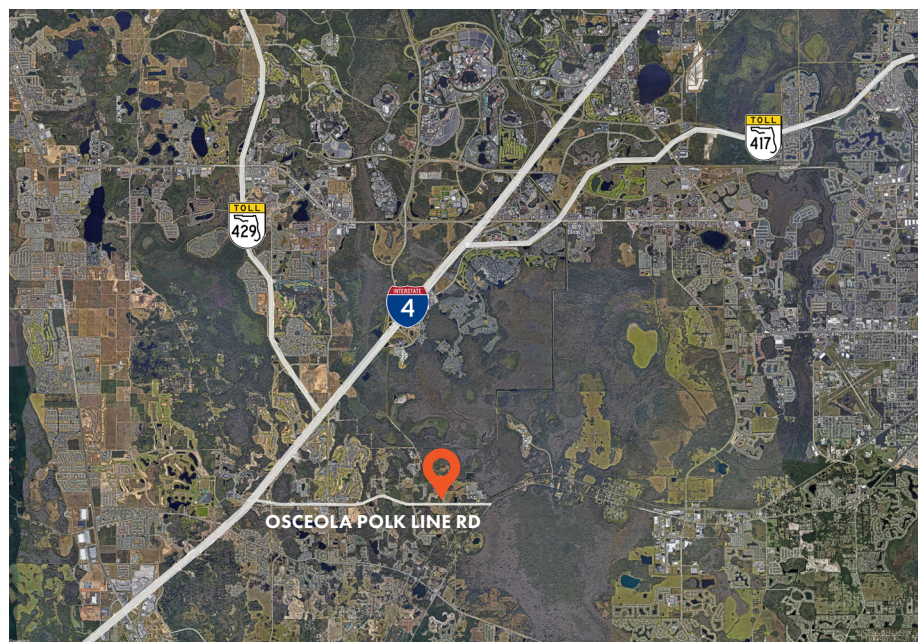


## AVAILABLE IMPROVEMENTS TO SUIT TENANT REQUIREMENTS



## PROPERTY DETAILS

- + 35 AC Available
- + \$3,500/acre monthly
- + Zoned Industrial I-G
- + Available improvements to suit tenant requirements
- + Adjacent to 6671 Osceola Polk Line Rd



## CONTACT US

**JUSTIN RUBY, SIOR, CCIM | PARTNER**  
407.865.0311  
justin.ruby@foundrycommercial.com

**CHARLES ATTAWAY | ASSOCIATE**  
407.963.4064  
charles.attaway@foundrycommercial.com

**JEROD FREELAND | VICE PRESIDENT**  
321.591.5404  
jerod.freeland@foundrycommercial.com