

F C FIRST CAPITAL
Property Group, Inc.
P G Commercial Real Estate Services

**MAIN STREET
SQUARE**



RETAIL SPACE FOR LEASE

7800 S US HWY 17-92, Fern Park, FL 32730

Contact: Trey Gravenstein E: Trey@FCPG.com
Vice President of Brokerage Services P: 407.872.0177 ext 119

Contact: Michael Castrilli E: Michael@FCPG.com
Senior Sales & Leasing Associate P: 407.872.0177 ext 130

For Lease: Negotiable, NNN

Suite 174: ± 1,050 SF | Available Immediately
Suite 182: ± 1,400 SF | Available 6.01.2024

Located at signalized intersection off high traffic Hwy 17-92 with 50,500 AADT

Less than 0.7 miles south from Hwy 17-92 and SR 436 intersection (66,000 AADT on SR 436)

4 Points of access with cross access to Dunkin Donuts, Baskin Robbins and Advanced Auto Parts

Building façade and large elevated marquee signage facing Hwy 17-92 available

Direct site lines to Hwy 17-92 with over 400' of frontage

Winn-Dixie remodeled in 2012 with focused departments to better service the local demographic

JOIN THESE RETAILERS!



Winn-Dixie

metroPCS

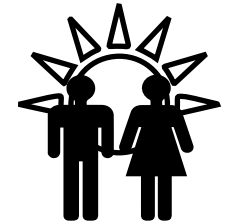
Davita
Medical Group

615 E. Colonial Drive, Orlando, FL 32803 Phone: 407.872.0209 www.FCPG.com

Information furnished regarding the subject property is believed to be accurate, but no guarantee or representation is made. References to square footage are approximate. This offering is subject to errors, omissions, prior sale or lease or withdrawal without notice. ©2024 First Capital Property Group, Inc., Licensed Real Estate Brokers & Managers.



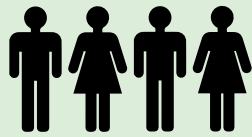
50,500
AADT ON HWY 17-92



413,927
DAYTIME POPULATION
WITHIN 15 MINS

DEMOGRAPHICS

2023



Total Population

18,000



Total Households

7,900



Average HH Income

\$98,430

5 Min

134,522

59,165

\$91,720

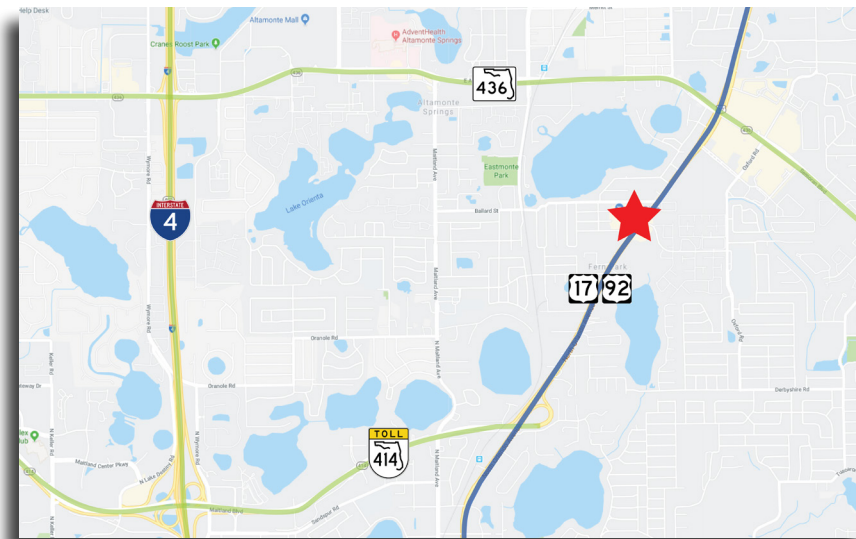
10 Mins

348,399

148,136

\$99,840

15 Mins



615 E. Colonial Drive, Orlando, FL 32803 Phone: 407.872.0209 www.FCPG.com

Information furnished regarding the subject property is believed to be accurate, but no guarantee or representation is made. References to square footage are approximate. This offering is subject to errors, omissions, prior sale or lease or withdrawal without notice. ©2024 First Capital Property Group, Inc., Licensed Real Estate Brokers & Managers.





AVAILABILITY

Suite 174: ± 1,050 SF

Suite 182: ± 1,400 SF

■ 615 E. Colonial Drive, Orlando, FL 32803 ■ Phone: 407.872.0209 ■ www.FCPG.com ■

Information furnished regarding the subject property is believed to be accurate, but no guarantee or representation is made. References to square footage are approximate. This offering is subject to errors, omissions, prior sale or lease or withdrawal without notice. ©2024 First Capital Property Group, Inc., Licensed Real Estate Brokers & Managers.

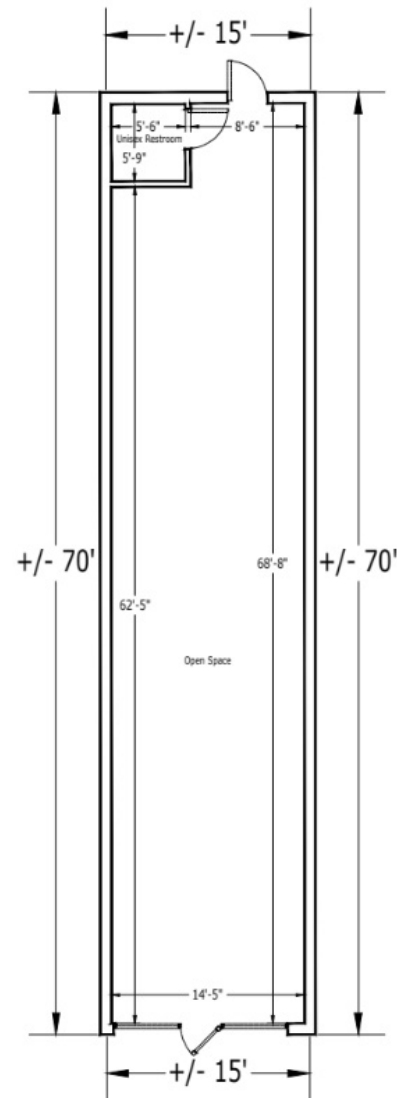
SUITES 174

SUITE 174

± 1,050 SF

Dimensions: ± 15' x ± 70'

Bathrooms: 1 (± 5'6" x ± 5' 9")



■ 615 E. Colonial Drive, Orlando, FL 32803 ■ Phone: 407.872.0209 ■ www.FCPG.com ■

Information furnished regarding the subject property is believed to be accurate, but no guarantee or representation is made. References to square footage are approximate. This offering is subject to errors, omissions, prior sale or lease or withdrawal without notice. ©2024 First Capital Property Group, Inc., Licensed Real Estate Brokers & Managers.

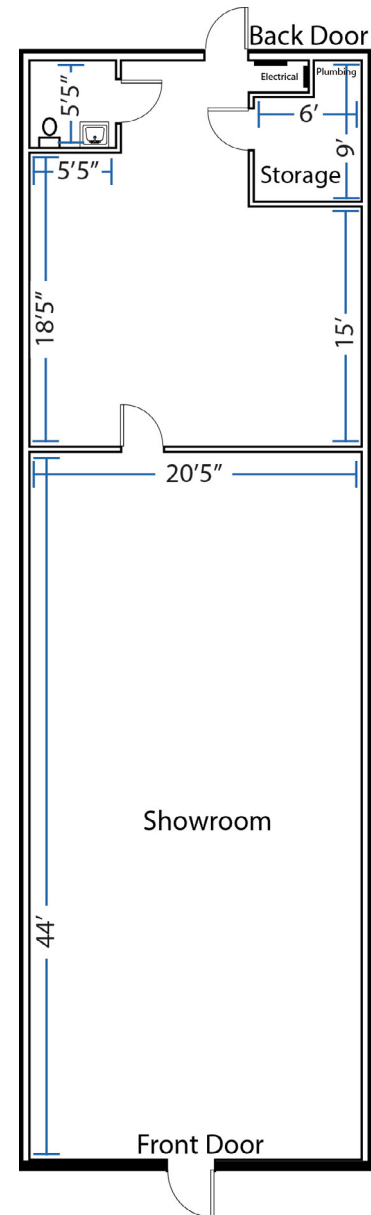
SUITES 182

SUITE 182

± 1,050 SF

Dimensions: ± 20'5" x ± 68'

Bathrooms: 1 (± 5'5" x ± 5' 5")



■ 615 E. Colonial Drive, Orlando, FL 32803 ■ Phone: 407.872.0209 ■ www.FCPG.com ■

Information furnished regarding the subject property is believed to be accurate, but no guarantee or representation is made. References to square footage are approximate. This offering is subject to errors, omissions, prior sale or lease or withdrawal without notice. ©2024 First Capital Property Group, Inc., Licensed Real Estate Brokers & Managers.



FIRST CAPITAL
Property Group, Inc.

Commercial Real Estate Services