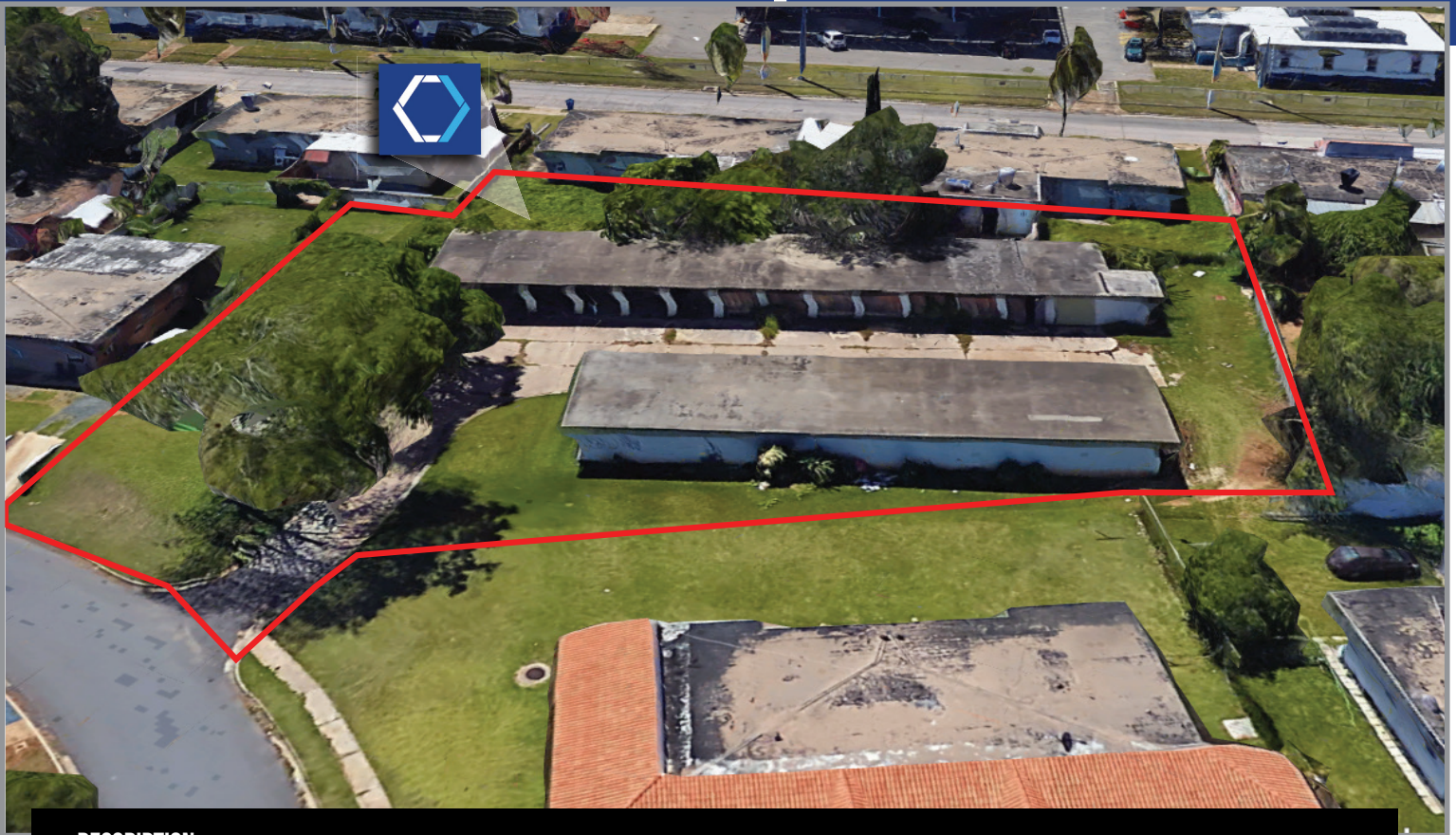


# RAMEY STORAGE PROPERTY FOR LEASE



## DESCRIPTION:

Former storage facility consisting of approximately 6,344 square feet situated on a 2,767.5 square meters lot located at Circle E #G1, Ramey Base, Aguadilla, next to Levain Bakery, Allied Car Rental and ideal for a storage facility, park & fly concept, or residential conversion, among other.

## LOCATION:

Circle E #G1, Ramey Base, Aguadilla, Puerto Rico

## BUILDING AREA:

Building A: 3,692 square feet  
Building B: 2,652 square feet  
Total building area: 6,344 square feet

## SITE AREA:

2,767.5 square meters

## ZONING:

R-I (Intermediate Residential)

Common zoning in the area is C-I (intermediate commercial) which allows commercial uses in line with the urban location of this vicinity; residential zoning is also common in the sector.

## LOCATION INFLUENCE:

Densely populated area surrounded by many supporting commercial and residential uses. Specifically next to Rafael Hernandez Airport. In the immediate vicinity of many commercial, industrial and institutional uses, including pharmacies, gas stations, fast food restaurants, University of Puerto Rico-Aguadilla Campus, Ramey school, Mariott Courtyard Hotel, various car rental companies, Lufthansa, Honeywell Aerospace, among other.

## SITE COORDINATES:

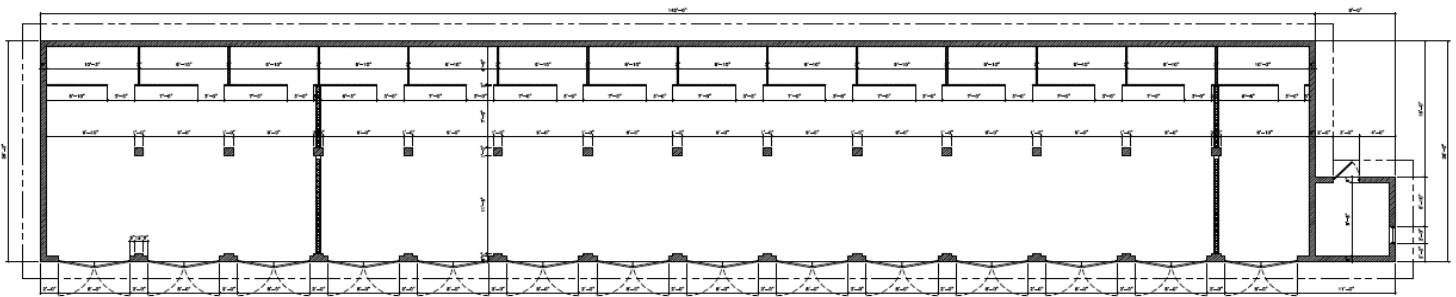
Latitude: 18°29'55.94"N

Longitude: 67°7'51.09"W

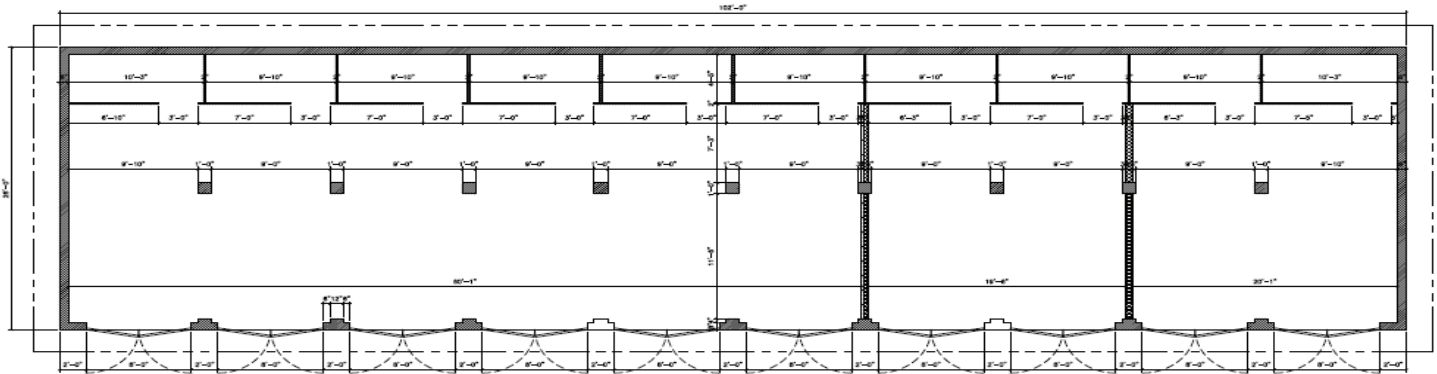




### As-Built



PLANTA DE DISTRIBUCION ARQUITECTONICA EXISTENTE EDIFICIO "A"  
Building A: 3,692 square feet



PLANTA DE DISTRIBUCION ARQUITECTONICA EXISTENTE EDIFICIO "B"  
Building B: 2,652 square feet