

For Sale

# Office Condo

1,715 SF | \$350,000



## Williamson Executive Park

104 La Costa Lane, Unit 110, Daytona Beach, Florida 32114

### Property Highlights

- Location, location, location!
- Exceptional spot at the intersection of Dunn Avenue and Williamson Blvd in the Williamson Executive Park
- Monument signage on Williamson Blvd
- Approximately 1,715 SF
- Professional office space in great condition
- Immediate occupancy - excellent opportunity for an owner-user
- Outstanding access to Williamson Blvd, International Speedway Blvd (US Hwy 17-92), LPGA Blvd & I-95
- Surrounded by dense residential development and close to Halifax Health Hospital



**Sale Price: \$350,000**

For more information

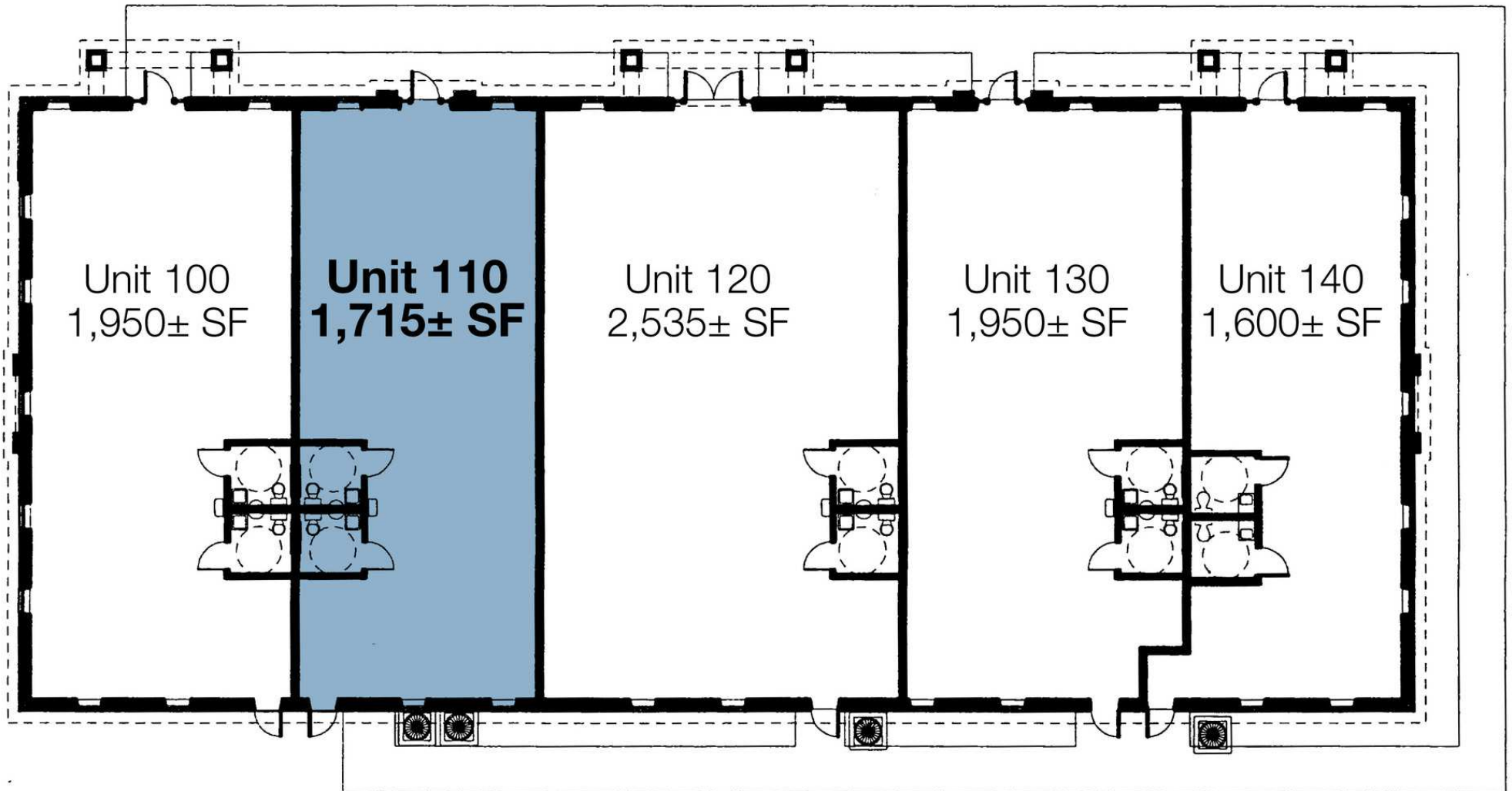
**Brad Gifford**

O: 386 506 0037  
bgifford@realvest.com

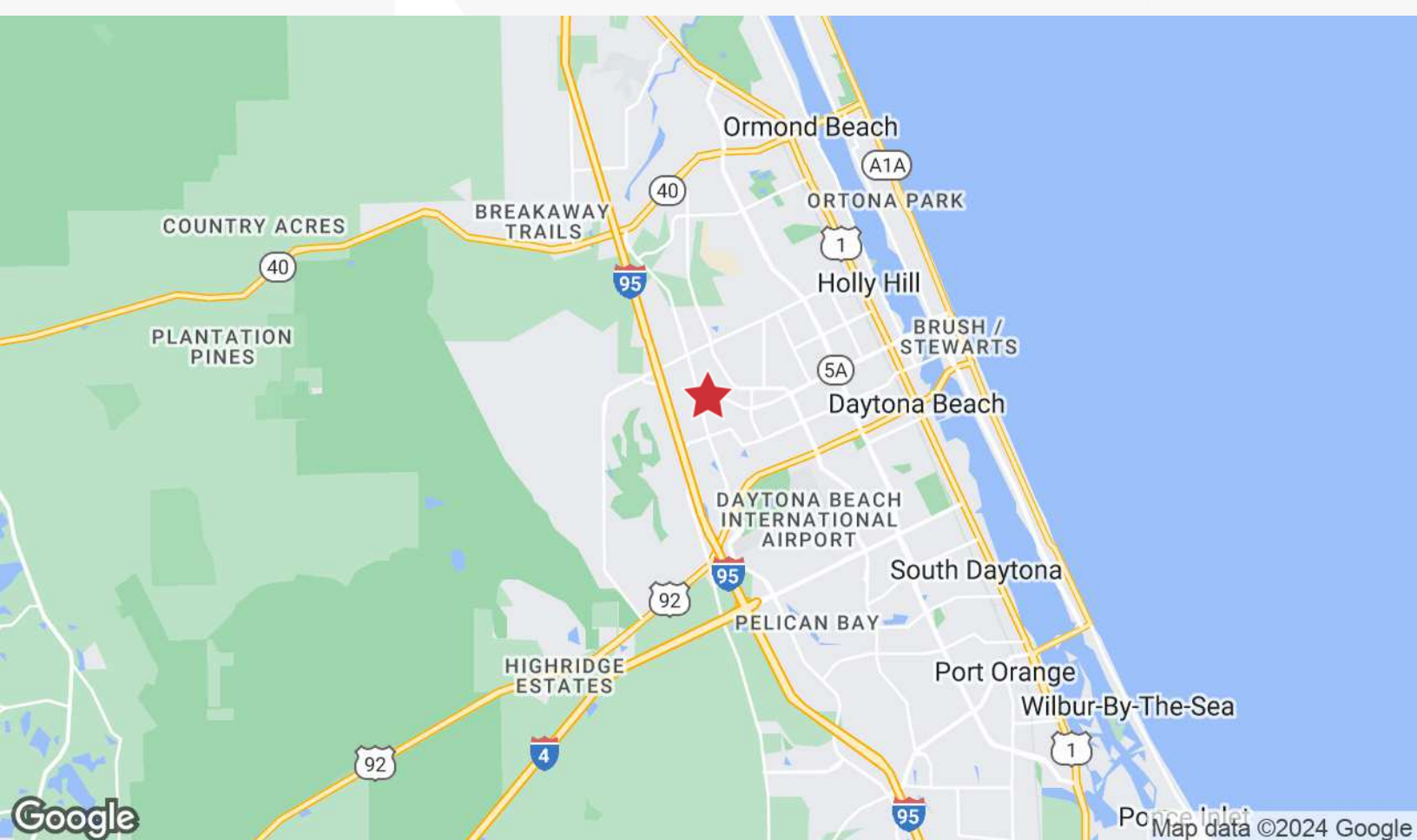
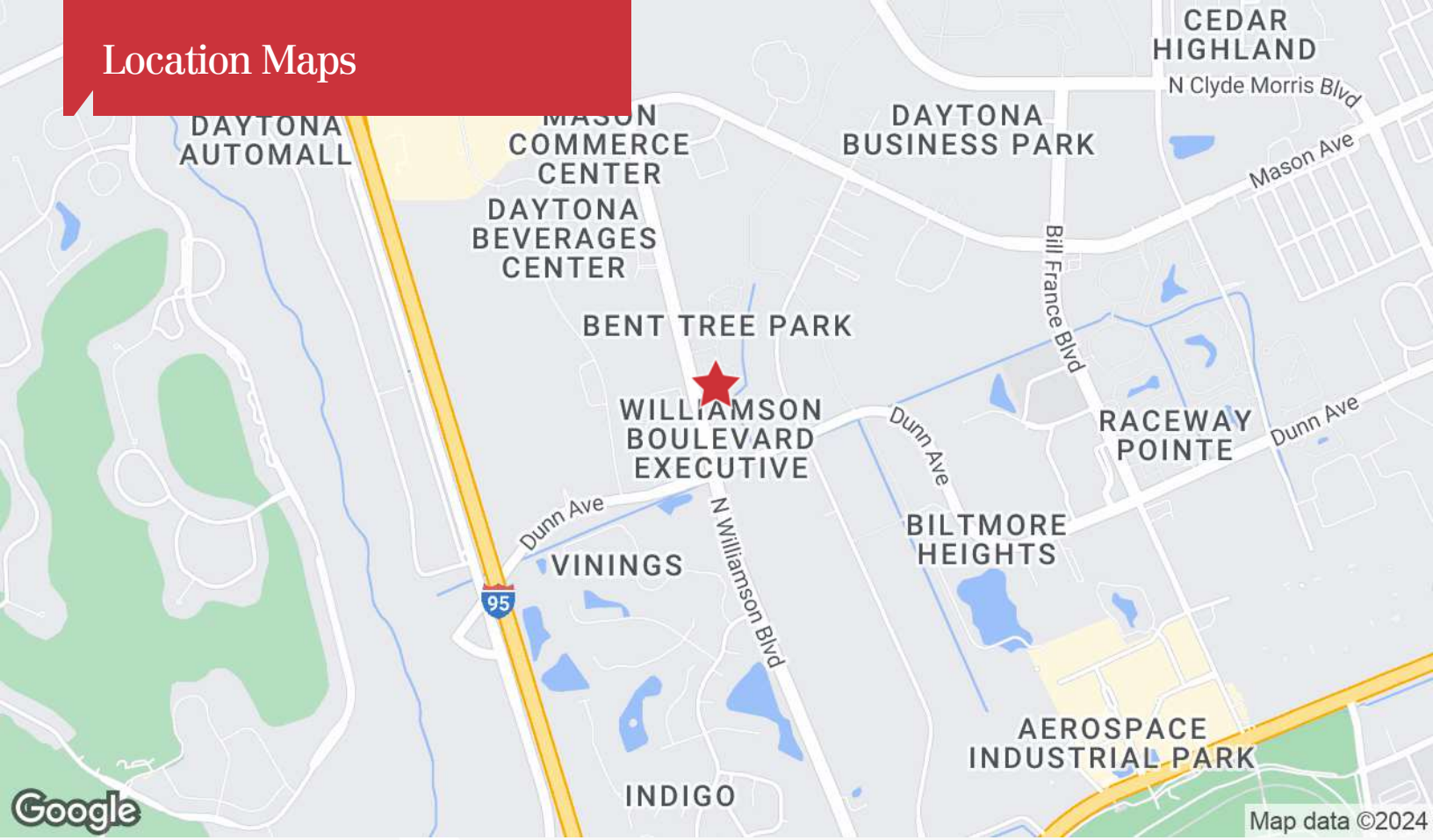
# Building Photos

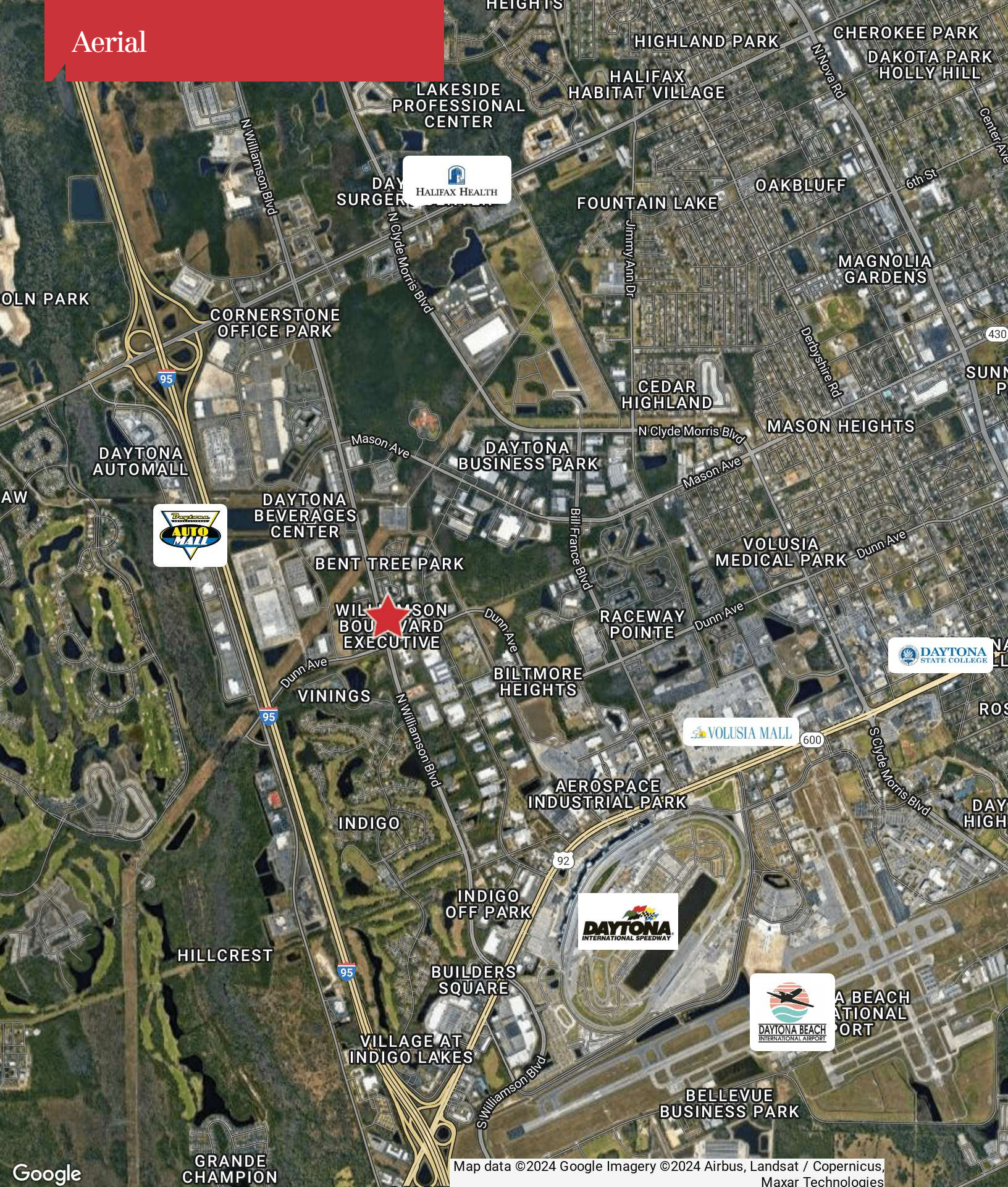


# Building Floor Plan



# Location Maps

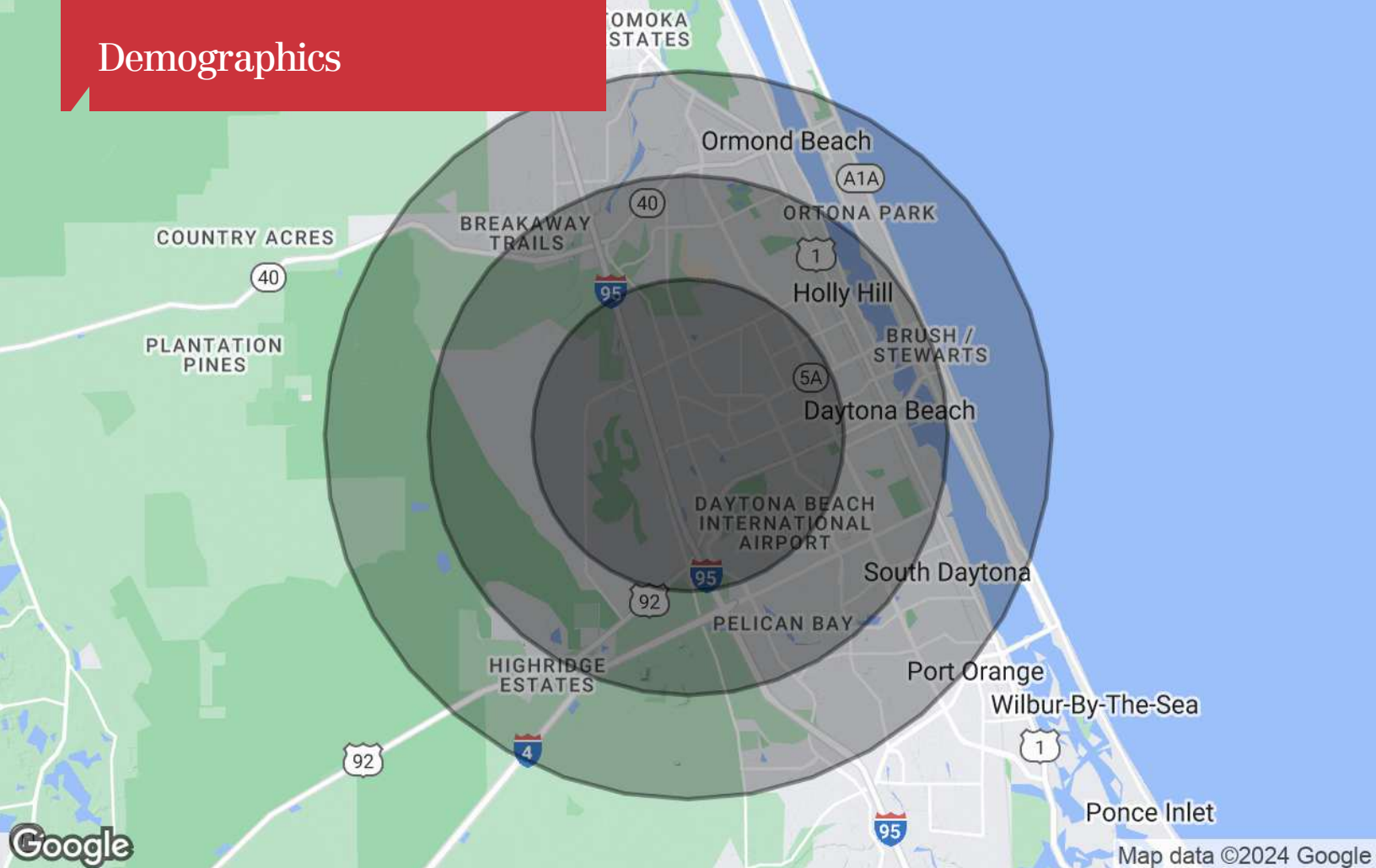




Google

Map data ©2024 Google Imagery ©2024 Airbus, Landsat / Copernicus, Maxar Technologies

# Demographics



## Population

	3 Miles	5 Miles	7 Miles
TOTAL POPULATION	33,396	118,303	183,197
MEDIAN AGE	41	44	46
MEDIAN AGE (MALE)	40	43	45
MEDIAN AGE (FEMALE)	42	45	47

## Households & Income

	3 Miles	5 Miles	7 Miles
TOTAL HOUSEHOLDS	13,516	51,148	80,556
# OF PERSONS PER HH	2.5	2.3	2.3
AVERAGE HH INCOME	\$66,210	\$66,719	\$71,078
AVERAGE HOUSE VALUE	\$239,358	\$241,511	\$275,143

\* Demographic data derived from 2020 ACS - US Census