

OFFICE SPACE FOR LEASE

147 E Lyman Ave, Winter Park, FL



HIGHLIGHTS

- 7,966 SF office building.
- 1,483 SF office space available.
- Located in the heart of downtown Winter Park.
- Proximity to the most desirable location for upscale retail and dining in Central Florida.
- Ease of access for employees and clients with ample parking.
- Suite includes 5 private offices along with reception area.
- Class A build out, previous use as a law office.



Demographics	1 Mile	3 Miles	5 Miles
Population	7,962	96,580	275,997
HH Income	\$141,006	\$120,407	\$98,509
Daytime Employees	22,162	120,943	332,560

MONTE MITCHELL | Monte@FornessProperties.com | 407.988.0073
www.FornessProperties.com | Licensed Real Estate Broker



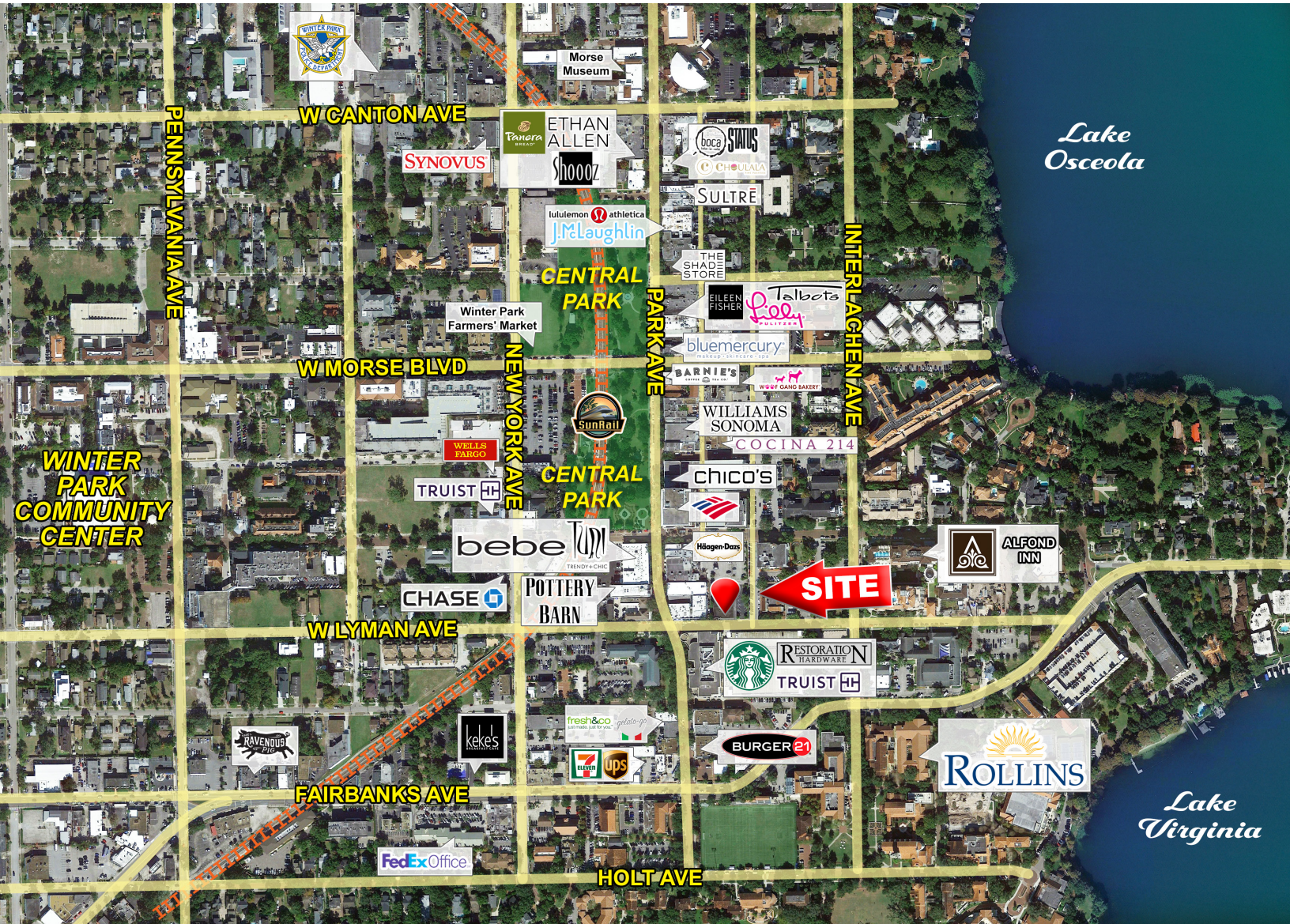
OFFICE SPACE FOR LEASE

147 E Lyman Ave, Winter Park, FL



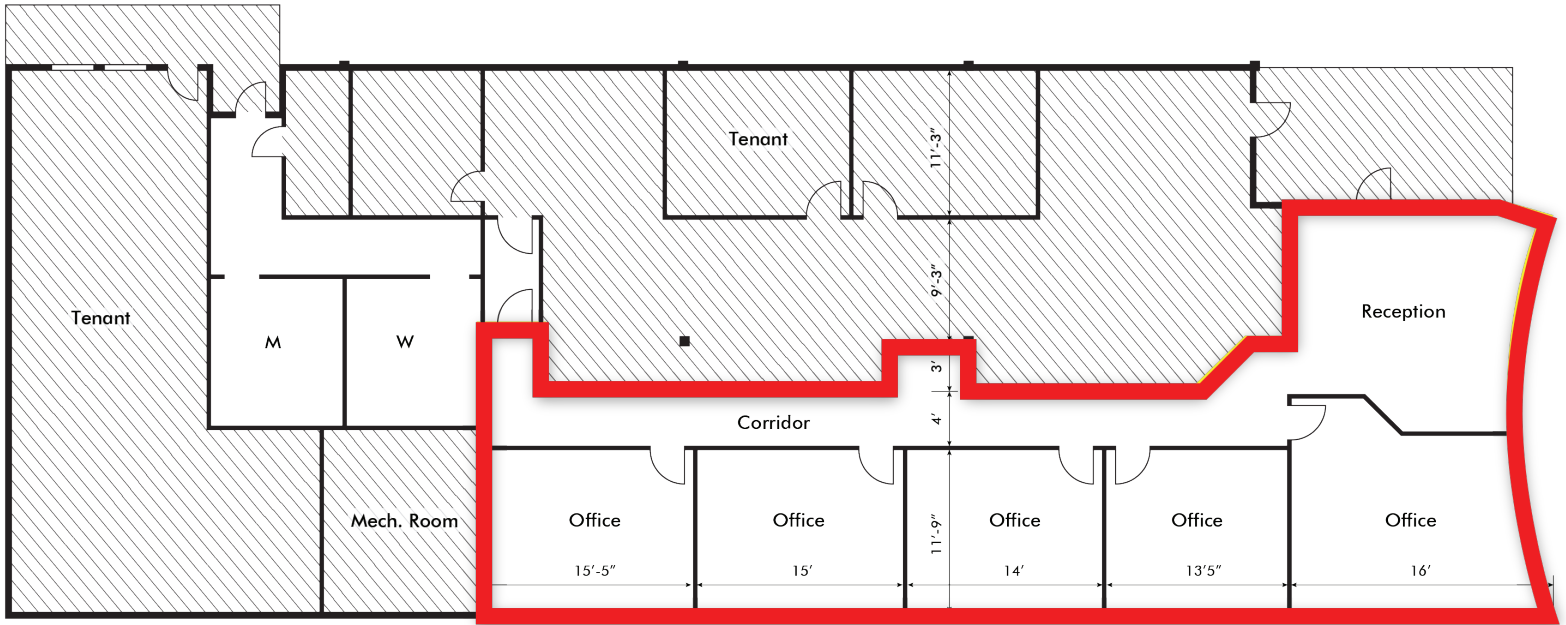
OFFICE SPACE FOR LEASE

147 E Lyman Ave, Winter Park, FL



OFFICE SPACE FOR LEASE

147 E Lyman Ave, Winter Park, FL



147 LYMAN AVE, SUITE D
WINTER PARK, FL 32789
1,483 SF

