

EXECUTIVE SUMMARY

• 1755 Palm Bay Rd NE Palm Bay, FL 32905



OFFERING SUMMARY

Sale Price:	\$1,250,000
Price / SF:	\$444.84
Lot Size:	1.03 Acres
Year Built:	1982
Building Size:	2,810 SF
Zoning:	CC
APN#:	28 3722-00-269

PROPERTY OVERVIEW

Purchase opportunity in a prime location with high visibility on Palm Bay Road NE. Prior QSR surrounded by national and regional tenants. High traffic counts and easy access.

LOCATION OVERVIEW

East of the Babcock Street and Palm Bay Rd intersection, one of the busiest in Brevard County.

JEFFERY T. ROBISON, CCIM

President | Broker
321.722.0707 X13
jeff@teamlbr.com

Lightle Beckner Robison, Inc.

321.722.0707 • teamlbr.com
70 W. Hibiscus Blvd.,
Melbourne, FL 32901

Information contained herein has been obtained through sources deemed reliable but cannot be guaranteed as to its accuracy. A purchaser or lessee is expected to verify all information to his/her own satisfaction. Zoning information subject to change and not warranted. Always confirm current requirements with local governing agencies.

ADDITIONAL PHOTOS

• 1755 Palm Bay Rd NE Palm Bay, FL 32905



JEFFERY T. ROBISON, CCIM

President | Broker
321.722.0707 X13
jeff@teamlbr.com

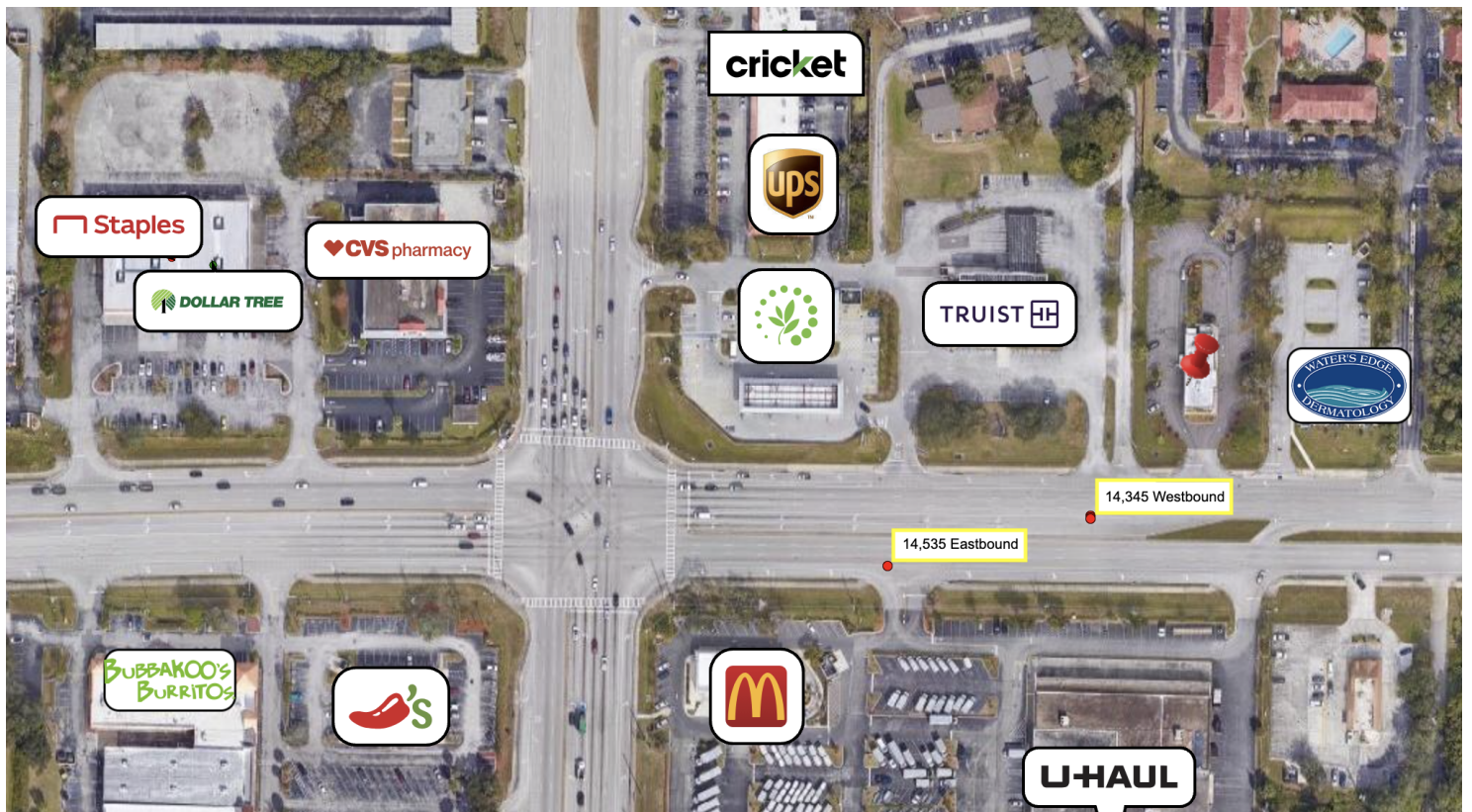
Lightle Beckner Robison, Inc.

321.722.0707 • teamlbr.com
70 W. Hibiscus Blvd.,
Melbourne, FL 32901

Information contained herein has been obtained through sources deemed reliable but cannot be guaranteed as to its accuracy. A purchaser or lessee is expected to verify all information to his/her own satisfaction. Zoning information subject to change and not warranted. Always confirm current requirements with local governing agencies.

RETAIL MAP

• 1755 Palm Bay Rd NE Palm Bay, FL 32905



JEFFERY T. ROBISON, CCIM

President | Broker
321.722.0707 X13
jeff@teamlbr.com

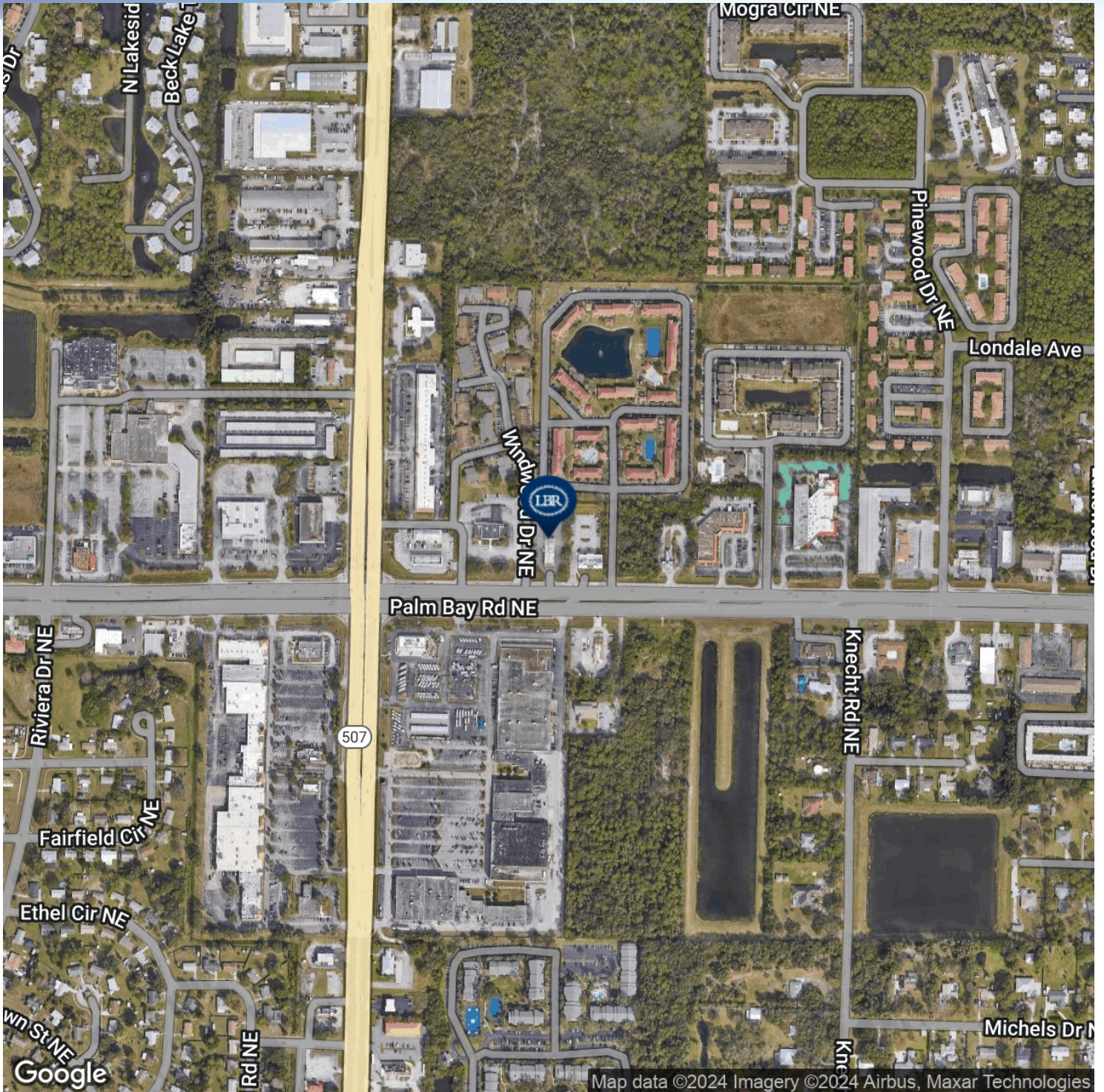
Lightle Beckner Robison, Inc.

321.722.0707 • teamlbr.com
70 W. Hibiscus Blvd.,
Melbourne, FL 32901

Information contained herein has been obtained through sources deemed reliable but cannot be guaranteed as to its accuracy. A purchaser or lessee is expected to verify all information to his/her own satisfaction. Zoning information subject to change and not warranted. Always confirm current requirements with local governing agencies.

LOCATION MAP

• 1755 Palm Bay Rd NE Palm Bay, FL 32905



JEFFERY T. ROBISON, CCIM

President | Broker
321.722.0707 X13
jeff@teamlbr.com

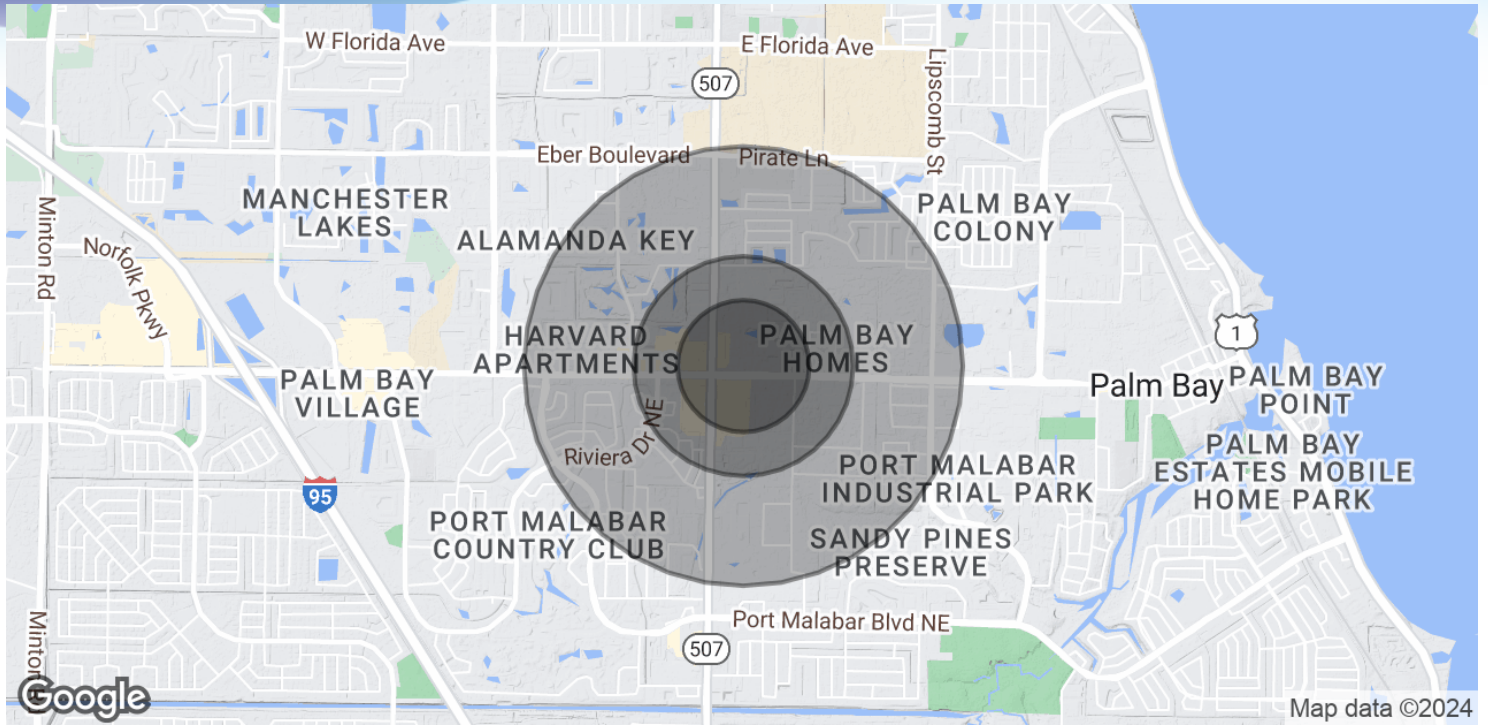
Lightle Beckner Robison, Inc.

321.722.0707 • teamlbr.com
70 W. Hibiscus Blvd.,
Melbourne, FL 32901

Information contained herein has been obtained through sources deemed reliable but cannot be guaranteed as to its accuracy. A purchaser or lessee is expected to verify all information to his/her own satisfaction. Zoning information subject to change and not warranted. Always confirm current requirements with local governing agencies.

DEMOGRAPHICS MAP & REPORT

• 1755 Palm Bay Rd NE Palm Bay, FL 32905



POPULATION

	0.3 MILES	0.5 MILES	1 MILE
Total Population	1,056	2,912	12,447
Average Age	36	39	44
Average Age (Male)	33	37	42
Average Age (Female)	39	42	46

HOUSEHOLDS & INCOME

	0.3 MILES	0.5 MILES	1 MILE
Total Households	496	1,383	5,921
# of Persons per HH	2.1	2.1	2.1
Average HH Income	\$42,456	\$50,728	\$62,927
Average House Value	\$286,932	\$281,904	\$243,698

Demographics data derived from AlphaMap

JEFFERY T. ROBISON, CCIM

President | Broker
321.722.0707 X13
jeff@teamlbr.com

Lightle Beckner Robison, Inc.

321.722.0707 • teamlbr.com
70 W. Hibiscus Blvd.,
Melbourne, FL 32901

Information contained herein has been obtained through sources deemed reliable but cannot be guaranteed as to its accuracy. A purchaser or lessee is expected to verify all information to his/her own satisfaction. Zoning information subject to change and not warranted. Always confirm current requirements with local governing agencies.