



Bishop Beale Duncan
COMMERCIAL REAL ESTATE

1743 Park Center Drive, Suite 300
Orlando, Florida 32835

CLASS "A" ORLANDO MEDICAL OFFICE



SUB-LEASE

- + Lease Rate: \$27 / SF (FS)
- + Available SF: 4,295 SF
- + Building Size: 36,828 SF
- + Primary Use: Medical
- + Parking: 4.89 / 1,000

Highlights

- Located in the Metro West Area
- Beautiful Space Recently Built-out for Medical Use
- 6 Exam Rooms with Plumbing
- Modern Waiting Area and Reception Office
- Covered Parking Available



JONATHAN CLAYTON

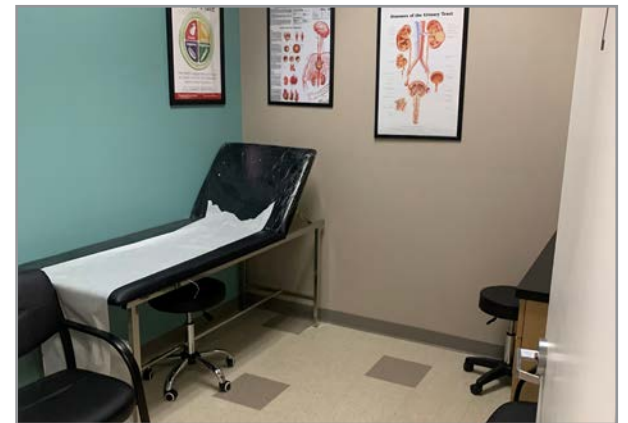
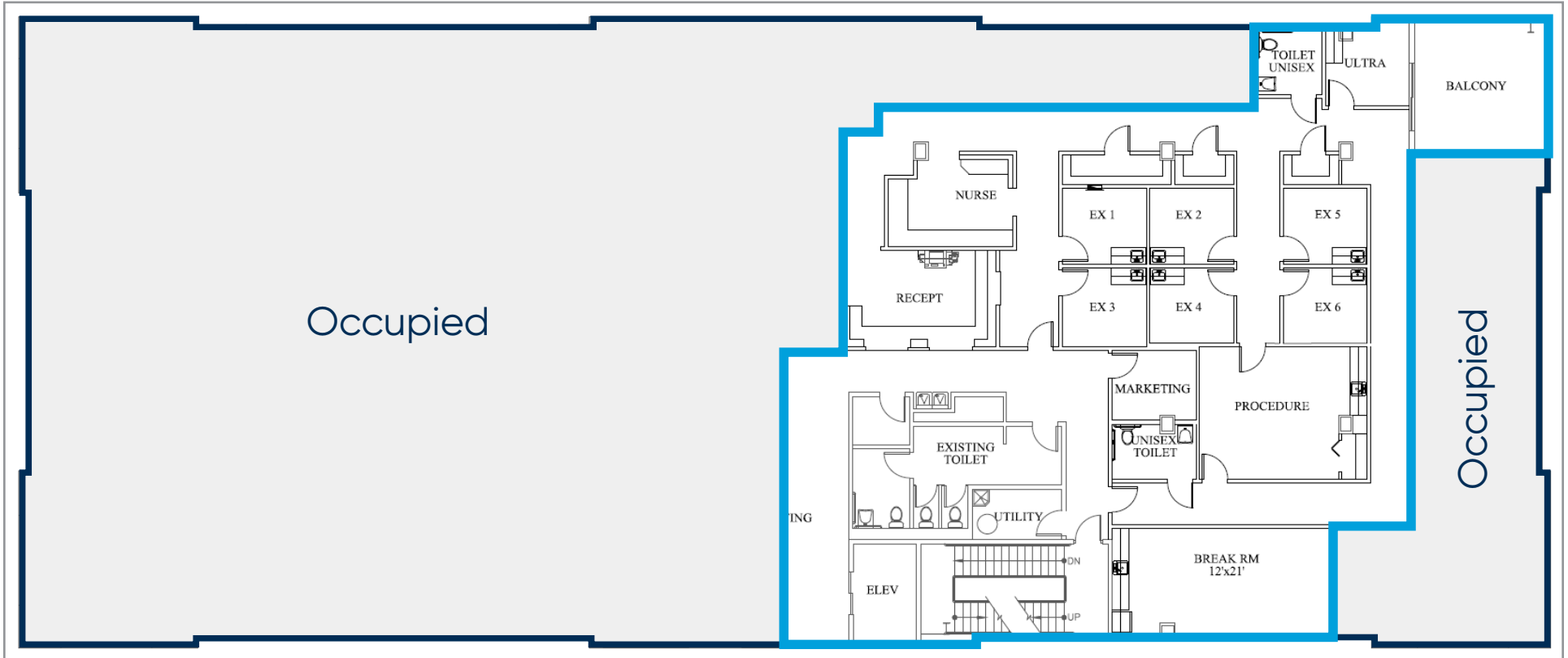
Vice President
(407) 734.7212
Jonathan@BBDRE.com

This offer is subject to errors, omissions, prior sale or withdrawal without notice.



BISHOP BEALE DUNCAN
250 N. Orange Ave., Ste. 1500
Orlando, FL 32801 + (407) 426.7702
www.BBDRE.com

Floor Plan & Images



Location Aerial

4.1 MILES

to Interstate 4

3.7 MILES

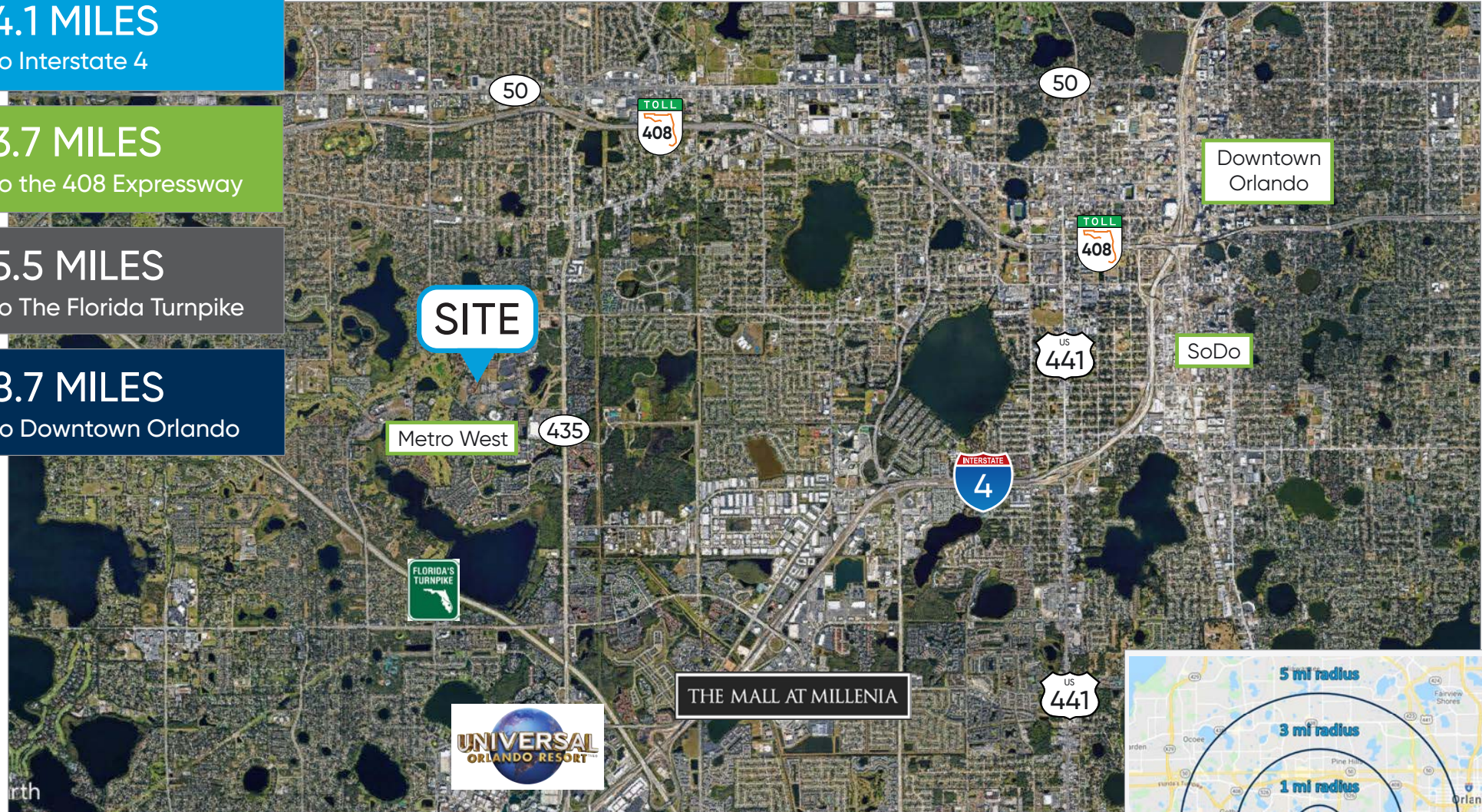
to the 408 Expressway

5.5 MILES

to The Florida Turnpike

8.7 MILES

to Downtown Orlando



Radius	Population	HH Income	Businesses	Employees
1-Mile	23,994	\$62,221	1,377	7,368
3-Mile	113,385	\$70,486	5,975	43,798
5-Mile	300,212	\$70,992	15,166	135,844

