

1,458 RSF AVAILABLE FOR LEASE

THE PLAZA CONDO | ORLANDO, FL

# THE PLAZA CONDO

**LOCATED IN THE HEART OF DOWNTOWN**

SUITE 1520

1,458 RSF

**FOR LEASE**







### **CLASS-A DEVELOPMENT**

The Plaza Condo is located in the heart of Orlando's Central Business District. There are plenty of restaurants within walking distance as well as access to businesses located in Downtown Orlando.

| SUITE | RSF   |
|-------|-------|
| 1520  | 1,458 |

---

### **PROPERTY FEATURES**

- 3 Private Offices
- Executive Offices with floor to ceiling windows
- Reception Area
- On-site retail, restaurants, and 12 cinema theater

FOR MORE INFORMATION:

**ROGER SODERSTROM JR** | 407.617.2830 | [ROGER@STIRLINGINT.COM](mailto:ROGER@STIRLINGINT.COM)  
Managing Broker

**STIRLING** | **INTERNATIONAL**  
REAL ESTATE



1520 SOUTH TOWER

SUITE B









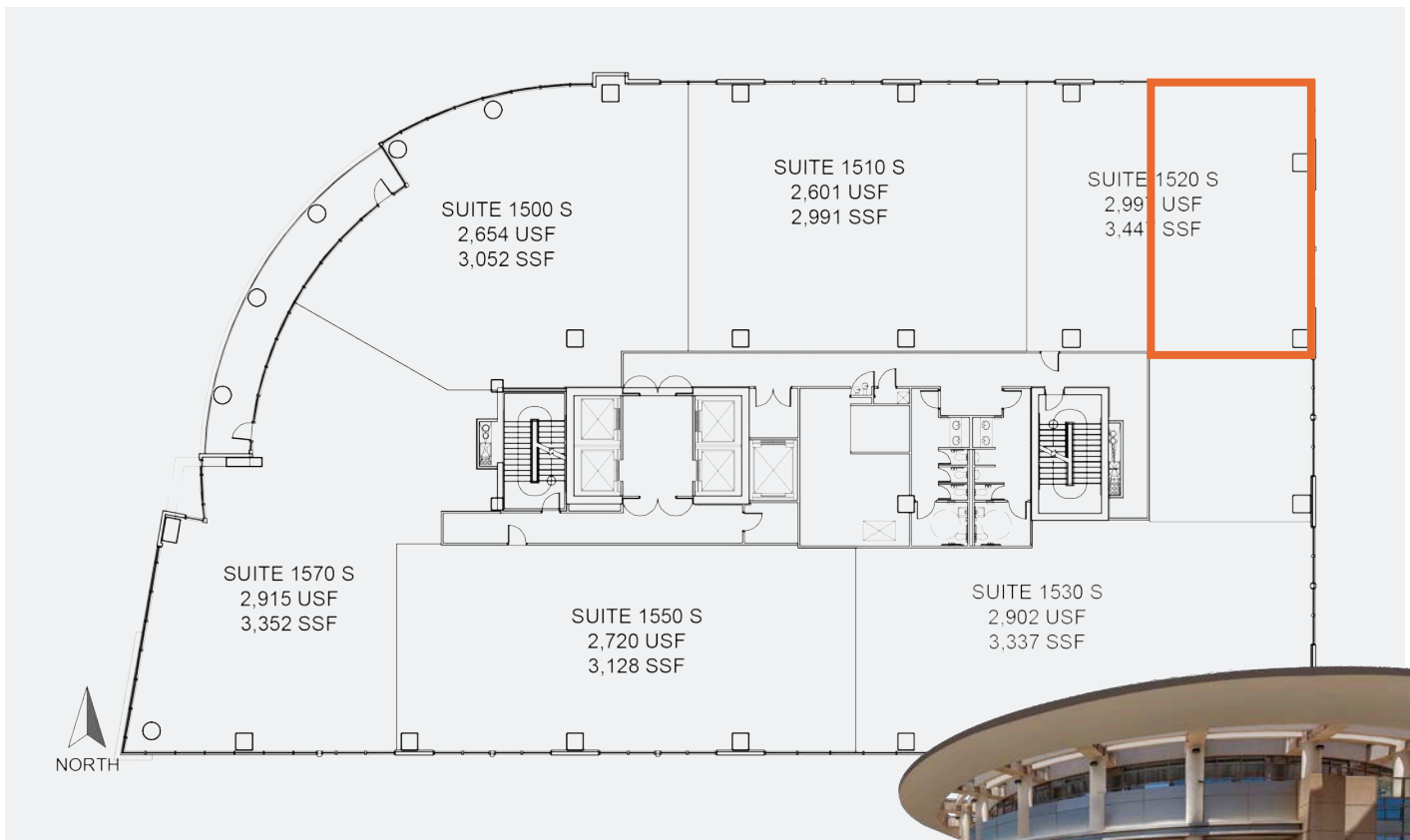
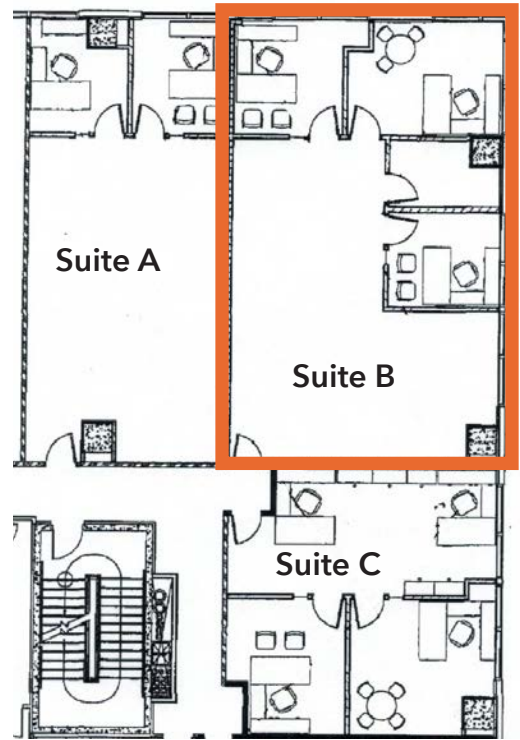
# OFFICE FOR LEASE

## 15th Floor

- 1,458 SF
- Class A Office Suites
- Prime Corner Suite with Lake Eola Views

Lease Rate: \$32/SF MG

### FLOOR PLAN



## 1520 SOUTH TOWER





*"The Orlando region is No. 1 in the nation for job growth for the fourth consecutive year. According to the Bureau of Labor Statistics, the Orlando-Kissimmee-Sanford metropolitan statistical area (MSA) continued its trajectory as the fastest growing job market in the country for 2018."*



Sunrail, Church Station



Amway Center



Dr. Phillips Performing Arts Center



Orlando Soccer Stadium



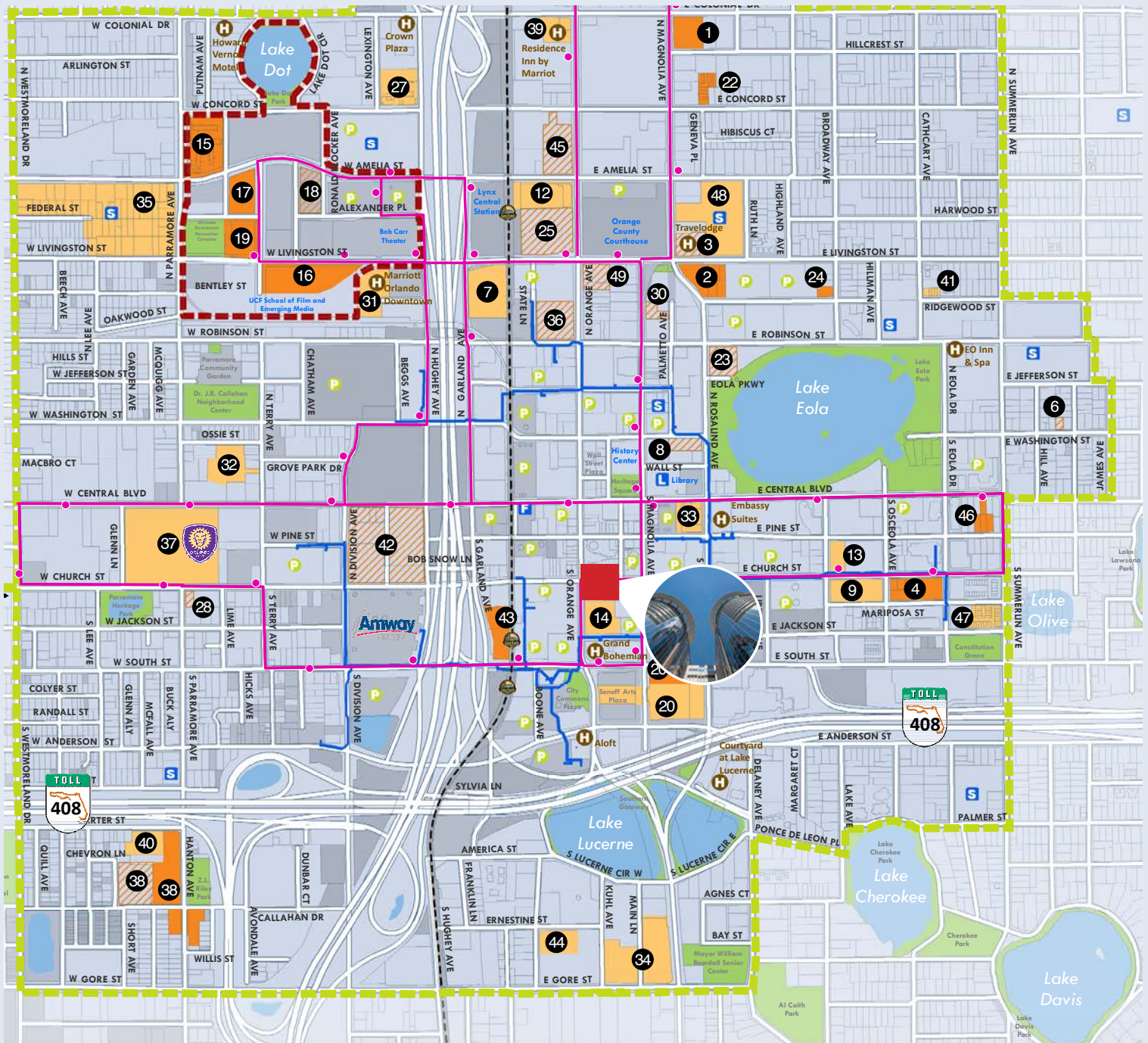
Lake Eola, Downtown Orlando

Downtown Orlando, FL





# Planned and Recently Completed Projects



- |                           |  |  |  |
|---------------------------|--|--|--|
| 1. 107 Hillcrest          | 13. Citi Tower                                       | 20. Citrus Center                                    | Improvements   |
| 2. 333 North Rosalind     | 14. Citrus Center                                    | Improvements   | 27. Creative Village - Amelia Court                  |
| 3. 409 North Magnolia     | Improvements   | 21. Creative Village - Amelia Court                  | 28. Creative Village - Dr. Phillips Academic Commons |
| 4. 520 East               | 15. Creative Village - Amelia Court                  | 22. Creative Village - Dr. Phillips Academic Commons | 29. Creative Village - Parcel M Apartments           |
| 5. 800 North Orange       | 16. Creative Village - Dr. Phillips Academic Commons | 23. Creative Village - Parcel M Apartments           | 30. Creative Village - Parcel U Apartments           |
| 6. 811 East Washington    | 17. Creative Village - Parcel M Apartments           | 24. Creative Village - Parcel U Apartments           |  |
| 7. Ace Café               | 18. Creative Village - Parcel U Apartments           | 25. Citi Tower                                       |  |
| 8. Cambria Suites Hotel   | 19. Citi Tower                                       | 26. Citrus Center                                    |  |
| 9. Camden Thornton Park   |  |  |  |
| 10. Camping World Stadium |  |  |  |
| 11. Camden North Quarter  |  |  |  |
| 12. Central Station       |  |  |  |

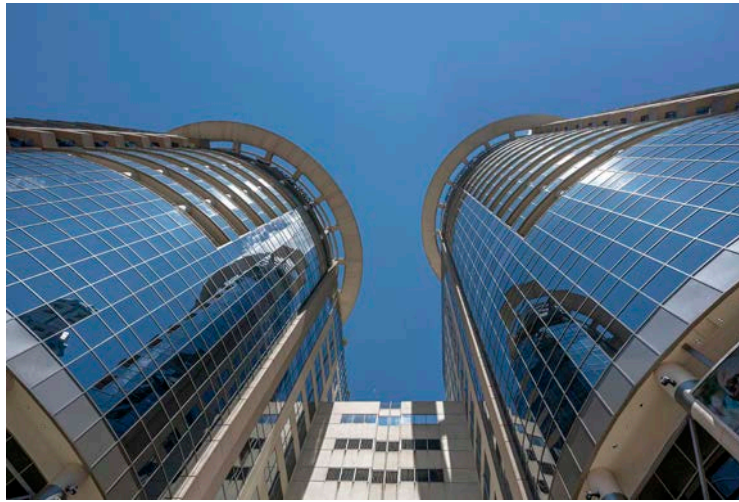




THE  
PLAZA



Lake Eola, Downtown Orlando



**Roger Soderstrom Jr.**

Managing Broker

407.617.2830

[roger@stirlingint.com](mailto:roger@stirlingint.com)

STIRLING | INTERNATIONAL  
REAL ESTATE

Disclaimer: Offering is subject to errors, omission, prior sale or withdrawal without notice. Plaza unit and building information, including sizes, pricing, property features, terms, availability and amenities, are subject to change, prior sale or withdrawal at any time without notice or obligation. Drawings, photographs, renderings, video, scale models, square footages, floor plans, elevations, features, colors and sizes are approximate for presentation purposes only and may vary from the homes as built. Home prices refer to the base price of the house and do not include options or premiums, unless otherwise indicated for a specific home. Nothing printed or on the website should be construed as legal, accounting or tax advice.