

# RETAIL FOR LEASE

## Crystal Lake Plaza

2852 CURRY FORD RD, ORLANDO, FL 32806



### AVAILABLE SPACES

Suite	Rate	Size	Type
2852	Call For Pricing	1,005 SF	NNN

### OFFERING SUMMARY

SPACE AVAILABLE:	1,005 SF
LEASE RATE:	Call For Pricing
LEASE TYPE:	NNN
CURRY FORD RD AADT:	7,800
CRYSTAL LAKE AADT:	8,300
ZONING:	AC-1
FUTURE LAND USE:	COMM-AC
LOT SIZE:	7.5 AC
YEAR BUILT:	1963
BUILDING SIZE:	77,336 SF

### Property Overview

- Located just one block away from the Hourglass District, the Winn-Dixie anchored Crystal Lake Plaza is an excellent choice for both national and local businesses
- 3-Mile Population: 116,713
- 3-Mile Median HHI: \$48,580



The calculations and data presented are deemed to be accurate, but not guaranteed. They are intended for the purpose of illustrative projections and analysis. The information provided is not intended to replace or serve as substitute for any legal, accounting, investment, real estate, tax or other professional advice, consultation or service.

## CONTACT US

**FRANCISCO JARAMILLO, CCIM**

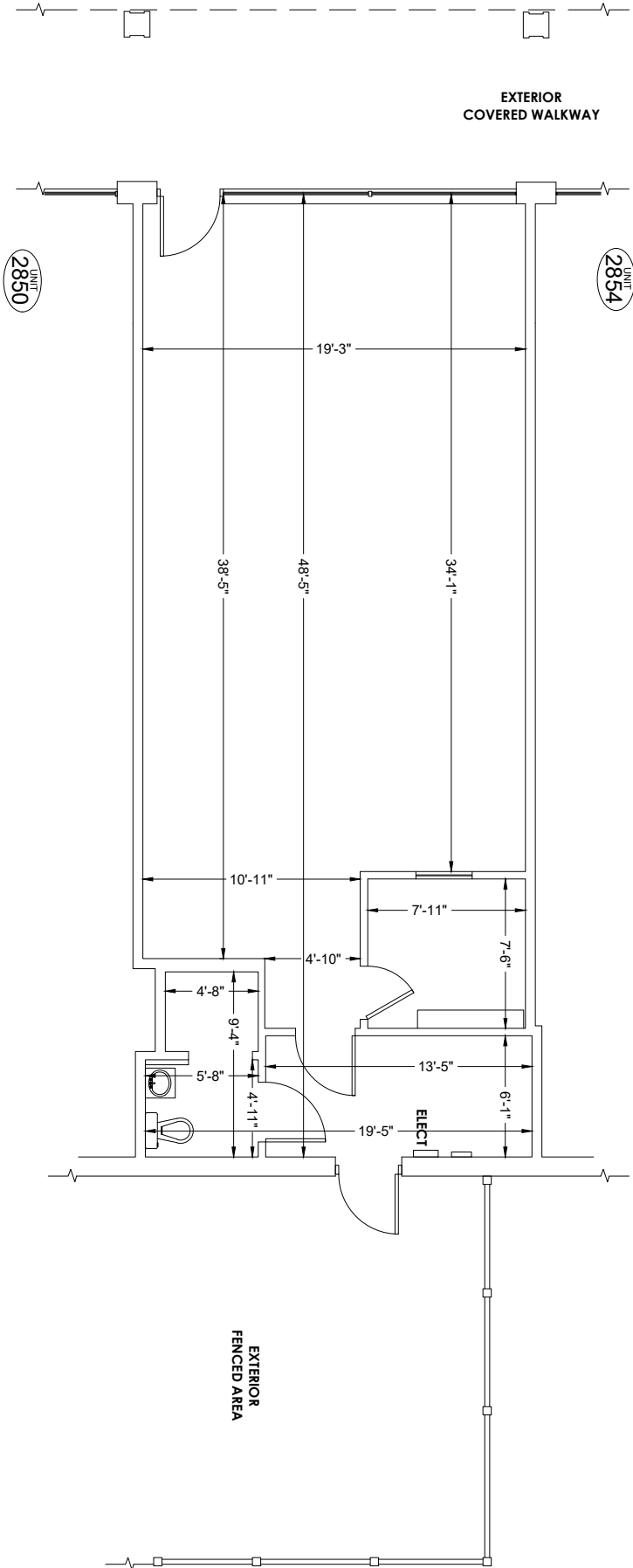
Principal, Managing Broker

(407) 683-4444

Francisco@407cre.com

BK 3252370, FL





SCALE:



SCALE: 3/16" = 1'-0"

SHEET TITLE: FLOOR PLAN

SHEET NUMBER: A-1

PROJECT NUMBER: 24-0115  
 DRAWN BY: OR  
 CHECKED BY: BJM  
 DATE: FEBRUARY 2024

PROJECT NAME: RETAIL SPACE  
 2852 CURRY FORD ROAD  
 ORLANDO, FLORIDA 32806

PREPARED FOR: GREEN 29 LLC  
 C/O TRU MANAGEMENT GROUP, LLC  
 PO BOX 541557  
 ORLANDO, FLORIDA 32854

ORLANDO 407.971.8888  
 TAMPA 727.548.9595  
 WWW.MEASUREDYNAMICS.COM

