

For Lease

# Office Space with Parking

1,077 - 6,705 SF | \$28.75 SF



## 605 East Robinson Street

Orlando, Florida 32801

### Property Highlights

- 83,139± SF, 7-story office building
- Across the street from Lake Eola Park
- Spaces are already built out
- No pass-through expenses
- Free parking available
- On-site management
- Visitors parking area
- No hassles or hidden fees!

### AVAILABLE SPACES

Space	Lease Rate	Size (SF)
Suite 210	\$28.75 SF/yr	1,716 - 6,705
Suite 320	\$28.75 SF/yr	1,077
Suite 520	\$28.75 SF/yr	1,194



**Lease Rate: \$28.75 SF Full Service**

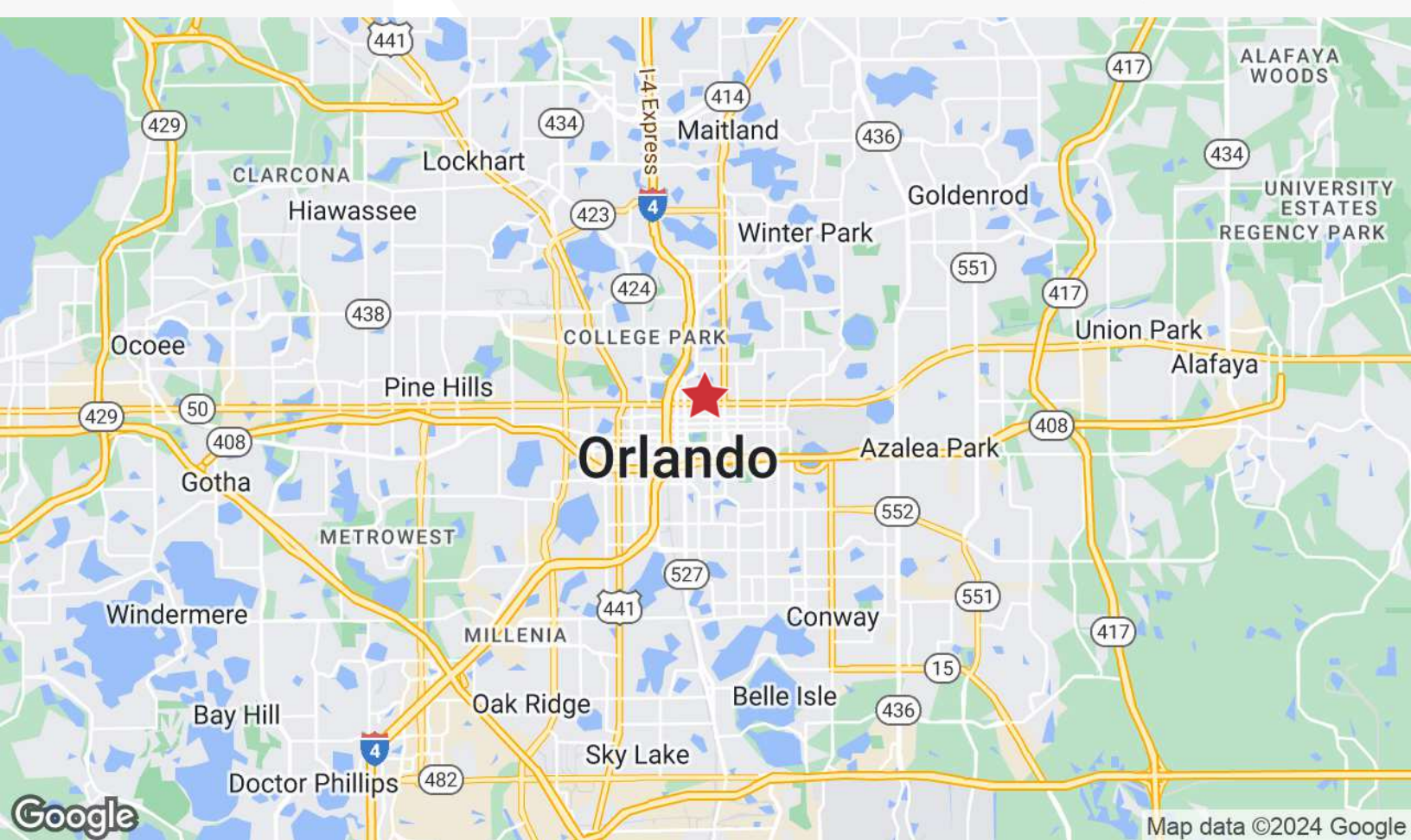
For more information

**Jeffrey Bloom, CCIM**

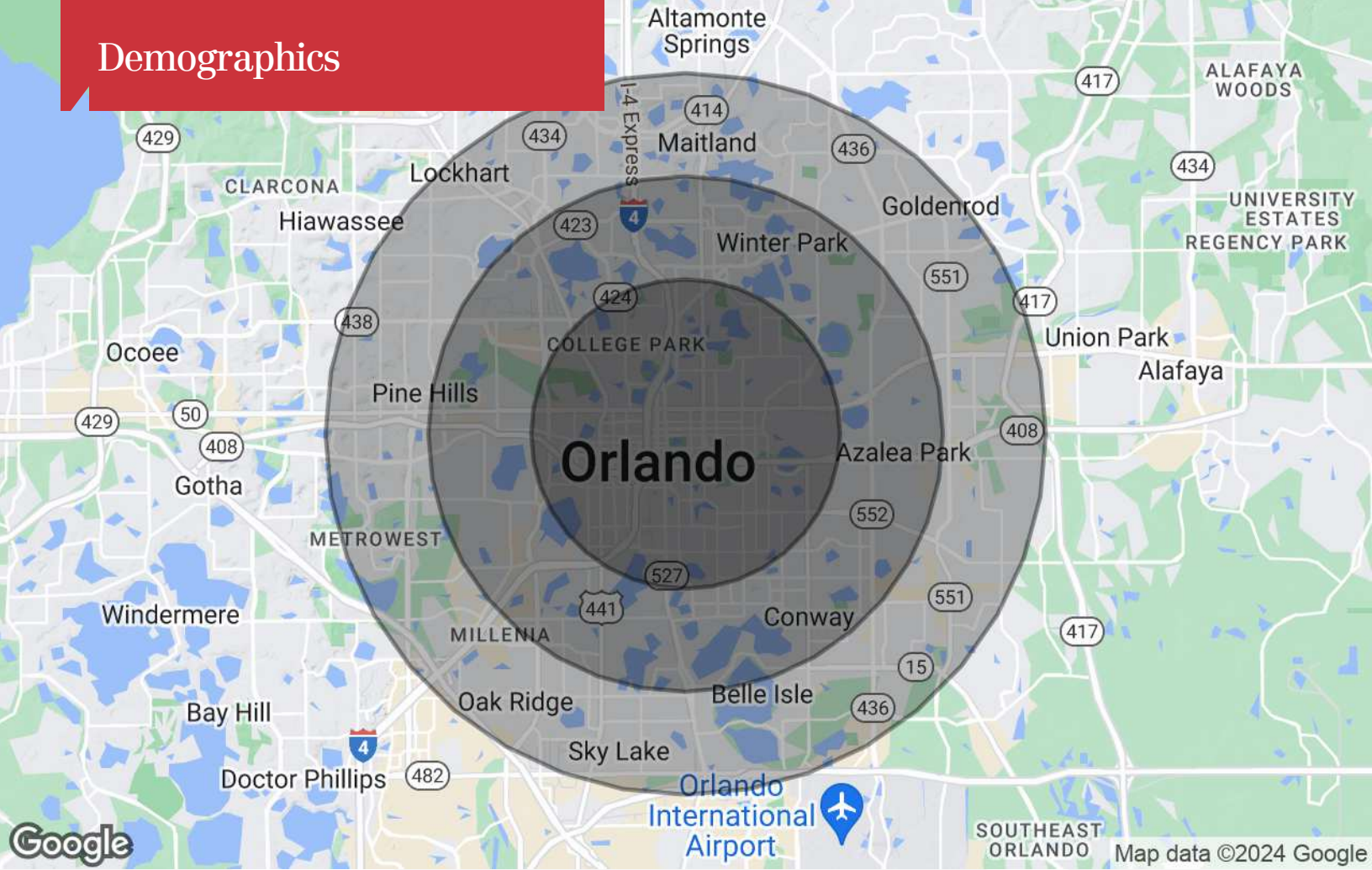
O: 407 949 0709

[jbloom@realvest.com](mailto:jbloom@realvest.com)

# Location Maps



# Demographics



## Population

	3 Miles	5 Miles	7 Miles
TOTAL POPULATION	97,710	280,846	608,935
MEDIAN AGE	38.6	38.0	36.4
MEDIAN AGE (MALE)	38.2	36.6	35.1
MEDIAN AGE (FEMALE)	39.2	39.6	38.1

## Households & Income

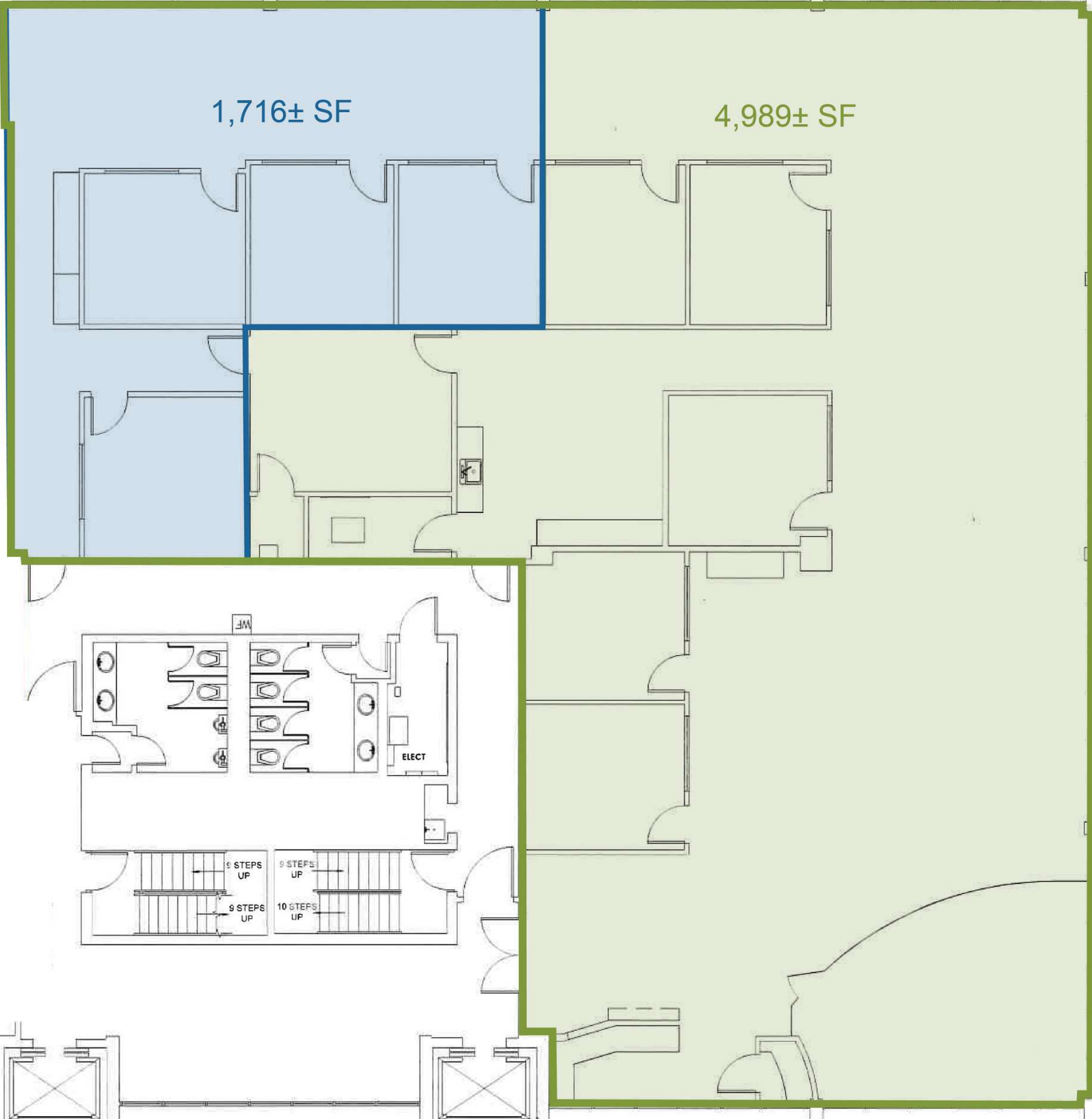
	3 Miles	5 Miles	7 Miles
TOTAL HOUSEHOLDS	52,021	132,370	262,833
# OF PERSONS PER HH	1.9	2.1	2.3
AVERAGE HH INCOME	\$87,187	\$73,394	\$65,656
AVERAGE HOUSE VALUE	\$289,697	\$252,220	\$209,573

\* Demographic data derived from 2020 ACS - US Census

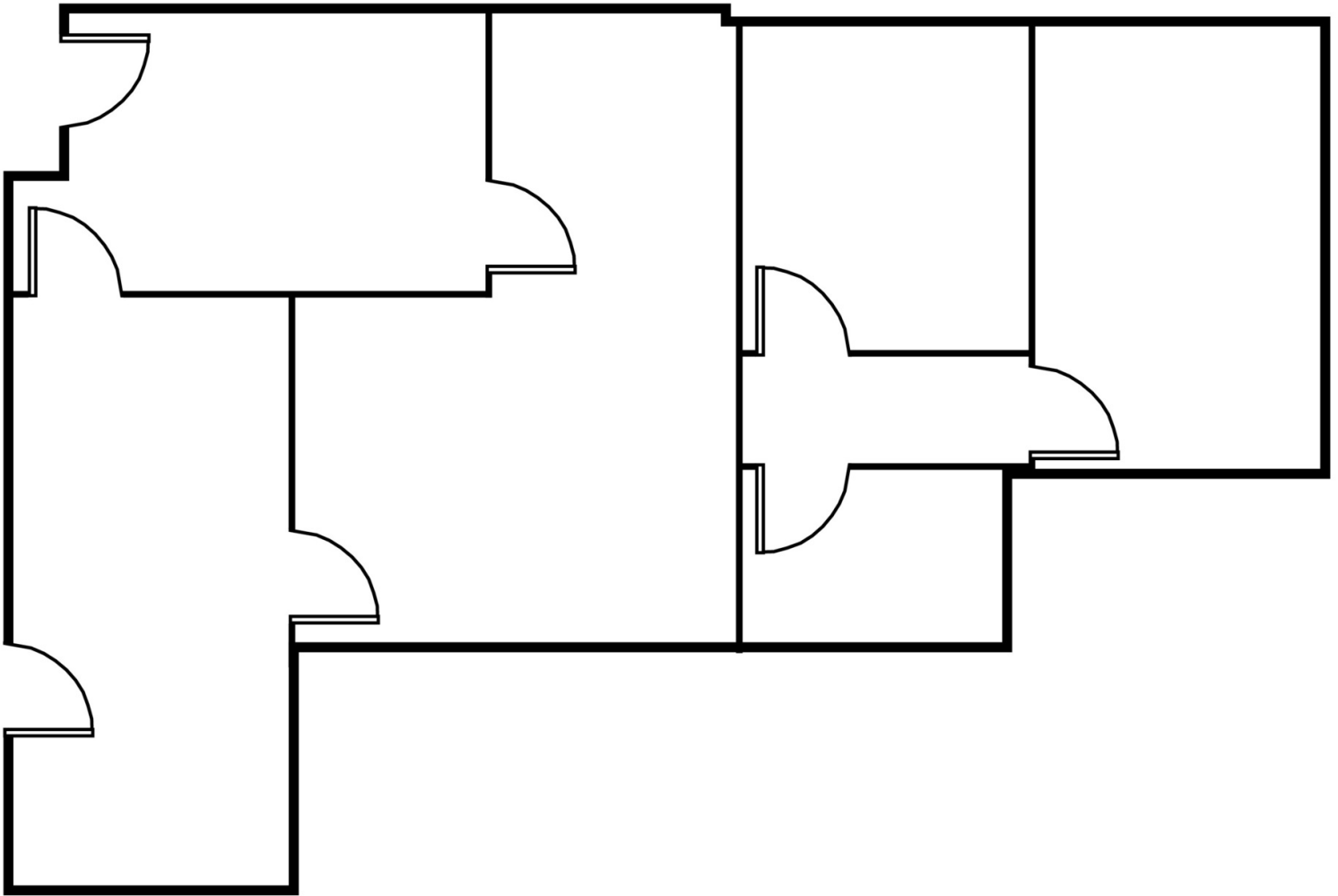
Suite 210 - 6,705± SF - Can Be Divided

1,716± SF

4,989± SF



Suite 320 - 1,077± SF



Suite 520 - 1,194± SF

