

MONROE COMMERCENTER

4200 CHURCH ST, SANFORD, FL 32771



FULLY HVAC WAREHOUSE

CONVENIENT ACCESS
TO INTERSTATE-4

10,926 SF AVAILABLE
FOR SUBLEASE

SPACE HIGHLIGHTS

ASKING RATE
NEGOTIABLE

OPEX**
\$3.05 PSF

SUBLEASE EXPIRATION
MAY 31, 2027

LOADING DOORS
(3) DOCK DOORS
(1) GRADE DOOR

PARKING RATIO
1.84/1,000

CLEAR HEIGHT
24'

ELECTRICAL SPECS
3-PHASE

YEAR BUILT
2003

ZONING
PCD

AVAILABILITY
30 DAYS

**Sales Tax Included
**Denotes Estimated Operating Expenses for 2024*

CONTACT INFORMATION

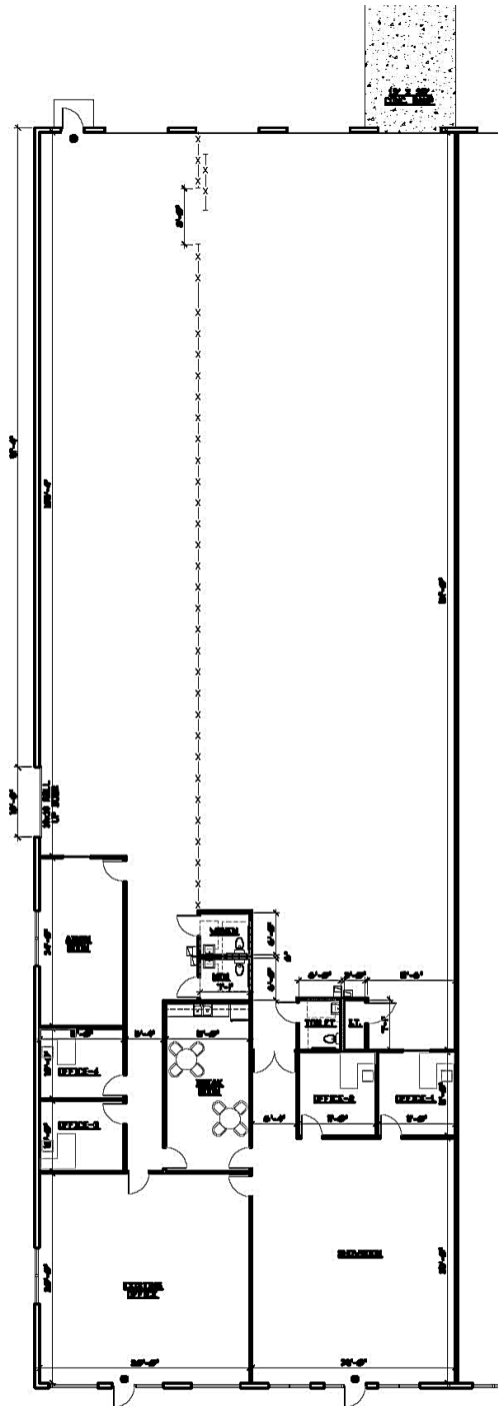
TAYLOR ZAMBITO
Senior Director
+1 407 541 4409
taylor.zambito@cushwake.com

RYAN HUBBARD
Director
+1 407 541 4390
ryan.hubbard@cushwake.com



SUITE 1066

4200 CHURCH ST, SANFORD, FL 32771



CONTACT INFORMATION

TAYLOR ZAMBITO

Senior Director
+1 407 541 4409
taylor.zambito@cushwake.com

RYAN HUBBARD

Director
+1 407 541 4390
ryan.hubbard@cushwake.com

