

For Lease

# Lee World Center

206 - 1,992 SF | \$25.50 / SF



## 1850 Lee Road

Winter Park, Florida 32789

### Property Highlights

- 136,747± SF, three-story office building with 2 elevators
- Full-service building with ample parking: 242 spaces on 3.14± acre site
- 24-hour access with evening building attendant
- Great location midway between I-4 and US Hwy 17-92; only 2 minutes to I-4 on-ramp
- Very close to Winter Park Village and downtown Winter Park
- Close to restaurants, banks and shopping
- Zoning: O-1 (Office)
- Easy access to Lee Road, I-4, US Hwy 17-92, Morse Blvd, Fairbanks Avenue and Orange Avenue

### AVAILABLE SPACES

Space	Size (RSF)
Suite 111	650
Suite 122C	206
Suite 122D	362
Suite 134	1,992
Suite 210	783
Suite 250	1,819
Suite 306	729
Suite 309	1,111
Suite 322	629
Suite 324/325	841

**Lease Rate: \$25.50/SF Full Service**

For more information

**Jeffrey Bloom, CCIM**

O: 407 949 0709

[jbloom@realvest.com](mailto:jbloom@realvest.com)

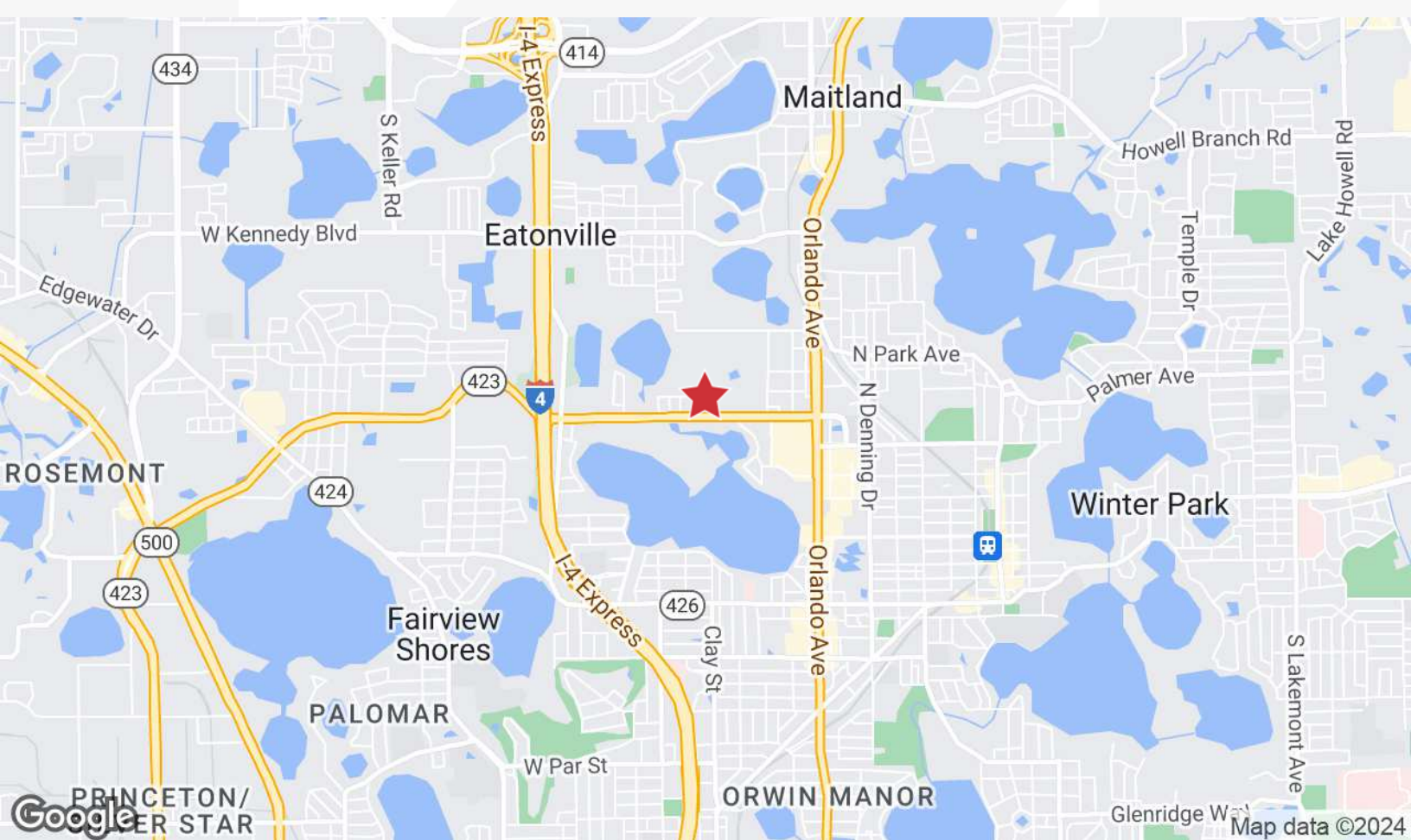
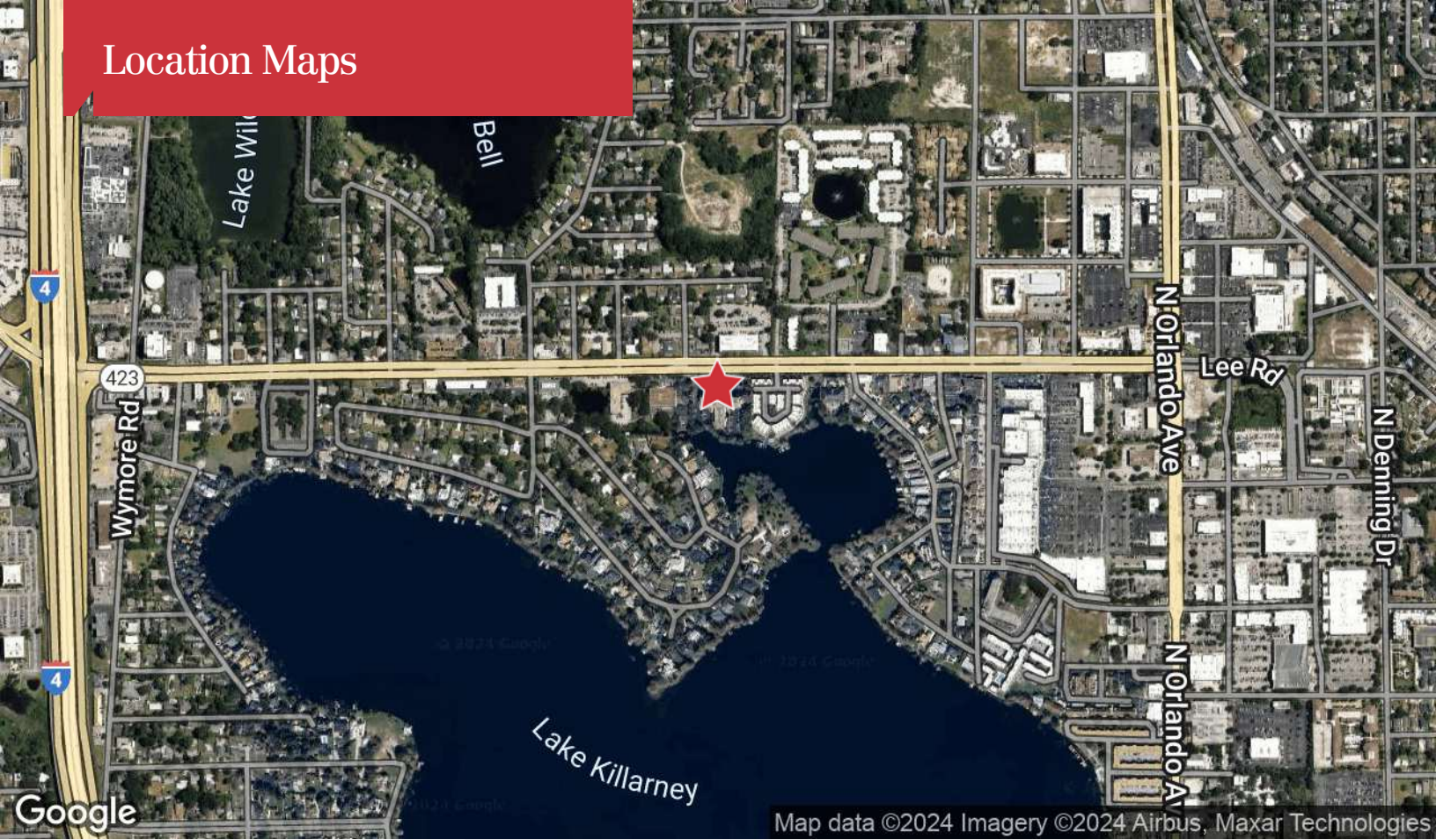


# Property Photos





# Location Maps



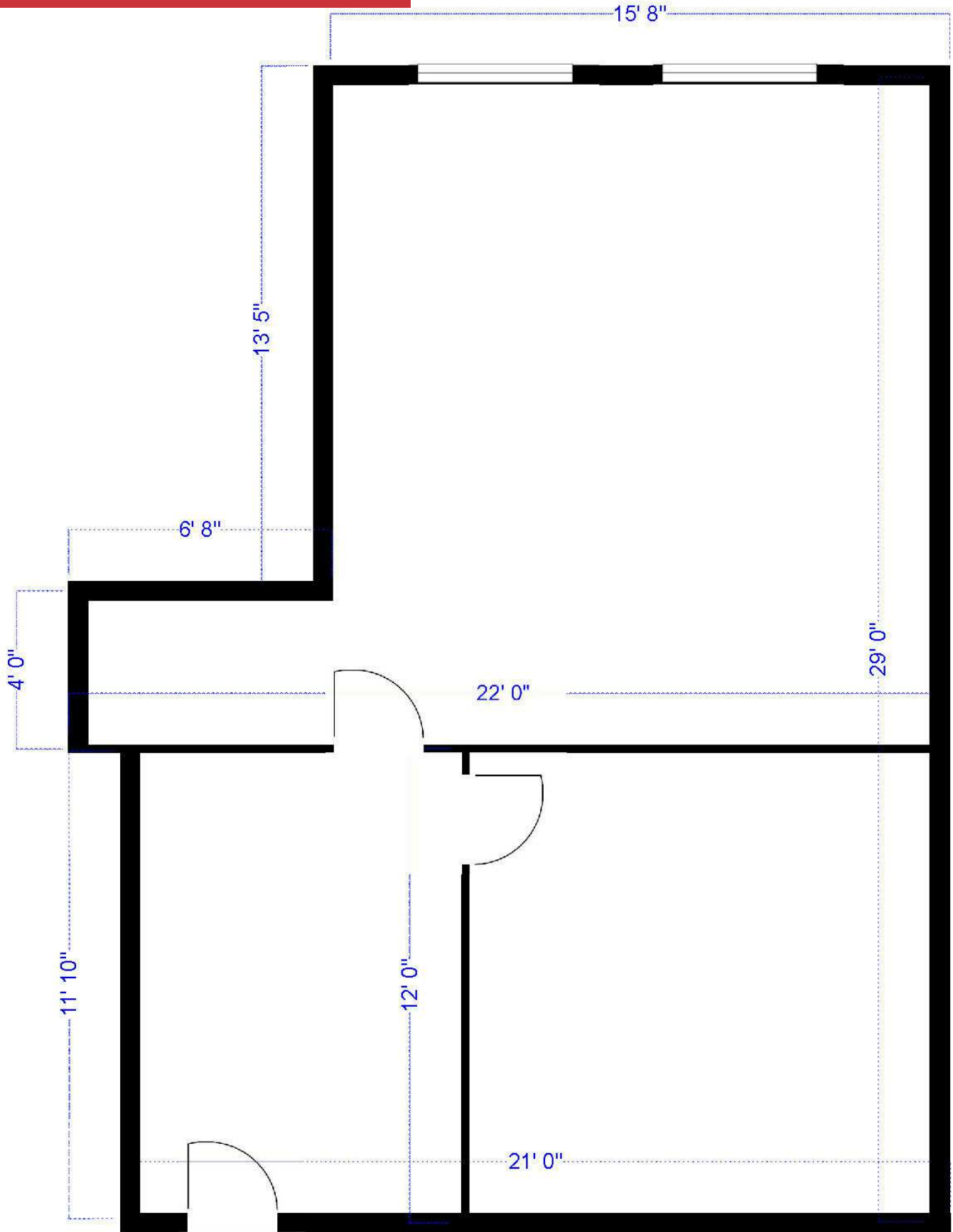
The information contained herein has been given to us by the owner of the property or other sources we deem reliable. We have no reason to doubt its accuracy, but we do not guarantee it. All information should be verified prior to purchase or lease. Unless otherwise noted, the property is being offered as-is, where is, with all faults.

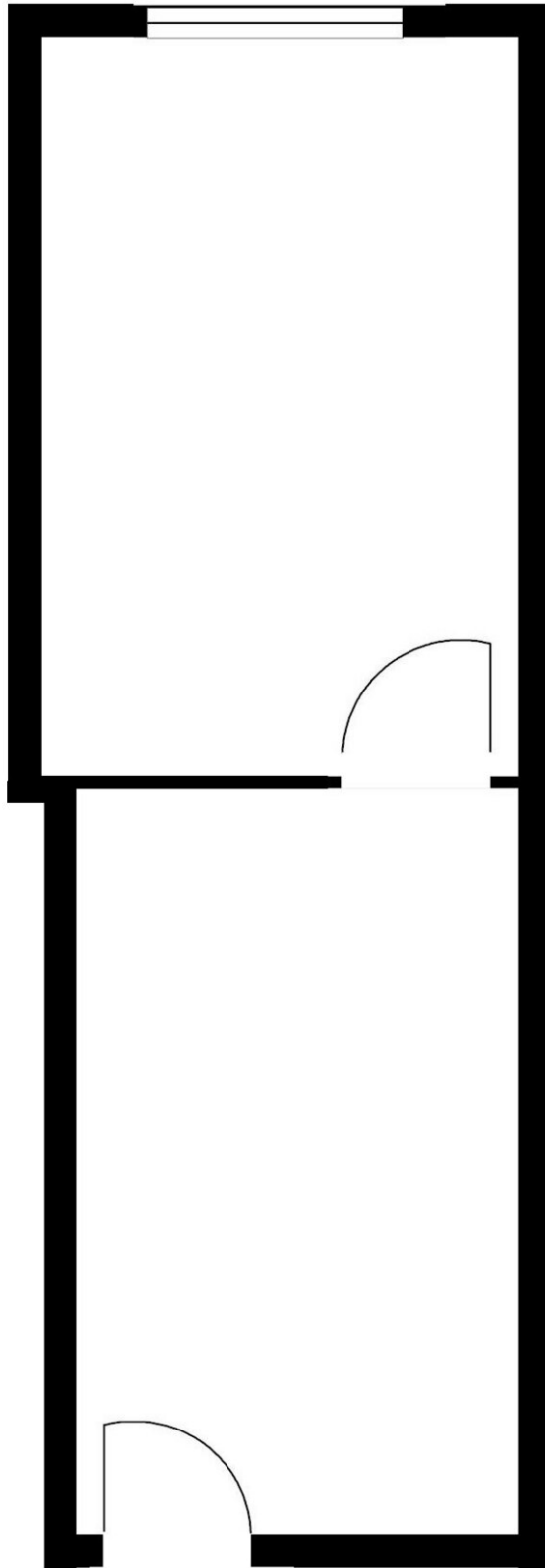
1800 Pembroke Drive, Suite 350  
Orlando, FL 32810  
407 875 9989 tel  
[nairealvest.com](http://nairealvest.com)

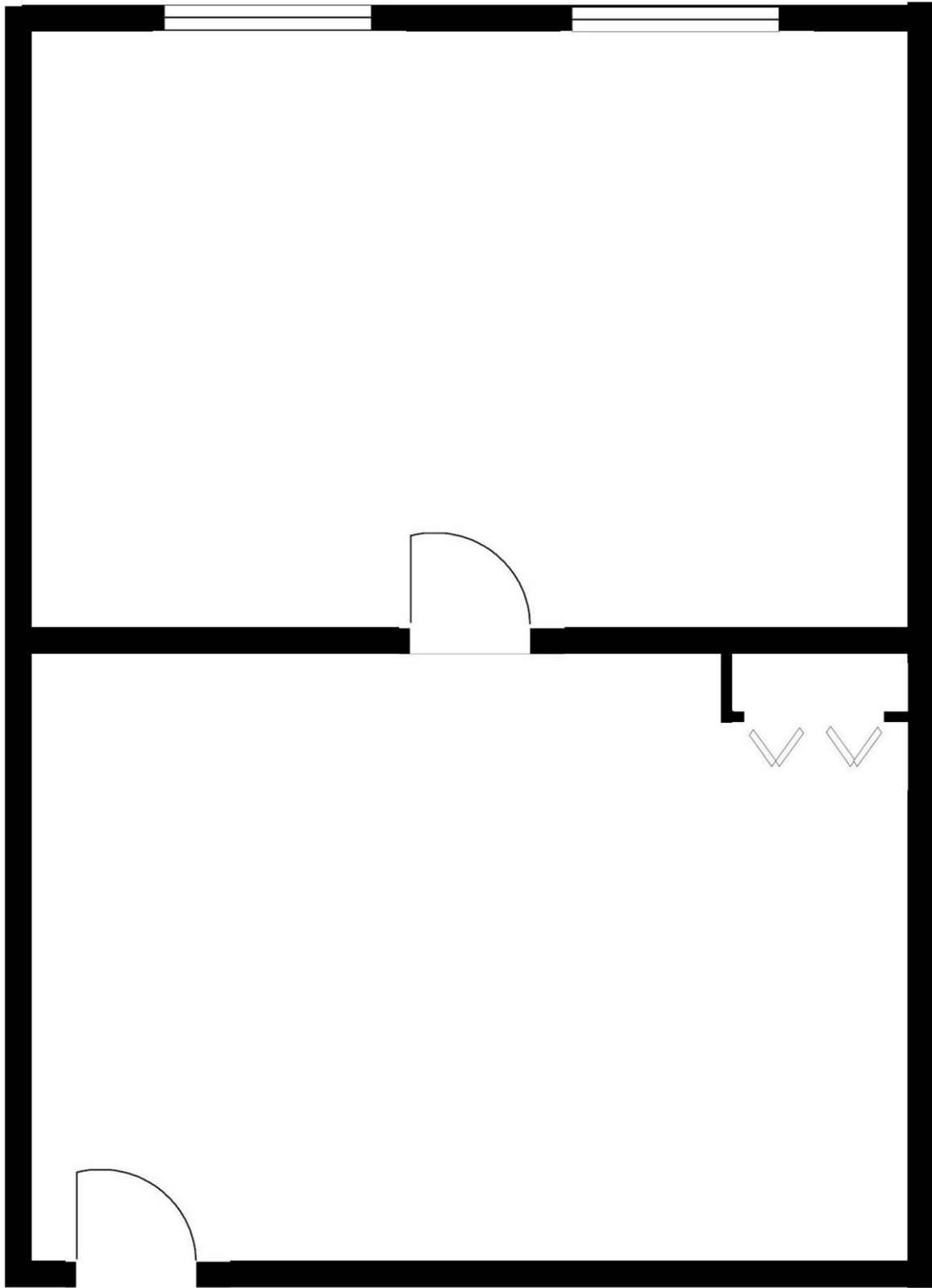




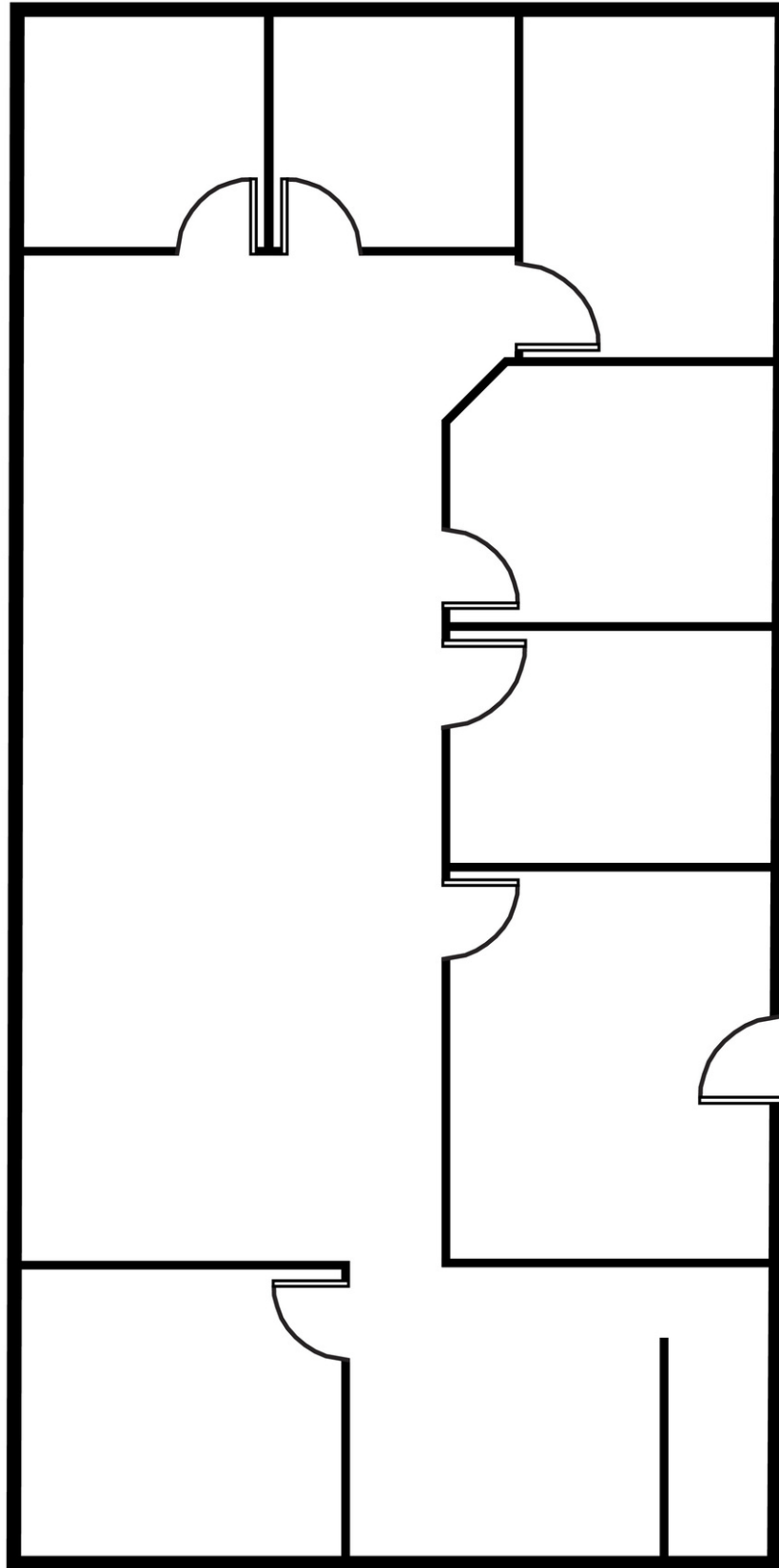
# Suite 111 - 650± RSF





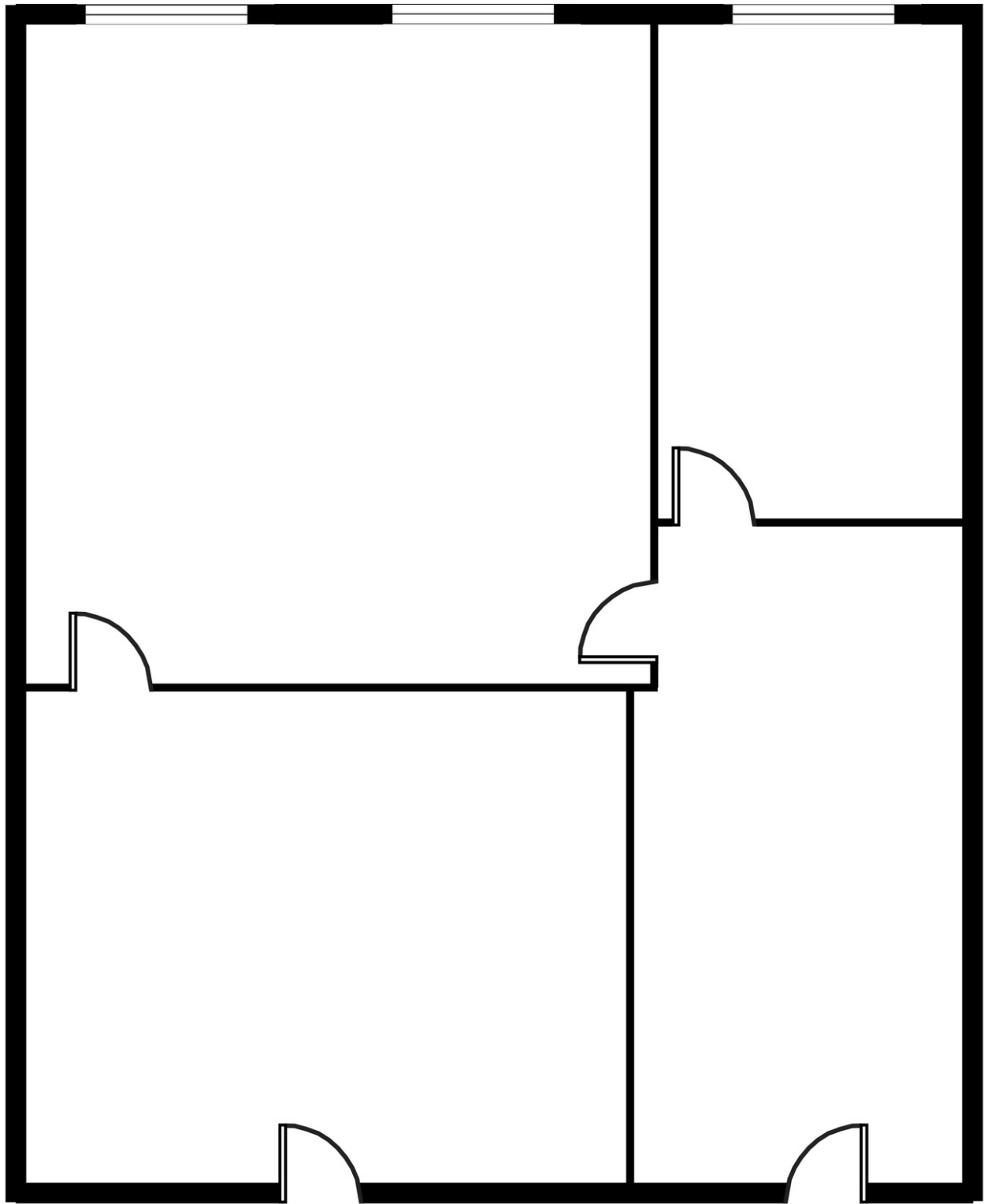


Suite 134 - 1,992 SF

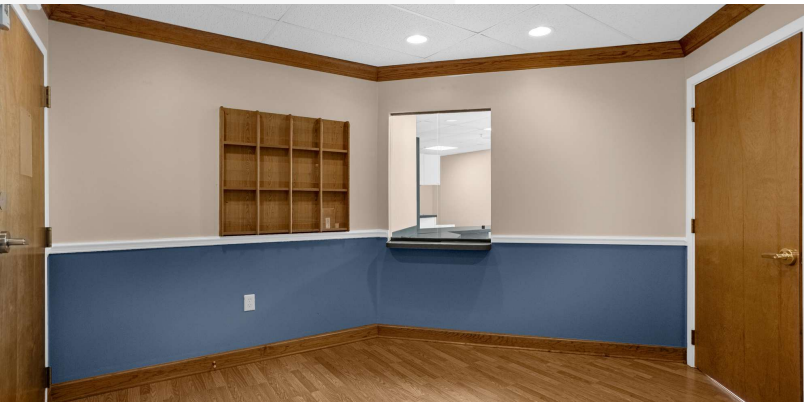
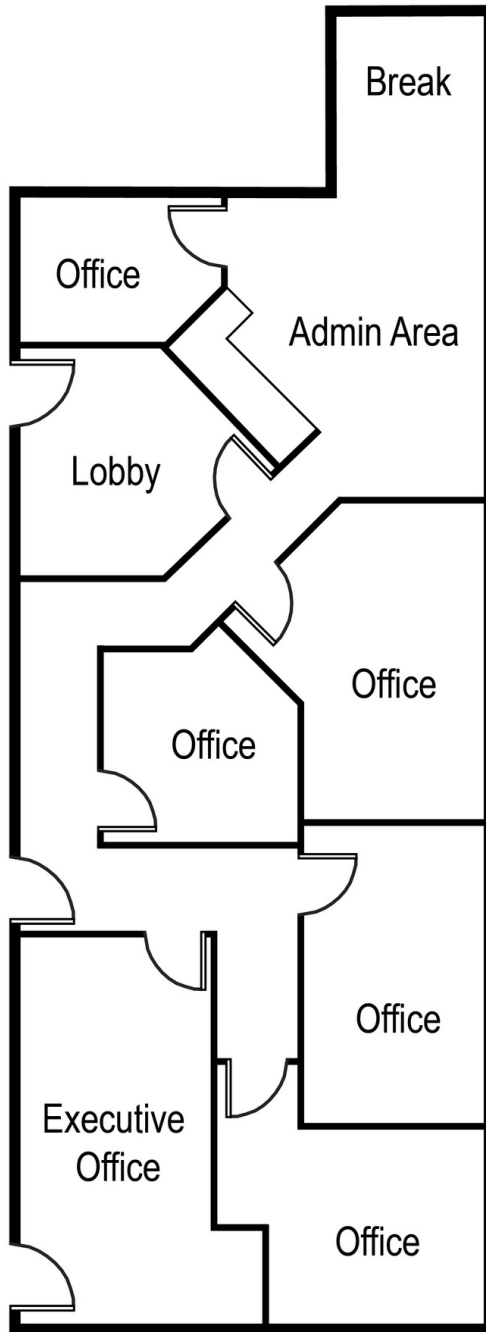




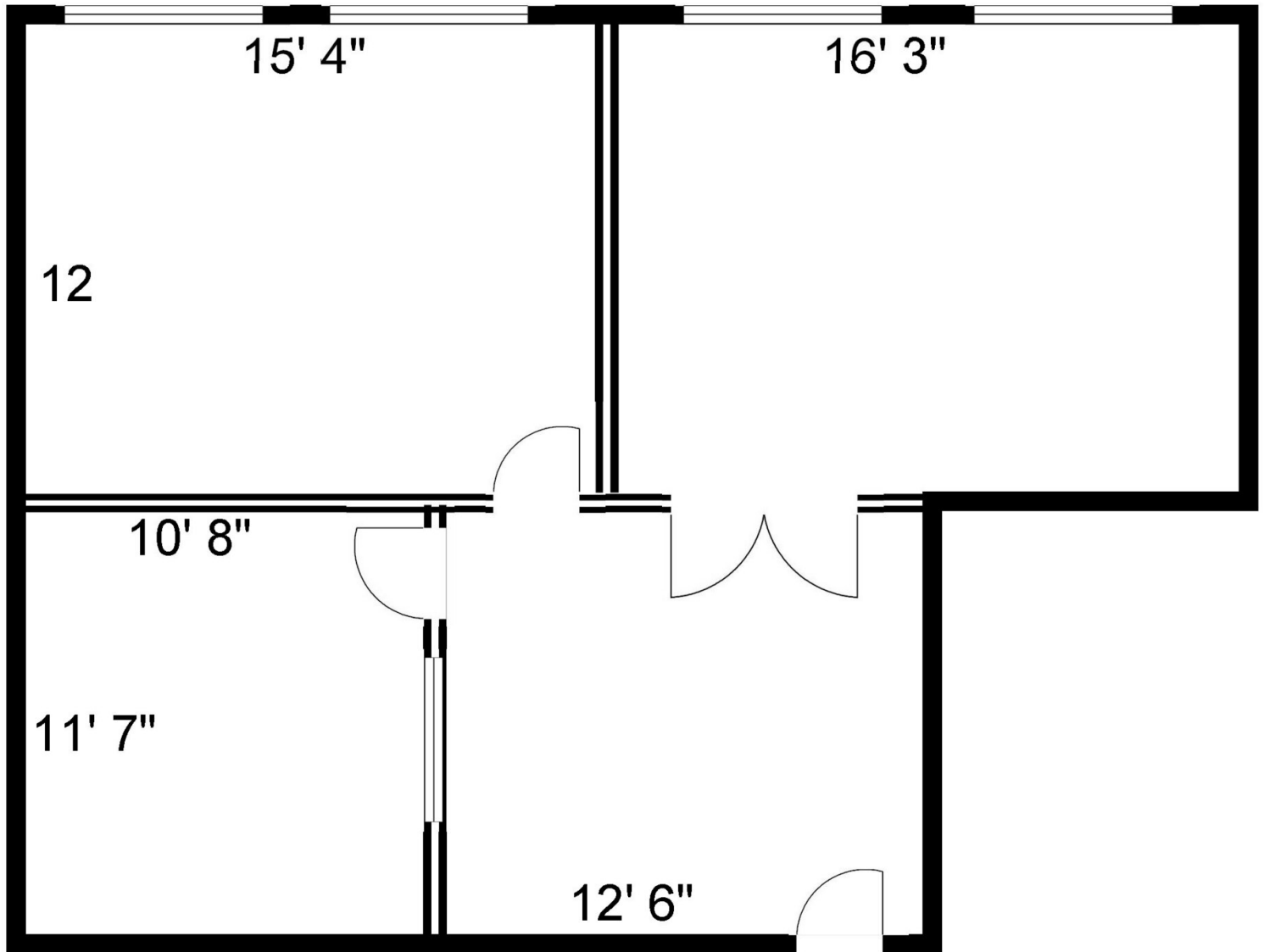
Suite 210 - 783± SF



Suite 250 - 1,819± RSF







Suite 309 - 1,111± RSF

