

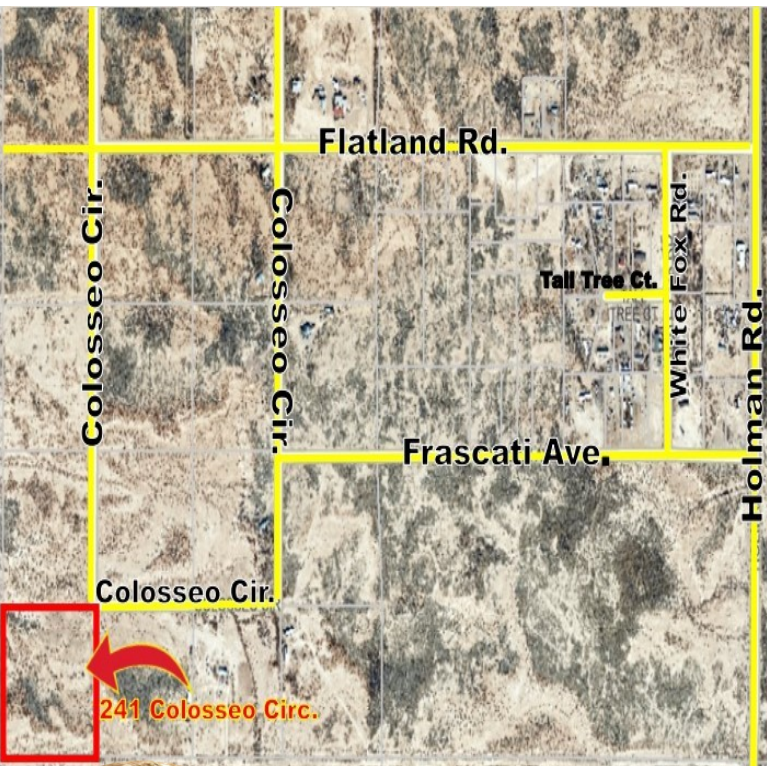
10 Acres of Land, Build your Dream Home and Enjoy Nature!

241 Colosseo Circle Las Cruces NM 88012 **125,000**

10 Acres of land to enjoy nature, horses allowed, beautiful view of the mountains, access to Holman Rd, to Highway 70 schools and stores about 25 minutes to downtown Las Cruces. No utilities inside the land, electric and water on the street, Buyer to bring those to the land.



Click for Photos!



www.ErnestoUranga.com euranga@international1realtor.com

575-644-7254

2805 Doral Ct., Las Cruces, NM 88011
O: 575-524-8788

Ernesto URANGA



HOME | MULTI-FAMILY | LAND | COMMERCIAL | DEVELOPMENT | INVESTMENT | 1031 EXCHANGE

Disclaimer: All information deemed reliable but not guaranteed. All properties are subject to prior sale, change or withdrawal. Neither listing broker(s) or information provider(s) shall be responsible for any typographical errors, misinformation, misprints and shall be held totally harmless. Listing(s) information is provided for consumers personal, non-commercial use and may not be used for any purpose other than to identify prospective properties consumers may be interested in purchasing. Each office is independently owned and operated.