

Oakwood Square

1900-1970 Dairy Road, West Melbourne, FL 32904

Office, Medical and Retail Space in the Heart of West Melbourne



OFFERING SUMMARY

Available SF: 1,545 - 2,184 SF

Lease Rate: \$15.00 SF/yr (NNN)

Acreage: 4.4 Acres

Facility SF: 46,884 SF

Zoning: City of West Melbourne
Commercial New Haven
(C-NH)

PROPERTY OVERVIEW

Oakwood Square is a three building office, medical and light retail complex with a variety of unit sizes available for lease. Ample parking throughout the complex. Space available from 1,545 sf up to 2,184 sf. Base rent starts at \$15.00 per SF plus est. \$2.57/sf CAM.

LOCATION OVERVIEW

Easy access to all of Melbourne, Palm Bay, Beaches and surrounding communities via Interstate 95, US 192, and US 1. From open space to multi-office there are numerous configurations to choose from.

PROPERTY HIGHLIGHTS

- Great location in the heart of W. Melbourne on Dairy Road
- All roofs replaced in 2016 and buildings painted in 2018.
- Parking lot resurfaced in 2022.
- Excellent value priced office space!
- Several types and sizes of units available immediately
- Interiors to include new carpet and painting

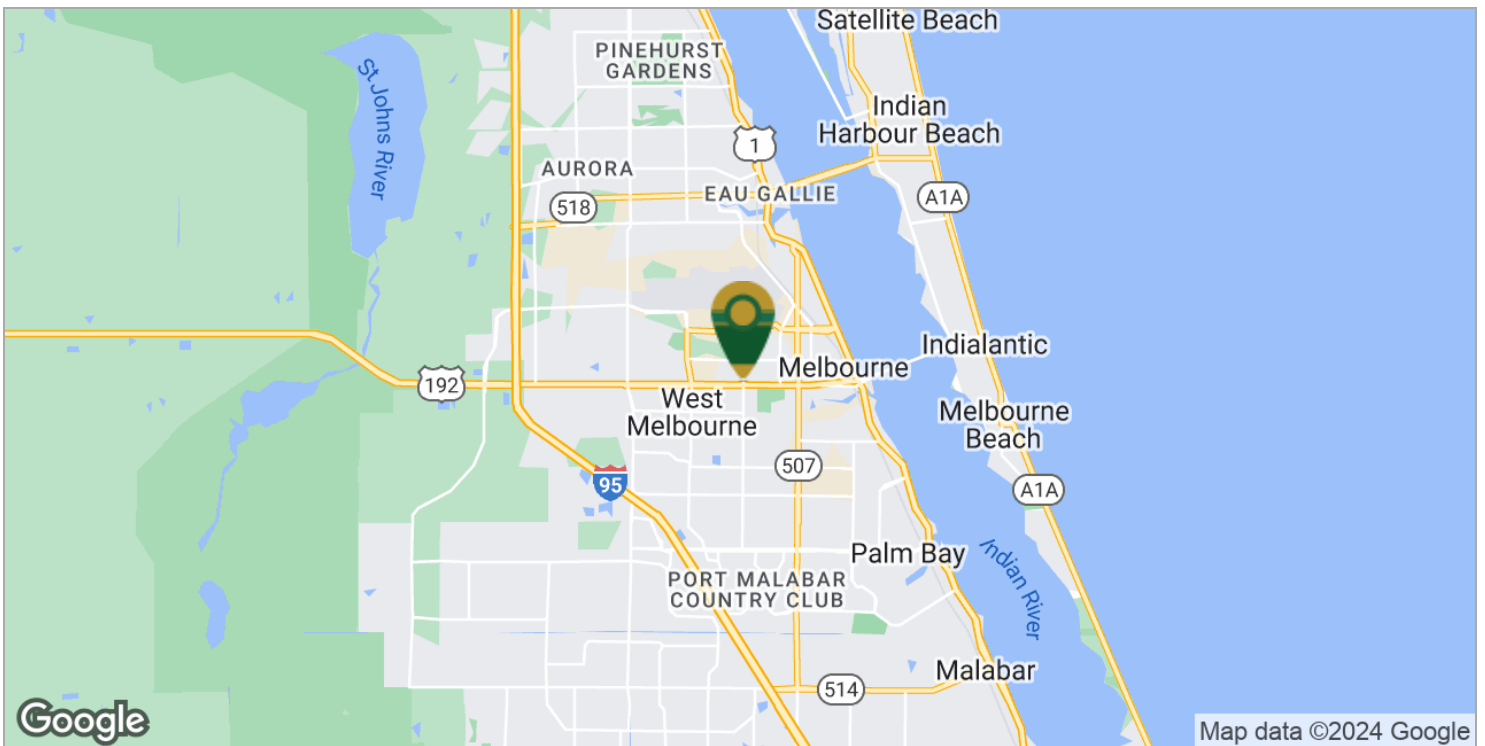
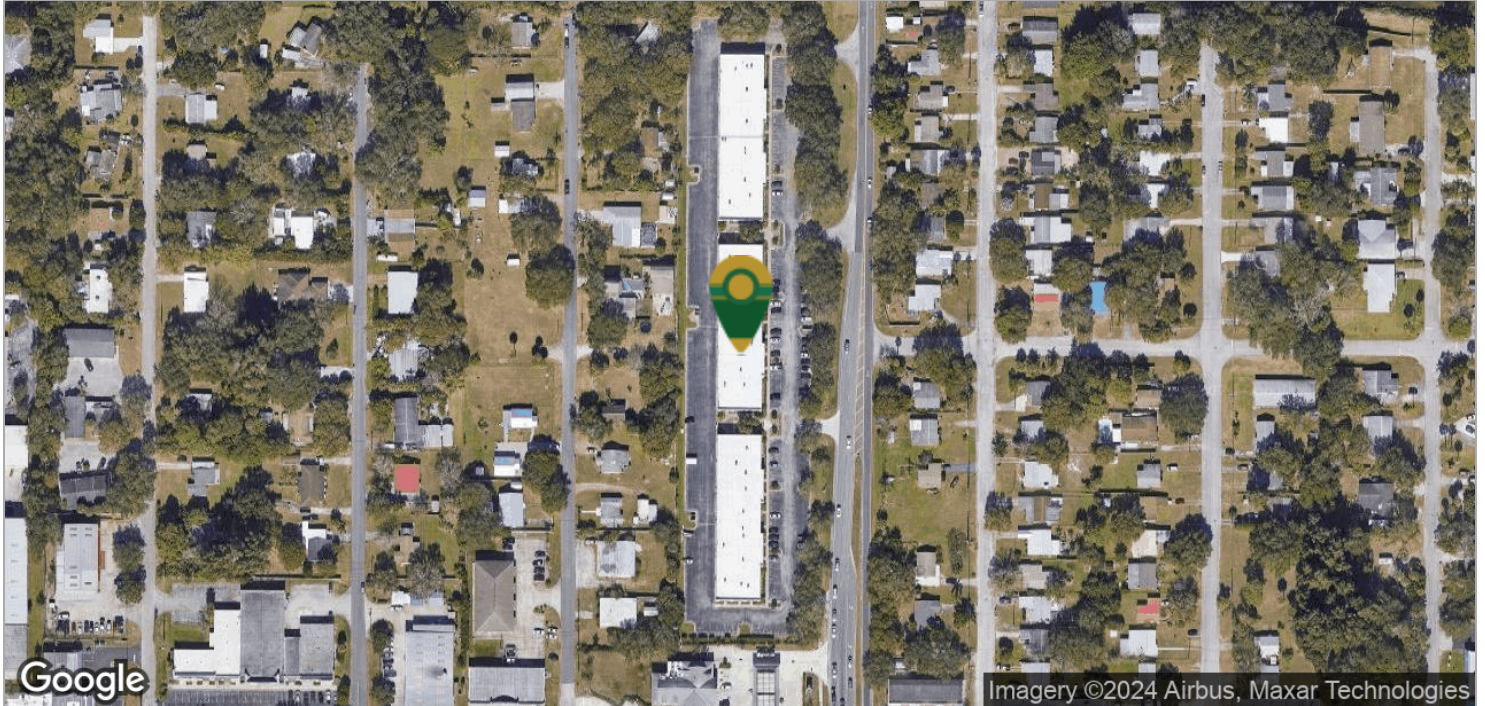
Zachary Ullian

Broker Associate
Cell: 321.750.3439
zach@ullianrealty.com

Oakwood Square

1900-1970 Dairy Road, West Melbourne, FL 32904

Location Maps



Zachary Ullian

Broker Associate

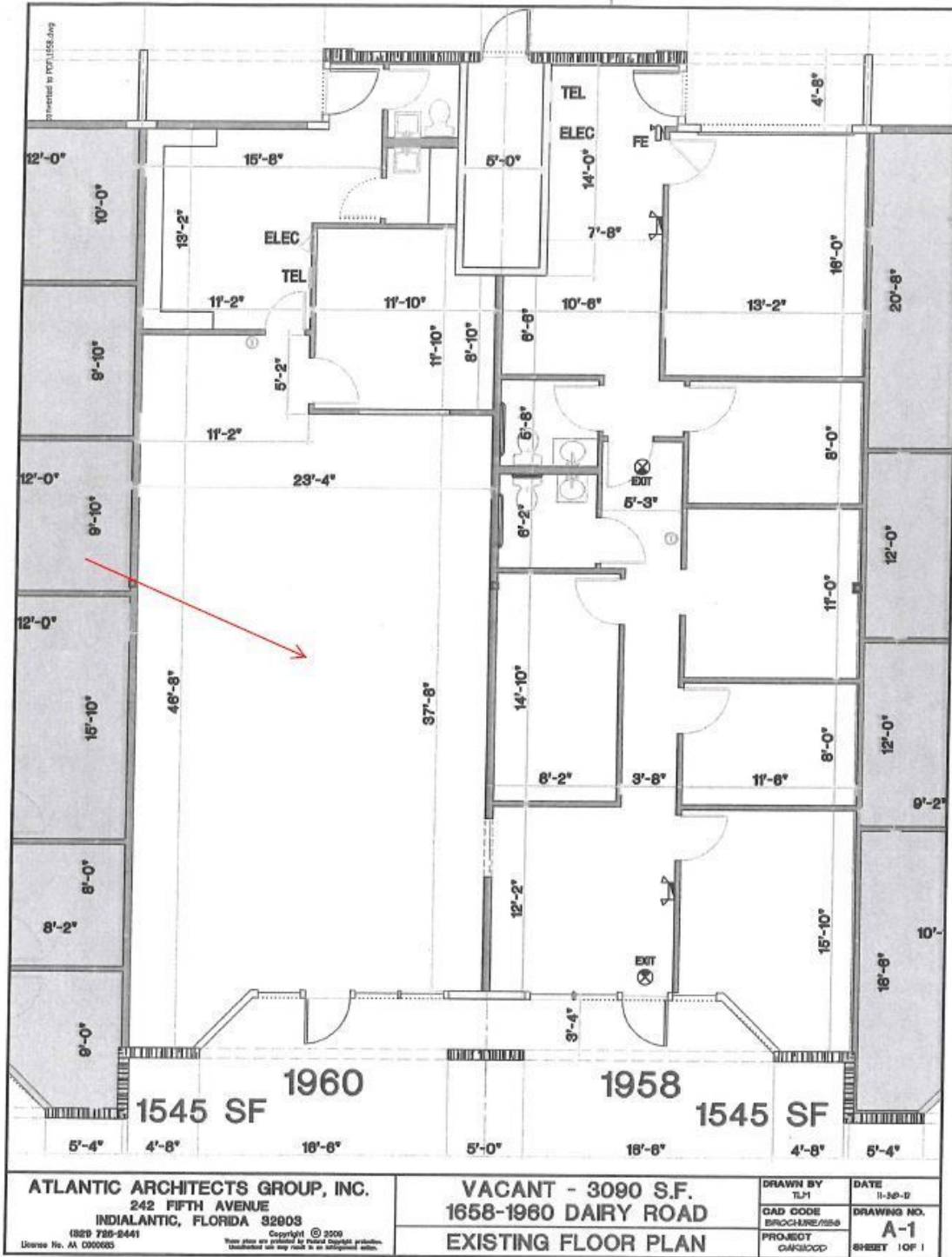
Cell: 321.750.3439

zach@ullianrealty.com

Oakwood Square

1900-1970 Dairy Road, West Melbourne, FL 32904

1960 Floor Plan (1,545 SF)



Zachary Ullian

Broker Associate

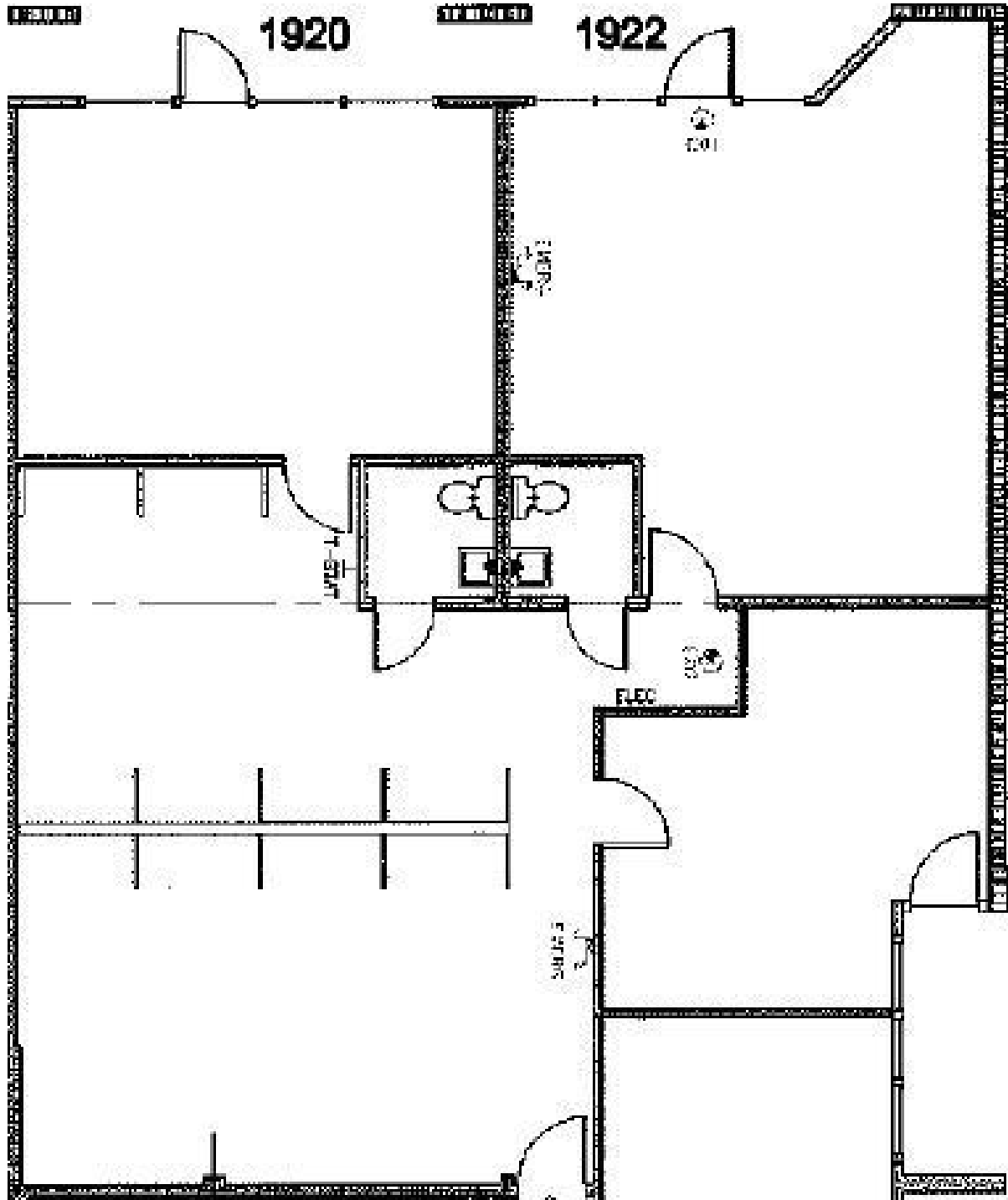
Cell: 321.750.3439

zach@ullianrealty.com

Oakwood Square

1900-1970 Dairy Road, West Melbourne, FL 32904

1920-1922 Floor Plan (2,184 SF)



Zachary Ullian

Broker Associate

Cell: 321.750.3439

zach@ullianrealty.com