



## Property Highlights

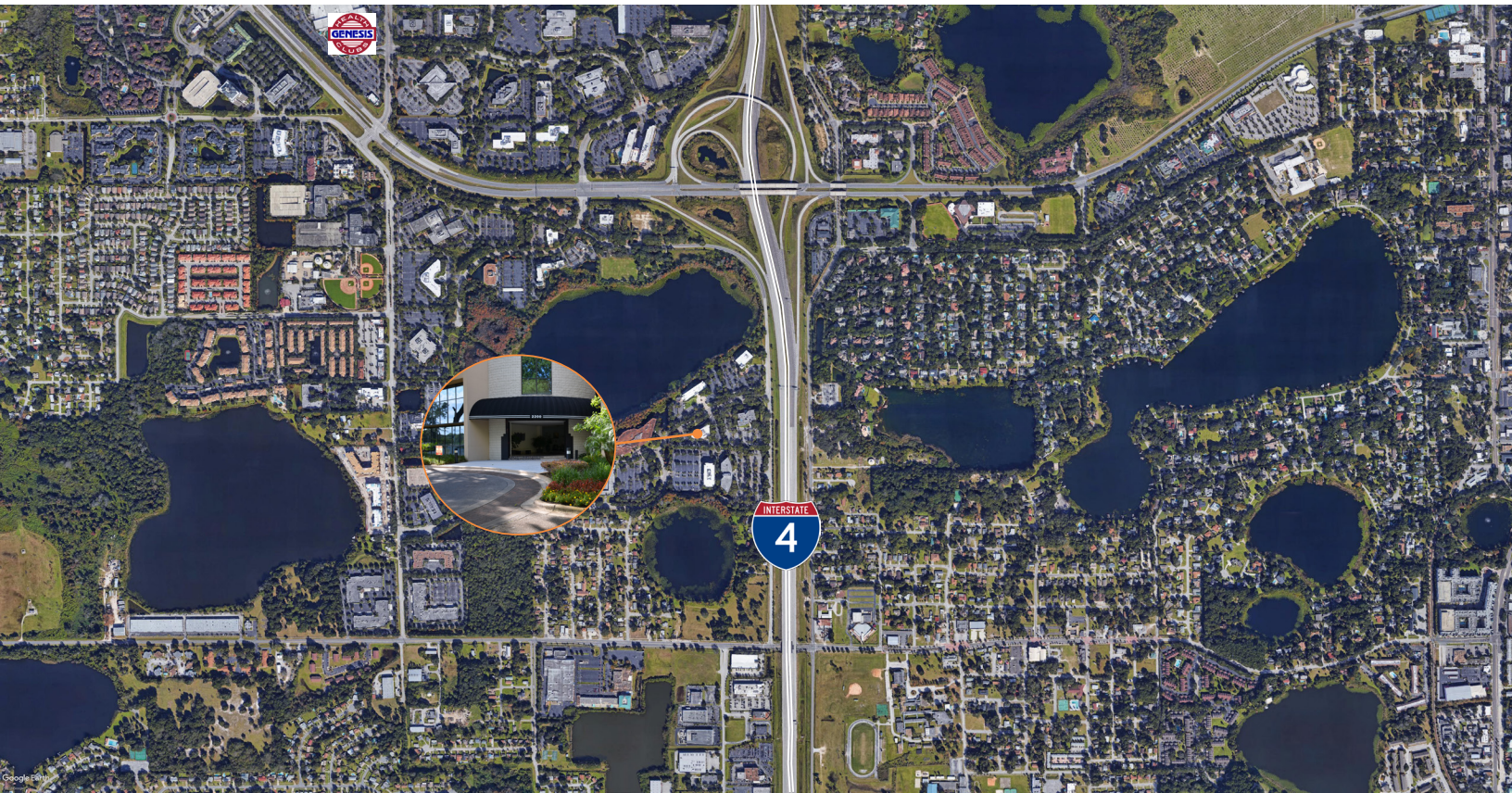
- 4-story class B office building totaling 59,798± sf
- 1,830± sf - 10,102± sf available
- Renovated lobby with seating
- Shared building conference room available to tenants
- Visible from Interstate-4
- Minutes to Downtown Orlando
- Nearby amenities include the Genesis Health Club, Sam Snead's Tavern and other restaurants
- Abundant parking

**Emily Zinaich**, Senior Vice President  
D 407 440 6641  
C 407 230 8797  
emily.zinaich@avisonyoung.com

**AVISON  
YOUNG**

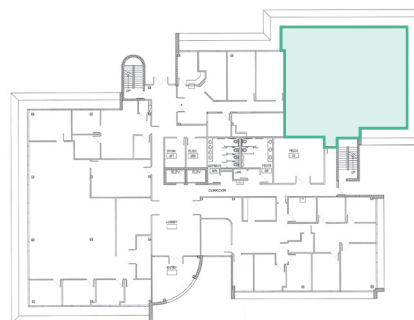
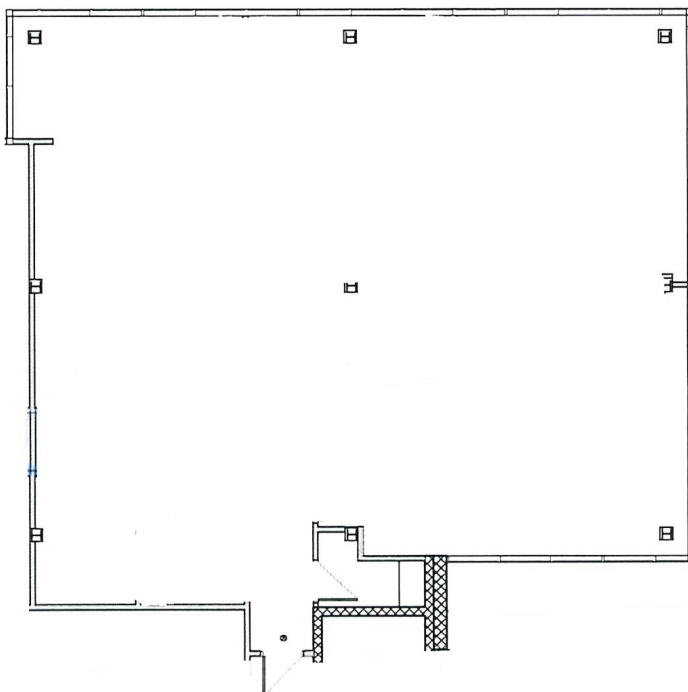
# For Lease Lake Lucien Executive Center

2200 Lucien Way  
Maitland, FL 32751



**Emily Zinaich**, Senior Vice President  
D 407 440 6641  
C 407 230 8797  
[emily.zinaich@avisonyoung.com](mailto:emily.zinaich@avisonyoung.com)

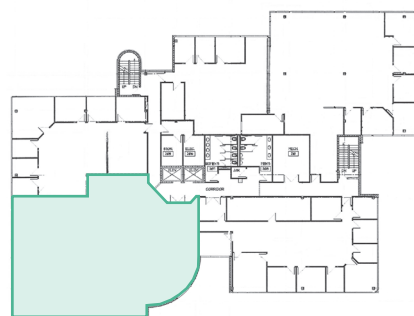
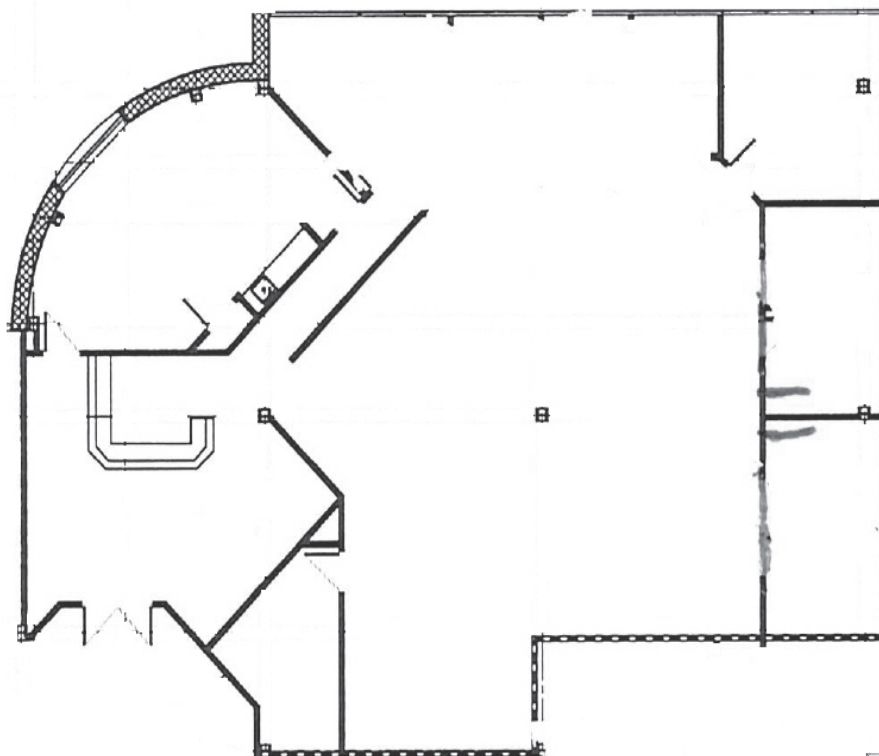
**Suite 135 - 2,725± rsf**



**KEY PLAN**

**Emily Zinaich**, Senior Vice President  
D 407 440 6641  
C 407 230 8797  
emily.zinaich@avisonyoung.com

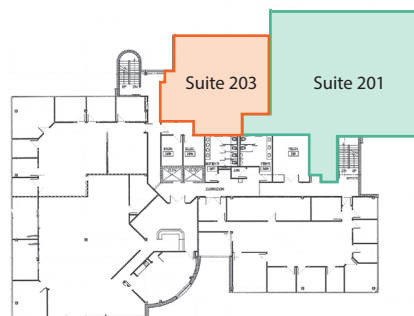
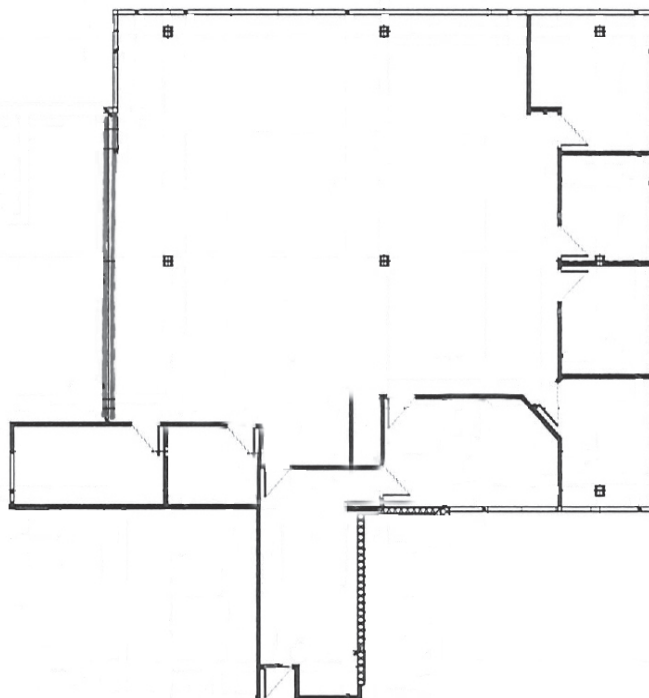
**Suite 200 - 4,546± sf**



**KEY PLAN**

**Emily Zinaich**, Senior Vice President  
D 407 440 6641  
C 407 230 8797  
emily.zinaich@avisonyoung.com

**Suite 201 - 3,643± sf**



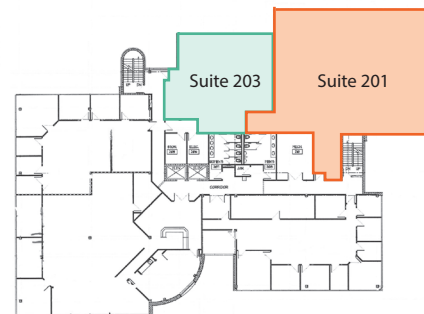
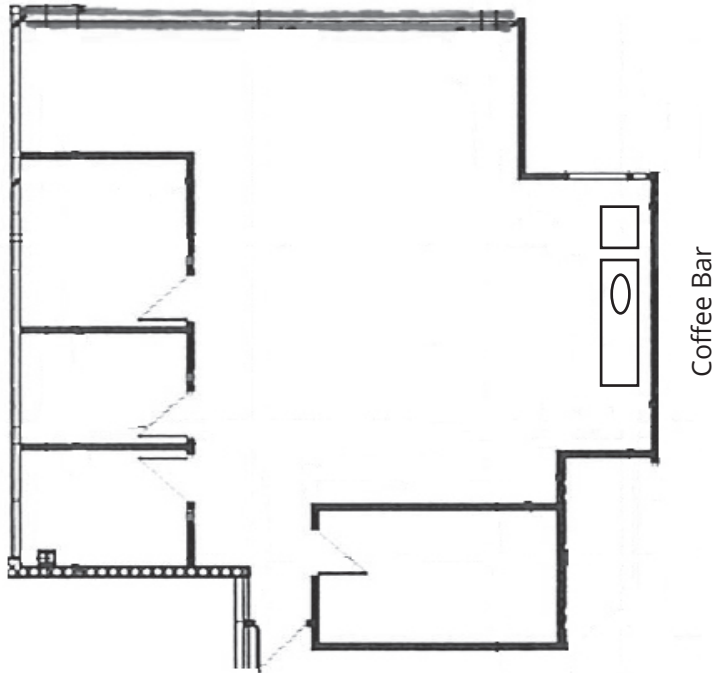
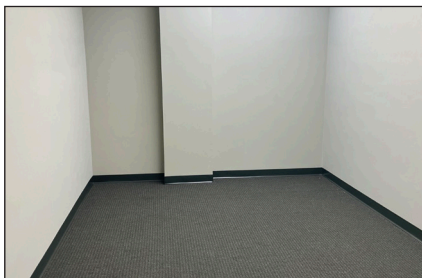
**KEY PLAN**

**Emily Zinaich**, Senior Vice President  
D 407 440 6641  
C 407 230 8797  
emily.zinaich@avisonyoung.com

**Suite 203 - 1,830± sf**

**Move-In Ready Suite**

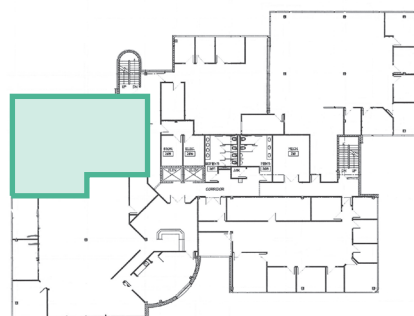
- New ceiling tiles, LED lighting and coffee bar
- Existing Conference Room and private offices
- Open area



**KEY PLAN**

**Emily Zinaich**, Senior Vice President  
D 407 440 6641  
C 407 230 8797  
emily.zinaich@avisonyoung.com

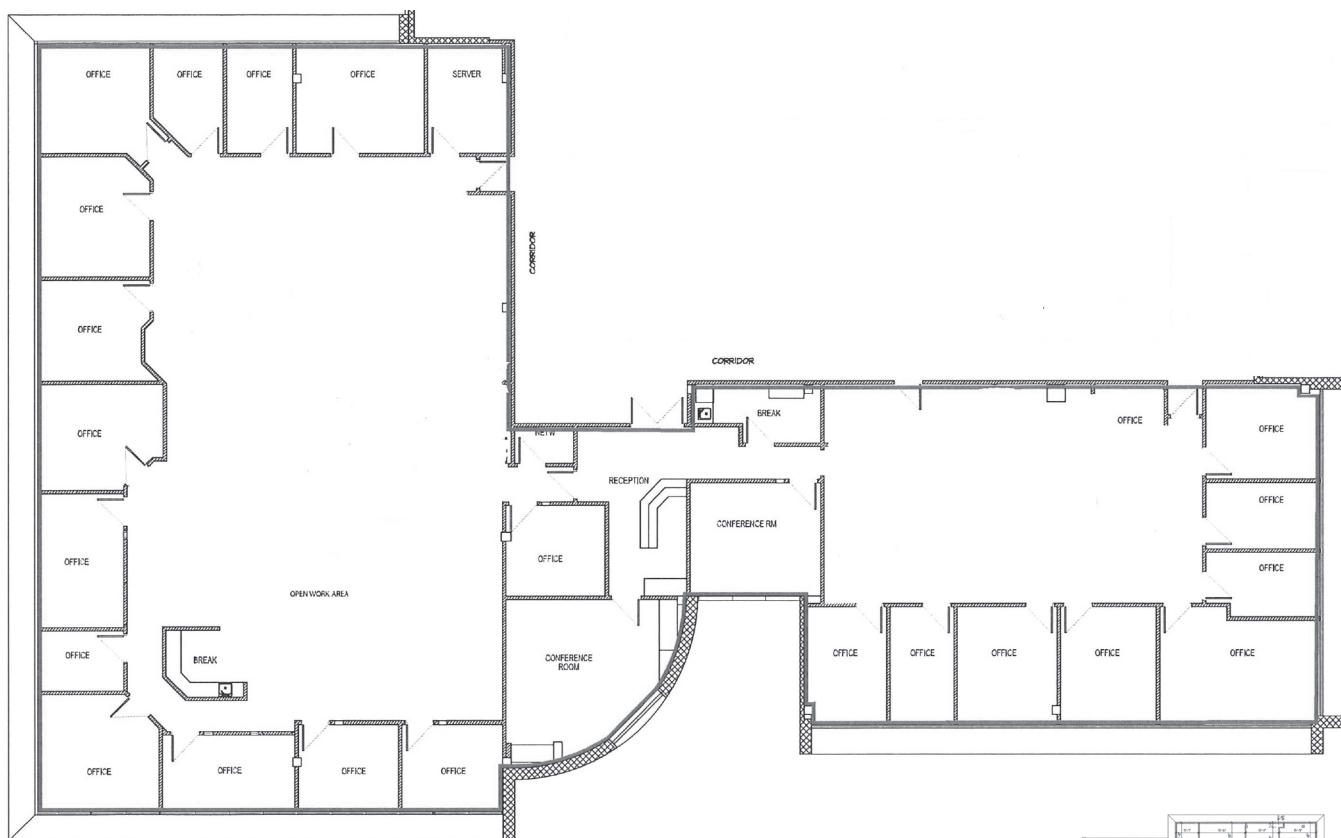
**Suite 205 - 2,465± sf**  
**Available July 1, 2024**



**KEY PLAN**

**Emily Zinaich**, Senior Vice President  
D 407 440 6641  
C 407 230 8797  
emily.zinaich@avisonyoung.com

**Suite 350 - 10,102± sf**

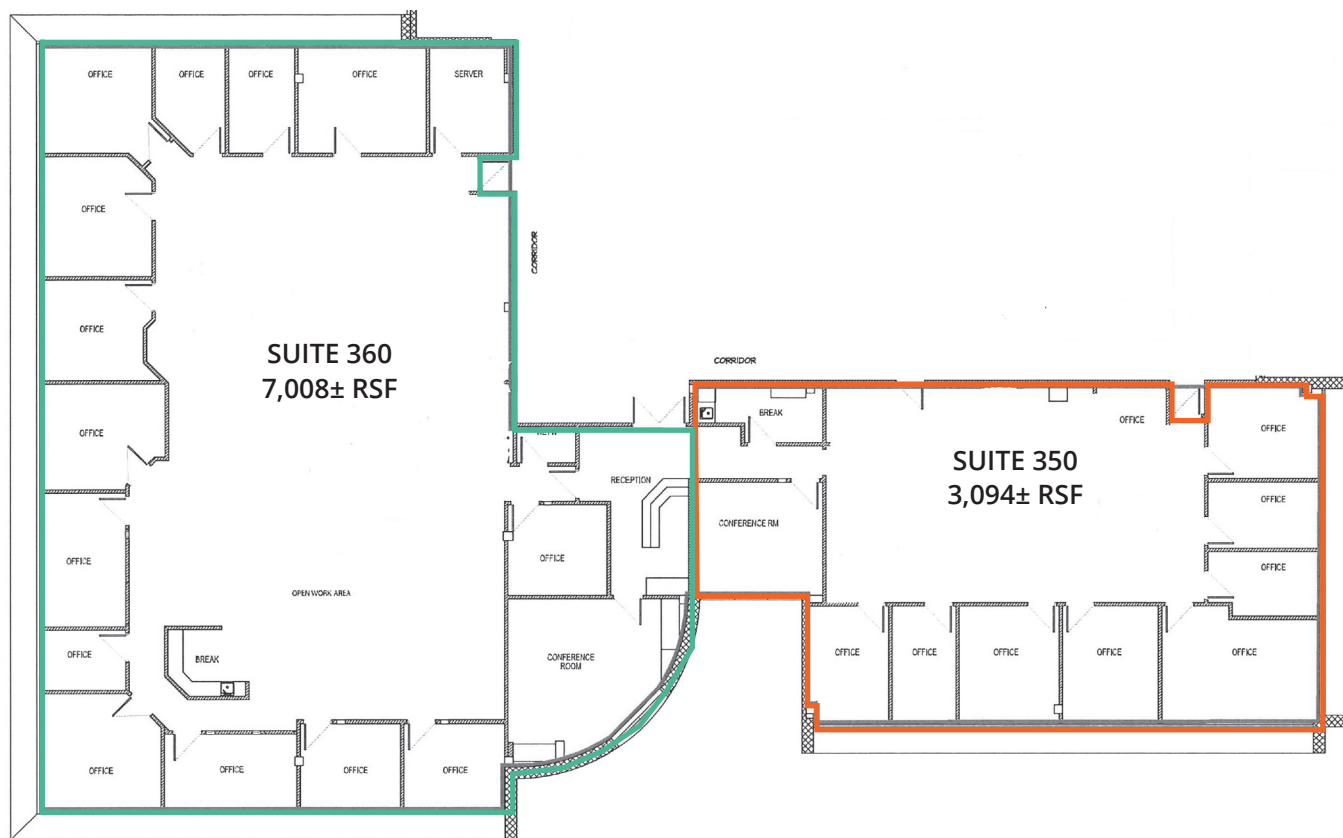


**KEY PLAN**

**Emily Zinaich**, Senior Vice President  
D 407 440 6641  
C 407 230 8797  
emily.zinaich@avisonyoung.com

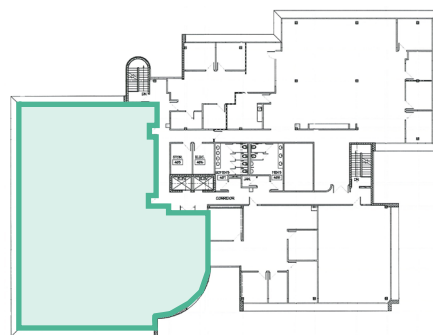


## Suite 350 - Can be Subdivided



**Emily Zinaich**, Senior Vice President  
D 407 440 6641  
C 407 230 8797  
emily.zinaich@avisonyoung.com

**Suite 400 - 6,570± sf**



**KEY PLAN**

**Emily Zinaich**, Senior Vice President  
D 407 440 6641  
C 407 230 8797  
emily.zinaich@avisonyoung.com