



**Bishop Beale Duncan**  
COMMERCIAL REAL ESTATE

## FLORIDA MALL BUSINESS CENTRE

1650 Sand Lake Road  
Orlando, Florida 32809

### TENANT-READY OFFICE SUITES

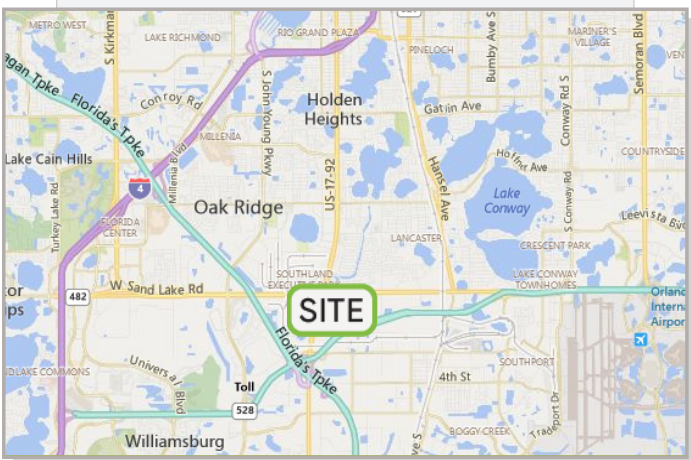


## FOR LEASE

- + **Primary Use:** Professional Office
- + **Space Cond.:** Move-In Ready
- + **Parking:** 3.91 / 1,000
- + **Signage:** Marquee

### AVAILABLE SUITES

First Floor	Ste. 103	2,800 SF	\$24.50 Modified Gross
Second Floor	Ste. 200	1,800 SF	\$24.00 Full Service



### Highlights

- Tenant-Only Parking Deck with Secure Access
- On the hard corner of Orange Blossom Trail and Sand Lake Road
- Central South Orlando Location:  
2 miles from Florida Highway 528  
2 Miles from the Florida Turnpike  
5 miles from Interstate 4  
7 miles from the Orlando International Airport

#### PATRICK GOETZ

Vice President  
(407) 734.7210  
Pat@BBDRE.com

This offer is subject to errors, omissions, prior sale or withdrawal without notice.

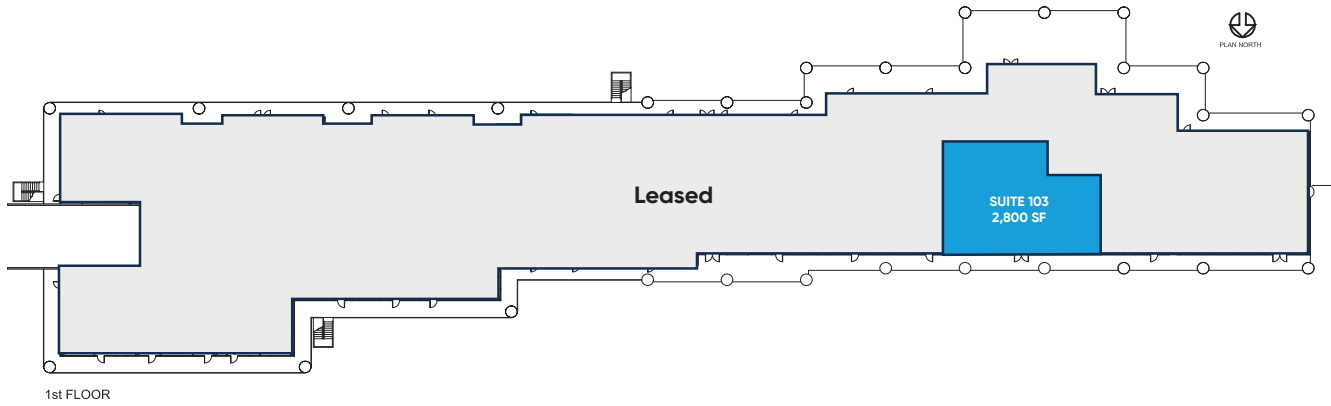


#### BISHOP BEALE DUNCAN

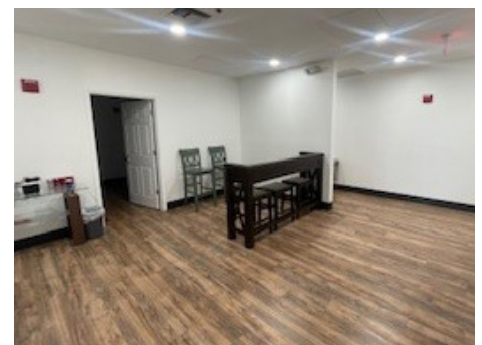
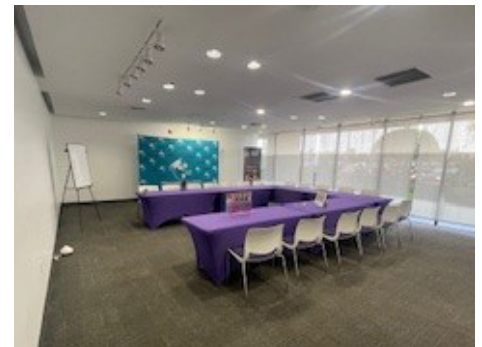
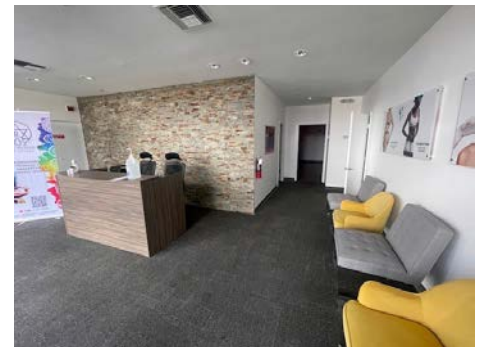
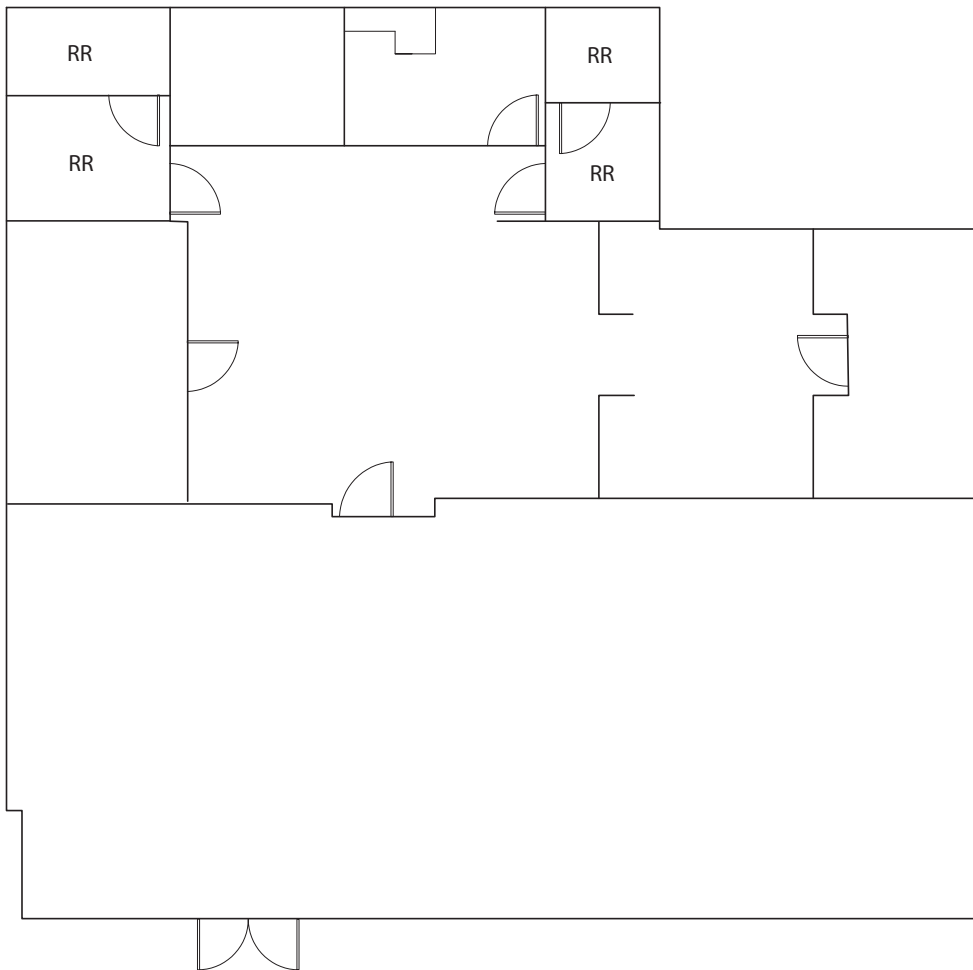
250 N. Orange Ave., Ste. 1500  
Orlando, FL 32801 + (407) 426.7702

[www.BBDRE.com](http://www.BBDRE.com)

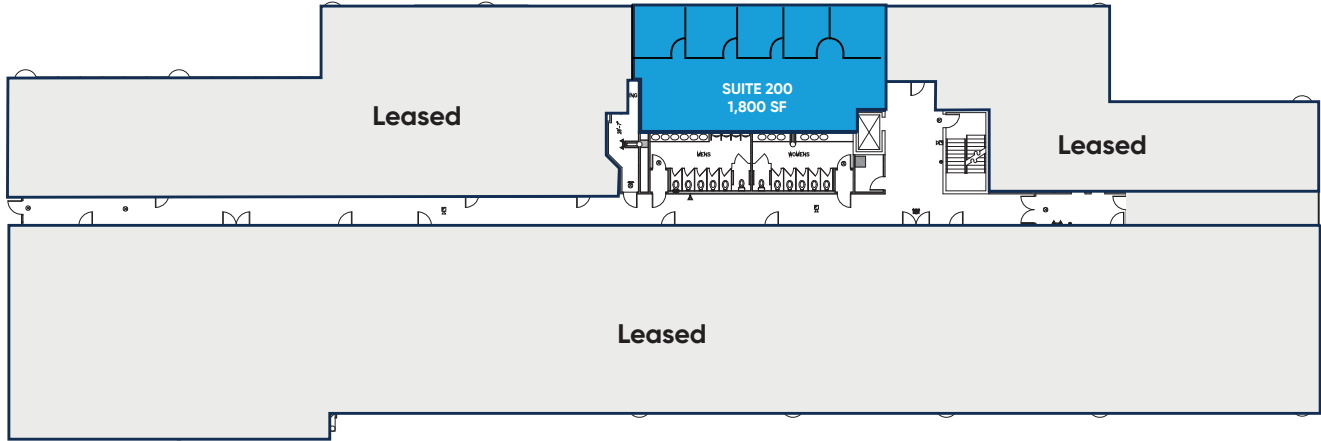
# First Floor



# Suite 103: 2,800 SF



## Second Floor



## Suite 200: 1,800 SF

