

**±2.16 Acre Commercial Development Site**  
Commerce Centre Drive, Port Saint Lucie 34986

**NAI Southcoast**



RESERVE BLVD

**±2.16 Acres Available**

COMMERCE CENTRE DRIVE



*Presented by*  
**Nikolaus M. Schroth, CCIM**  
Principal | Broker Associate  
+1 772 286 6292  
nikschroth@naisouthcoast.com  
www.naisouthcoast.com

**J. Jeffery Allman, Jr.**  
Associate  
+1 772 286 6292 c +1 772 283 1555  
jeff@naisouthcoast.com  
www.naisouthcoast.com

**James McKinney**  
Sales Associate  
+1 772 349 3414  
jamesmckinney@naisouthcoast.com  
www.naisouthcoast.com

For Sale:  
**Call For Pricing Guidance**

# ±2.16 Acre Commercial Development Site

Commerce Centre Drive, Port Saint Lucie 34986

## Property Details

- Address: Commerce Centre Drive, Port Saint Lucie 34986
- Zoning: PNRD
- Future Land Use: Commercial
- Municipality: St Lucie County
- Land Size: 2.16 Acres
- Frontage: ±895 feet on Reserve Blvd  
±715 feet on Commerce Centre Drive
- AADT: 12,200 AADT on St Lucie West Blvd
- Parcel ID(s): 3327-807-0002-000-4  
3327-807-0003-000-1

## Property Overview

This +/- 2.16-acre parcel is a prime commercial development opportunity in St. Lucie West near the entrance of PGA Village and adjacent to Tradition, the fastest growing town on the Treasure Coast.

The property has cross-access with the Hilton Garden Inn at PGA Village hotel off Commerce Centre Drive. Meritage Homes is developing Azalea, which is a 99-unit single family community, just to the south of the property. This site benefits from a prime location with unparalleled visibility on a main east/west thoroughfare with an I-95 interchange less than one mile to the east. There is a limited amount of commercial on Reserve Blvd insulating it from competitors on this key entrance to PGA Village and PGA Village Verano.



## Key Demographics

	Population	Average Household Income	Median Age
<b>1 Mile</b>	3,693	\$114,578	50.7
<b>3 Mile</b>	42,230	\$98,602	49.2
<b>5 Mile</b>	116,560	\$92,520	42.1

# ±2.16 Acre Commercial Development Site

Commerce Centre Drive, Port Saint Lucie 34986

## Aerial Views



# ±2.16 Acre Commercial Development Site

Commerce Centre Drive, Port Saint Lucie 34986

Aerial Views



# ±2.16 Acre Commercial Development Site

Commerce Centre Drive, Port Saint Lucie 34986

## Aerial Views



# ±2.16 Acre Commercial Development Site

Commerce Centre Drive, Port Saint Lucie 34986

## Aerial Views

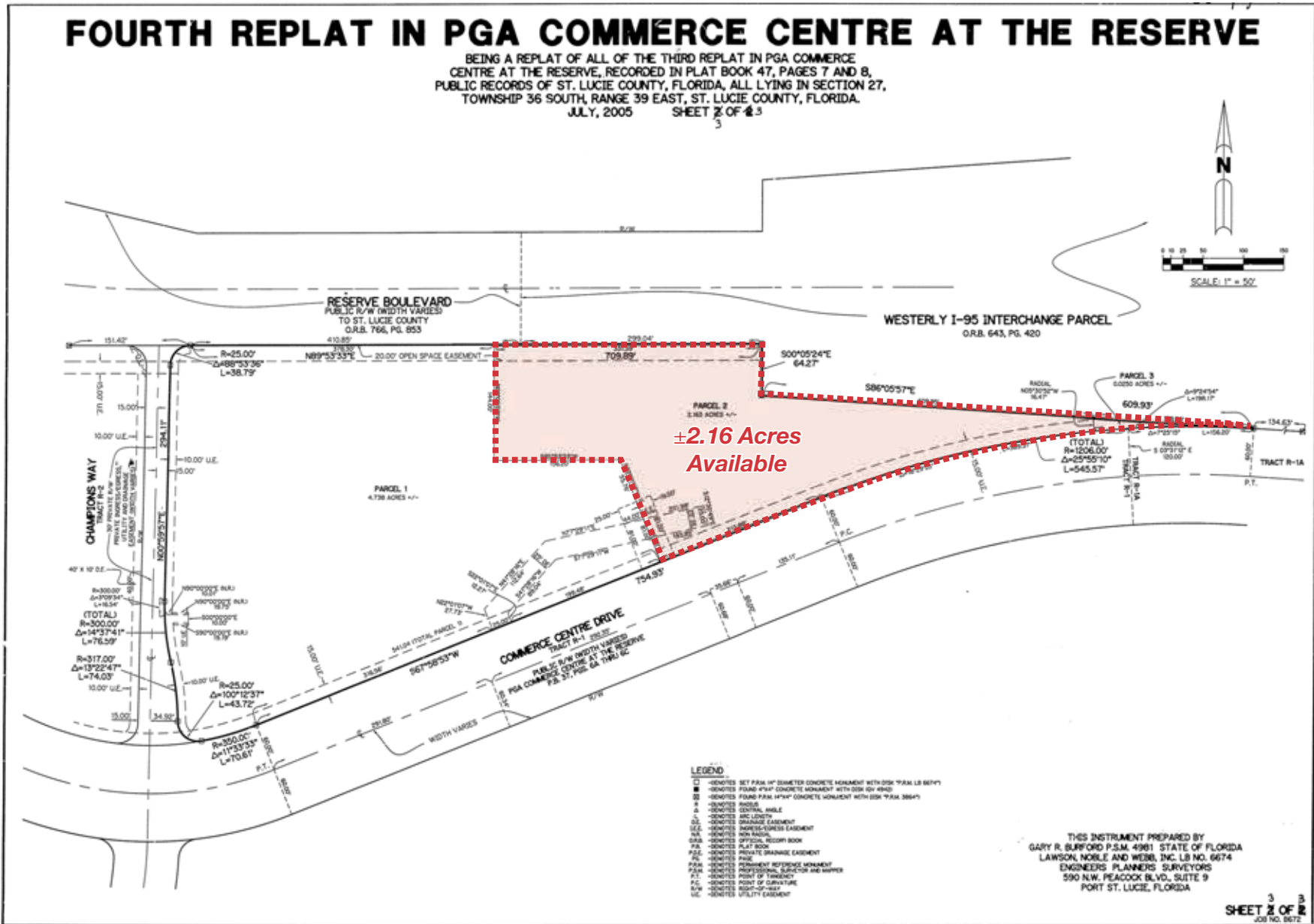


# ±2.16 Acre Commercial Development Site

Commerce Centre Drive, Port Saint Lucie 34986

Aerial Views



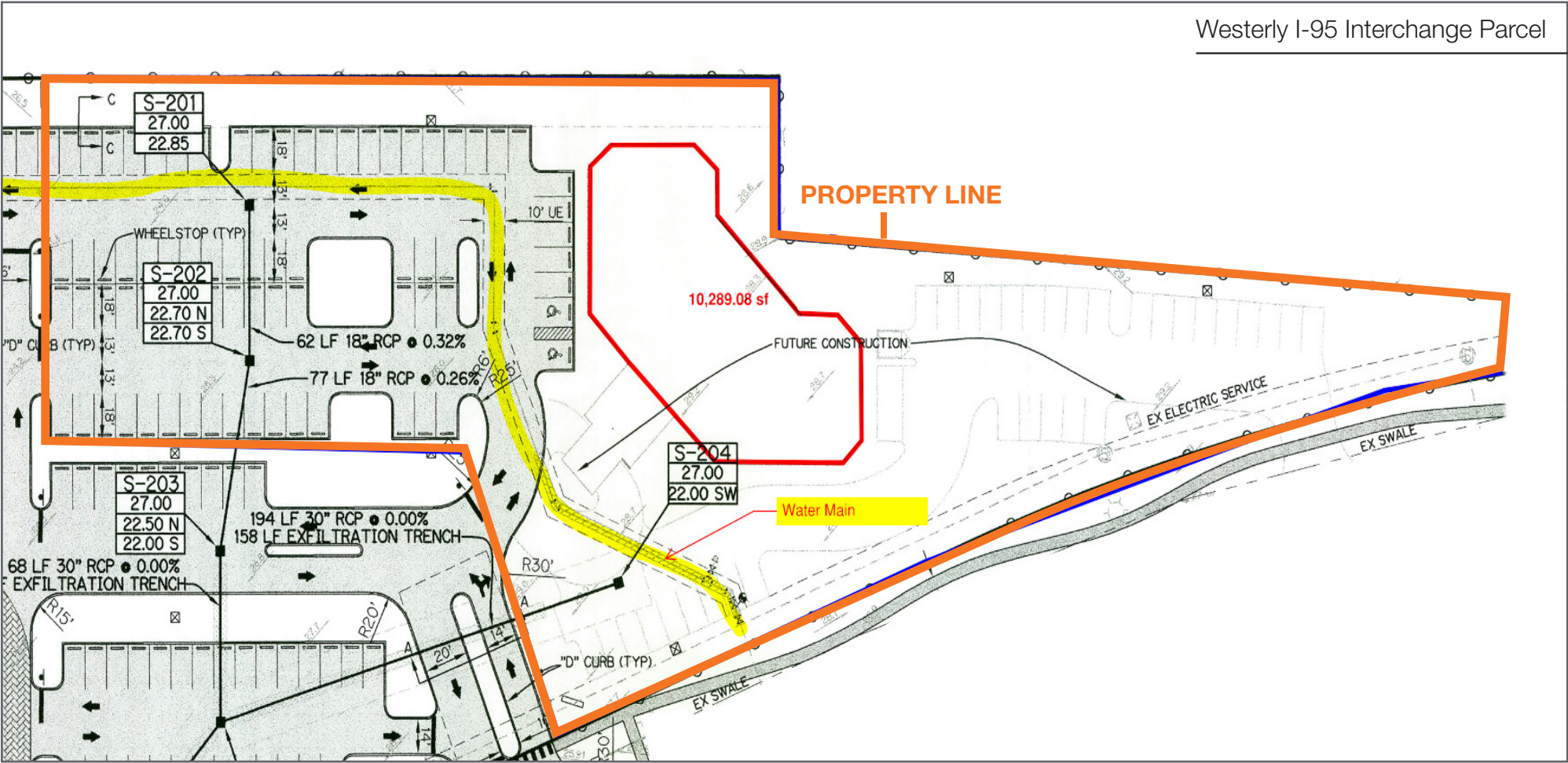




# ±2.16 Acre Commercial Development Site

Commerce Centre Drive, Port Saint Lucie 34986

# Previously Proposed Site Plan



# ±2.16 Acre Commercial Development Site

Commerce Centre Drive, Port Saint Lucie 34986

Satellite Image



# ±2.16 Acre Commercial Development Site

Commerce Centre Drive, Port Saint Lucie 34986



# ±2.16 Acre Commercial Development Site

Commerce Centre Drive, Port Saint Lucie 34986



# ±2.16 Acre Commercial Development Site

Commerce Centre Drive, Port Saint Lucie 34986

Tradition Residential



# ±2.16 Acre Commercial Development Site

Commerce Centre Drive, Port Saint Lucie 34986

## Strong Economic Expansion 2019-Present

### Economic Expansion by Year

Calendar Year 2019							
Company	Industry	Location	Project Scope	Projected New Jobs	Baseline Employment	2022 Total Employment	Facility Square Footage
A-1 Industries of Florida	Manufacturing	St. Lucie County	EXPANSION	28	257	290	60,000
ACCEL International	Manufacturing	Port St. Lucie	NEW	125	0	0	150,000
Aerex	Manufacturing	St. Lucie County	EXPANSION	10	25	31	10,000
Amazon	Distribution	St. Lucie County	NEW	500	0	**	60,000
Aquaco Farms	Aquaculture	St. Lucie County	NEW	5	0	8	20,000
Cleveland Clinic Lerner Research Institute	Life Sciences	Port St. Lucie	NEW	50	0	87	60,000
Dirty Deeds Cleaning Service	Small Business	St. Lucie County	EXPANSION	31	44	38	6,000
Drexel Metals	Manufacturing	Port St. Lucie	NEW	25	0	7	25,000
PlusOneAir	Aviation	St. Lucie County	NEW	25	0	27	25,000
Pursuit Boats II	Marine	St. Lucie County	EXPANSION	200	404	684	236,000
Ross Mixing	Manufacturing	Port St. Lucie	EXPANSION	16	40	46	55,000
				<b>1,015</b>	<b>770</b>	<b>1,218</b>	<b>707,000</b>

Calendar Year 2020							
Company	Industry	Location	Project Scope	Projected New Jobs	Baseline Employment	2022 Total Employment	Facility Square Footage
California Closets	Warehouse/Distribution	St. Lucie County	EXPANSION	10	28	48	10,000
Citrus Extracts	Manufacturing	Fort Pierce	NEW	40	35	43	75ft. Tower
FedEx Ground	Warehouse/Distribution	Port St. Lucie	NEW	490	0	543	245,000
Indian River Spirits	Manufacturing	St. Lucie County	NEW	5	0	0	20,000
Interstate Crossroads Business Center by The Silverman Group	Industrial Development	Fort Pierce	NEW	755*	0	0	1,133,000
Legacy Park at Tradition by Sansone Group	Industrial Development	Port St. Lucie	NEW	2,376*‡	0	‡	3,600,000‡
Total Truck Parts	Warehouse/Distribution	Port St. Lucie	EXPANSION	10	16	15	51,780
Wolflube	Warehouse/Distribution	St. Lucie County	NEW	15	0	15	30,000
				<b>3,701</b>	<b>79</b>	<b>664</b>	<b>5,089,780</b>

\* Projected new jobs are derived from the US Energy Information Administration Energy Consumption Survey = Median square feet per worker at 1,500 \*\* Jobs transferred to Port St. Lucie facility in 2022. Projected new jobs and facility square footage net of announced projects within the park.

Calendar Year 2021							
Company	Industry	Location	Project Scope	Projected New Jobs	Baseline Employment	2022 Total Employment	Facility Square Footage
Amazon First-mile Fulfillment Center	Warehouse/Distribution	Port St. Lucie	NEW	500	0	0	1,100,000
Chandler Bats	Manufacturing	Port St. Lucie	NEW	11	0	14	17,000
Chemical Technologies Holdings	Manufacturing	St. Lucie County	NEW	5	0	5	8,000
Cheney Brothers	Warehouse/Distribution	Port St. Lucie	NEW	350	0	0	427,000
Contender Boats	Marine	St. Lucie County	NEW	200	0	84	100,000
D&D Welding	Manufacturing	St. Lucie County	EXPANSION	10	32	85	33,000
FA Precast	Manufacturing	St. Lucie County	EXPANSION	0	22	22	17,000
Freshco/Indian River Select	Manufacturing	Fort Pierce	EXPANSION	20	90	83	16,375
Jansteel	Manufacturing	Port St. Lucie	NEW	55	0	0	67,193
Kings Logistics Center	Industrial Development	St. Lucie County	NEW	433*	0	0	650,000
Maverick Boat Group	Marine	St. Lucie County	EXPANSION	150	520	580	106,000
South Florida Logistics Center #5	Industrial Development	St. Lucie County	NEW	886*	0	0	1,300,000
SRS Distribution	Warehouse/Distribution	Fort Pierce	NEW	11	0	12	32,000
				<b>2,611</b>	<b>664</b>	<b>685</b>	<b>3,872,568</b>

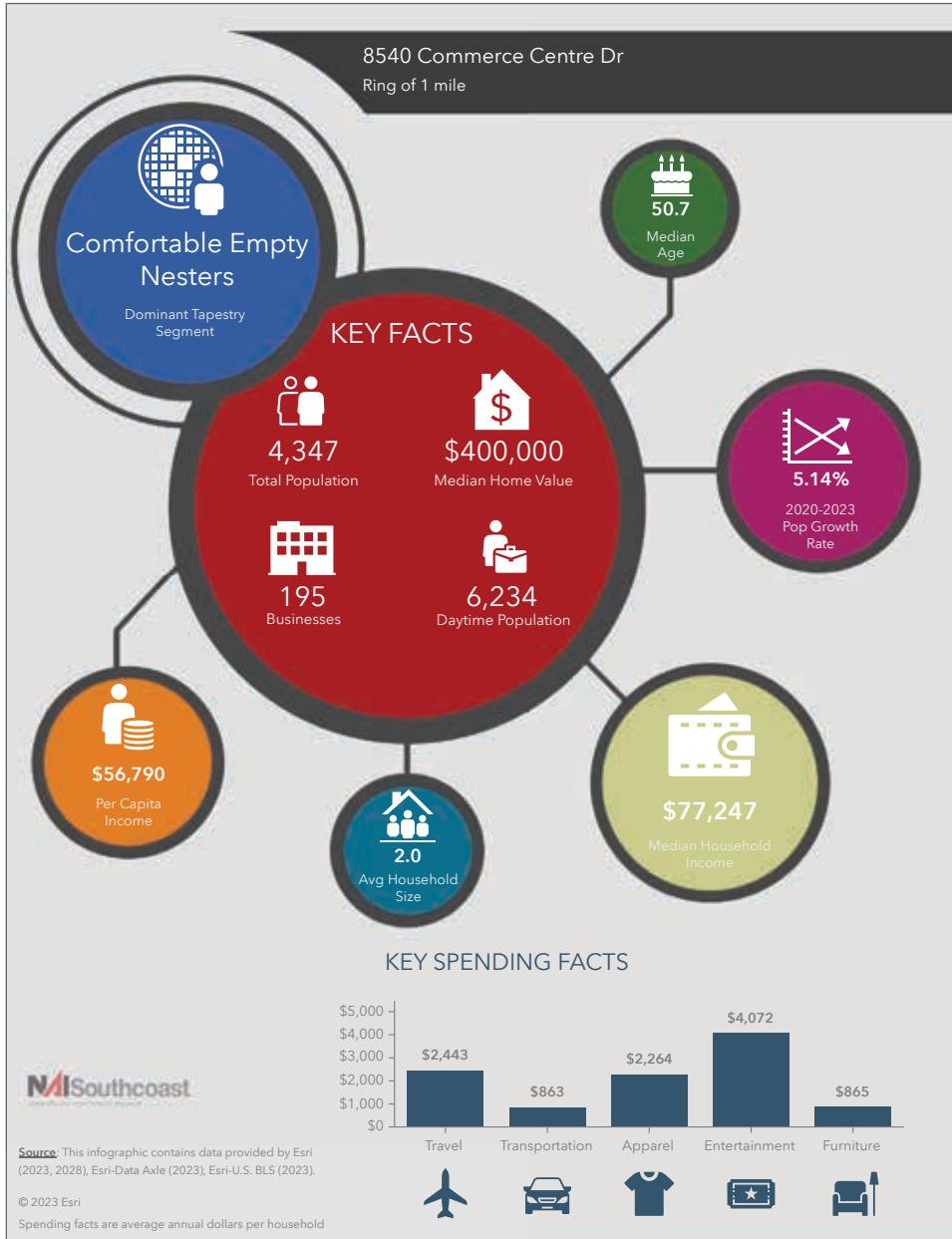
Calendar Year 2022							
Company	Industry	Location	Project Scope	Projected New Jobs	Baseline Employment	2022 Total Employment	Facility Square Footage
Amazon Delivery Station	Warehouse/Distribution	Port St. Lucie	NEW	200**	170	170	220,000
Arcosa Meyer Utility Structures	Manufacturing	St. Lucie County	NEW	99	0	0	89,000
Glades Commerce Center	Industrial Development	Port St. Lucie	NEW	192*	0	0	287,500
Glades Logistics Park	Industrial Development	Port St. Lucie	NEW	238*	0	0	354,200
Interstate Commerce Center	Industrial Development	Fort Pierce	NEW	138*	0	0	207,458
Islamorada Distillery	Manufacturing	St. Lucie County	EXPANSION	15	0	0	18,841
Islamorada Warehouse	Warehouse/Distribution	St. Lucie County	EXPANSION	0	0	0	22,000
Legacy Park Spec A & Spec B	Industrial Development	Port St. Lucie	NEW	459*	0	0	688,000
MJC Express	Transportation	Fort Pierce	NEW*	25	0	0	6,000
Pursuit Boats Phase 3	Marine	St. Lucie County	EXPANSION	100	634	684	109,000
St. Lucie Commerce Center	Industrial Development	Fort Pierce	NEW	800*	0	0	1,200,000
Tenet Health	Life Sciences	Port St. Lucie	NEW*	600‡	0	0	181,925
				<b>2,864</b>	<b>804</b>	<b>854</b>	<b>3,384,924</b>

\* Projected new jobs are derived from the US Energy Information Administration Energy Consumption Survey = median square feet per worker at 1,500 \*\* New facility in 2022, jobs transferred from 2029 project. Includes full-time, part-time and per diem workers

# ±2.16 Acre Commercial Development Site

Commerce Centre Drive, Port Saint Lucie 34986

## 2023 Demographics



### Population

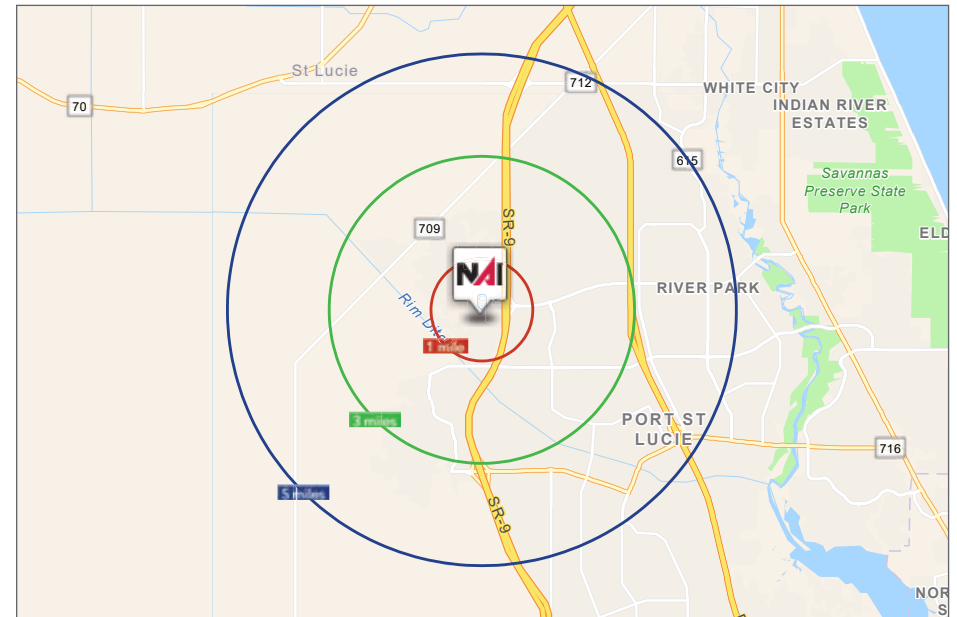
- 1 Mile: 3,693
- 3 Mile: 42,230
- 5 Mile: 116,560

### Average Household Income

- 1 Mile: \$114,578
- 3 Mile: \$98,602
- 5 Mile: \$92,520

### Median Age

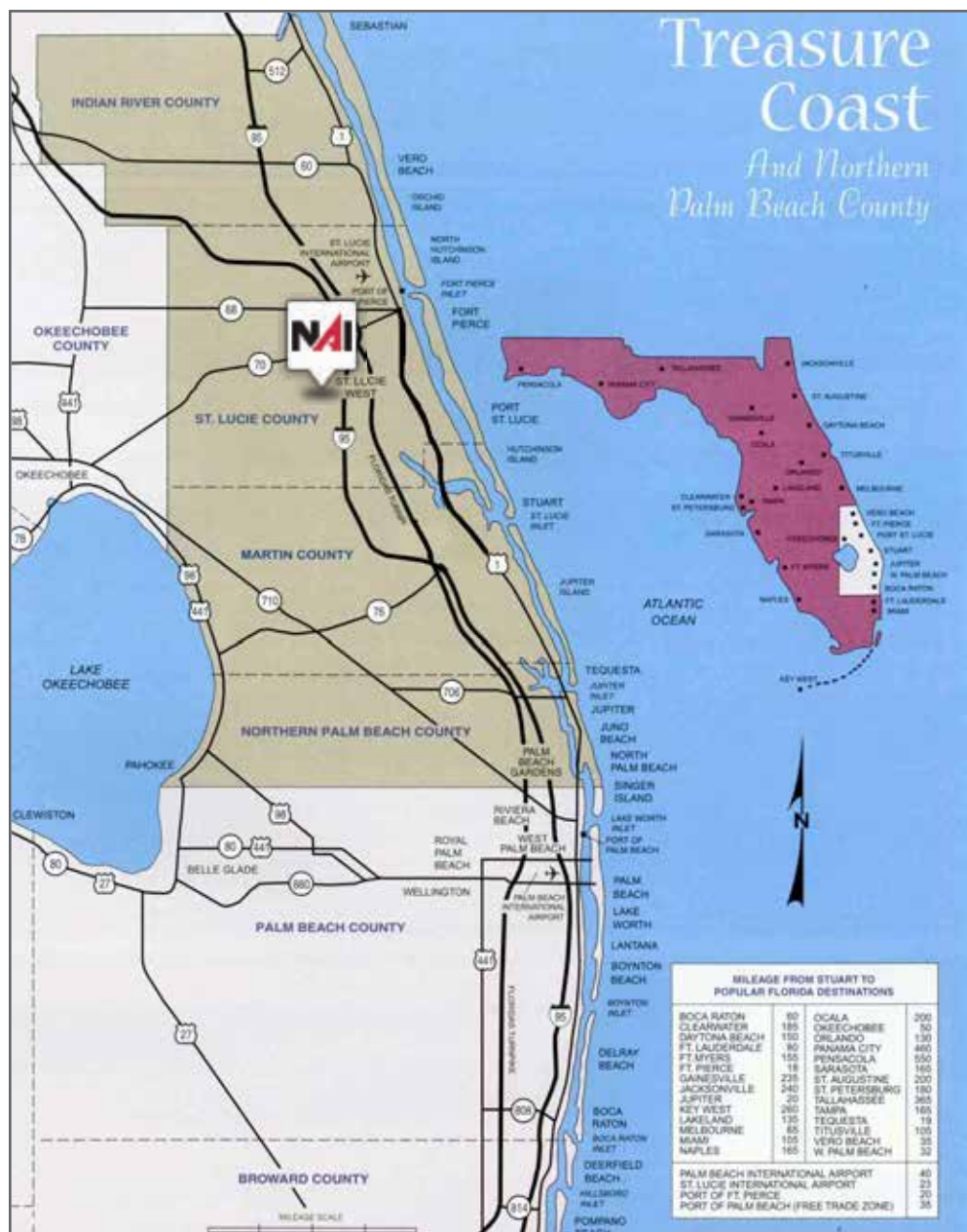
- 1 Mile: 50.7
- 3 Mile: 49.2
- 5 Mile: 42.1



# ±2.16 Acre Commercial Development Site

Commerce Centre Drive, Port Saint Lucie 34986

## Area Maps





# City Overview

City of Ft. Pierce, Florida



Fort Pierce is famous for being a quaint fishing village, but take a closer look and you will find a treasure trove of activities. As one of the most diverse communities on the Treasure Coast, Fort Pierce has the cultural excitement to rival any “big city” atmosphere. With weekly and monthly events and premier shows at the Sunrise Theatre, visitors never run out of things to do or people to meet.

Fort Pierce is located on the pristine Indian River Lagoon with one of the best all-weather inlets in the state of Florida. Even though Fort Pierce is known for its world class fishing, some visitors would rather take an eco-friendly motorized kayak down the Indian River or dolphin watch on a tour boat. Paddle boarding and horseback riding on unspoiled beaches is also a hit among tourists. Fort Pierce’s natural beauty is world renowned.

Our cultural enhancements include the Zora Neale Hurston Trail, commemorating the noted author and anthropologist who lived her last years in Fort Pierce and the Highwaymen Heritage Trail. The Highwaymen, also referred to as the Florida Highwaymen, are 26 storied, world-renown African American landscape artists who originated in the City of Fort Pierce. Visitors from all over the United States visit Fort Pierce to experience the Highwaymen Heritage Trail, a self-guided engaging and educational experience that recognizes these mostly self-taught landscape artists who have strong local, state, national and international significance.

Museums in Fort Pierce include the newly-enlarged Florida landscape artist A.E. “Beanie” Backus museum and the St. Lucie Regional History Museum, with its satellite Adams Cobb Cultural Museum in the P.P. Cobb Building. Fort Pierce’s most popular tourist attraction, the National UDT Navy SEAL museum, commemorates the birth of the Navy frogmen here in Fort Pierce, and chronicles the evolution of this military unit to today’s Navy SEALs.

Fort Pierce City Marina is home to the Southern Kingfish Association’s National Championship Fishing Tournament every three years bringing 250-300 fishing teams to Downtown Fort Pierce. SKA has also committed to add Fort Pierce to the tournament’s Pro Tour schedule during the off years.

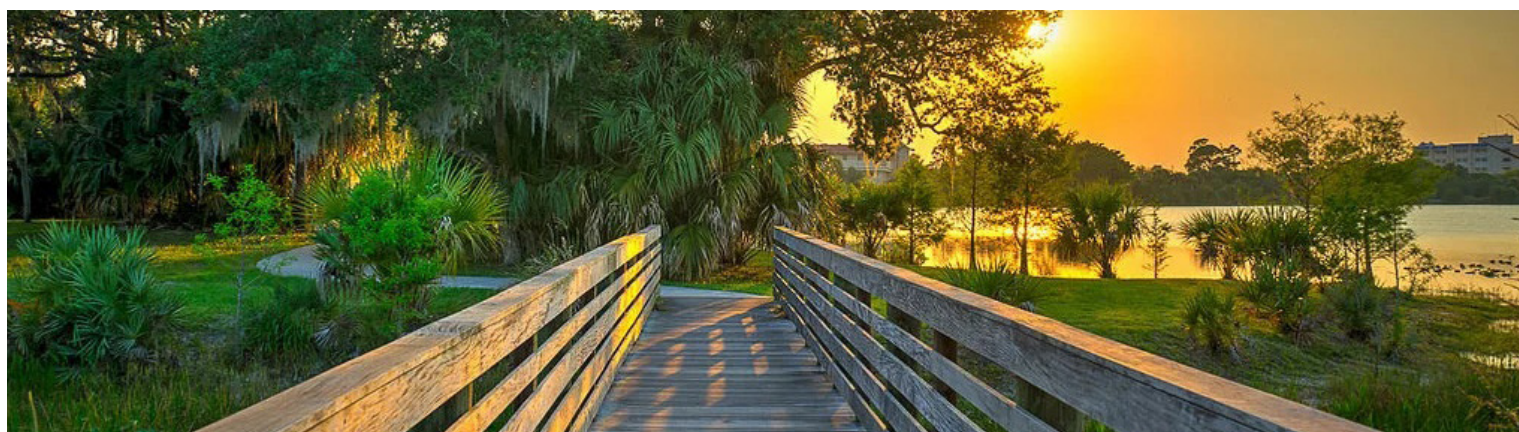
# Regional Overview

St. Lucie County, FL

Extensive, dependable transportation and easy access is the key to growth, and St. Lucie County has both in abundance. Interstate Highway 95 and U.S. Highway 1 provide easy access to the country's east coast, from Key West to Maine. The Florida Turnpike stretches from just south of Miami through northern-central Florida, while State Road 70 runs from U.S. Highway 1 in Fort Pierce west to Bradenton, Florida. St. Lucie County offers a plethora of transportation linkages which include rail, a custom-serviced international airport, and a deep-water port – all of which enable easy access to all St. Lucie County has to offer. The St. Lucie County International Airport is also one of the busiest general aviation airports in the state.

The county has a population of over 328,000 and has experienced growth of over 18% since 2010. The area economy is a blend of emerging life science R&D with traditional manufacturing, agriculture, tourism and services. St. Lucie County's natural resources are enviable, with more than 21 miles of pristine coastline and beaches, coral reefs, more than 20,000 acres of public parks and nature preserves, and miles of rivers and waterways.. The area boasts over 20 public and semiprivate courses, with prices ranging from upscale to very affordable, and the great weather allows for play all year round. St. Lucie County is home to Clover Park in Port St. Lucie, the Spring training home of the New York Mets.

The county is host to Indian River State College, an institution that has won national recognition for excellence and innovation applied toward training and education. St. Lucie County boasts 39 schools with a total of 41,409 students and 5,205 staff. The Economic Development Council of St. Lucie County (EDC) is a non-profit organization with the goal of creating more, high-paying jobs for residents by working in concert on agreed upon strategies to promote the retention and expansion of existing businesses, as well as attracting new ones to St. Lucie County. Workers employed in St. Lucie County are clustered in the Health Care and Social Assistance (18.4%), and Retail Trade (11.9%) industries. Workers living in St. Lucie County are concentrated in the Health Care and Social Assistance (16.3%), and Retail Trade (14.1%) industries. Since 2017 the EDC has facilitated 40 expansion and new attraction job creating projects with a net growth of building area of approximately 6,500,000 square feet.





Nikolaus M. Schroth, CCIM  
Principal | Broker Associate  
+1 772 286 6292  
nikschroth@naisouthcoast.com



J. Jeffery Allman, Jr.  
Sales Associate  
+1 772 286 6292 c +1 772 283 1555  
jeff@naisouthcoast.com



James McKinney  
Sales Associate  
+1 772 349 3414  
jamesmckinney@naisouthcoast.com

## ±2.16 Acre Commercial Development Site Commerce Centre Drive, Port Saint Lucie 34986



For Sale:

# Call For Pricing Guidance