



## PROPERTY DESCRIPTION

Discover the premier office space available for lease at 6881 Kingspointe Parkway, Orlando. This modern and elegant property offers an array of amenities including custom-built office suites with TONS of natural light designed for productivity and comfort. With ample parking, security, and convenient access to major highways, the property provides a seamless professional environment for tenants. The thoughtfully designed common areas and breathtaking views enhance the overall work experience. Whether you're a start-up, expanding business, or established corporation, this property offers the ideal space to elevate your business to new heights.

This facility includes 7 offices, one huge storage room, Halls, meeting room, and one big Room.

## PROPERTY HIGHLIGHTS

- Modern and elegant office space

## OFFERING SUMMARY

Lease Rate:	\$17.00 SF/yr (NNN)
Number of Units:	1
Available SF:	2,908 SF
Lot Size:	0.094 Acres
Building Size:	2,908 SF

DEMOGRAPHICS	0.5 MILES	1 MILE	1.5 MILES
Total Households	230	2,065	6,434
Total Population	764	6,575	19,147
Average HH Income	\$60,480	\$55,259	\$58,345



Amy Calandrino, CCIM, SIOR  
CEO/Founding Broker  
407.641.2221  
amy@beyondcommercial.com



# 6881 KINGSPONTE PKWY, UNIT 2, ORLANDO, FL 32819

6881 Kingspointe Pkwy, Unit 2, Orlando, FL 32819  
6881 Kingspointe Parkway, Unit 2 Orlando, FL 32819

OFFICE BUILDING FOR LEASE

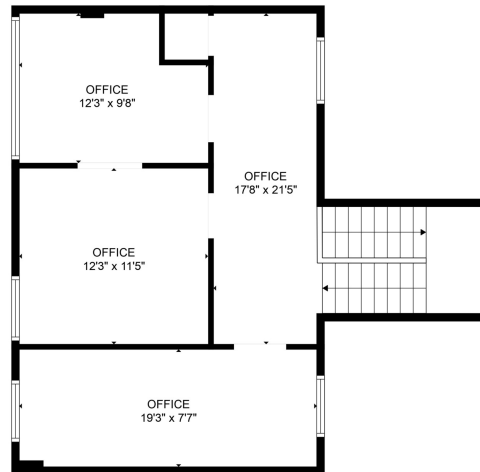


Amy Calandrino, CCIM, SIOR  
CEO/Founding Broker  
407.641.2221  
amy@beyondcommercial.com





TOTAL: 2198 sq. ft.  
FLOOR 1: 2198 sq. ft.  
EXCLUDED AREAS: STORAGE: 117 sq. ft.  
MEASUREMENTS ARE CALCULATED BY CURBEASA TECHNOLOGY. DERIVED FROM LASER SCANNING BUT NOT GUARANTEED.



TOTAL: 643 sq. ft.  
FLOOR 1: 643 sq. ft.  
MEASUREMENTS ARE CALCULATED BY CURBEASA TECHNOLOGY. DERIVED FROM LASER SCANNING BUT NOT GUARANTEED.

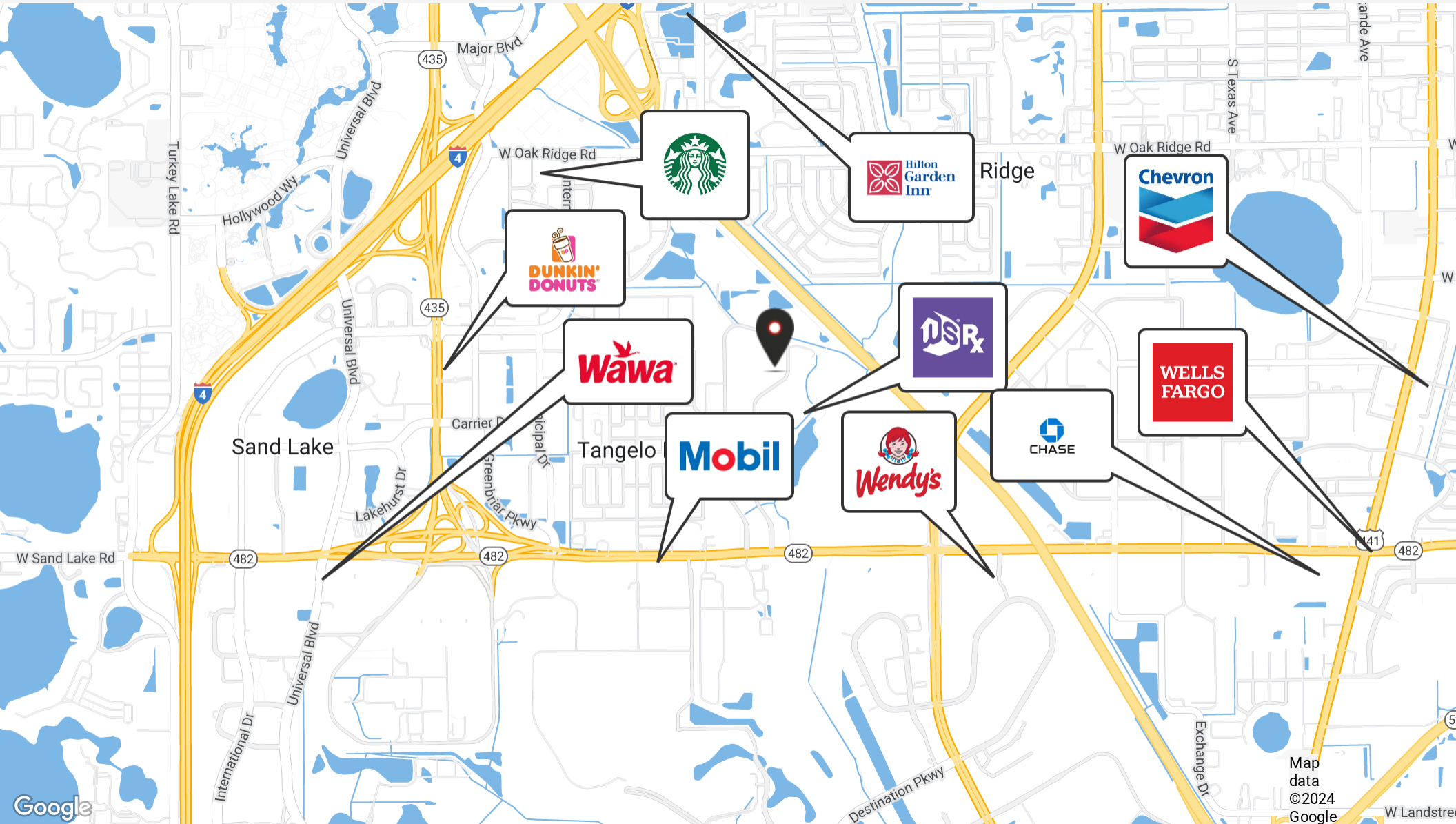


Amy Calandrino, CCIM, SIOR  
CEO/Founding Broker  
407.641.2221  
amy@beyondcommercial.com

# 6881 KINGSPOINTE PKWY, UNIT 2, ORLANDO, FL 32819

6881 Kingspointe Pkwy, Unit 2, Orlando, FL 32819  
6881 Kingspointe Parkway, Unit 2 Orlando, FL 32819

OFFICE BUILDING FOR LEASE



Amy Calandrino, CCIM, SIOR  
CEO/Founding Broker  
407.641.2221  
amy@beyondcommercial.com



# 6881 KINGSPORTE PKWY, UNIT 2, ORLANDO, FL 32819

6881 Kingspointe Pkwy, Unit 2, Orlando, FL 32819  
6881 Kingspointe Parkway, Unit 2 Orlando, FL 32819

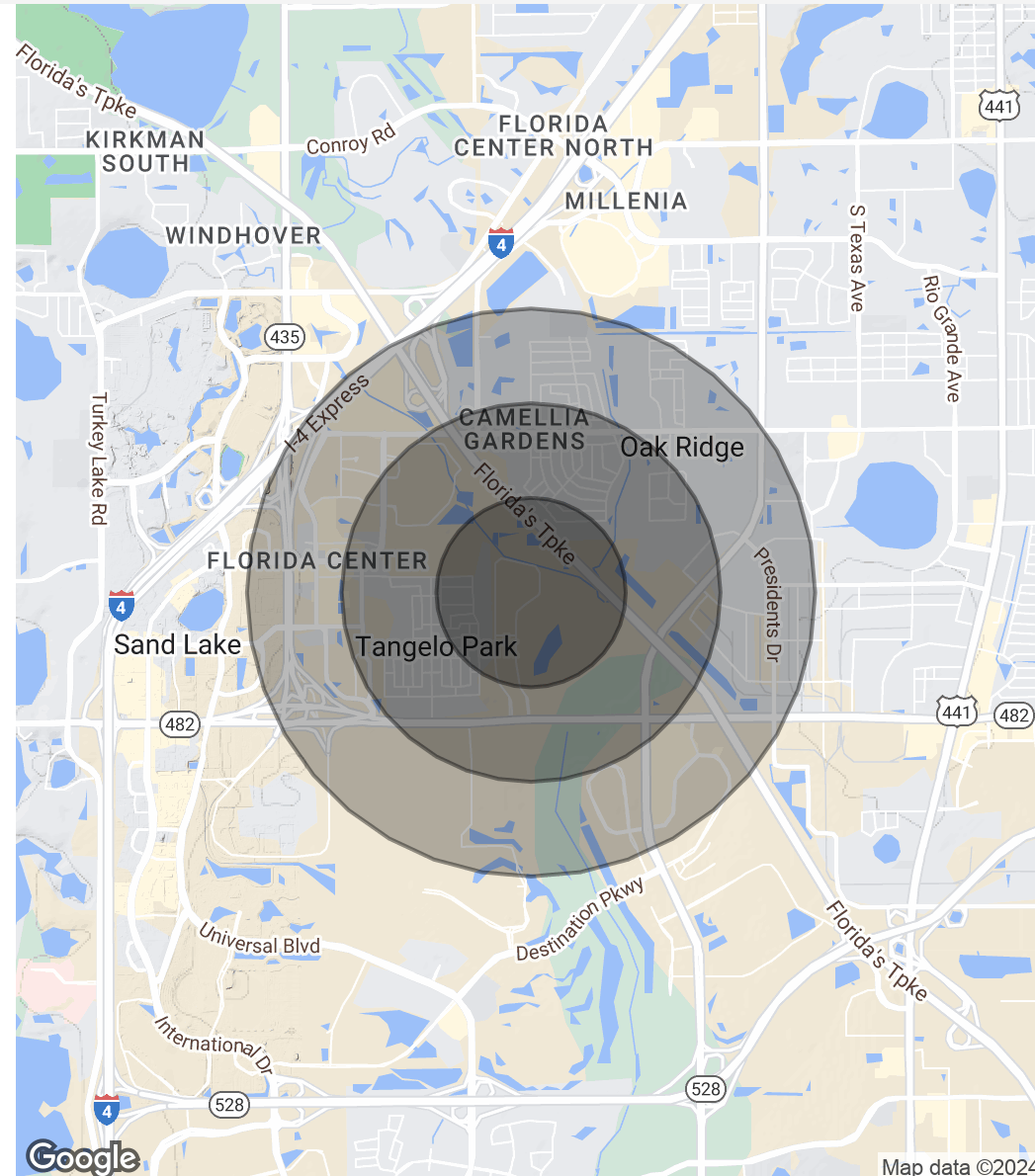
OFFICE BUILDING FOR LEASE

POPULATION	0.5 MILES	1 MILE	1.5 MILES
Total Population	764	6,575	19,147
Average Age	38	35	35
Average Age (Male)	37	34	34
Average Age (Female)	39	37	36

HOUSEHOLDS & INCOME	0.5 MILES	1 MILE	1.5 MILES
Total Households	230	2,065	6,434
# of Persons per HH	3.3	3.2	3
Average HH Income	\$60,480	\$55,259	\$58,345
Average House Value	\$242,140	\$211,333	\$219,092

Demographics data derived from AlphaMap



Amy Calandrino, CCIM, SIOR  
CEO/Founding Broker  
407.641.2221  
amy@beyondcommercial.com