

OSCEOLA COMMERCE CENTER

CLASS-A INDUSTRIAL

±22,934 - 62,924 RSF AVAILABLE FOR LEASE

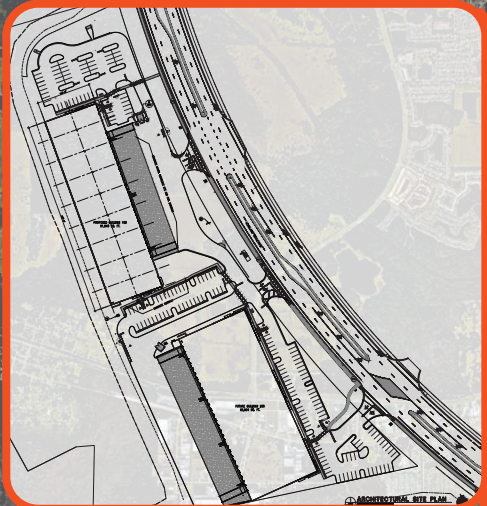
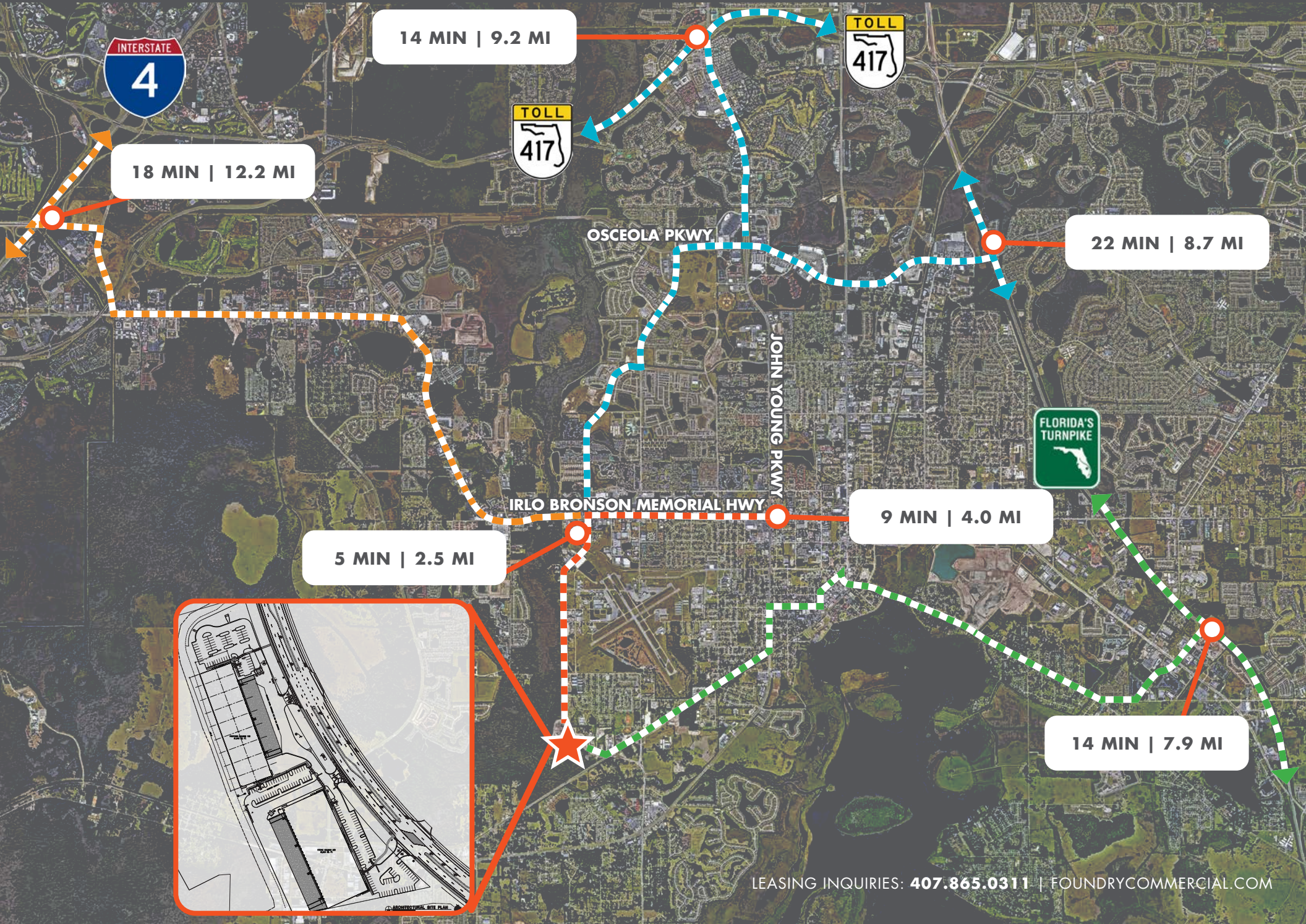
FOUNDRY
COMMERCIAL



1220 S HOAGLAND BLVD, KISSIMMEE, FL 34746

LOCAL LOCATION & ACCESS

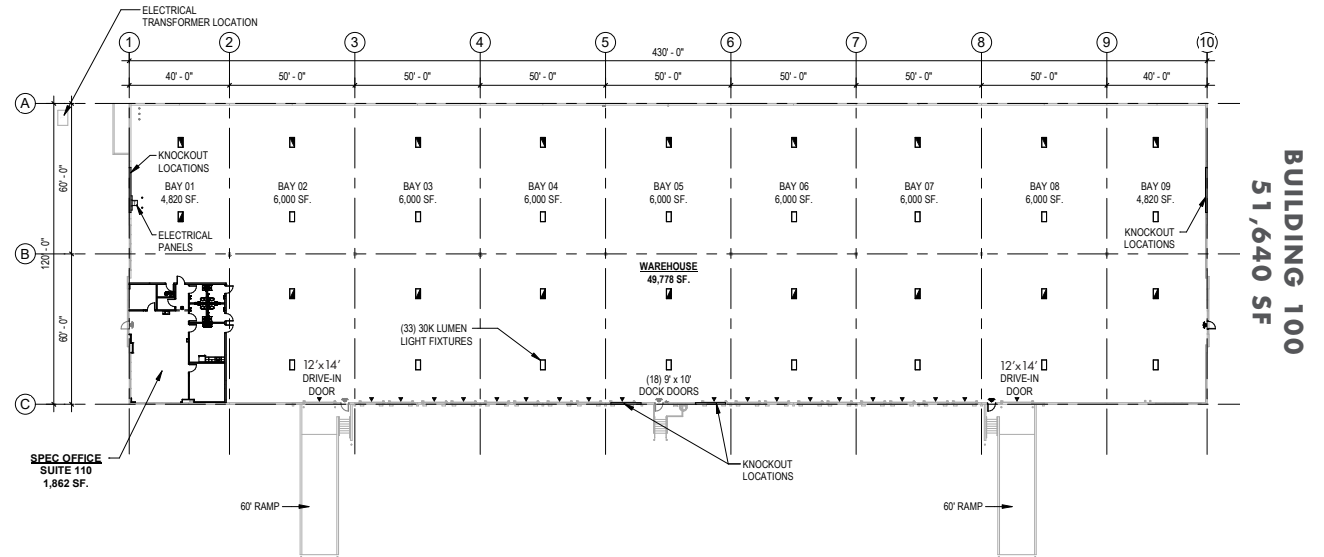
OSCEOLA COMMERCE CENTER



LEASING INQUIRIES: 407.865.0311 | [FOUNDRYCOMMERCIAL.COM](http://foundrycommercial.com)

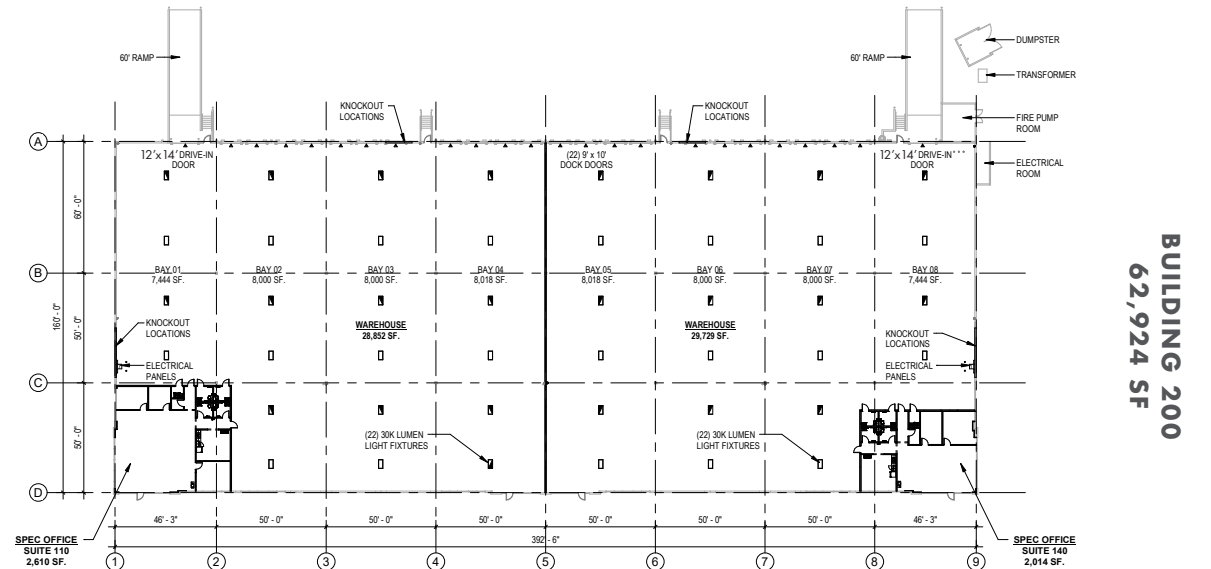
BUILDING 100

TOTAL SF:	22,934 - 51,640
YEAR BUILT:	2024
BUILDING TYPE:	Front Load
BUILDING DEPTH:	120'
CLEAR:	28'
COLUMN WIDTH:	60' speed (typical)
DOCK DOORS:	18 (9'x10")
OVERHEAD DOORS & RAMPS:	2 (12'x14') with ramps
TRUCK COURT DEPTH:	120'
LIGHTING:	LED
POWER:	1,200 amps/400 amps
SPRINKLER:	ESFR
INSULATION:	R-19 throughout



BUILDING 200

TOTAL SF:	23,549 - 62,924
YEAR BUILT:	2024
BUILDING TYPE:	Rear Load
BUILDING DEPTH:	160'
CLEAR:	28'
COLUMN WIDTH:	60' speed (typical)
DOCK DOORS:	22 (9'x10")
OVERHEAD DOORS & RAMPS:	2 (12'x14') with ramps
TRUCK COURT DEPTH:	120'
LIGHTING:	LED
POWER:	1,200 amps/400 amps
SPRINKLER:	ESFR
INSULATION:	R-19 Entry Bay/Office & R-11 warehouse







**CONTACT
FOR MORE INFORMATION**

JUSTIN RUBY, SIOR, CCIM

JUSTIN.RUBY@FOUNDRYCOMMERCIAL.COM

407.865.0311

JOEY WOODMAN

JOEY.WOODMAN@FOUNDRYCOMMERCIAL.COM

407.748.5888

TRAVIS HAMMOND

TRAVIS.HAMMOND@FOUNDRYCOMMERCIAL.COM

407.401.1707

FOUNDRY
COMMERCIAL

Although the information contained herein was provided by sources believed to be reliable, Foundry Commercial makes no representation, expressed or implied, as to its accuracy and said information is subject to errors, omissions or changes.