

Paleo Park of Commerce

0 UZITA DRIVE, SARASOTA, FL 34240

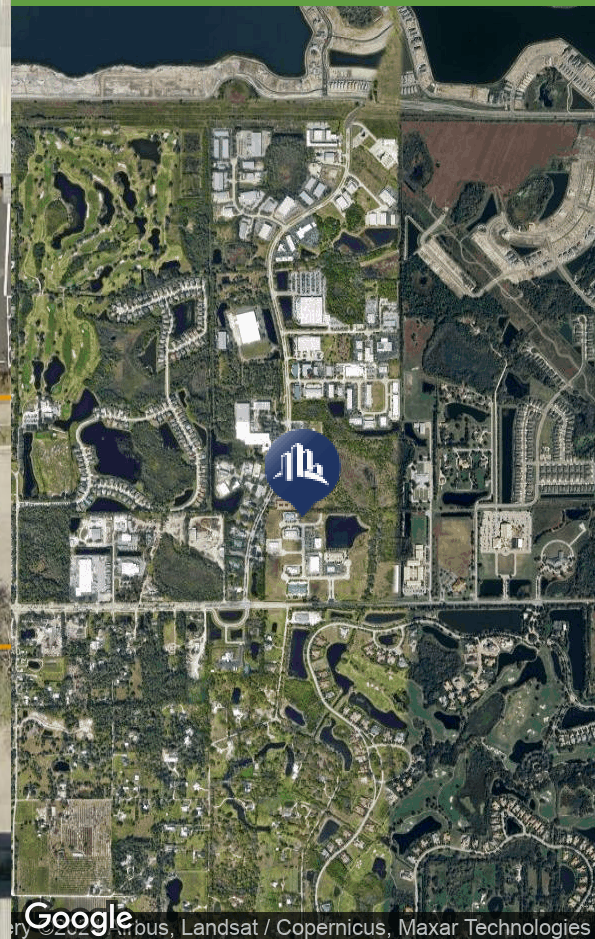
FOR SALE

\$491,112
Land



PROPERTY FEATURES

- - Zoned PID for versatile development opportunities
- - Strategic location in the thriving Sarasota area
- - Ideal for industrial ventures
- - Convenient access to key transportation routes
- - Potential for manufacturing, distribution, or warehousing facilities
- - Prime investment opportunity in the dynamic Sarasota market



Theresa Blanch-Mitchell, CCIM
1922 VICTORIA AVE STE A FT MYERS, FL 33901
239.265.2628
theresa@ccim.net
FL #BK3202944

Each office independently owned and operated.

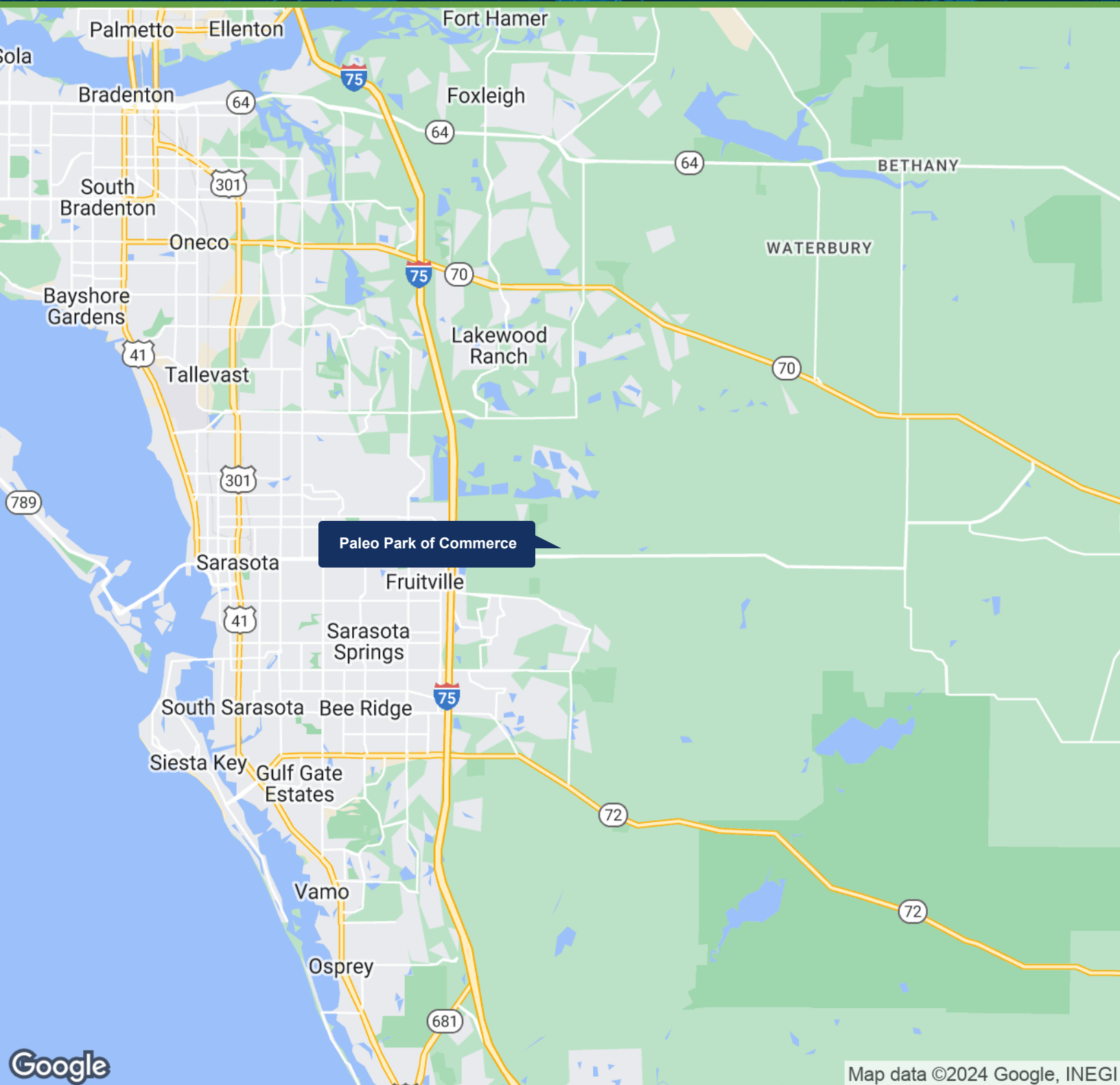
We obtained the information above from sources we believe to be reliable. However, we have not verified its accuracy and make no guarantee, warranty or representation about it. It is submitted subject to the possibility of errors, omissions, change of price, rental or other conditions, prior sale, lease or financing, or withdrawal without notice. We include projections, opinions, assumptions or estimates for example only, and they may not represent current or future performance of the property. You and your tax and legal advisors should conduct your own investigation of the property and transaction.

Paleo Park of Commerce

FOR SALE

0 UZITA DRIVE, SARASOTA, FL 34240

Land



Google

Map data ©2024 Google, INEGI



Theresa Blauch-Mitchell, CCIM
1922 VICTORIA AVE STE A FT MYERS, FL 33901
239.265.2628
theresa@ccim.net
FL #BK3202944

Each office independently owned and operated.

We obtained the information above from sources we believe to be reliable. However, we have not verified its accuracy and make no guarantee, warranty or representation about it. It is submitted subject to the possibility of errors, omissions, change of price, rental or other conditions, prior sale, lease or financing, or withdrawal without notice. We include projections, opinions, assumptions or estimates for example only, and they may not represent current or future performance of the property. You and your tax and legal advisors should conduct your own investigation of the property and transaction.

www.SperryCGA.com