



Property highlights

- ±9,544 SF flex/office space available
- Located on Sand Lake Road with immediate access to Orange Blossom Trail (US 441), John Young Parkway, the Florida Turnpike, SR 528 (Beachline), and Interstate-4
- Ample parking with 4.00/1,000 sf parking ratio
- Minutes from an abundance of retail and restaurants
- Short drive from points of interest such as The Florida Mall, Icon Park, Universal Orlando Resort



Easy access to major thoroughfares



Monument and building signage available



Management office within close proximity



Tremendous exposure on Sand Lake Road

Asking Rate - \$14.00/ SF NNN | \$4.80/SF CAM

For further information

Nathan Eissler, CCIM, SIOR

Principal
+1 407 440 6658
nathan.eissler@avisonyoung.com

Gunner Leslie

Vice President
+1 407 949 2100
gunner.leslie@avisonyoung.com

avisonyoung.com

Flex/Office Space | For Lease

Chancellor Square
8100-8150 Chancellor Dr. | 2400 Sand Lake Rd.
Orlando, FL 32809



For further information

Nathan Eissler, CCIM, SIOR
Principal
+1 407 440 6658
nathan.eissler@avisonyoung.com

Gunner Leslie
Vice President
+1 407 949 2100
gunner.leslie@avisonyoung.com

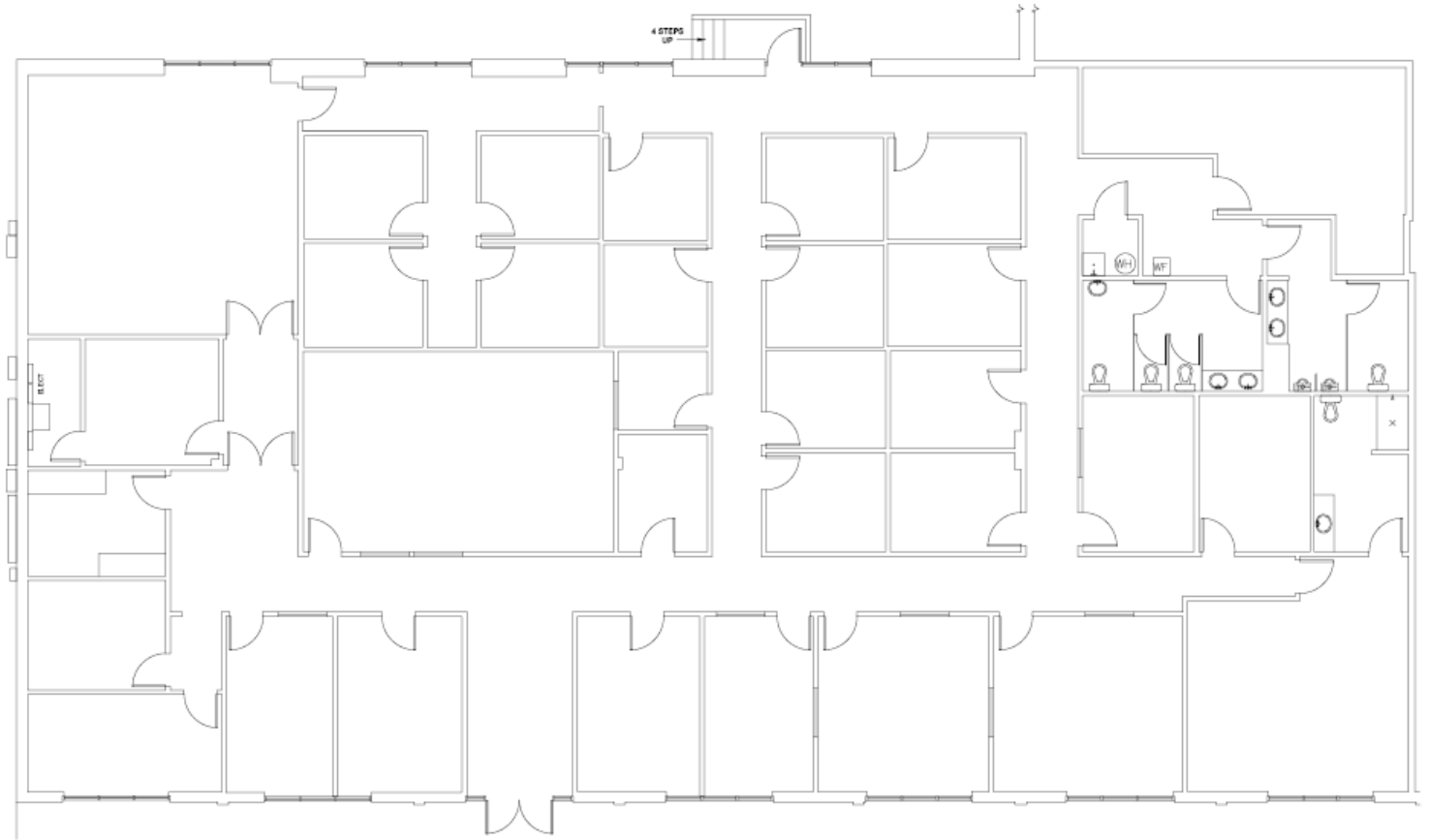
avisonyoung.com

Flex/Office Space | For Lease

Chancellor Square
8100-8150 Chancellor Dr. | 2400 Sand Lake Rd.
Orlando, FL 32809

2400 - Suite 777
4,500± SF - 9,544± SF

* Space can be subdivided



For further information

Nathan Eissler, CCIM, SIOR
Principal
+1 407 440 6658
nathan.eissler@avisonyoung.com

Gunner Leslie
Vice President
+1 407 949 2100
gunner.leslie@avisonyoung.com

avisonyoung.com