

# NORTH RIVER COMMERCE CENTER

26,201 SF AVAILABLE FOR LEASE

10105 NW 88th Ave, Medley, FL 33178



## PROPERTY DESCRIPTION

**North River Commerce Center** consists of 11 tilt-up concrete dock-high buildings, perfect for distribution or manufacturing. With a minimum unit size of 5,000 square feet, fully air-conditioned office space, 20 - 24' clear ceilings, and 150' truck courts, **NRCC** provides functional industrial warehouse space within the Medley industrial market.

## LOCATION DESCRIPTION

Situated on a major Highway such as Okeechobee Road, North River Commerce Center offers convenient access to all major thoroughfares and excellent frontage and exposure. Located on NW South River Drive between NW 89th Avenue and NW 87th Avenue. **NRCC** is only minutes from the Florida Turnpike and Palmetto Expressway via Okeechobee Road, which provides access to every highway and port in the county. Miami International Airport and PortMiami are accessible within minutes from Dolphin Expressway, Broward County, and Port Everglades from I-75 and I-95.

## PROPERTY FEATURES

- +/- 26,201 Sq. Ft. Total Size
- +/- 1,300 Sq. Ft. Office
- +/- 24,901 Sq. Ft. Warehouse
- Ten (10) Dock High Positions
- 20' Clear Ceiling Height
- Fully Fire Sprinkled Building
- Twin-T Roof Construction
- Ample Parking
- Outside the Wellfield Protected Area

## MORE INFORMATION

**Alexander Bernaldo, SIOR**  
President  
786.337.7877  
Alex@AmericasCRE.com

**Michael Silva, SIOR**  
Vice President  
786.337.7881  
mike@americascre.com



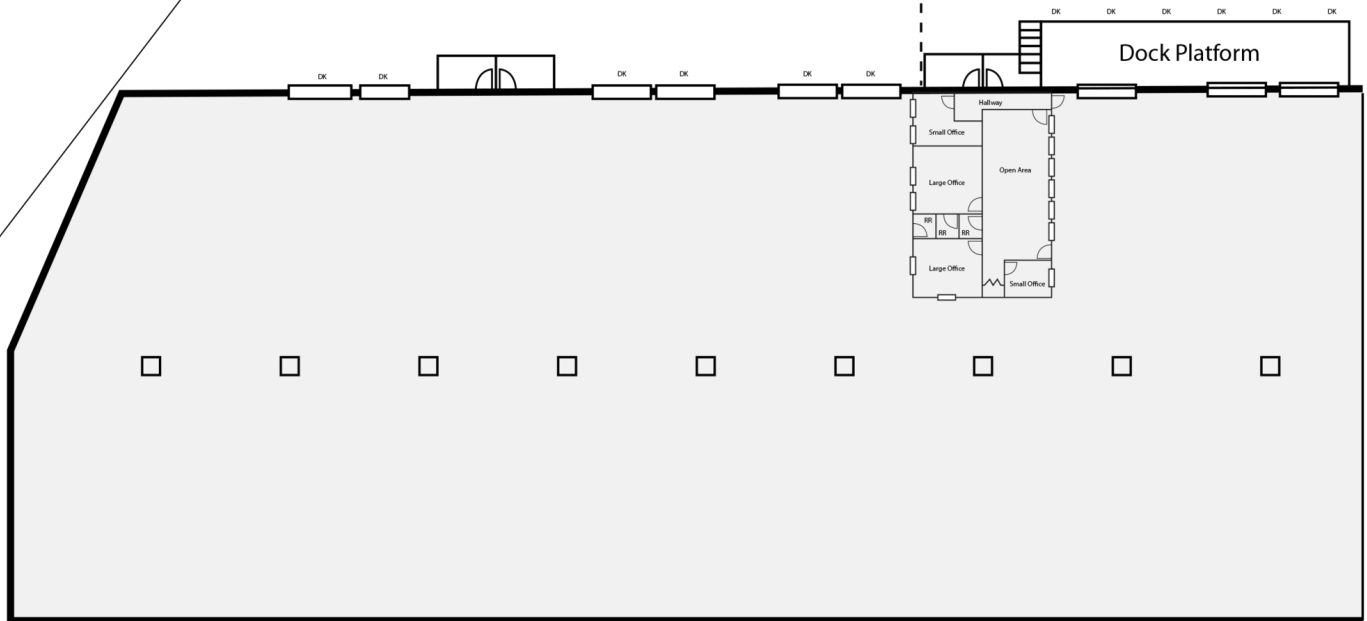
# NORTH RIVER COMMERCE CENTER

26,201 SF AVAILABLE FOR LEASE

10105 NW 88th Ave, Medley, FL 33178

Fenced  
Loading Area

Dock Platform



## MORE INFORMATION

**Alexander Bernaldo, SIOR**  
President  
786.337.7877  
Alex@AmericasCRE.com

**Michael Silva, SIOR**  
Vice President  
786.337.7881  
mike@americascre.com



Copyright © 2023 Americas Commercial Real Estate. Any information herewith is obtained from sources we consider reliable. However, we are not responsible for misstatement of facts, errors, omissions, prior sale, withdrawal from the market, modification of mortgage commitment, terms and conditions, or change in price without prior notice.