

NORTH RIVER COMMERCE CENTER

+/- 21,525 SF AVAILABLE FOR LEASE

8760-80 NW 101st St, Medley, FL 33178



PROPERTY DESCRIPTION

North River Commerce Center consists of 11 tilt-up concrete dock-high buildings, perfect for distribution or manufacturing. With a minimum unit size of 5,000 square feet, fully air-conditioned office space, 20 - 24' clear ceilings, and 150' truck courts, **NRCC** provides functional industrial warehouse space within the Medley industrial market.

LOCATION DESCRIPTION

Situated on a major Highway such as Okeechobee Road, North River Commerce Center offers convenient access to all major thoroughfares and excellent frontage and exposure. Located on NW South River Drive between NW 89th Avenue and NW 87th Avenue. **NRCC** is only minutes from the Florida Turnpike and Palmetto Expressway via Okeechobee Road, which provides access to every highway and port in the county. Miami International Airport and PortMiami are accessible within minutes from Dolphin Expressway, Broward County, and Port Everglades from I-75 and I-95.

PROPERTY FEATURES

- +/- 21,525 Sq. Ft. Total Size
- +/- 610 Sq. Ft. Office
- +/- 20,915 Sq. Ft. Warehouse
- Seven (7) Dock High Loading Doors
- One (1) Ramp Loading Door
- 20' Clear Ceiling Height
- 3 Phase Electrical Service
- 400 AMPS - 120/208V & 200 AMPS - 120/208V
- Twin-T Roof Construction
- Outside the Wellfield Protected Area

MORE INFORMATION

Alexander Bernaldo, SIOR
President
786.337.7877
Alex@AmericasCRE.com

Michael Silva, SIOR
Vice President
786.337.7881
mike@americascre.com



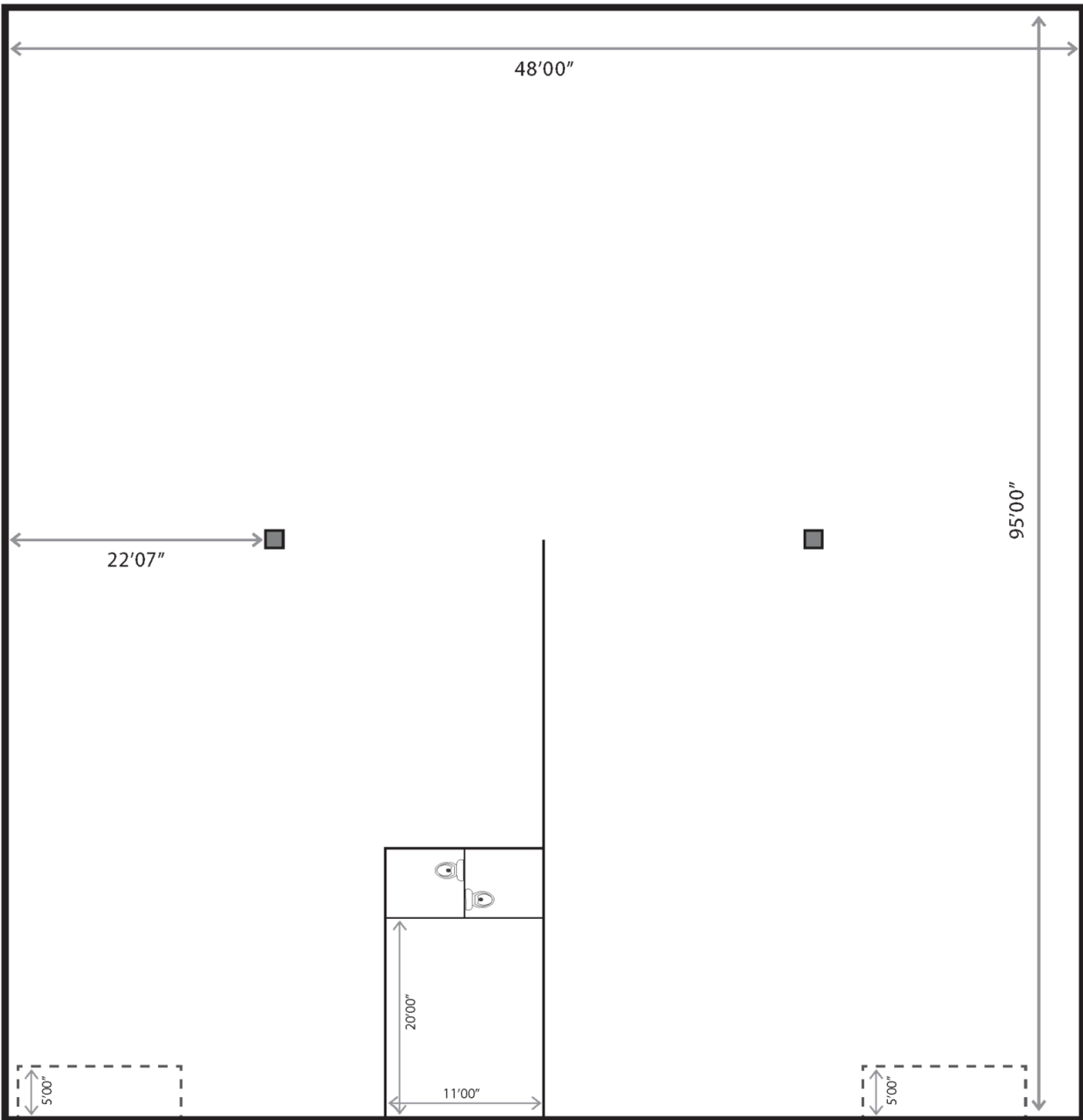
NORTH RIVER COMMERCE CENTER

8760-80 NW 101st St, Medley, FL 33178

Total Size: 10,080 Sq. Ft.

Total Warehouse: 9,780 Sq. Ft.

Total Office: 300 Sq. Ft.



MORE INFORMATION

Alexander Bernaldo, SIOR
President
786.337.7877
Alex@AmericasCRE.com

Michael Silva, SIOR
Vice President
786.337.7881
mike@americascre.com

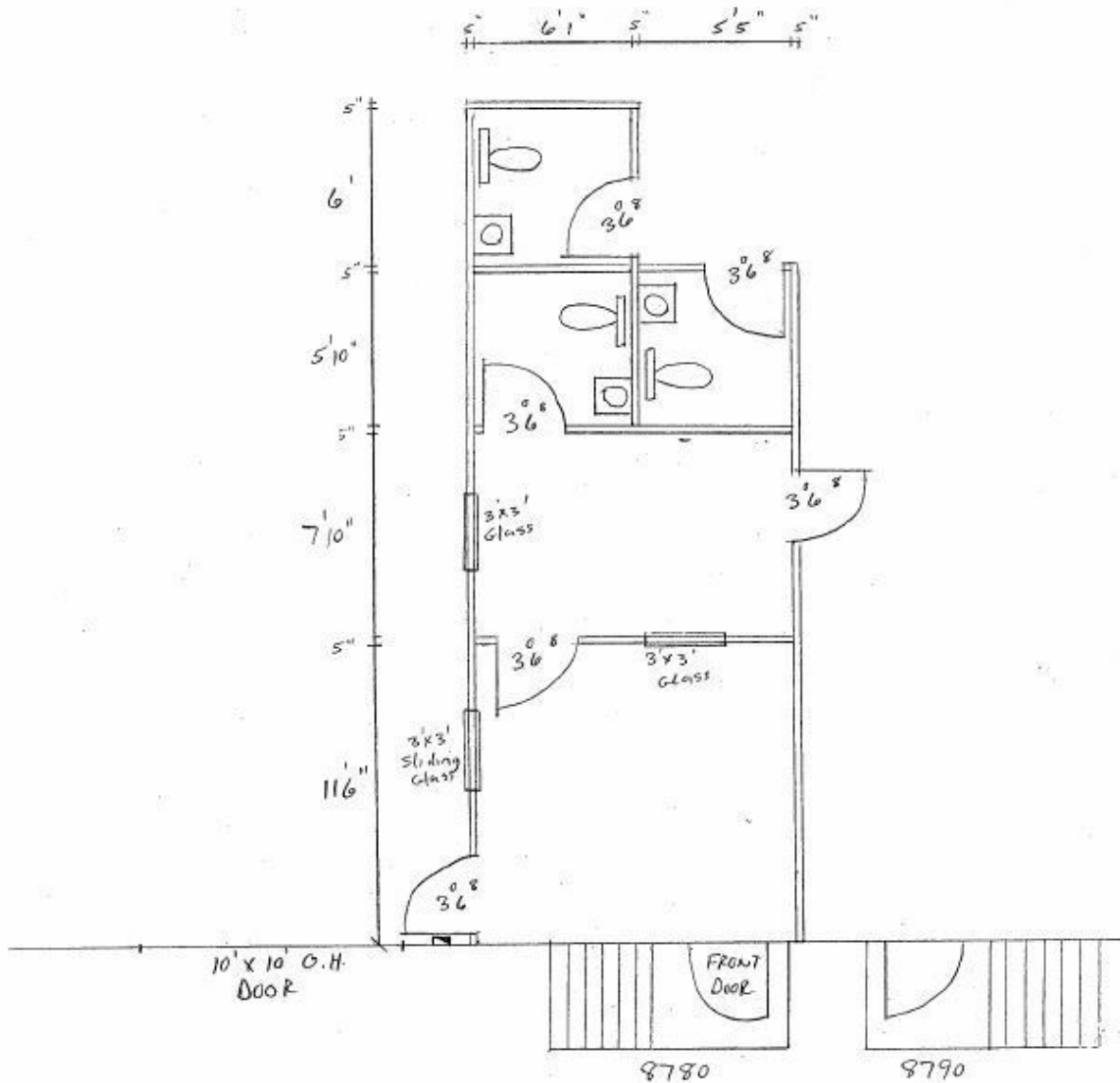


Copyright © 2023 Americas Commercial Real Estate. Any information herewith is obtained from sources we consider reliable. However, we are not responsible for misstatement of facts, errors, omissions, prior sale, withdrawal from the market, modification of mortgage commitment, terms and conditions, or change in price without prior notice.

NORTH RIVER COMMERCE CENTER

8760-80 NW 101st St, Medley, FL 33178

8780 N.W. 101 ST.



MORE INFORMATION

Alexander Bernaldo, SIOR
President
786.337.7877
Alex@AmericasCRE.com

Michael Silva, SIOR
Vice President
786.337.7881
mike@americascre.com

