

FOR LEASE

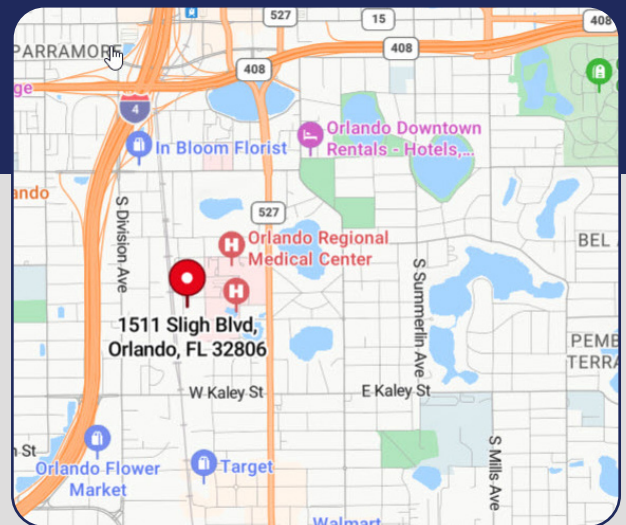


MEDICAL OFFICE SPACE

1511 Sligh Boulevard, Orlando, FL 32806

2,500 SF AVAILABLE

- > 2,500 SF available in Suite B
- > Ideal location for medical office
- > Within walking distance to Orlando Regional Medical Center and Winnie Palmer Hospital
- > Move-in condition with June occupancy
- > Excellent parking at 12 spaces plus additional on street
- > Street signage
- > Expenses estimated at \$4.17/SF
- > **\$30.00/SF, NNN**



Bill Bywater, CCIM

D 407.206.5736

O 407.206.7300

bill@bywater.com



1209 Edgewater Drive

Suite 100

Orlando, FL 32804

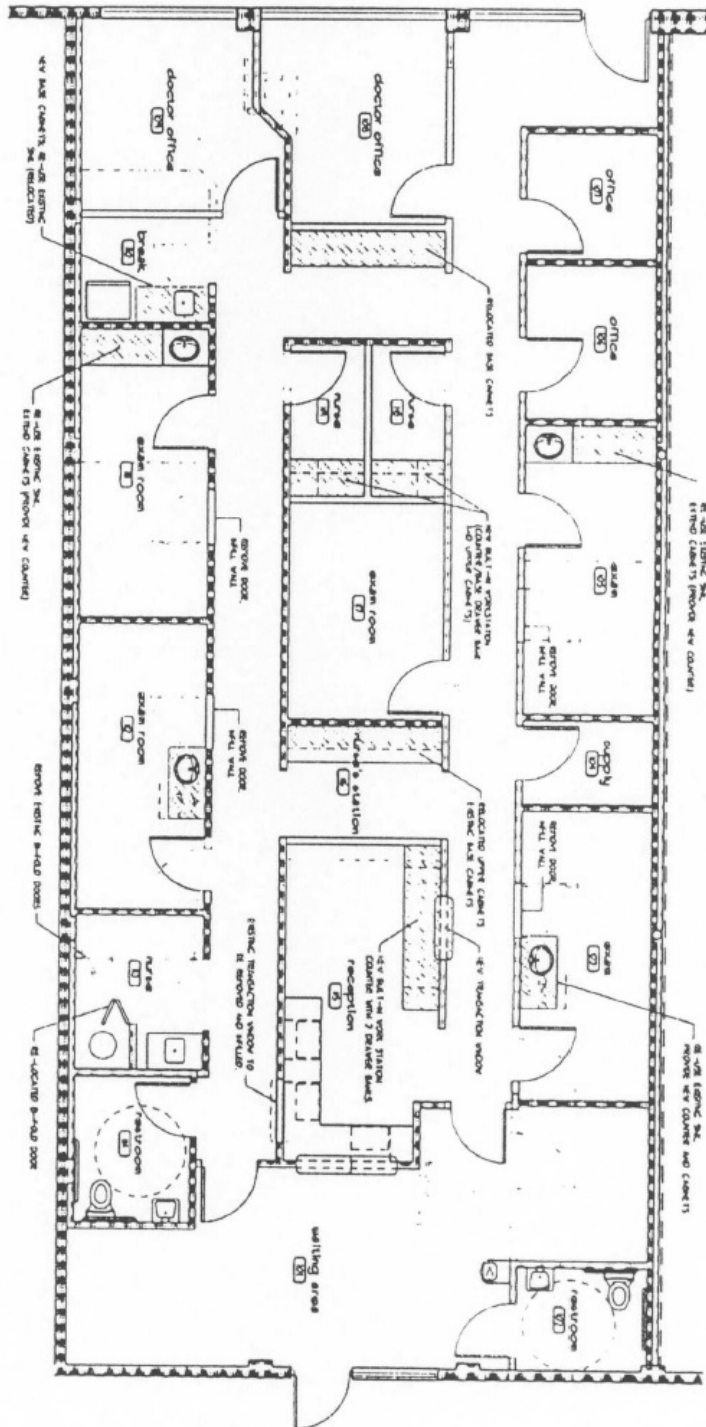
407.206.7300 Main

www.bywater.com

MEDICAL OFFICE SPACE

1511 Sligh Boulevard, Orlando, FL 32806

FLOORPLAN

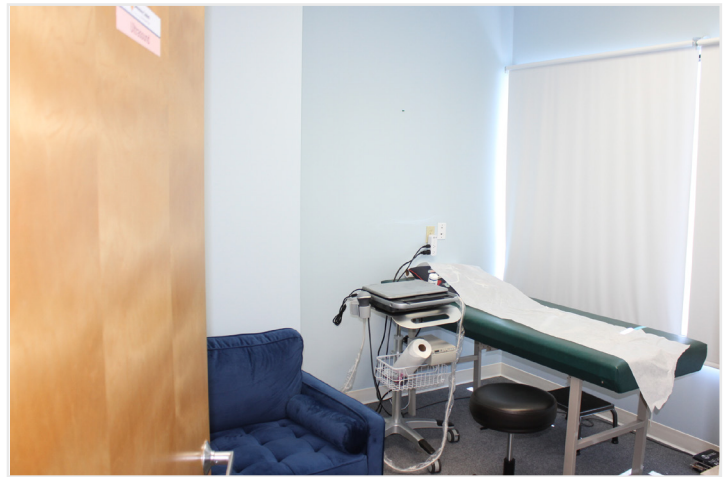


1209 Edgewater Drive, Suite 100 | Orlando, FL 32804 | 407.206.7300 | www.bywater.com

The information contained herein was obtained from sources deemed reliable and is assumed to be correct. It is not guaranteed by The Bywater Company.

MEDICAL OFFICE SPACE

1511 Sligh Boulevard, Orlando, FL 32806



1209 Edgewater Drive, Suite 100 | Orlando, FL 32804 | 407.206.7300 | www.bywater.com

The information contained herein was obtained from sources deemed reliable and is assumed to be correct. It is not guaranteed by The Bywater Company.