

For Lease

# South Park Business Center

Flex / Office / Warehouse Space | \$14.00/SF NNN



## 8600 Commodity Circle

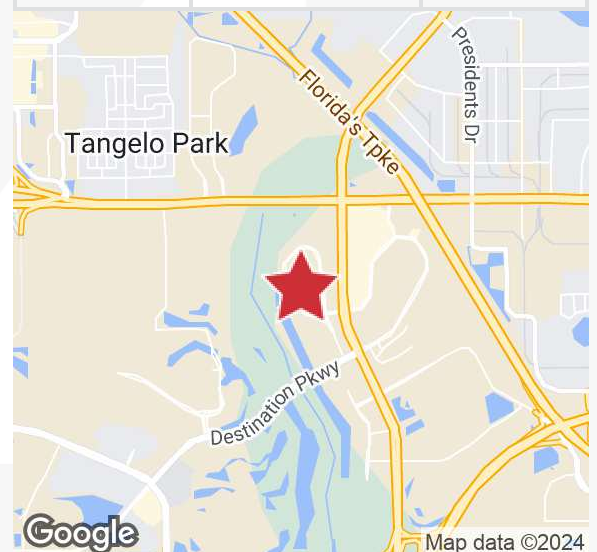
Orlando, Florida 32819

### Property Highlights

- South Park Business Center is over 150,000± SF of commercial flex/office/warehouse units
- Solid, tilt-wall concrete construction; each unit is grade-level and has a large roll up door
- Group II (Ordinary Hazard) fire sprinkler system
- Clear height: 18' (less sprinklers)
- Electrical service: 150 amp, 120/208 volt, 3-phase
- Glass storefront and doors; Exterior site lighting; Parking: 2.4/1,000 SF
- Zoning: I-2 / I-3, Light Industrial, Orange County
- Just southwest of John Young Parkway and Sand Lake Rd
- Offers easy access to SR 528 (Beachline), I-4, Florida's Turnpike, SR 417 (GreeneWay), SR 408 (East-West), US Hwy 17-92, International Drive and Orlando International Airport
- Close to Orange County Convention Center, Universal Studios, Sea World, Florida Mall, Mall at Millenia and Downtown Orlando

### AVAILABLE SPACES

Space	Lease Rate	Size (SF)
<b>Suite 162</b>	<b>\$14.00 SF/yr</b>	<b>2,499</b>

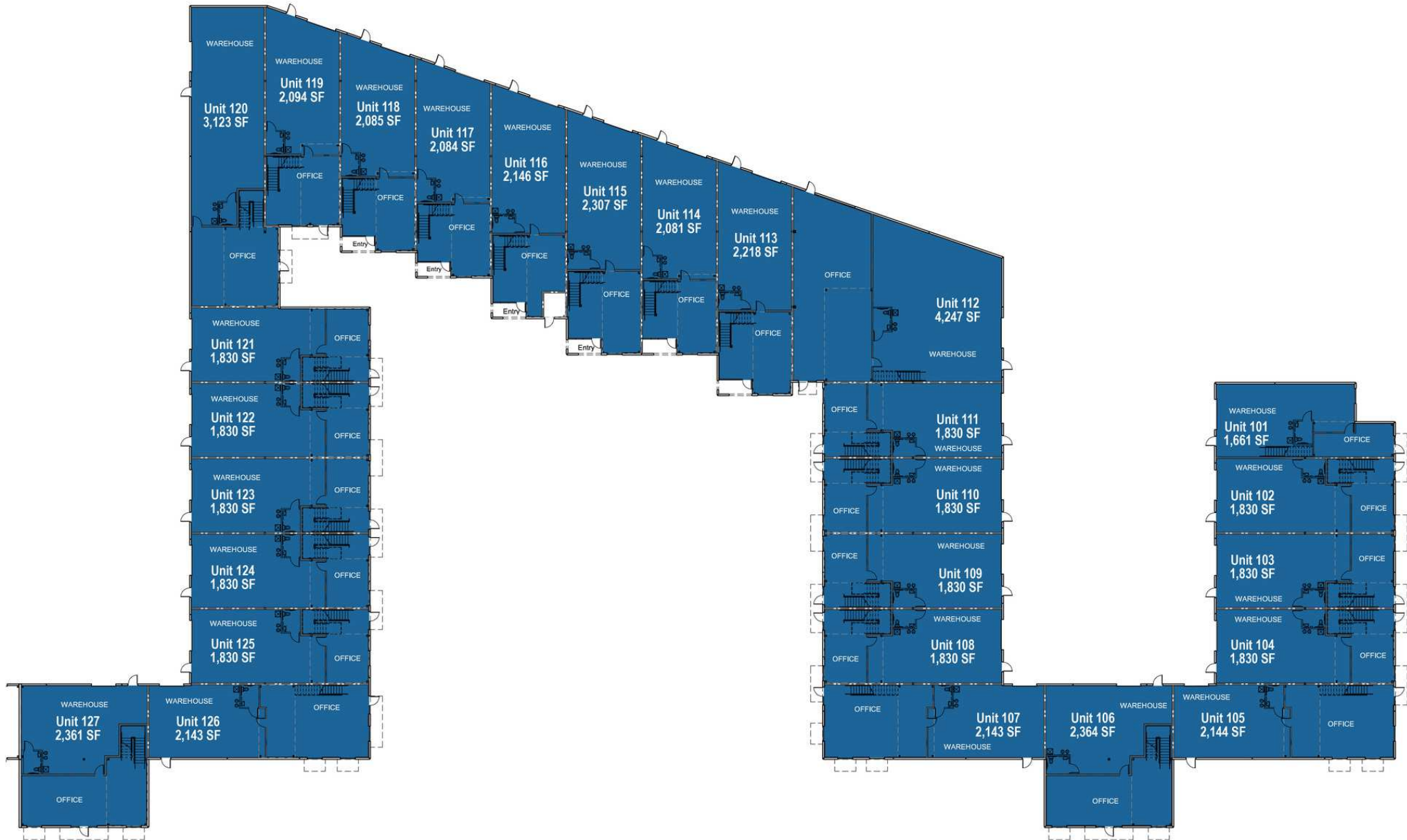


For more information

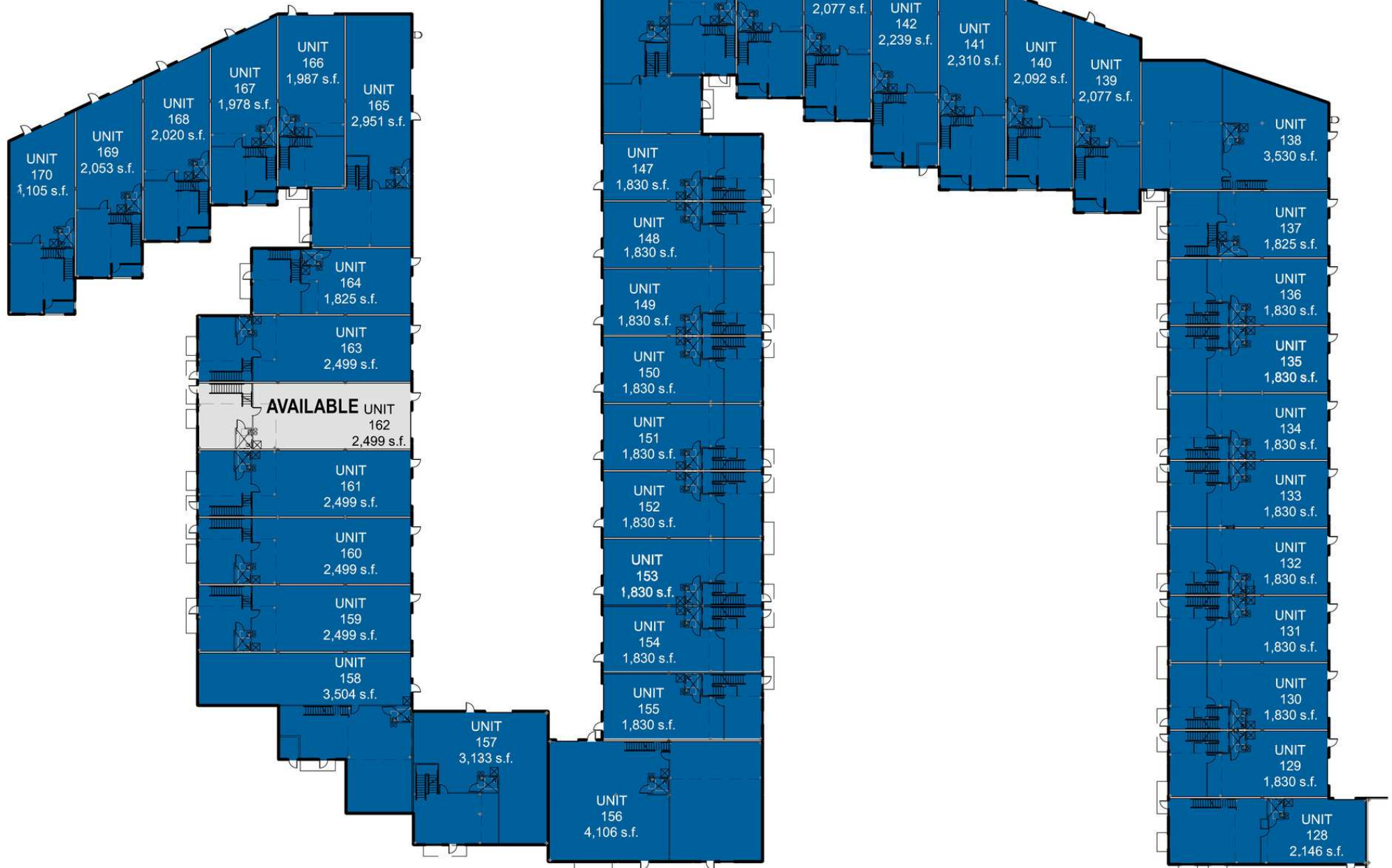
**Tom R. Kelley II, CCIM**

O: 407 949 0715  
tkelley@realvest.com

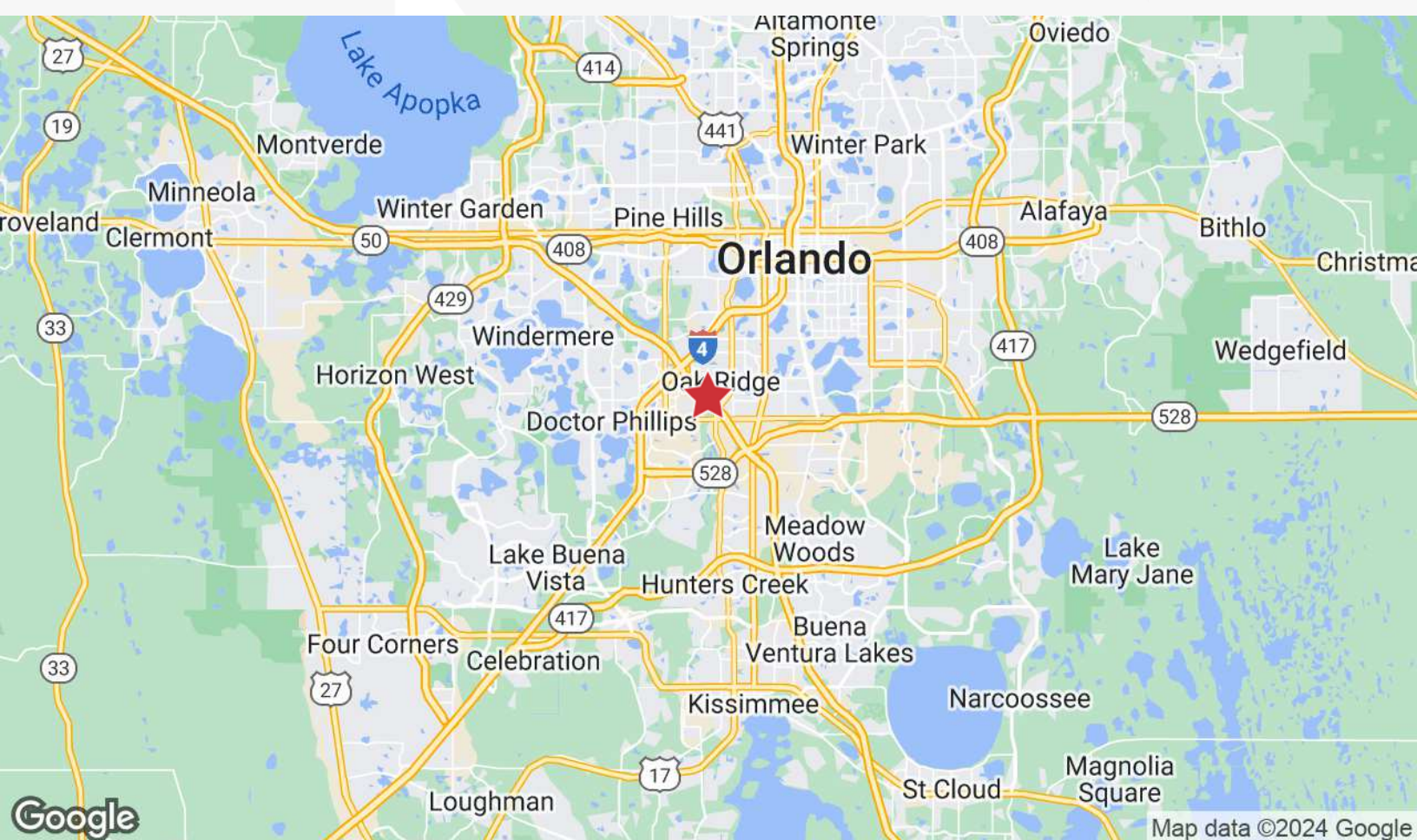
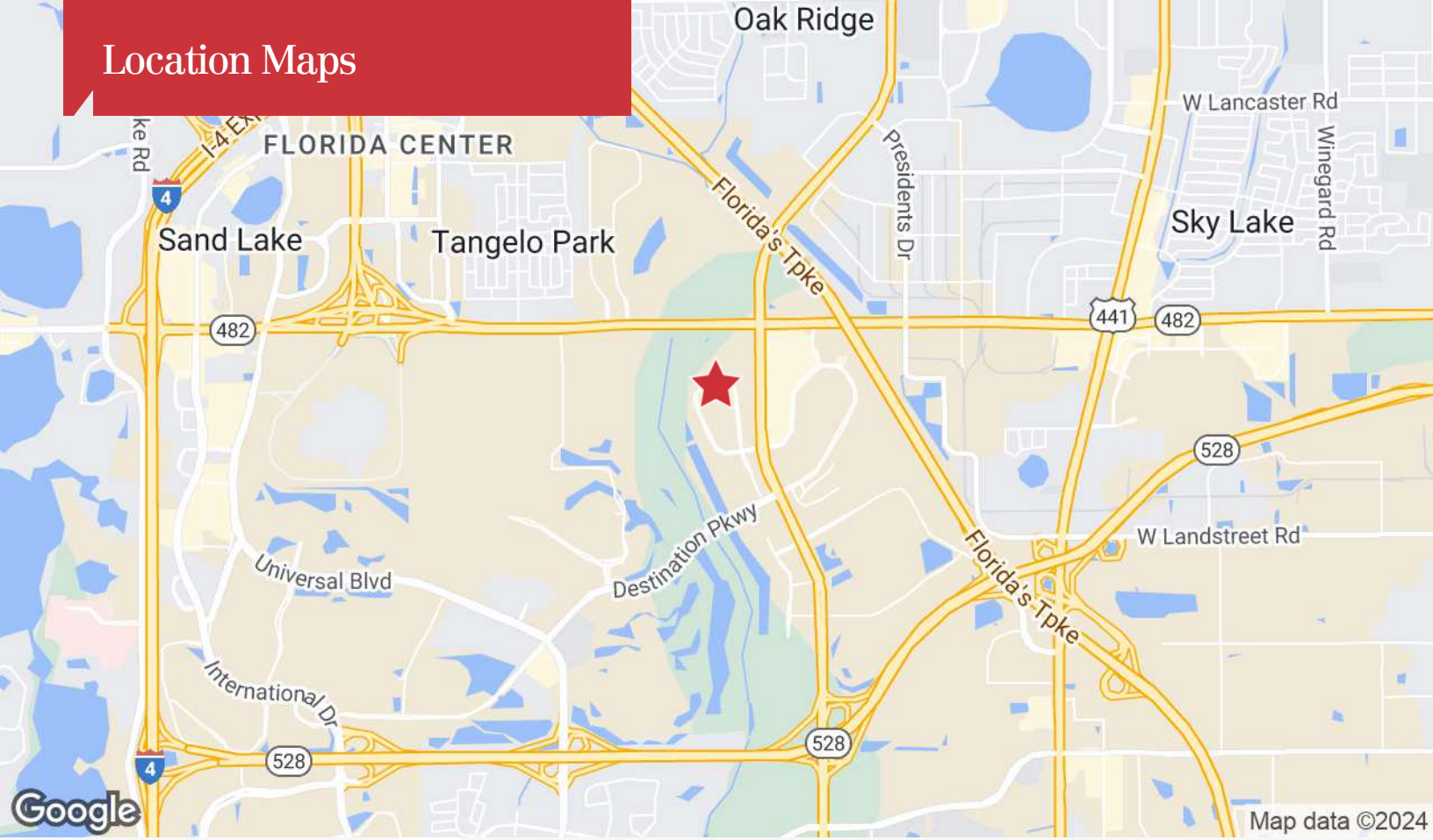
# South Park - Phase I - Fully Leased



# South Park - Phase II & III



# Location Maps



The information contained herein has been given to us by the owner of the property or other sources we deem reliable. We have no reason to doubt its accuracy, but we do not guarantee it. All information should be verified prior to purchase or lease. Unless otherwise noted, the property is being offered as-is, where is, with all faults.

1800 Pembroke Drive, Suite 350  
Orlando, FL 32810  
407 875 9989 tel  
[nairealvest.com](http://nairealvest.com)