

2380 Vantage Drive
Elgin, IL 60124

For Lease

MLS #12050923

INDUSTRIAL



INDUSTRIAL SPACE 19,570 SF

\$8.95 PSF (NNN)

INDUSTRIAL SPACE
19,570 SF

Located just north of the I-90 / Randall Road interchange in the desirable Northwest Corporate Park. Part of a 49,936 SF well maintained, 3 tenant industrial building

UNIT 2380: 19,570 SF with ±3,500 SF office with 13' ceilings, 4 private offices (one with private bathroom w/shower), reception area and open showroom with the potential to accommodate up to 24 cubicles for additional office use. Coffee bar and 2 ADA bathrooms.

The ±16,070 SF warehouse has 24' ceilings, 400 amp 480V, 3 phase power, 2 docks w/ levelers, one 12'x14' DID, 2 baths and a breakroom.

Available October 1, 2024.

Specifications

Year Built:	2006
HVAC System:	GFA (ceiling Hung) Warehouse Central Air (office)
Electrical:	400 amp 480V 3 Phase
Sprinklers:	Yes
Washrooms:	Office: 3 (1 w/ shower) Warehouse: 2
Ceiling Height:	13' (office) 24' (warehouse)
Parking:	75 Common
DID:	1 (12'x14')
Docks:	2 w/ Levelers
Sewer/Water:	City
Zoning:	PORI
CAM & Taxes	Cam: \$0.75 psf Taxes: \$2.27 psf
PIN #:	03-30-251-029

[CLICK HERE TO VIEW OUR WEBSITE](#)

No warranty or representation is made as to the accuracy of the foregoing information. Terms of sale or lease and availability are subject to change or withdrawal without notice. This document is for information purposes only. No offer of sub-agency is being made.



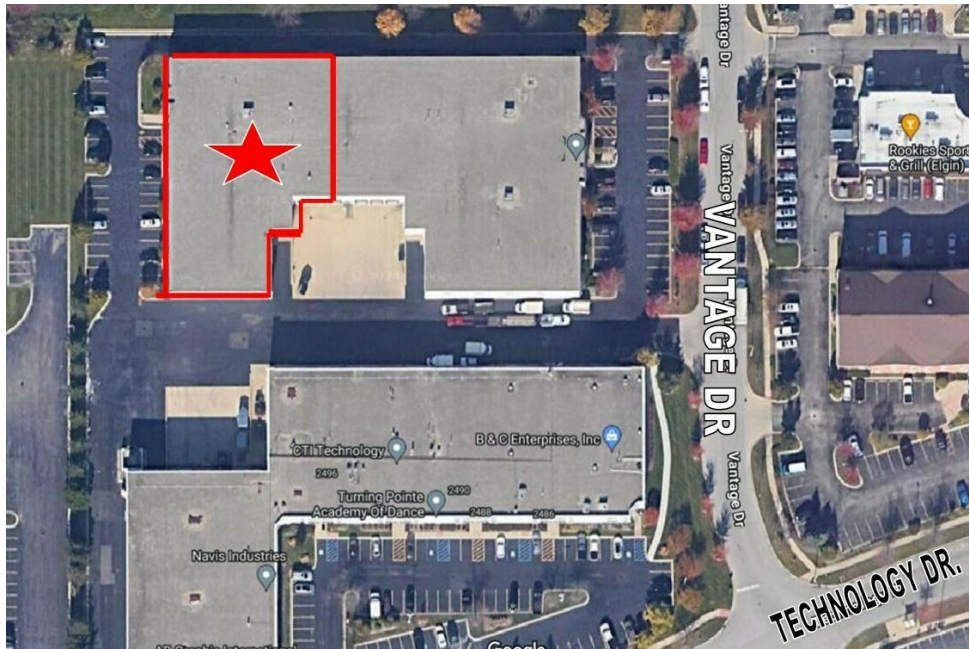
www.PremierCommercialRealty.com | 847.854.2300 | 9225 S. Route 31, Lake in the Hills, IL 60156

VP / Designated Managing Broker
Heather Schweitzer
HeatherS@PremierCommercialRealty.com
O: 847.854.2300 x15 C: 815.236.9816

2380 Vantage Drive
Elgin, IL 60124

For Lease

INDUSTRIAL



[CLICK HERE TO VIEW OUR WEBSITE](#)

No warranty or representation is made as to the accuracy of the foregoing information. Terms of sale or lease and availability are subject to change or withdrawal without notice. This document is for information purposes only. No offer of sub-agency is being made.

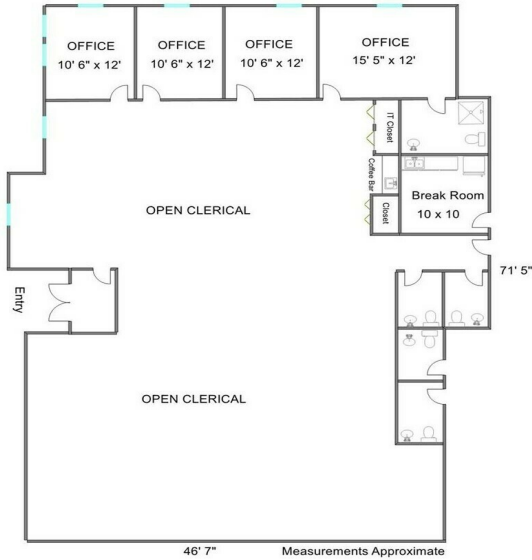


www.PremierCommercialRealty.com | 847.854.2300 | 9225 S. Route 31, Lake in the Hills, IL 60156

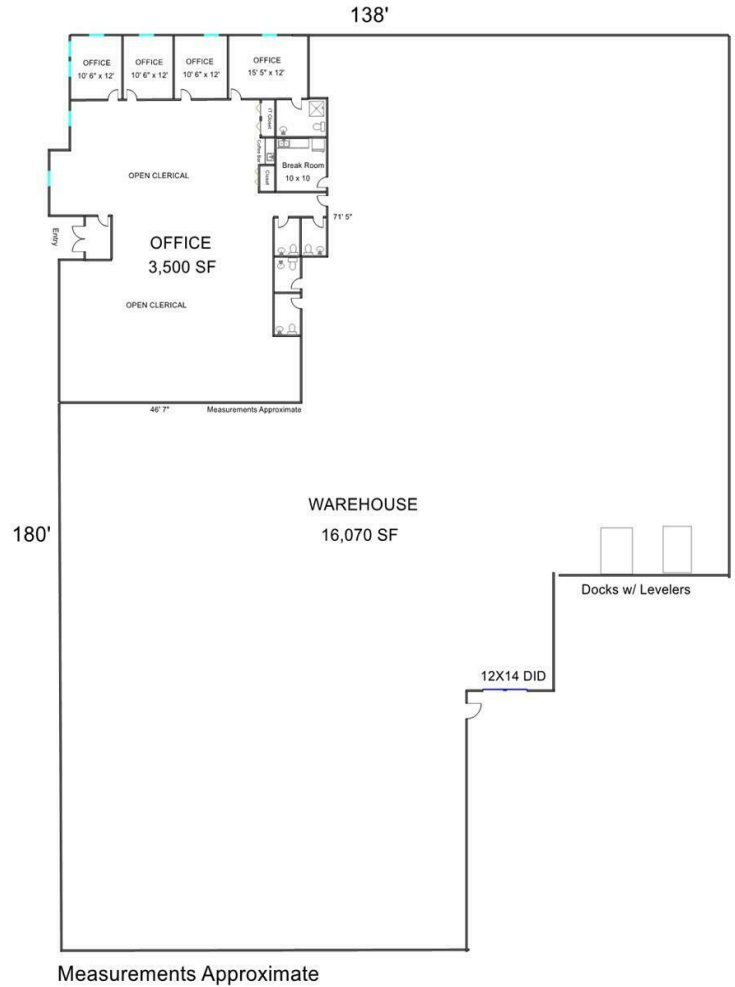
VP / Designated Managing Broker
Heather Schweitzer
HeatherS@PremierCommercialRealty.com
O: 847.854.2300 x15 C: 815.236.9816

INDUSTRIAL

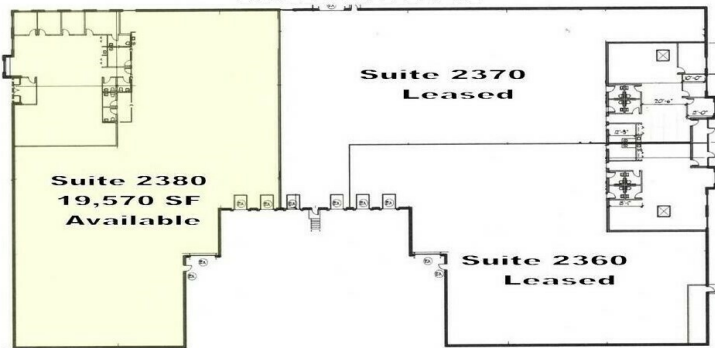
OFFICE DETAIL



UNIT 2380 / 19,570 SF



BUILDING DETAIL



[CLICK HERE TO VIEW OUR WEBSITE](#)

No warranty or representation is made as to the accuracy of the foregoing information. Terms of sale or lease and availability are subject to change or withdrawal without notice. This document is for information purposes only. No offer of sub-agency is being made.



2380 Vantage Drive
Elgin, IL 60124

For Lease

INDUSTRIAL



[CLICK HERE TO VIEW OUR WEBSITE](#)

No warranty or representation is made as to the accuracy of the foregoing information. Terms of sale or lease and availability are subject to change or withdrawal without notice. This document is for information purposes only. No offer of sub-agency is being made.



www.PremierCommercialRealty.com | 847.854.2300 | 9225 S. Route 31, Lake in the Hills, IL 60156

VP / Designated Managing Broker
Heather Schweitzer
HeatherS@PremierCommercialRealty.com
O: 847.854.2300 x15 C: 815.236.9816