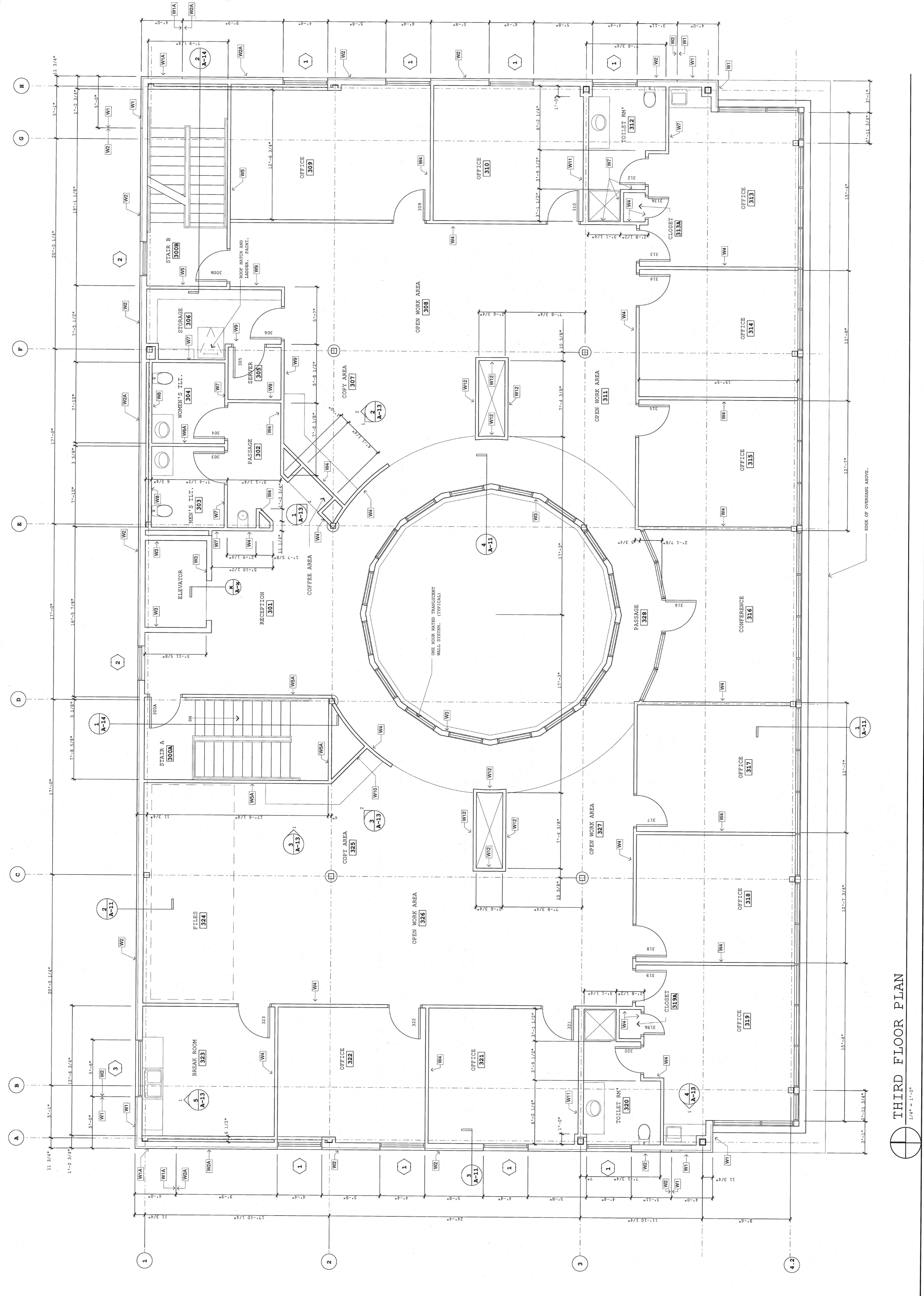


Project No.: 0406
Date: 7/30/04
Drawn By: mco
Revisions:

Third Floor Plan

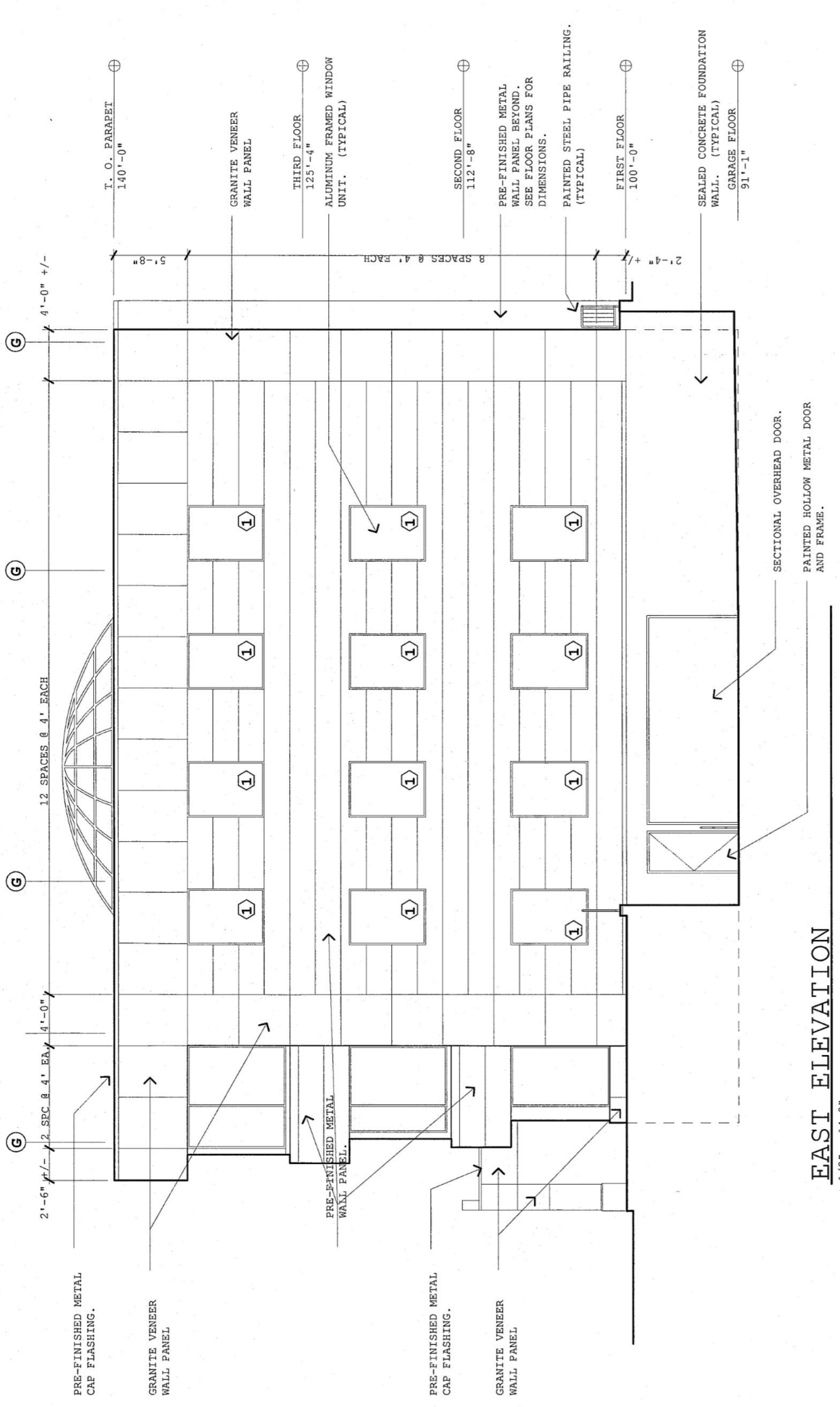
Fidelity Mortgage
722 Belford Avenue
Grand Junction, Colorado
529 25 1/2 Road Grand Junction, Colorado

Michael E. Oney
architect L.L.C.
115 N Fifth Street, Suite 409
Grand Junction, Colorado 81501
(970) 254-9089
meoarch@frontier.net

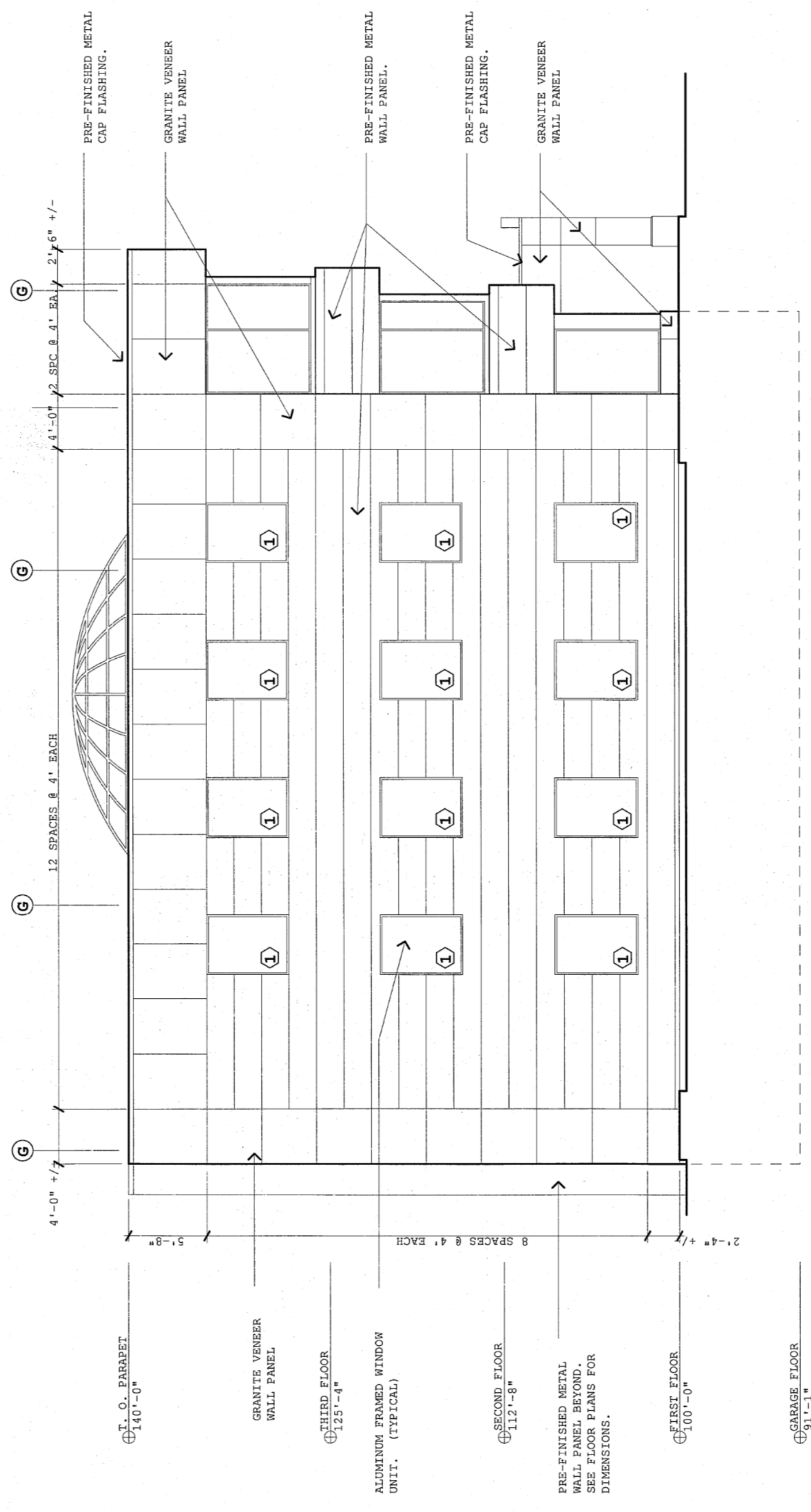


THIRD FLOOR PLAN
1/4" = 1'-0"

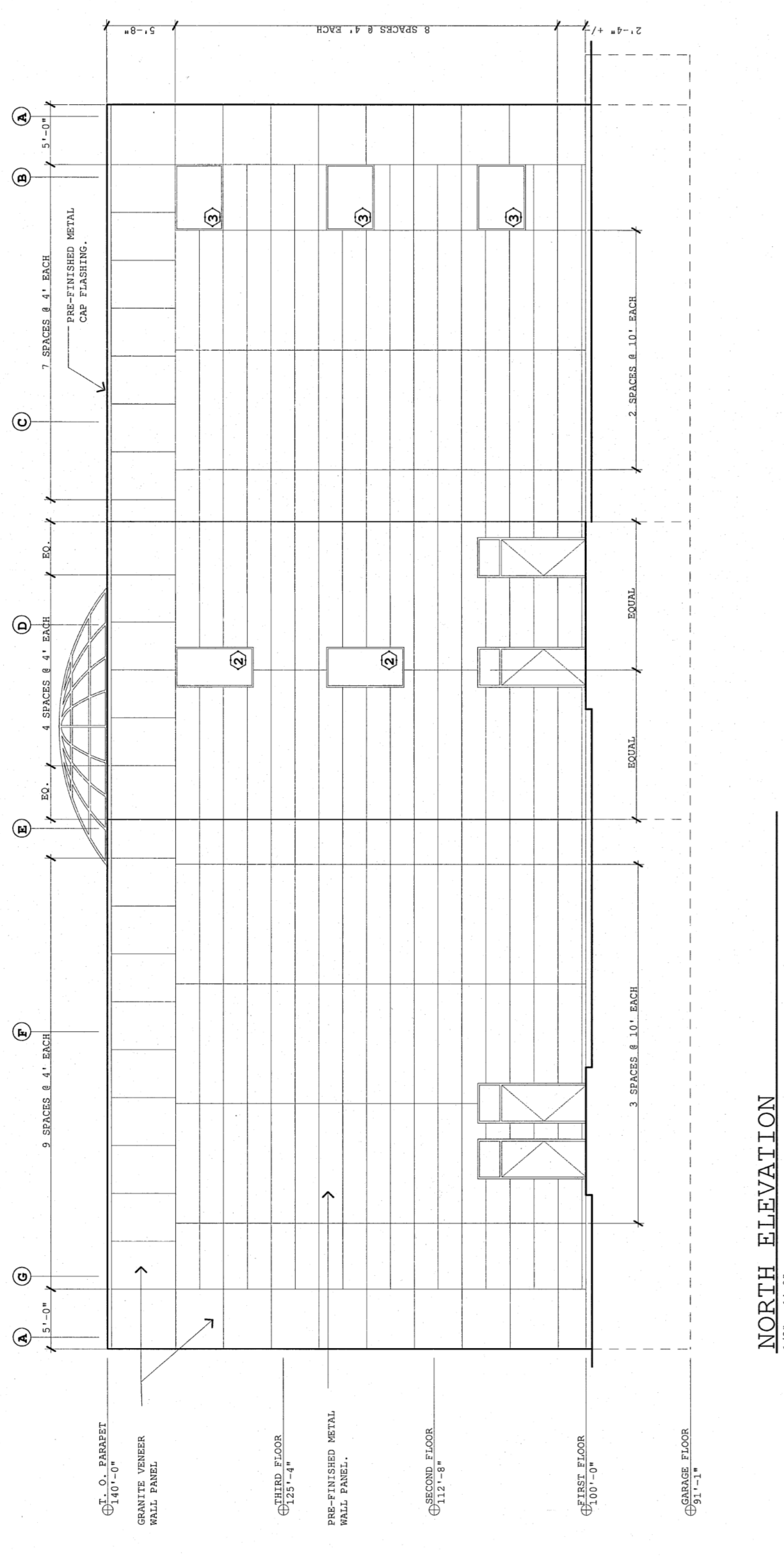
EDGE OF OVERHANG ABOVE.



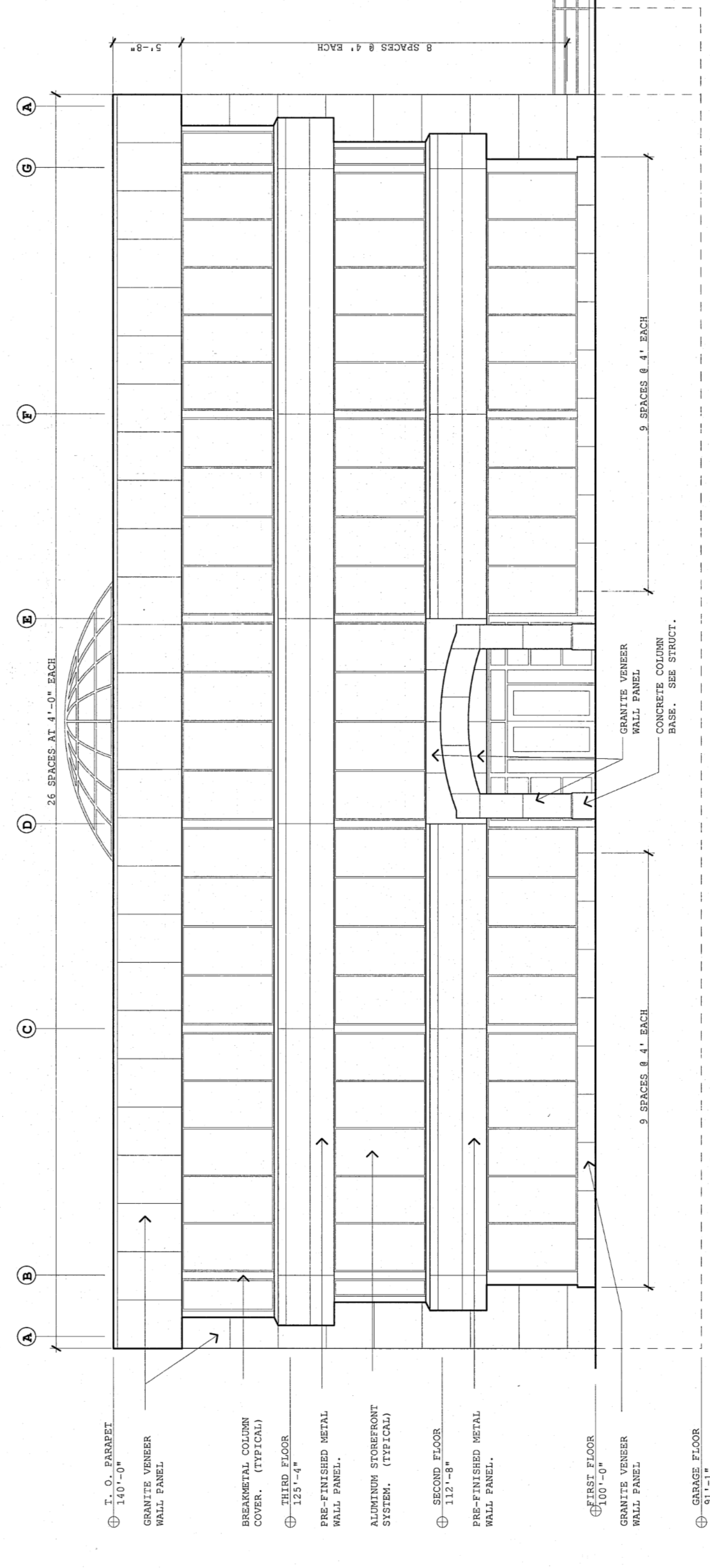
EAST ELEVATION
 1/8" = 1'-0"



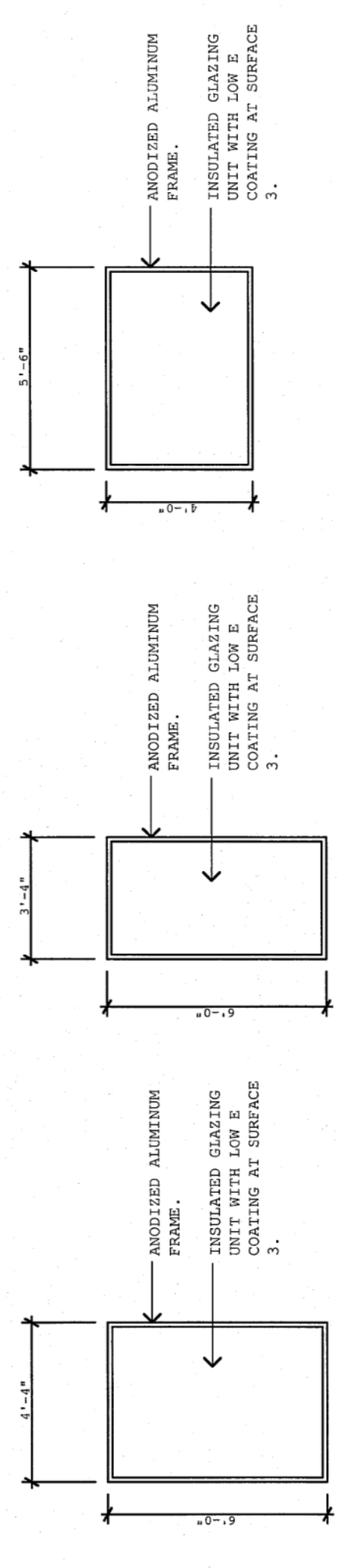
WEST ELEVATION
 1/8" = 1'-0"



NORTH ELEVATION
 1/8" = 1'-0"



SOUTH ELEVATION
 1/8" = 1'-0"



1 2 3

WINDOW TYPES
 1/4" = 1'-0"