



YAMATO OFFICE CENTER



NAI Merin Hunter
Codman, Inc.

Commercial Real Estate Services, Worldwide.

For Lease
±1,067-24,031 SF
Premier Boca Raton
Office/Medical Space

**Move-In Ready Spaces
& Full Floor with Signage**



Yamato Office Center

999 & 1001 Yamato Road
Boca Raton, FL 33431



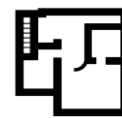
Property Features:

- NEW outdoor seating lounge underway
- Fantastic office space with beautiful lobbies, lush landscaping, and a great corporate park location near the best of Boca Raton
- Amenities include keycard access, tenant conference facility, outside seating area, 24/7 HVAC, and ample parking with covered available
- Separately metered electric at 1001 Yamato
- Direct visibility and access from Yamato Road
- Just 1 minute from I-95, 7 minutes to the Florida Turnpike, and near two major hospitals

Key Highlights:



Fantastic location
near outstanding
lifestyle amenities



Variety of floor
plan sizes to suit
your needs



Medical use
approved

Richard W. Brockney
Director | rbrockney@mhcreal.com

Neil E. Merin, SIOR, CCIM
Chairman | merinlistings@mhcreal.com



FOR LEASE: YAMATO OFFICE CENTER

Move-In Ready Office Space Near I-95

999-1001 YAMATO ROAD, BOCA RATON, FL 33431



Strategic Location with Exceptional Neighboring Amenities

This Class-A office center with medical zoning offers easy access to I-95 and is well-located in a blossoming live-work-play environment with over 2,500 newly developed residential units nearby.

Yamato Office Center is minutes away from countless dining, retail, and lifestyle amenities, with a Tri-Rail stop within walking distance and a planned Brightline stop.



**CLICK HERE
FOR 3D TOURS!**

**COMING
SOON**

NEW Outdoor Lounge

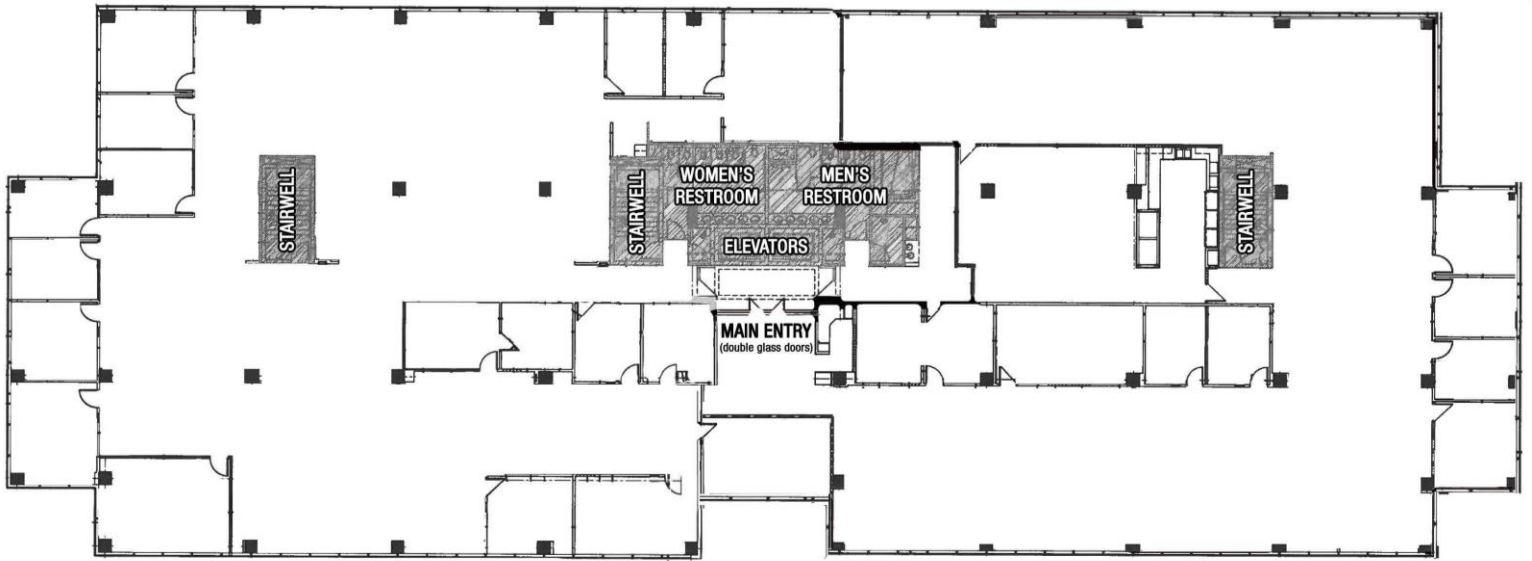


For More Information:

Richard W. Brockney or Neil E. Merin, SIOR, CCIM | 561 471 8000 | www.mhcreal.com

FOR LEASE: YAMATO OFFICE CENTER

Full Floor with Building & Monument Signage Available

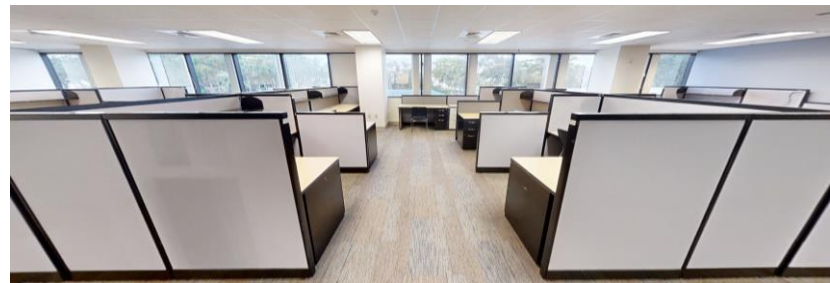


1001 - Suite 200 ±8,000-24,031 SF

- Rare plug & play corporate HQ opportunity, with functional layout & furniture available
- Mostly open plan, divisible from ±8,000 SF
- Multiple signage opportunities
- Abundant natural light through panoramic window lines
- Modern build-out including glass sidelights, diverse meeting rooms, open work areas, a well-equipped kitchen/breakroom with bar and round table seating, and more



CLICK HERE
FOR 3D TOUR!



For More Information:

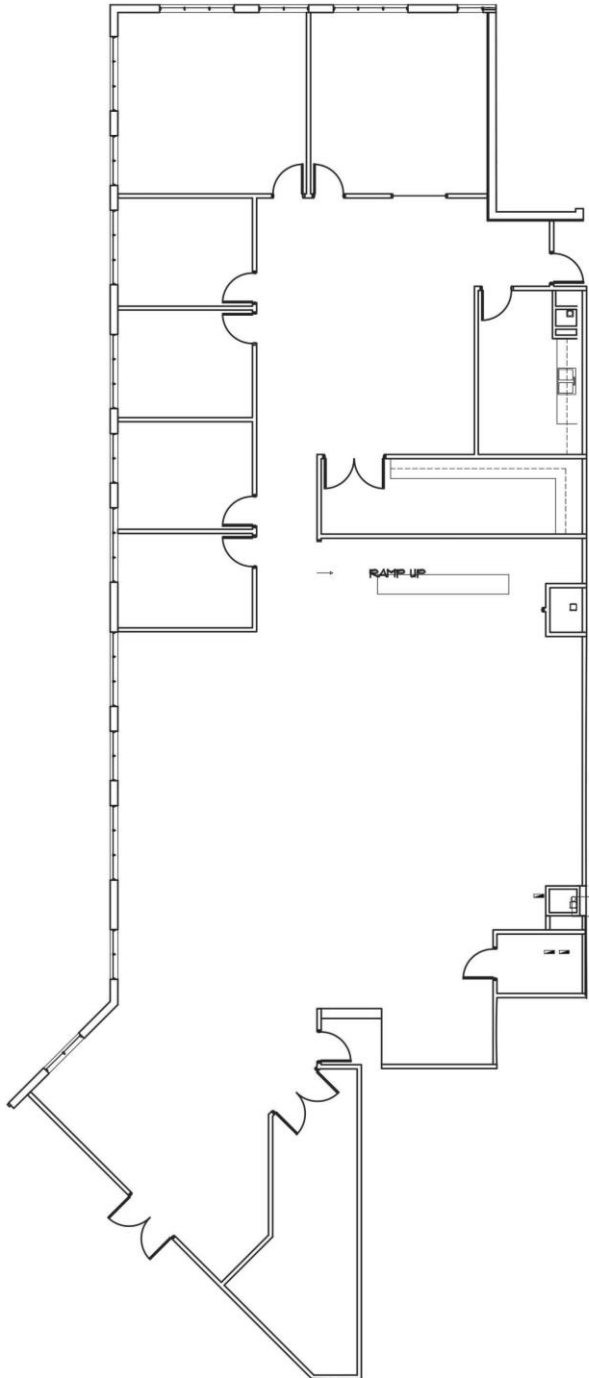
Richard W. Brockney or Neil E. Merin, SIOR, CCIM | 561 471 8000 | www.mhcreal.com

FOR LEASE: YAMATO OFFICE CENTER
Move-In Ready, Ground-Floor Space

999-1001 YAMATO ROAD, BOCA RATON, FL 33431

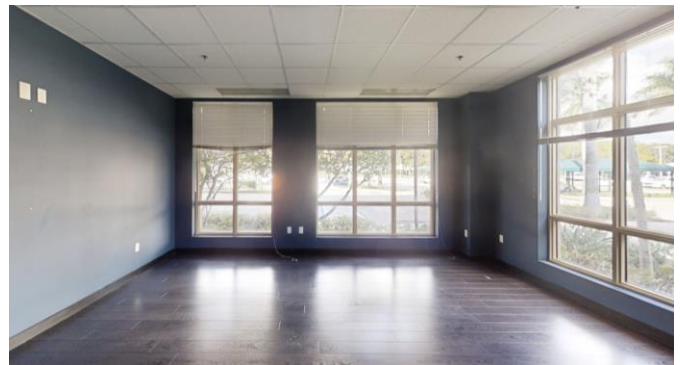


CLICK HERE
FOR 3D TOUR!



999 - Suite 103 ±6,086 SF

- Spacious ground floor office suite, can be converted for medical use
- Double-door entry
- 7 offices
- Workroom with cabinets
- Kitchen/breakroom
- Abundant natural light through floor-to-ceiling windows



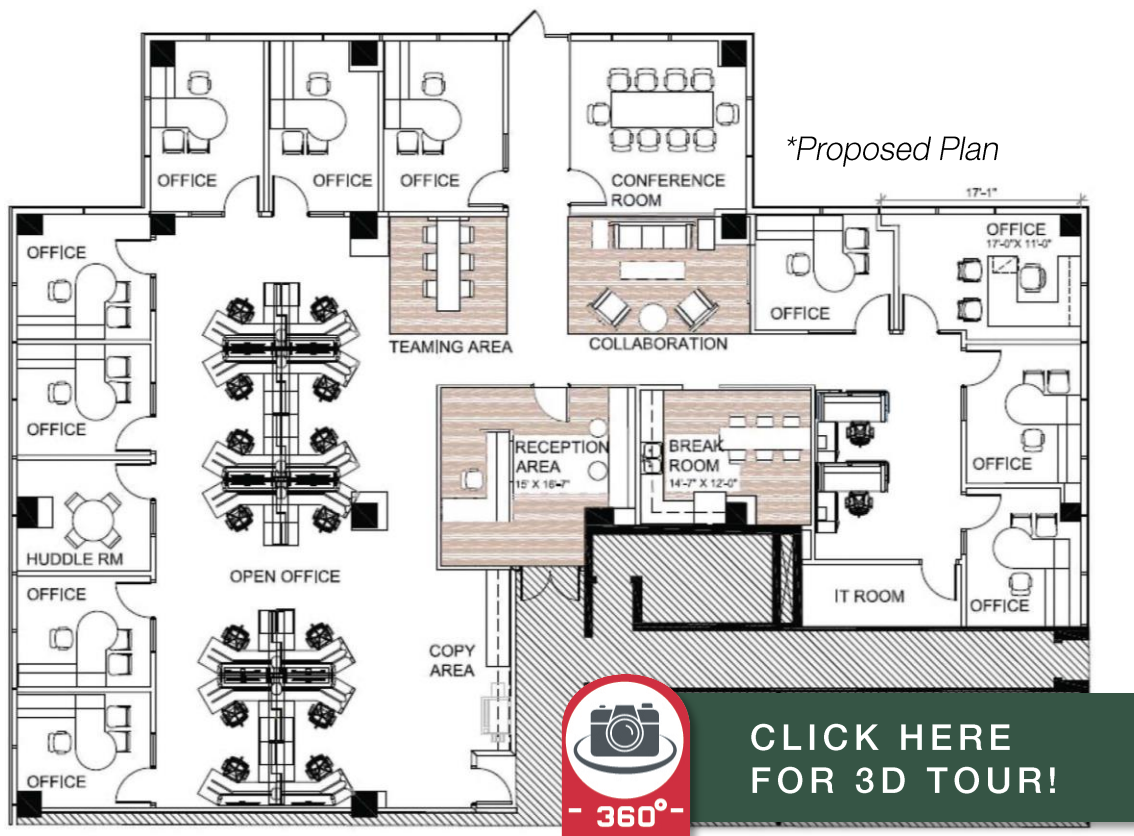
For More Information:

Richard W. Brockney or Neil E. Merin, SIOR, CCIM | 561 471 8000 | www.mhcreal.com

FOR LEASE: YAMATO OFFICE CENTER

From Concept to Creation – Customize Your Perfect Space

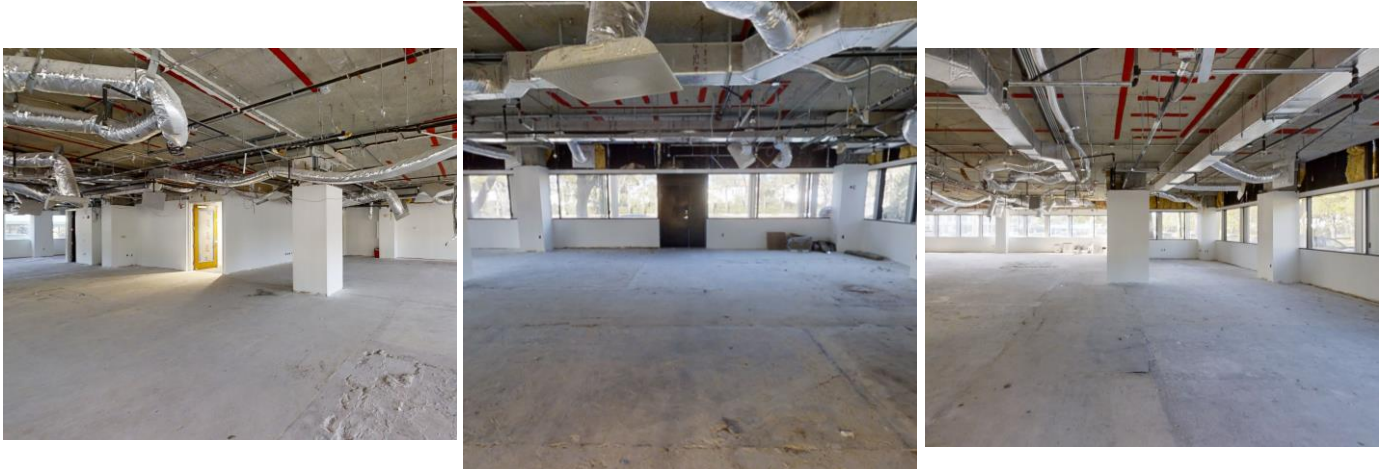
999-1001 YAMATO ROAD, BOCA RATON, FL 33431



CLICK HERE
FOR 3D TOUR!

1001 - Suite 101 ±5,227 SF

- Spacious ground floor suite with panoramic window lines
- Double-door entrance off main lobby hallway
- Raw space available for your dream customization



For More Information:

Richard W. Brockney or Neil E. Merin, SIOR, CCIM | 561 471 8000 | www.mhcreal.com