

Aerial Overview



Property Description

PROPERTY DESCRIPTION

The opportunity is to purchase 30.7± acres in an Opportunity Zone within unincorporated Pasco County. The site is situated conveniently along the six-lane major thoroughfare of US 19, boasting 890 feet of frontage to traffic counts of 39,500 AADT.

The site is currently zoned C-2, which allows for a variety of general commercial uses. Any residential uses would require a Master Planned Unit Development (MPUD) rezoning. The property is located within the Future Land Use designation of ROR (Retail/Office/Residential), where commercial, residential, and hospitality uses are permitted as long as the use does not exceed 75% of the developable acreage. The ROR designation allows up to 24 units per acre.

This site may qualify for multifamily/apartments under the Live Local Act, but Pasco County has been opposed to Live Local. Please call broker for details.

LOCATION DESCRIPTION

The property is located at the northwest corner of US 19 & Sea Pines Drive in Hudson, FL. The property is situated between two major east/west thoroughfares of County Line (5 miles to the north) and State Road 52 (4.5 miles to the south) allowing easy accessibility.

PROPERTY SIZE

30.7 Acres

ZONING

C-2

FUTURE LAND USE

ROR (Residential/Office/Retail)

PRICE

\$4,300,000

BROKER CONTACT INFO

Bill Eshenbaugh, ALC,CCIM
President, Lic. Real Estate Broker
813.287.8787 x1
Bill@TheDirtDog.com

Pat Shelton
Broker Associate
813.287.8787 x14
pat@thedirtdog.com

Overview Facing South

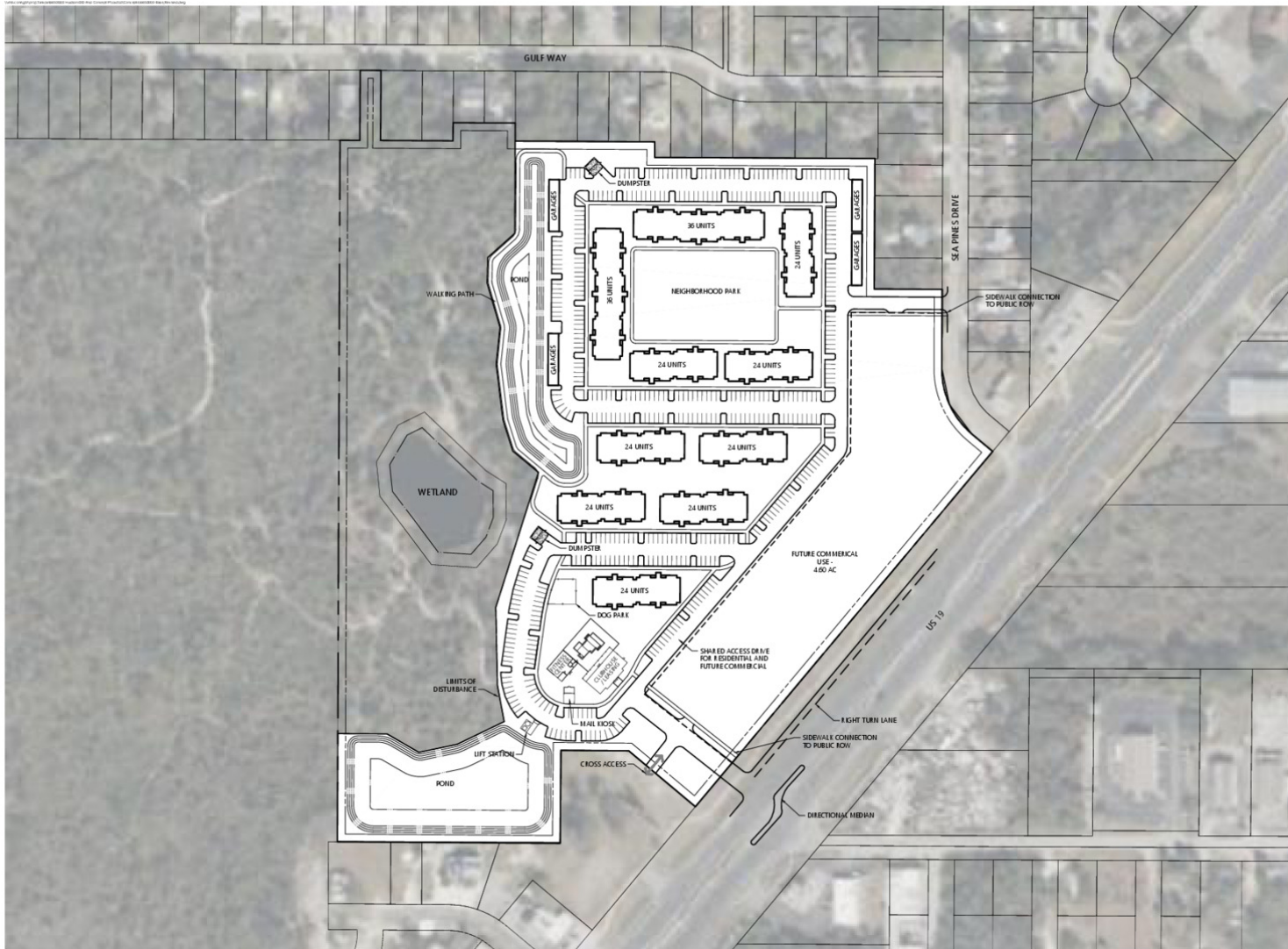


30.7± Acres

Overview Facing North



Site Plan



Site Data Table

SITE LOCATION:	561 CORNER US 19 AND SEA PINES DRIVE HUDSON, FLORIDA
PROPERTY AREA:	30.42 ACRES
APPROXIMATE PROJECT AREA:	22.00 ACRES
MASTER STORMWATER AREA:	3.80 ACRES
COMMERCIAL OUTPARCEL AREA:	4.60 ACRES
EXISTING USE:	VACANT
PROPOSED USE:	MULTI-FAMILY APARTMENTS & COMMERCIAL
PROPOSED UNITS:	264 UNITS (2 BEDROOM)
REQUIRED PARKING:	
APARTMENTS:	528 SPACES (2 SPACES/UNIT)
VISITORS:	60 SPACES (0.25 SPACES/UNIT)
TOTAL:	588 SPACES
15% ALLOWABLE REDUCTION IN PARKING FOR TRANSIT STOP:	
TOTAL REQUIRED PARKING:	505 SPACES
PROPOSED PARKING:	505 SPACES

Demographics Map & Report

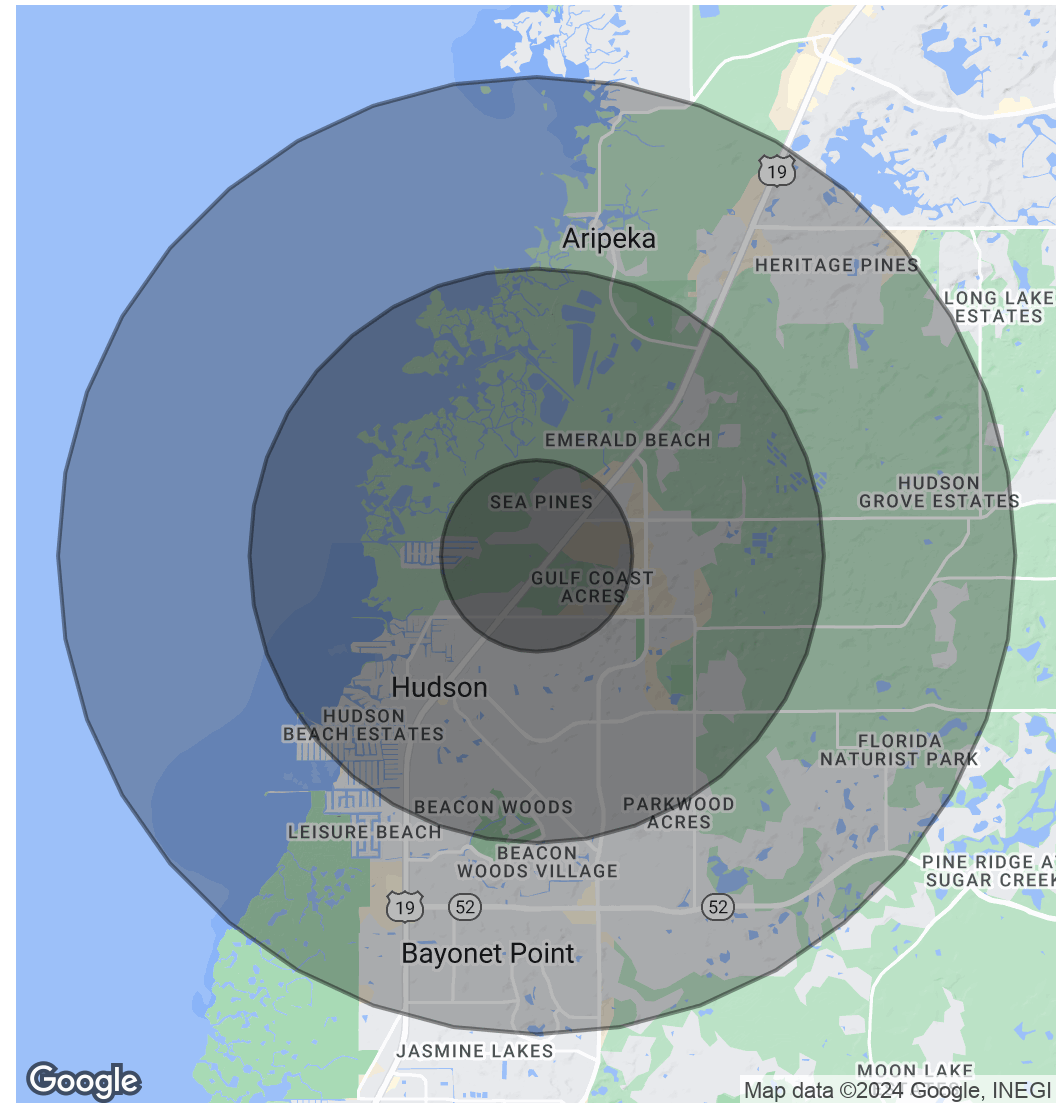
POPULATION

	1 MILE	3 MILES	5 MILES
Total Population	1,805	21,237	57,553
Average Age	48.2	54.4	51.4
Average Age (Male)	51.1	53.6	50.3
Average Age (Female)	44.1	54.8	52.4

HOUSEHOLDS & INCOME

	1 MILE	3 MILES	5 MILES
Total Households	1,101	12,484	32,532
# of Persons per HH	1.6	1.7	1.8
Average HH Income	\$43,541	\$46,610	\$42,406
Average House Value	\$103,611	\$153,205	\$127,638

2020 American Community Survey (ACS)



Regional Map



Location Map



IO US 19 & SEA PINES // 15553 U.S. HIGHWAY 19 HUDSON, FL 34667

Confidentiality & Disclaimer

All materials and information received or derived from Eshenbaugh Land Company, LLC its directors, officers, agents, advisors, affiliates and/or any third party sources are provided without representation or warranty as to completeness, veracity, or accuracy, condition of the property, compliance or lack of compliance with applicable governmental requirements, developability or suitability, financial performance of the property, projected financial performance of the property for any party's intended use or any and all other matters.

Neither Eshenbaugh Land Company, LLC its directors, officers, agents, advisors, or affiliates makes any representation or warranty, express or implied, as to accuracy or completeness of the any materials or information provided, derived, or received. Materials and information from any source, whether written or verbal, that may be furnished for review are not a substitute for a party's active conduct of its own due diligence to determine these and other matters of significance to such party. Eshenbaugh Land Company, LLC will not investigate or verify any such matters or conduct due diligence for a party unless otherwise agreed in writing. EACH PARTY SHALL CONDUCT ITS OWN INDEPENDENT INVESTIGATION AND DUE DILIGENCE.

Any party contemplating or under contract or in escrow for a transaction is urged to verify all information and to conduct their own inspections and investigations including through appropriate third party independent professionals selected by such party. All financial data should be verified by the party including by obtaining and reading applicable documents and reports and consulting appropriate independent professionals. Eshenbaugh Land Company, LLC makes no warranties and/or representations

regarding the veracity, completeness, or relevance of any financial data or assumptions. Eshenbaugh Land Company, LLC does not serve as a financial advisor to any party regarding any proposed transaction. All data and assumptions regarding financial performance, including that used for financial modeling purposes, may differ from actual data or performance. Any estimates of market rents and/or projected rents that may be provided to a party do not necessarily mean that rents can be established at or increased to that level. Parties must evaluate any applicable contractual and governmental limitations as well as market conditions, vacancy factors and other issues in order to determine rents from or for the property.

Legal questions should be discussed by the party with an attorney. Tax questions should be discussed by the party with a certified public accountant or tax attorney. Title questions should be discussed by the party with a title officer or attorney. Questions regarding the condition of the property and whether the property complies with applicable governmental requirements should be discussed by the party with appropriate engineers, architects, contractors, other consultants and governmental agencies. All properties and services are marketed by Eshenbaugh Land Company, LLC in compliance with all applicable fair housing and equal opportunity laws.

Eshenbaugh Land Company is a licensed real estate brokerage firm in Florida and William A. Eshenbaugh is the broker of record.