

Lowest Priced Federal Highway Medical Office Suite for Lease

For Lease
\$16.00/Sq. Ft Gross
660 S Federal Hwy.
Pompano Beach, FL 33062



FOR LEASE	1st Floor Suite 103 Approximately 1,171 Sq. Ft.
DESCRIPTION	Lowest priced first floor office space on Federal Hwy!! Interior recently remodeled for general office. Prominent features include 4 offices, private bathrooms and ample parking.
PROPERTY VIDEO	https://www.youtube.com/embed/6uv3dZ6py5Q?rel=0
LOCATION	Located on the east side of South Federal Hwy.
PARKING/ YEAR BUILT	Built in 1971/ 32 Spaces
PRICING	\$16.00 per Sq. Ft. Gross Tenant pays Electric.
TRAFFIC COUNT	45,500 Cars per day
ZONING & FOLIO NUMBERS	Zoning: B-3 Folio Number: 494306100040

Disclaimer: This offering subject to errors, omissions, prior sale or withdrawal without notice.

CAMPBELL & ROSEMURGY
COMMERCIAL REAL ESTATE

FOR MORE INFORMATION:

John D. McQuestion

john@johnmcquestion.com • 561-706-7721 (cell)

www.johnmcquestion.com

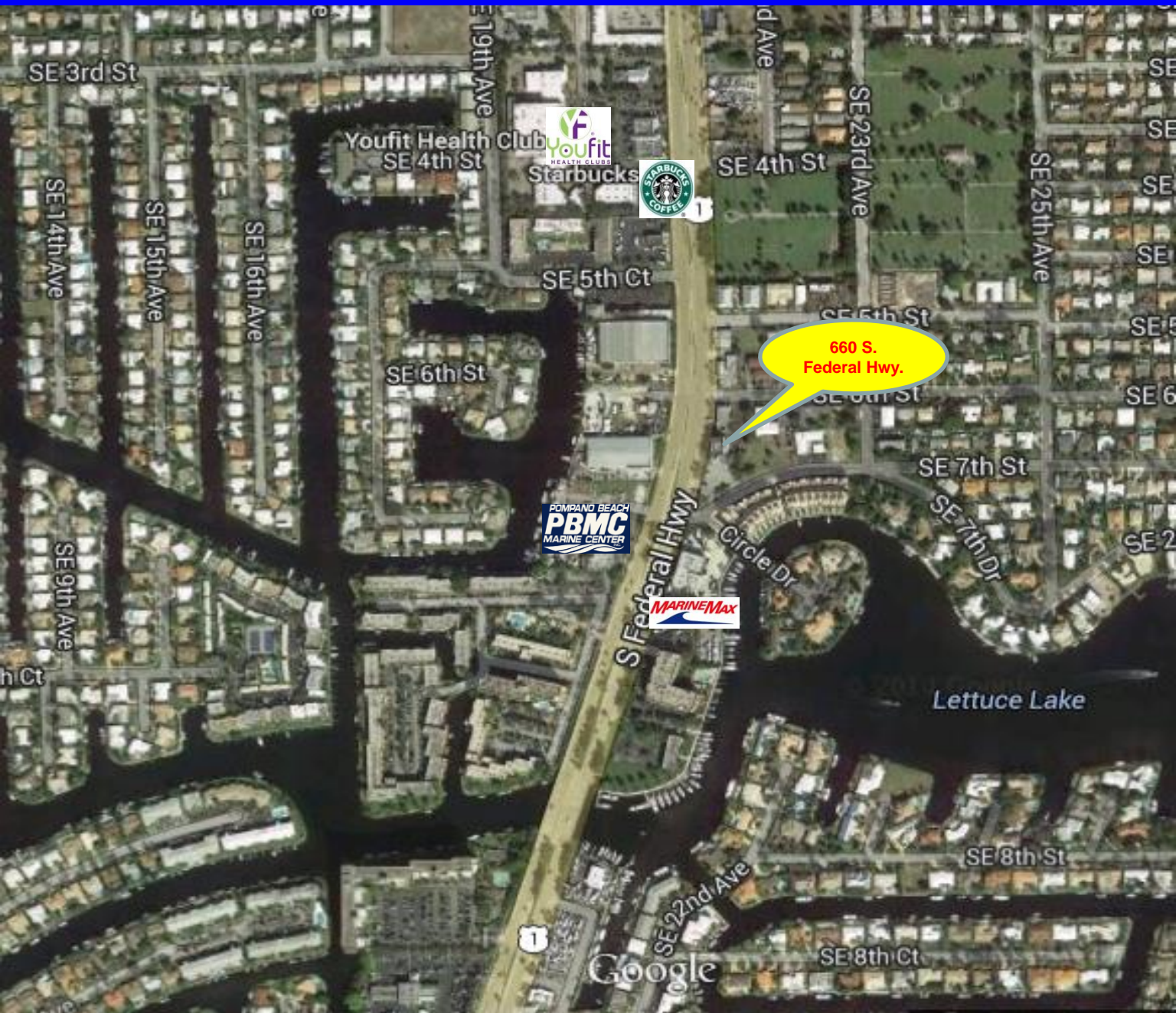
1233 E. Hillsboro Blvd
Deerfield Beach, FL 33441

954.427.8686 T.
954.427.0117 F.

Location Map

For Lease
\$16.00/ Sq Ft Gross

660 S. Federal Hwy.
Pompano Beach, FL 33062



Disclaimer: This offering subject to errors, omissions, prior sale or withdrawal without notice.

CAMPBELL & ROSEMURGY
COMMERCIAL REAL ESTATE

FOR MORE INFORMATION:

John D. McQuestion

john@johnmcquestion.com • 561-706-7721 (cell)

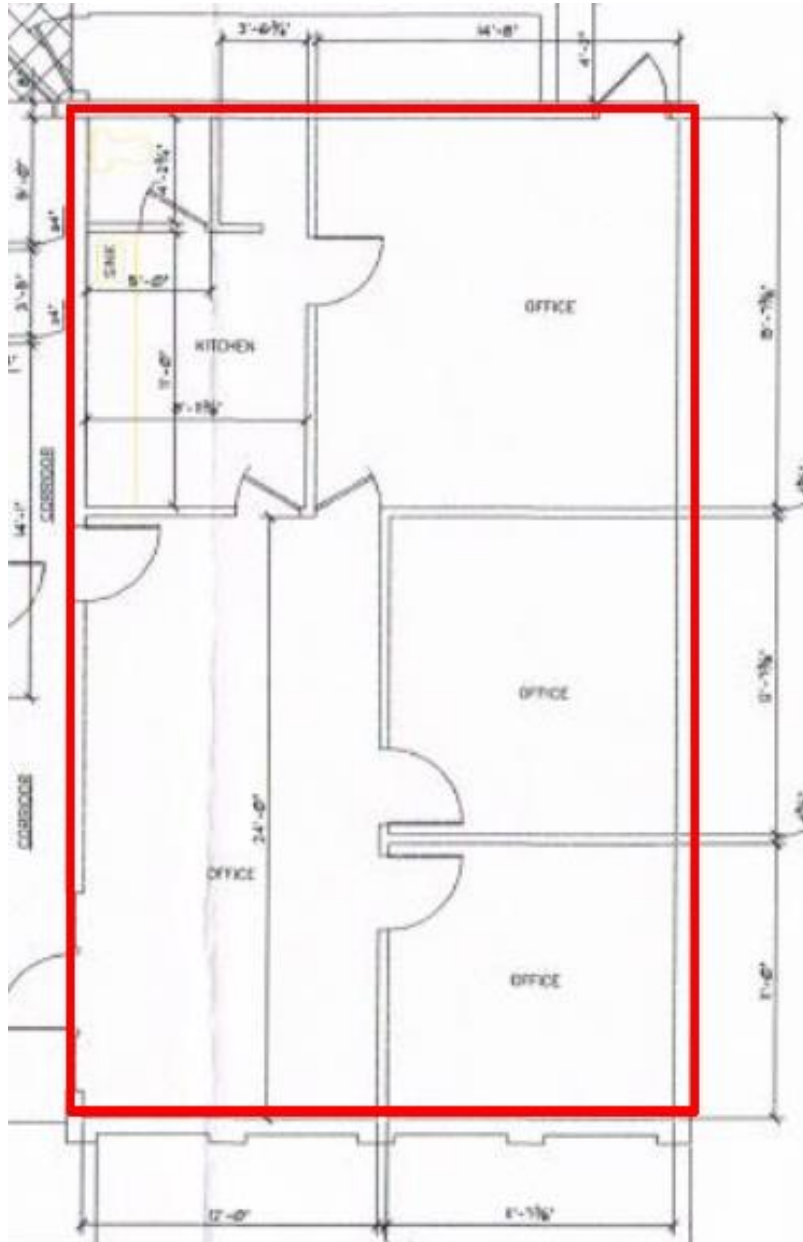
www.johnmcquestion.com

1233 E. Hillsboro Blvd
Deerfield Beach, FL 33441

954.427.8686 T.
954.427.0117 F.

Suite 100 Floor Plan

For Lease
\$16.00/ Sq Ft Gross
660 S. Federal Hwy.
Pompano Beach, FL 33062



Suite 103
1,171 Sq. Ft

Disclaimer: This offering subject to errors, omissions, prior sale or withdrawal without notice.

CAMPBELL & ROSEMURGY
COMMERCIAL REAL ESTATE

FOR MORE INFORMATION:

John D. McQuestion

john@johnmcquestion.com • 561-706-7721 (cell)

www.johnmcquestion.com

1233 E. Hillsboro Blvd
Deerfield Beach, FL 33441

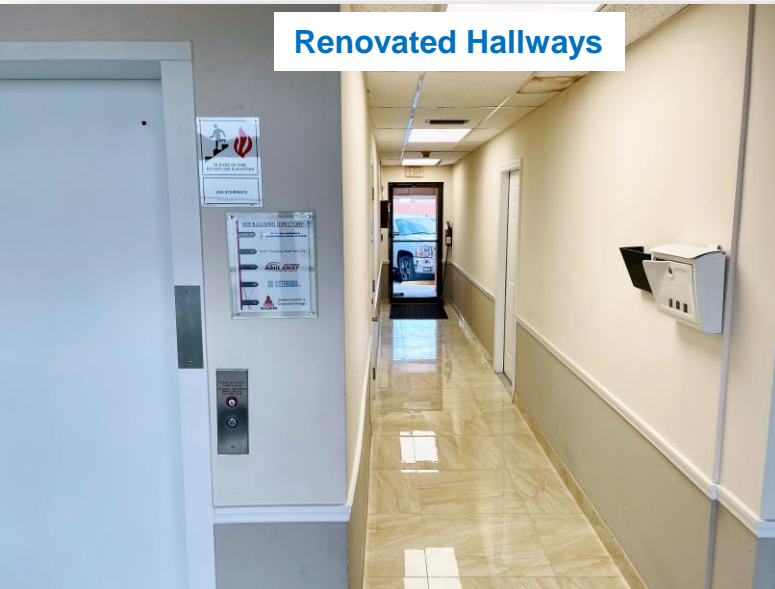
954.427.8686 T.
954.427.0117 F.

Additional Photos

For Lease
\$16.00/ Sq Ft Gross

660 S. Federal Hwy.
Pompano Beach, FL 33062

Renovated Hallways



Entrance/ Reception



Kitchen Area



Office



Disclaimer: This offering subject to errors, omissions, prior sale or withdrawal without notice.

CAMPBELL & ROSEMURGY
COMMERCIAL REAL ESTATE

FOR MORE INFORMATION:

John D. McQuestion

john@johnmcquestion.com • 561-706-7721 (cell)

www.johnmcquestion.com

1233 E. Hillsboro Blvd
Deerfield Beach, FL 33441

954.427.8686 T.
954.427.0117 F.