

READY MEDICAL OFFICE FOR LEASE

Village At Hunters Creek

4377 Hunters Park Lane #GE, Orlando, FL, 32837



In cooperation with



AVAILABLE SPACES

Suite	Size	Rate	Type
GE	2,600	\$27.69 /sf/mo	NNN

OFFERING SUMMARY

SPACE AVAILABLE:	2,600 SF
LEASE RATE:	\$27.69 SF
LEASE TERM:	3 to 5 years
LEASE TYPE:	NNN
CENTRAL FLORIDA GREENEWAY AADT:	72,000
HUNTERS PARK LN AADT:	4,357
ZONING:	P-D
LOT SIZE:	0.06
YEAR BUILT:	2018

PROPERTY OVERVIEW

- Almost As New Office Well-Equipped and Conveniently Located Office Space in The Hunter's Creek Area, Suitable for Medical Usage. The Office Boasts a Spacious Layout with Several Key Areas, 4 wet exam rooms and kitchenette.
- Office Is Designed to Accommodate the Needs of a Medical Practice Efficiently. Its Location in Hunter's Creek.
- Situated In the Village at Hunter's Creek, With Easy Access from Major Roads Such As 417, 423, 441, And 528.
- Proximity to The Loop Adds to Its Convenience.
- 5- Mile Population: 183,240.
- 5- Mile HHI: \$45,122.



The calculations and data presented are deemed to be accurate, but not guaranteed. They are intended for the purpose of illustrative projections and analysis. The information provided is not intended to replace or serve as substitute for any legal, accounting, investment, real estate, tax or other professional advice, consultation or service.

CONTACT US

FRANCISCO JARAMILLO, CCIM

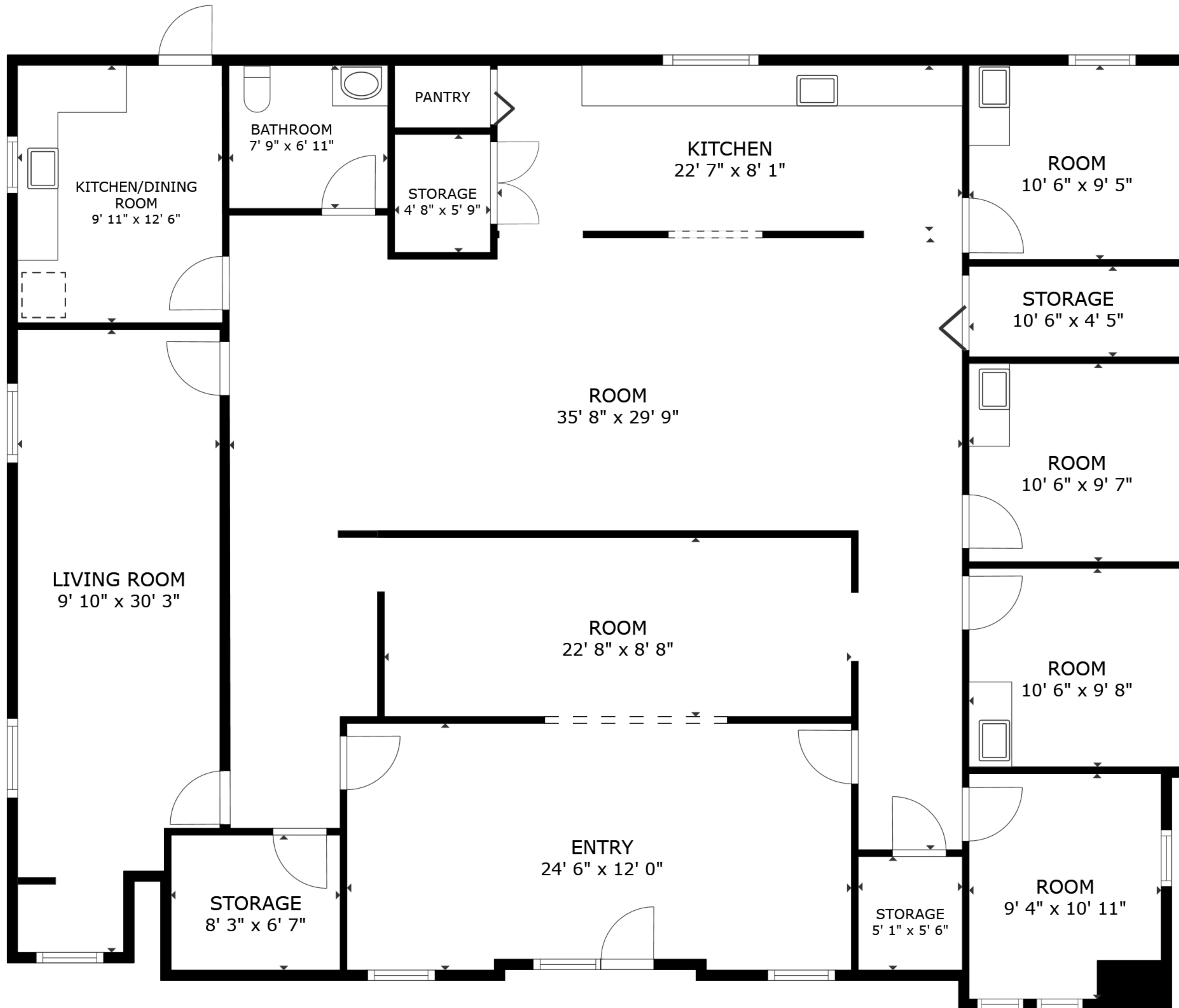
Principal, Managing Broker

(407) 683-4444

Francisco@407cre.com

BK 3252370, FL





FLOOR PLAN

GROSS INTERNAL AREA
 FLOOR PLAN 2,473 sq.ft.
 TOTAL : 2,473 sq.ft.

SIZES AND DIMENSIONS ARE APPROXIMATE, ACTUAL MAY VARY.